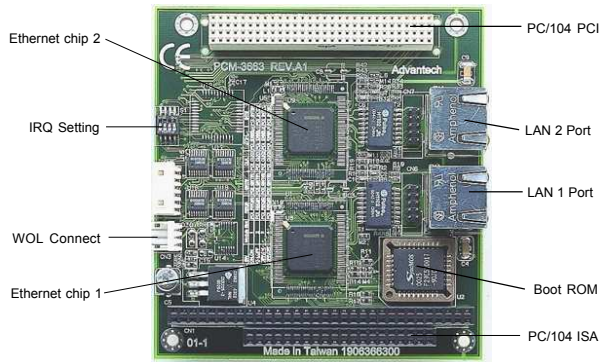


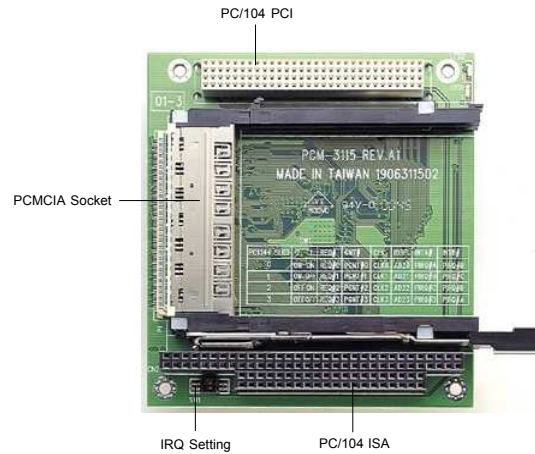
PCM-3663

PC/104-Plus Dual Ethernet Module



PCM-3115

PC/104-Plus PCMCIA Module



Introduction

Designed to support the ever increasing number of network connected embedded products on the market, the PCM-3663 can be applied to any size form factor CPU board employing the PC/104-plus throughput connectors. The PCM-3663 can provide a single or dual ethernet configuration using combinations of Intel's 82559ER or Realtek's RTL8139 ethernet chipsets (see ordering information below), and even offers the Intel 82559 chipset as an option. The PCM-3663 provides full 32-bit performance, PCI bus capability and is in full compliance with IEEE 802.3u 100Base-T specifications and IEEE 802.3x Full Duplex Flow Control. The PCM-3663 is your off-the-shelf solution that can immediately provide one or two ethernet ports to your embedded system.

The PCM-3663 module includes a built-in 10 pin box header and RJ-45 connectors. Two diagnostic LEDs indicate the operating status of the module and the network. You can define LEDs according to the application. The PCM-3663 comes with drivers for a wide variety of networks and operating systems. An optional boot ROM lets you boot a remote station automatically from a server, making hard or floppy disks unnecessary. The PCM-3663 also provides Wake-ON-LAN functionality.

Ordering Information

PCM-3663-00A1 : PC/104 Plus Dual Ethernet Module (RTC 8139)(optional)

PCM-3663-01A1 : PC/104 Plus Single Ethernet Module (RTC 8139)

PCM-3663-02A1 : PC/104 Plus Dual Ethernet Module (Intel-82559 ER)

PCM-3663-03A1 : PC/104 Plus Single Ethernet Module (Intel-82559 ER)(optional)

Note: PCM-3663-02A1 and PCM-3663-03A1 are without Wake-ON-LAN function.

Specifications

- Chipset: Intel 82559 ER (optional Intel 82559) or Realtek 8139, both PCI 10/100 Base-T
- Port: Single or twin Ethernet port
- Network port: 10 Mbps IEEE 802.3, 100 Mbps IEEE 802.3u, RJ-45 connector
- Compatibility: PCI version 2.2, 10/100 Mbps CSMA/CD 10/100 Mbps transceiver
- Dimensions: (L x W): 96 mm x 90 mm (3.8" x 3.5")
- Weight: 84 g (.185 lb)
- Operating temperature: 0° ~ 60° C (32 ~ 140° F)
- Storage temperature: -40° ~ 85° C (-40 ~ 185° F)
- Operating humidity: 0% to 90% relative humidity, noncondensing
- Power supply voltage: + 5 V ± 5 %

Introduction

The PCM-3115, with its Ricoh Card Bus Controller chipset, brings the latest PCMCIA performance features to Advantech's PC/104 line. This includes low power consumption (hardware suspend) and Microsoft native driver support. The Ricoh chipset, with a substantial list of pretested supported devices, allows for greater all-around compatibility for your PCMCIA device support. The PC/104-Plus form factor gives a high speed PCI interface to support the fastest PCMCIA applications/devices, such as Lan, Wireless, IDSN cards and memory cards. And most of all, the rugged construction allows this type of performance to be placed in the most demanding conditions.

The National Software Testing Laboratories (NSTL) has certified the Ricoh chipset for all the major operating systems. Microsoft has also certified this chipset for most of their major operating systems as well. So rest assured, this module is ready to operate flawlessly with any embedded system.

Ordering Information

PCM-3115-00A1 : PC/104 Plus card bus PCMCIA module

Specifications

- Chipset: Ricoh Card Bus Controller
- 16-bit Legacy mode support: YES (3 E0/3E2 I/O port)
- PCI way Legacy DMA support: YES
- Data bus: 32 bit (compliant with PCI Bus specification 2.2)
- PCI interface: 3.3 V interface (5 V tolerant)
- H/W configuration: Plug & Play auto detect & configuration
- Software: Windows 98/NT/2000/ME, native driver fully supported
- Power requirements: +5 V @ 70 mA (typical)
- Size/weight: 96 mm x 90 mm (3.8" x 3.5")
- Environment: 0 ~ 60° C (operating) - 40 ~ 85° C (storage)
- Humidity: 0 ~ 90 % RH non-condensing (operating)

ADVANTECH

Embedded Computing