

### Funk-Entstörfilter

im rechteckigen Metallgehäuse

### Radio-Interference Suppression Filters

encapsulation: rectangular metal case

### Filtres d'antiparasitage

boîtier métallique rectangulaire



Bild I

Fig. I

ill. I

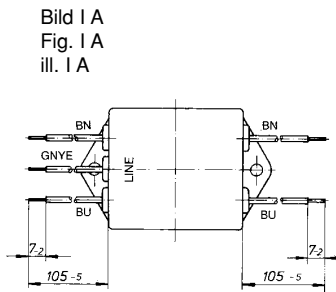
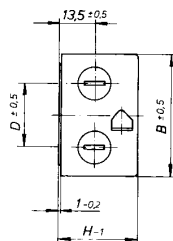
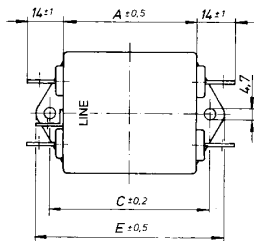


Bild I A

Fig. I A

ill. I A

Bild II

Fig. II

ill. II

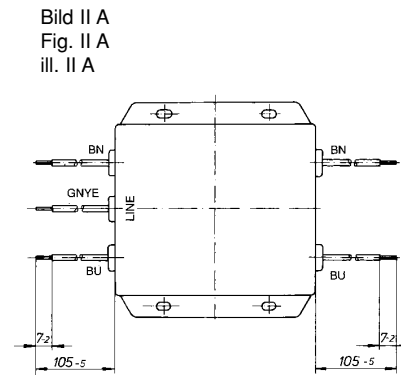
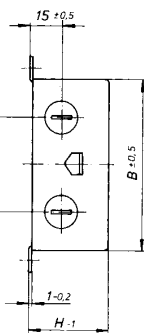
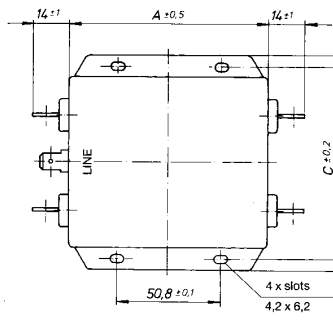


Bild II A

Fig. II A

ill. II A



Nennstrom Rated current Courant nominal	Nennkapazität Rated capacitance Capacité nominale	Nenninduktivität Rated inductance Inductance nominale		Abmessungen Dimensions						Bild Fig. ill.	Teile-Nr. Part number Référence
				A	B	C	D	E	H		
4 A	0,22 µF X2	2 x 1,2 mH	2 x 100 µH	63,5	51	74,7	33	84,7	30	I	F033-204/500
6 A				63,5	51	74,7	33	84,7	40	I	F033-206/500
10 A	+ 2 x 4700 pFY2 + 0,22 µF X2	2 x 1,2 mH	2 x 25 µH	99,2	84,4	95	40	105	40	II	F033-210/500
16 A				99,2	84,4	95	40	105	45,5	II	F033-216/500
4 A	0,22 µF X2	2 x 1,2 mH	2 x 100 µH	63,5	51	74,7	33	84,7	30	I. A	F033-204/520
6 A				63,5	51	74,7	33	84,7	40	I. A	F033-206/520
10 A	+ 2 x 4700 pFY2 + 0,22 µF X2	2 x 1,2 mH	2 x 25 µH	99,2	84,4	95	40	105	40	II.A	F033-210/520
16 A				99,2	84,4	95	40	105	45,5	II.A	F033-216/520

Nennspannung: AC 110/250 V 50/60 Hz  
 Kapazitätsabweichung: ± 20%  
 Kondensatorenklasse: X2Y2  
 Induktivitätsabweichung: -30% / +50%  
 Entladewiderstand: 680 K  
 Ausführung: Metallgehäuse (Al) mit Lasche  
 Klimakategorie: 25/100/21-C nach IEC 60068-1

Anschlüsse: Bild I,II: Flachstecker 6,3 x 0,8 mm  
 Bild IA, IIA: Cu-Litze Typ AWG  
 1 A, 2 A AWG 20  
 4 A, 6 A AWG 18  
 10 A, 16 A AWG 14  
 Anschlussenden abisoliert

Rated voltage: AC 110/250 V 50/60 Hz  
 Capacitance tolerance:  $\pm 20\%$   
 Capacitor class: X2, Y2  
 Inductance tolerance:  $-30\% / +50\%$   
 Discharge resistor: 680 K  
 Encapsulation: metal case (AL) with fixing lug  
 Climatic category: 25/100/21-C to IEC 60068-1  
 Connections: Fig. I, II: Fastons 6.3 x 6.8 mm  
 Fig. IA, IIA: copper wire type AWG  
                   1 A, 2 A    AWG 20  
                   4 A, 6 A    AWG 18  
                   10 A, 16 A    AWG 14  
                           ends stripped

Tension nominale: c. a. 110/250 V 50/60 Hz  
 Tolérances des capacités:  $\pm 20\%$   
 Classes des condensateurs: X2, Y2  
 Tolérances des inductances:  $-30\% / +50\%$   
 Résistance de décharge: 680 K  
 Boîtier: boîtier métallique (AL) avec étrier  
 Catégorie climatique: 25/100/21-C selon IEC 60068-1  
 Connexions: ill. I, II: cosses plates 6,3 x 0,8 mm  
                   ill. IA, IIA: fil cuivre type AWG  
                           1 A, 2 A    AWG 20  
                           4 A, 6 A    AWG 18  
                           10 A, 16 A    AWG 14  
                                   fins dénudées

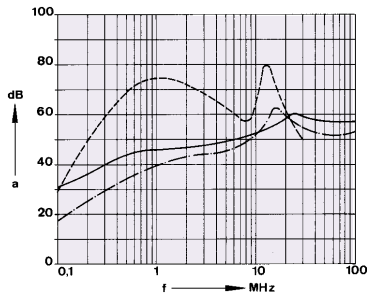
Prüfzeichen:

Approvals:

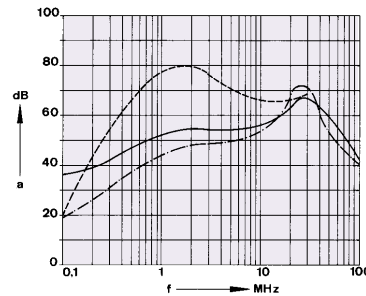
 EN 133200
 

 max. 85°C

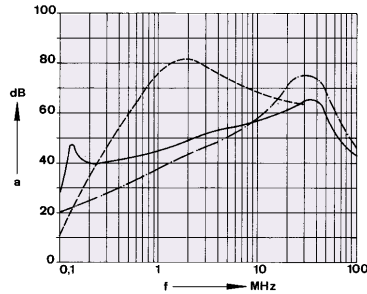
Homologations:



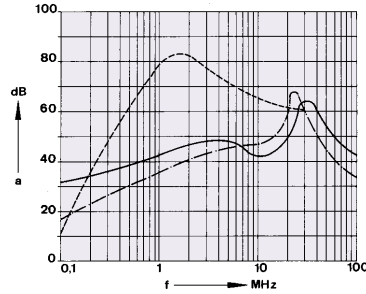
F033-204/5 .0



F033-206/5 .0



F033-210/5 .0



F033-216/5 .0

Einfügungsdämpfung (Richtwerte), Messung im 50 $\Omega$ -System  
 Insertion loss (approx. values), measured in 50 $\Omega$ -system  
 Affaiblissement d'insertion (valeurs indicatives), Mesurage dans le circuit 50 $\Omega$

| unsymmetrische Messung, Abschluss des Nachbarzweiges  
 | Non-symmetric measurement  
 | Mesurage non-symétrique

| asymmetrische Messung, beide Zweige parallel (common mode)  
 | Asymmetric measurement (common mode)  
 | Mesurage asymétrique (common mode)

| symmetrische Messung (differential mode)  
 | Symmetric measurement (differential mode)  
 | Mesurage symétrique (differential mode)