

### Funk-Entstörfilter

im rechteckigen Metallgehäuse

### Radio-Interference Suppression Filter

encapsulation: rectangular metal case

### Filtres d'antiparasitage

boîtier métallique rectangulaire

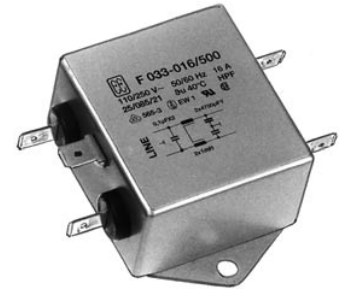


Bild I  
Fig. I  
ill. I

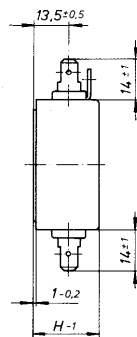
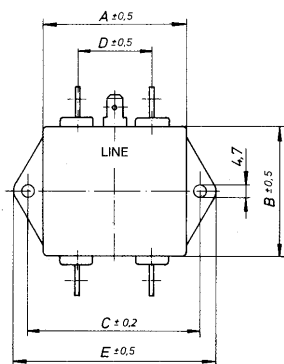
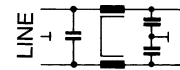
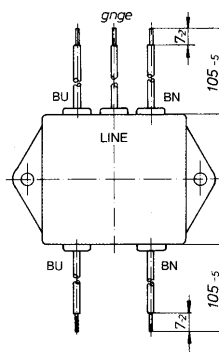


Bild I A  
Fig. I A  
ill. I A



Nennstrom Rated current Courant nominale	Nennkapazität Rated capacitance Capacité nominale	Nenninduktivität Rated inductance Inductance nominale	Abmessungen Dimensions						Bild Fig. ill.	Teile-Nr. Part number Référence
			A	B	C	D	E	H		
1 A	0,1 µF X2 + 2 x 4700 pF Y2	2 x 1 mH	41,2	28,2	54	27	64	24	I	F033-001/500
2 A		2 x 1 mH	41,2	28,2	54	27	64	24	I	F033-002/500
4 A		2 x 1 mH	41,2	28,2	54	27	64	24	I	F033-004/500
6 A		2 x 0,75 mH	41,2	28,2	54	27	64	30	I	F033-006/500
10 A		2 x 0,75 mH	41,2	28,2	54	27	64	30	I	F033-010/500
16 A		2 x 1 mH	45	50	60,4	27	70,4	30	I	F033-016/500
1 A	0,1 µF X2 + 2 x 4700 pF Y2	2 x 1 mH	41,2	28,2	54	27	64	24	I.A	F033-001/520
2 A		2 x 1 mH	41,2	28,2	54	27	64	24	I.A	F033-002/520
4 A		2 x 1 mH	41,2	28,2	54	27	64	24	I.A	F033-004/520
6 A		2 x 0,75 mH	41,2	28,2	54	27	64	30	I.A	F033-006/520
10 A		2 x 0,75 mH	41,2	28,2	54	27	64	30	I.A	F033-010/520
16 A		2 x 1 mH	45	50	60,4	27	70,4	30	I.A	F033-016/520

Nennspannung: AC 110/250 V 50/60 Hz  
 Kapazitätsabweichung: ± 20%  
 Kondensatorenklasse: X2, Y2  
 Induktivitätsabweichung: -30% / +50%  
 Ausführung: Metallgehäuse (Al) mit Lasche  
 Klimakategorie: 25/100/21-C nach IEC 60068-1

Anschlüsse: Bild I: Flachstecker 6,3 x 0,8  
 Bild I.A: Cu-Litze AWG  
 1 A, 2 A AWG 20  
 4 A, 6 A AWG 18  
 10 A, 16 A AWG 14  
 Anschlussenden abisoliert

Rated voltage: AC 110/250 V 50/60 Hz  
 Capacitance tolerance:  $\pm 20\%$   
 Capacitor class: X2Y2  
 Inductance tolerance:  $-30\% / +50\%$   
 Encapsulation: metal case (AL) with fixing lug  
 Climatic category: 25/100/21-C to IEC 60068-1  
 Connections: Fig. I: Fastons 6.3 x 6.8 mm  
 Fig. IA: copper wire type AWG  
           1 A, 2 A    AWG 20  
           4 A, 6 A    AWG 18  
           10 A, 16 A AWG 14  
           ends stripped

Tension nominale: c. a. 110/250 V 50/60 Hz  
 Tolérances des capacités:  $\pm 20\%$   
 Classes des condensateurs: X2Y2  
 Tolérances des inductances:  $-30\% / + 50\%$   
 Boîtier: boîtier métallique (AL) avec étrier  
 Catégorie climatique: 25/100/21-C selon IEC 60068-1  
 Connexions: ill. I: cosse plates 6,3 x 0,8 mm  
               ill. IA.: fil cuivre type AWG  
               1 A, 2 A    AWG 20  
               4 A, 6 A    AWG 18  
               10 A, 16 A AWG 14  
               fins dénudées

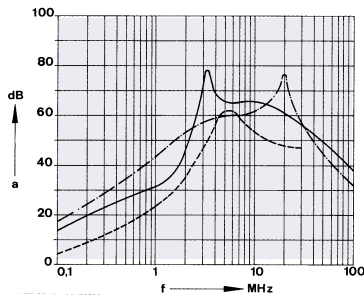
Prüfzeichen:

Approvals:

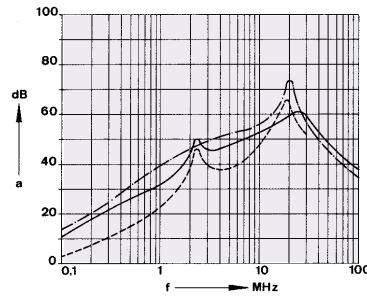
Homologations:

 EN 133200 
 

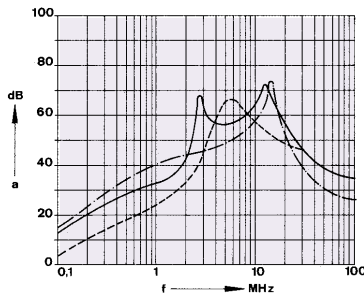
 max. 85°C



F033-001/5 .0, F033-002/5 .0,  
F033-004/5 .0



F033-006/5 .0, F033-010/5 .0



F033-016/5 .0

Einfügungsdämpfung (Richtwerte), Messung im 50 $\Omega$ -System  
 Insertion loss (approx. values), measured in 50 $\Omega$ -system  
 Affaiblissement d'insertion (valeurs indicatives), Mesurage dans le circuit 50 $\Omega$

| unsymmetrische Messung, Abschluss des Nachbarzweiges  
 | Non-symmetric measurement  
 | Mesurage non-symétrique

| asymmetrische Messung, beide Zweige parallel (common mode)  
 | Asymmetric measurement (common mode)  
 | Mesurage asymétrique (common mode)

| symmetrische Messung (differential mode)  
 | symmetric measurement (differential mode)  
 | Mesurage symétrique (differential mode)