

**LB1913****FDD Spindle Motor Driver****Overview**

The LB1913 is a three-phase disk drive motor driver IC that is optimal for use as a 3.5-inch floppy disk drive spindle motor driver.

Functions and Features

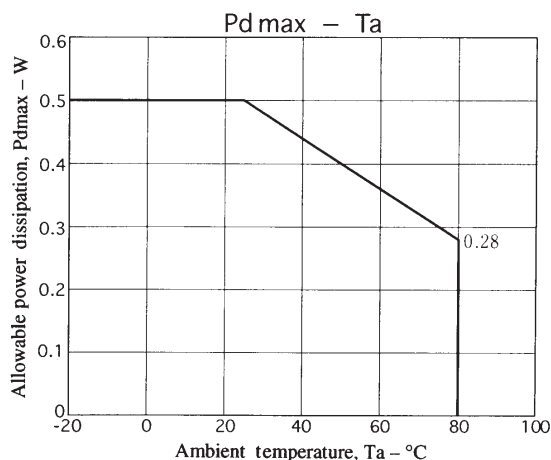
- Three-phase full-wave linear drive
- On-chip digital speed control
- Start and stop circuits (active low)
- Speed switching
High: 300 rpm, Low: 360 rpm
- Current limiter circuit
- Index comparator circuit
- Index delay circuit
- Thermal protection circuit

Specifications**Absolute Maximum Ratings at Ta = 25°C**

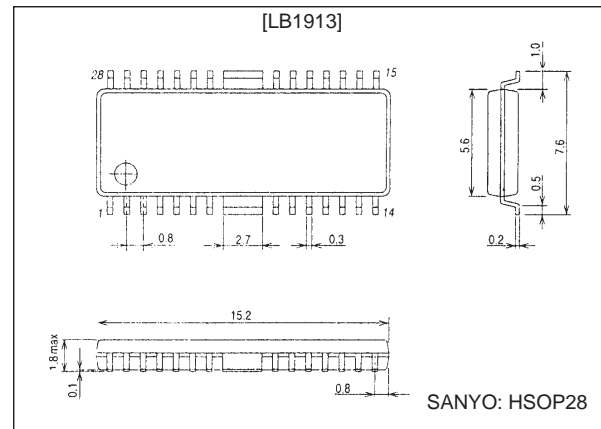
Parameter	Symbol	Conditions	Ratings	Unit
Maximum supply voltage	$V_{CC\ max}$		7.0	V
Maximum output current	$I_O\ max1$	$t \leq 0.5\ s$	1.0	A
Maximum steady-state output current	$I_O\ max2$		0.7	A
Allowable power dissipation	$P_d\ max$	Independent IC	0.5	W
Operating temperature	T_{opr}		-20 to +80	°C
Storage temperature	T_{stg}		-40 to +150	°C

Allowable Operating Ranges at Ta = 25°C

Parameter	Symbol	Conditions	Ratings	Unit
Recommended supply voltage	V_{CC}		4.2 to 6.5	V

**Package Dimensions**

unit: mm

3222-HSOP28

SANYO Electric Co., Ltd. Semiconductor Business Headquarters

TOKYO OFFICE Tokyo Bldg., 1-10, 1 Chome, Ueno, Taito-ku, TOKYO, 110 JAPAN

83196HA (0T) No. 5503-1/6

LB1913

Electrical Characteristics at $T_a = 25^\circ\text{C}$, $V_{CC} = 5.0\text{ V}$

Parameter	Symbol	Conditions	Ratings			Unit
			min	typ	max	
Current drain	I_{CCO}	S/S = 5 V (standby mode)			10	μA
	I_{CC}	S/S = 0 V (normal mode)		12	18	mA
SL bias current	I_{SL}	$V_{SL} = 0\text{ V}$			10	μA
SL input low-level voltage	V_{SLL}		0		1.0	V
SL input high-level voltage	V_{SLH}		3.5		V_{CC}	V
S/S bias current	$I_{S/S}$			180	270	μA
S/S low-level voltage	$V_{S/SL}$		0		0.8	V
S/S high-level voltage	$V_{S/SH}$		3.5		V_{CC}	V
Hall amplifier input bias current	I_{HB}				10	μA
Common-mode input voltage range	V_h		1.5		$V_{CC}-1.0$	V
Differential-mode input voltage range	V_{dif}		50		200	mVp-p
Hall bias output voltage	V_H	$I_H = 5\text{ mA}$		0.8		V
Leakage current	I_{HL}	S/S = 5 V			± 10	μA
Output saturation voltage	V_{sat}	$I_O = 0.7\text{ A}$, sink + source		1.3	1.8	V
Output leakage current	I_{OL}				1.0	mA
Current limiter	V_{lim}		0.27	0.3	0.33	V
Control amplifier voltage gain	G_C			-7		dB
Interphase voltage gain difference	ΔG_C				± 1	dB
V/I converter source current	I^+		9	14	19	μA
V/I converter sink current	I^-		-9	-14	-19	μA
V/I converter current ratio	I^+/I^-		0.8	1.0	1.2	
DSC buffer input current	I_{DSC}				1.0	μA
FG Schmitt hysteresis	ΔV_{sh}	*		50		mV
Number of speed discriminator counts	N			1041.5		
Discriminator operating frequency	F_D	*			1.1	MHz
Oscillator frequency range	F_{OSC}	*			1.1	MHz
Index output low-level voltage	V_{IDL}	$I_O = 2\text{ mA}$			0.4	V
Index output leakage current	I_{IDL}				± 10	μA
FG amplifier voltage gain	G_{FG}	*		48		dB
FG amplifier input offset	V_{FGO}				± 10	mV
FG amplifier internal reference voltage	V_{FGB}		2.2	2.5	2.8	V
Schmitt hysteresis	ΔV_{SH}	*		50		mV
Index input hysteresis	ΔV_{ID}	*		20		mV
Index common-mode input voltage range	V_{ID}		1.0		$V_{CC}-1.0$	V
Thermal shutdown circuit operating temperature	TSD	*	150	180		$^\circ\text{C}$
Hysteresis	ΔTSD	*		40		$^\circ\text{C}$

Note: * These items are design target values and are not tested.

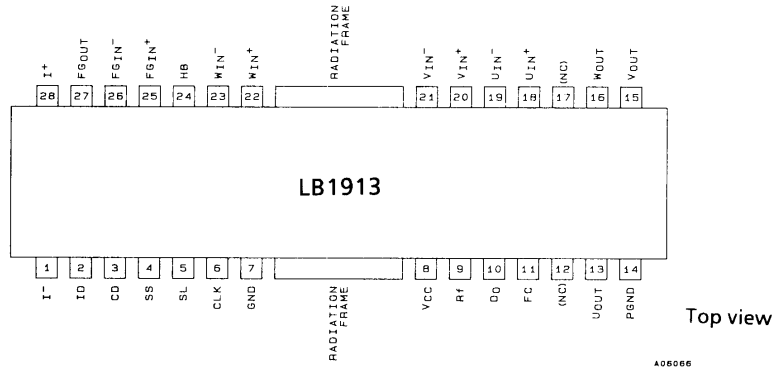
Truth Table

	Source → Sink	Hall input		
		U	V	W
1	V phase → W phase	H	H	L
2	V phase → U phase	L	H	L
3	W phase → U phase	L	H	H
4	W phase → V phase	L	L	H
5	U phase → V phase	H	L	H
6	U phase → W phase	H	L	L

A "high-level" (H) Hall amplifier input means: $U_{IN+} > U_{IN-}$
 $V_{IN+} > V_{IN-}$
 $W_{IN+} > W_{IN-}$

LB1913

Pin Assignment



Pin Functions

Pin no.	Pin	Pin voltage	Equivalent circuit	Function
18 19 20 21 22 23	U _{IN+} U _{IN-} V _{IN+} V _{IN-} W _{IN+} W _{IN-}	1.5 V min V _{CC} -1.0 V max	<p style="text-align: right;">A06069</p>	<ul style="list-style-type: none"> • U-phase Hall element input • V-phase Hall element input • W-phase Hall element input
24	HB	0.8 V typ (I _H = 5 mA)	<p style="text-align: right;">A06070</p>	<ul style="list-style-type: none"> • Minus-side pin for applying the Hall bias current This pin goes to the open state in the stopped state and the Hall bias is cut off.
25 26 27	FG _{IN+} FG _{IN-} FG _{OUT}		<p style="text-align: right;">A06071</p>	<ul style="list-style-type: none"> • FG amplifier plus input A reference voltage of 2.5 V is generated by the IC internally. • FG amplifier minus input • FG amplifier output pin
28 1	I ⁺ I ⁻		<p style="text-align: right;">A06072</p>	<ul style="list-style-type: none"> • Index input

Continued on next page

LB1913

Continued from preceding page

Pin no.	Pin	Pin voltage	Equivalent circuit	Function
2	ID	Low: 0.4 V max High: 4.5 V min	<p style="text-align: right;">A06073</p>	<ul style="list-style-type: none"> Index output
3	CD		<p style="text-align: right;">A06074</p>	<ul style="list-style-type: none"> Connection for external RC time constant circuit.
4	SS	Low: 0.8 V max High: 3.5 V min	<p style="text-align: right;">A06075</p>	<ul style="list-style-type: none"> Start/stop switching input This is an active-low input.
5	SL	Low: 1.0 V max High: 3.5 V min	<p style="text-align: right;">A06076</p>	<ul style="list-style-type: none"> Speed switching input
6	CLK	Low: 1.0 V max High: $V_{CC}-1.0$ V min	<p style="text-align: right;">A06077</p>	<ul style="list-style-type: none"> Reference clock input Use a clock rate of 1 MHz for 300 and 360 rpm speeds.
7	GND			<ul style="list-style-type: none"> Ground connection Connect this pin, pin 14, and the frame to ground.
8	V_{CC}			<ul style="list-style-type: none"> Power supply Provide a well-stabilized power supply so that ripple and noise do not enter the LB1913 from this pin.
9	Rf			<ul style="list-style-type: none"> Used for output current detection. The output current is converted to a voltage and detected by connecting a resistor (Rf) between this pin and V_{CC}. The current limiter operates by detecting the voltage on this pin.

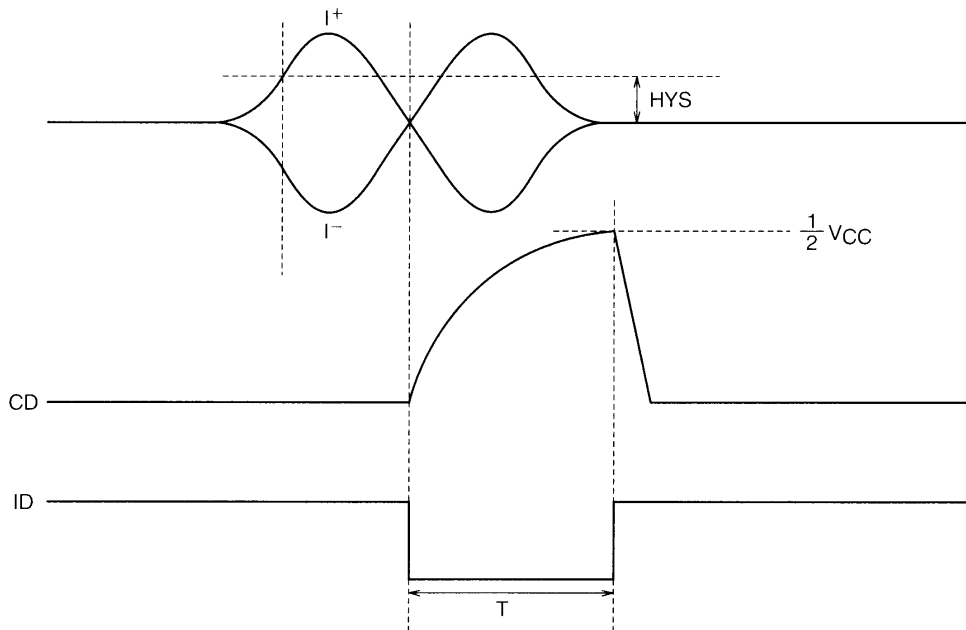
Continued on next page

LB1913

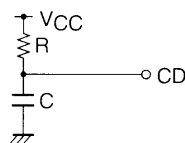
Continued from preceding page

Pin no.	Pin	Pin voltage	Equivalent circuit	Function
10	D _O			<ul style="list-style-type: none"> • Speed discriminator
11	F _C			<ul style="list-style-type: none"> • Frequency characteristics correction Current control system open loop oscillation can be prevented by inserting a capacitor between this pin and ground.
13 15 16	U _{OUT} V _{OUT} W _{OUT}			<ul style="list-style-type: none"> • U-phase output • V-phase output • W-phase output
14	PGND			<ul style="list-style-type: none"> • Output transistor ground connection

Index Delay Pulse Timing Chart

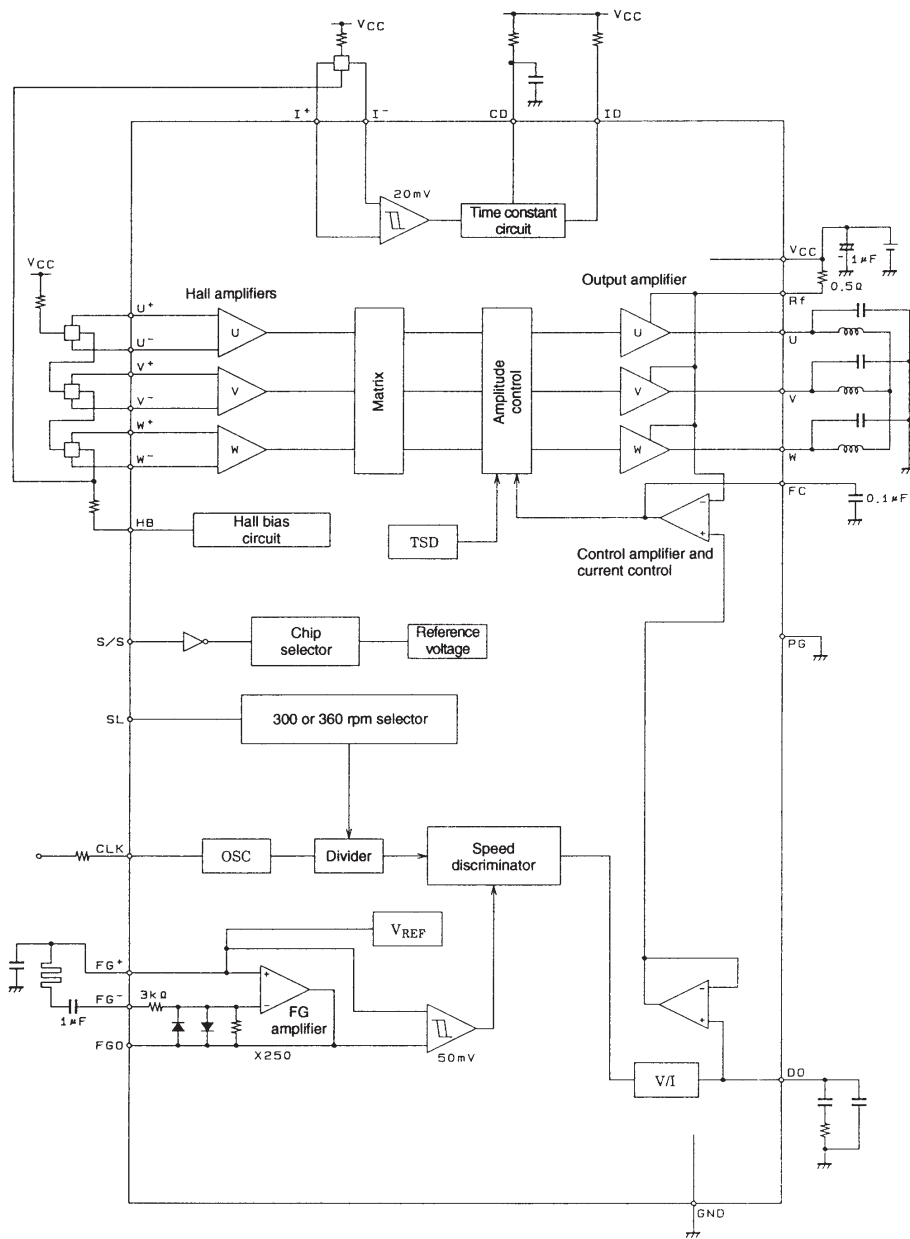


When SL = high $T_{300} \approx 0.693CR$
 When SL = low $T_{360} \approx 0.577CR$



A06067

Block Diagram



A06068

- No products described or contained herein are intended for use in surgical implants, life-support systems, aerospace equipment, nuclear power control systems, vehicles, disaster/crime-prevention equipment and the like, the failure of which may directly or indirectly cause injury, death or property loss.
- Anyone purchasing any products described or contained herein for an above-mentioned use shall:
 - ① Accept full responsibility and indemnify and defend SANYO ELECTRIC CO., LTD., its affiliates, subsidiaries and distributors and all their officers and employees, jointly and severally, against any and all claims and litigation and all damages, cost and expenses associated with such use:
 - ② Not impose any responsibility for any fault or negligence which may be cited in any such claim or litigation on SANYO ELECTRIC CO., LTD., its affiliates, subsidiaries and distributors or any of their officers and employees jointly or severally.
- Information (including circuit diagrams and circuit parameters) herein is for example only; it is not guaranteed for volume production. SANYO believes information herein is accurate and reliable, but no guarantees are made or implied regarding its use or any infringements of intellectual property rights or other rights of third parties.

This catalog provides information as of August, 1996. Specifications and information herein are subject to change without notice.