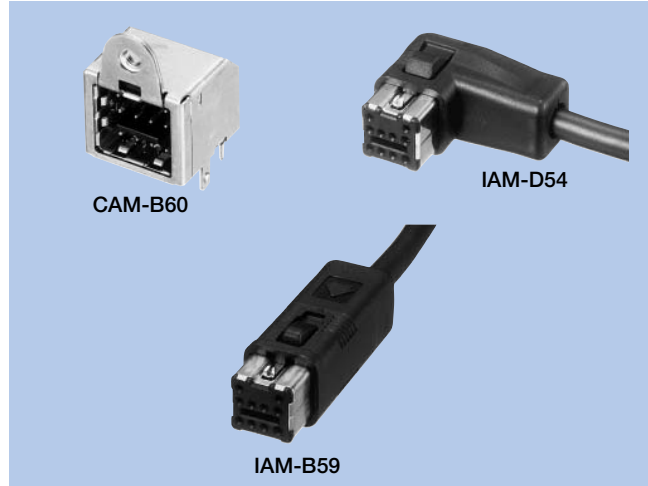


Rectangular Connectors IAM-B59 · D54, CAM-B60 Series

FEATURES

1. These are external interface connectors for 8, 10, and 12 pins. IAM-B59 is a cable assembly straight socket. IAM-D54 is L socket (left out). CAM-B60 is an angle plug.
2. In addition to signal terminals, two pins power terminals are provided.
3. Provided with a key to prevent insertion in sockets with a different terminal count.
4. A lock device ensures reliable interfitting.



HOW TO ORDER

1. IAM-B59, D54 Series

□ □ □ - □ □ □ - □ □ □ □

- 1 Series No. (B59 : Straight type, D54 : Left out)
- 2 No. of contacts (008 : 8pins, 010 : 10pins, 012 : 12pins)
- 3 Product Specifications

4. CAM-B60 Series

B60 - □ □ □ - **02 0** - **I I B A A** - □

- 1 Series No. (B60)
- 2 No. of contacts (008 : 8pins, 010 : 10pins, 012 : 12pins)
- 3 Housing material (02 : PBT)
- 4 UL grade (0 : UL94V-0)
- 5 Contact plating (I : Tin reflow plating)
- 6 Contact plating thickness (I : 1.0µm)
- 7 Contact tail style (B : Angle)
- 8 Accessory for Connector outside (A : None)
- 9 Accessory for Connector inside (A : None)
- 10 Shield case flange (No symbol : with M2.6, I : without, B : M3)

SPECIFICATIONS

ELECTRICAL CHARACTERISTICS

Rated Voltage	30V DC
Rated Current	Signal terminal : 1A (Power terminal : 4A)
Withstanding Voltage	500V AC (rms) 1minute
Insulation Resistance	100MΩ min.
Contact Resistance	30mΩ max.

MECHANICAL CHARACTERISTICS

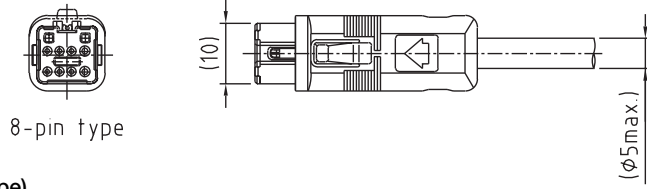
Life (Matching Cycle)	200 times
Total Insertion Force	49N (5kgf) max.
Total Withdrawal Force	3~49N (0.3~5kgf)
Using Temperature Range	-30~+85°C

MATERIAL & FINISH

Component Parts		Material	Finish
IAM-B59 Series	Socket Housing	PBT resin	—
	Contact	Copper Alloy	Tin reflow plating
	Shielded Case	Copper Alloy	Nickel plating
	Lock	Copper Alloy	Nickel plating
	Cover	PBT resin	—
	Cord Clamper	Aluminum	—
IAM-D54 Series	Socket Housing	PBT resin	—
	Contact	Copper Alloy	Tin reflow plating
	Shielded Case	Copper Alloy	Nickel plating
	Lock	Copper Alloy	Nickel plating
	Cover	PBT resin	—
	Slider Clamper	Copper Alloy Aluminum	Nickel plating —
CAM-B60 Series	Housing	PBT resin	Black
	Shielded Case	Steel	Tin reflow plating
	Inner Shielded Contact	Copper Alloy Copper Alloy	Tin reflow plating Tin reflow plating
	Guide Pin	Stainless	(For 12-pin use only.)

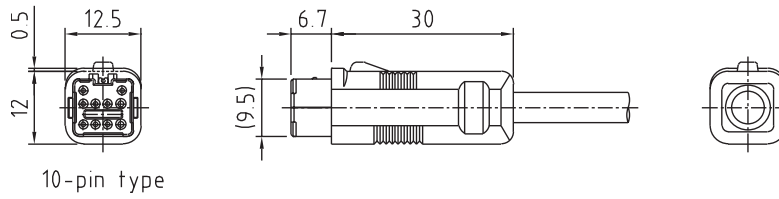
DIMENSIONS

IAM-B59 Series (8-pin type)



8-pin type

IAM-B59 Series (10-pin type)



10-pin type

IAM-B59 Series (12-pin type)

