

Distribution Block

Altech CDB Compact Distribution Blocks are an ideal choice for a simplified distribution system. A lug/bolt secures the incoming cable and the screw clamp design of the block provides the outgoing connections. These provide easy connect points and ensure perfect continuity for distribution. A protective shield effectively shrouds the incoming connection.

Application Information:

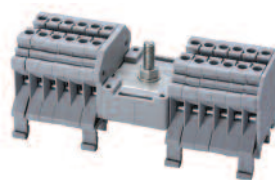
Sum of outgoing currents on either side of center should not exceed half the maximum permissible incoming current.

Sum of total outgoing currents should not exceed maximum permissible incoming current.

Connection for higher outgoing currents should be done through the terminal nearest to the incoming connection.



CDB4/x



CDB4/x(1)



Terminal Width	6 mm			6 mm			
Height & Width	45 x 43 mm			45 x 43 mm			
Stripping Length	9 mm			9 mm			
Insulation Material	Polyamide 6.6			Polyamide 6.6			
Type of Connection	Input	1 Lug/ M5 bolt connection for ring lug			Output	1 Lug M5 /bolt connection for ring lug	
	Output	Screw clamp connection			Output	Screw clamp connection	
Approvals							
Wire Range	Input	10-8 AWG	6-16 sq.mm	10-8 AWG	10-8 AWG	6-16 sq.mm	10-8 AWG
	Output	22-12 AWG	0.5-4 sq.mm	22-10 AWG	22-12 AWG	0.5-4 sq.mm	22-10 AWG
Voltage Rating	600 V		800 V	600 V		800 V	600 V
Current Rating	Input	50 A		50 A	50 A	32 A	50 A
	Max. Individual Output	25 A	32 A	35 A	25 A	32 A	35 A
Torque	Input	26 lb-in	2.0 Nm	26 lb-in	26 lb-in	2.0 Nm	26 lb-in
	Output	7 lb-in	0.5 Nm	7 lb-in	7 lb-in	0.5 Nm	7 lb-in

Other Approvals



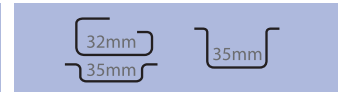
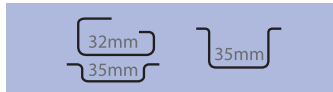
Terminal Block

Cat. No.	H x W x L (mm)	Outputs	Std. Pk.	Cat. No.	H x W x L (mm)	Outputs	Std. Pk.
CDB4/1	45 x 43 x 43.8	4	10	CDB4/2(1)	45 x 43 x 52	4	10
CDB4/2	45 x 43 x 55.8	8	10	CDB4/3(1)	45 x 43 x 58	6	10
CDB4/3	45 x 43 x 67.8	12	10	CDB4/4(1)	45 x 43 x 64	8	5
CDB4/4	45 x 43 x 80	16	5	CDB4/5(1)	45 x 43 x 70	10	5
CDB4/5	45 x 43 x 96	20	5	CDB4/6(1)	45 x 43 x 76	12	5
				CDB4/10(1)	45 x 43 x 100	20	5
				CDB4/11(1)	45 x 43 x 106	22	5

Cat. No. Std. Pk.

Cat. No. Std. Pk.

DIN Rail for ordering information refer to page 70



End Stop for ordering information refer to page 72



CA702 50
CA802 50

CA702 50
CA802 50

Marking Tags (MT Type)



MT6 100

MT6 100

Warning Label

COLOR BLOCKS

(other than grey standard)

When ordering please add color suffix to Cat. No.

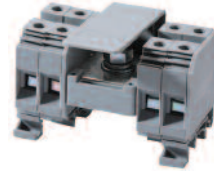
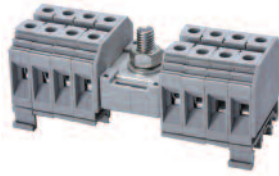
Example: CTS2.5U-N/R

Color	Ordering Suffix
Red	R
Blue	BU
Black	BL
Orange	O
Green	G
Yellow	Y
White	W
Beige	BG
Dark Brown	DB

CDB6/x

CDB10/x

CDB25/x



8 mm

10 mm

12 mm

43 x 47 mm

43 x 47 mm

56 x 49 mm

12 mm

12 mm

18 mm

Polyamide 6.6

Polyamide 6.6

Polyamide 6.6

1 Lug/ M6 bolt connection for ring lug
Screw clamp connection

1 Lug/ M8 bolt connection for ring lug
Screw clamp connection

1 Lug/ M8 bolt connection for ring lug
Screw clamp connection

10-2 AWG 22-8 AWG	6-25 sq.mm 1.5-6 sq.mm	10-2 AWG 22-8 AWG	600 V	8-1/0 AWG 22-6 AWG	10-35 sq.mm 1.5-10 sq.mm	8-1/0 AWG 22-6 AWG	600 V	6-2/0 AWG 12-2 AWG	10-50 sq.mm 6-25 sq.mm	6-2/0 AWG 12-2 AWG	600 V
600 V	800 V	600 V	600 V	600 V	800 V	600 V	600 V	600 V	800 V	600 V	600 V
100 A 50 A	41 A	100 A 50 A	100 A 50 A	125 A 65 A	57 A	130 A 65 A	150 A 75 A	150 A 75 A	101 A	150 A 75 A	150 A 75 A
25 lb-in 9 lb-in	3.0 Nm 0.8 Nm	35 lb-in 14 lb-in	53 lb-in 14 lb-in	53 lb-in 14 lb-in	6.0 Nm 1.2 Nm	53 lb-in 14 lb-in	53 lb-in 14 lb-in	53 lb-in 14 lb-in	6.0 Nm 2 Nm	53 lb-in 14 lb-in	53 lb-in 14 lb-in



Cat. No.	H x W x L (mm)	Outputs	Std. Pk.	Cat. No.	H x W x L (mm)	Outputs	Std. Pk.	Cat. No.	H x W x L (mm)	Outputs	Std. Pk.
CDB6/2	43 x 47 x 64	8	10	CDB10/2	43 x 47 x 72	8	10	CDB25/2	56 x 49 x 88	8	10
CDB6/3	43 x 47 x 80	12	10	CDB10/3	43 x 47 x 92	12	10	CDB25/3	56 x 49 x 112	12	10
CDB6/4	43 x 47 x 96	16	5	CDB10/4	43 x 47 x 112	16	5	CDB25/4	56 x 49 x 136	16	5

Cat. No.	Std. Pk.	Cat. No.	Std. Pk.	Cat. No.	Std. Pk.
	50		50		50
CA702	50	CA702	50	CA702	50
CA802	50	CA802	50	CA802	50
MT8	100	MT10	100	MT12	100
SWL6	100				

① UL recognition in progress.

Distribution Block

CMDB blocks are the modified version of CDB terminal blocks without central incoming terminal connections.



	CMDB4/X			CMDB6/X			CMDB10/X		
Terminal Width	6 mm			8 mm			10 mm		
Height & Width	45 x 43 mm			43 x 47 mm			43 x 47 mm		
Stripping Length	9 mm			12 mm			12 mm		
Insulation Material	Polyamide 6.6			Polyamide 6.6			Polyamide 6.6		
Type of Connection	Screw clamp connection			Screw clamp connection			Screw clamp connection		
Approvals	UL ^①			UL ^①			UL ^①		
Wire Range	Input 22-10 AWG	Output 0.5-4 sq.mm	22-10 AWG	Input 22-8 AWG	Output 1.5-6 sq.mm	22-8 AWG	Input 22-6 AWG	Output 1.5-10 sq.mm	20-6 AWG
Voltage Rating	600 V	800 V	600 V	600 V	800 V	600 V	600 V	800 V	600 V
Current Rating	Input 30 A	Max. Individual 32 A	Output 30 A	Input 50 A	Max. Individual 41 A	Output 50 A	Input 65 A	Max. Individual 57 A	Output 65 A
Torque	Input 7 lb-in	Output 0.5 Nm	7 lb-in	Input 9 lb-in	Output 0.8 Nm	14 lb-in	Input 14 lb-in	Output 1.2 Nm	14 lb-in

Other Approvals

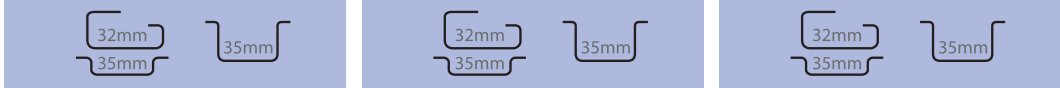
	RoHS			RoHS			RoHS					
	Cat. No.	H x W x L (mm)	Outputs	Std. Pk.	Cat. No.	H x W x L (mm)	Outputs	Std. Pk.	Cat. No.	H x W x L (mm)	Outputs	Std. Pk.

Terminal Block

CMDB4/2	45 x 43 x 13.5	4	10	CMDB6/2	43 x 48 x 17.5	4	10	CMDB10/2	43 x 48 x 21.5	4	10
CMDB4/3	45 x 43 x 19.5	6	10	CMDB6/3	43 x 48 x 25.5	6	10	CMDB10/3	43 x 48 x 31.5	6	10
CMDB4/4	45 x 43 x 25.5	8	5	CMDB6/4	43 x 48 x 33.5	8	10	CMDB10/4	43 x 48 x 41.5	8	10
CMDB4/10	45 x 43 x 61.5	20	5	CMDB6/10	43 x 48 x 81.5	20	5	CMDB10/10	43 x 48 x 101.5	20	5

	Cat. No.	Std. Pk.	Cat. No.	Std. Pk.	Cat. No.	Std. Pk.
--	----------	----------	----------	----------	----------	----------

DIN Rail for ordering information refer to page 70



End Stop for ordering information refer to page 72

CA702	50	CA702	50	CA702	50
CA802	50	CA802	50	CA802	50

Marking Tags (MT Type)

MT6	100	MT8	100	MT10	100
-----	-----	-----	-----	------	-----

Warning Label

SWL6 100

COLOR BLOCKS
(other than grey standard)

When ordering please add color suffix to Cat. No.

Example: CTS2.5U-N/R

Color	Ordering Suffix
Red	R
Blue	BU
Black	BL
Orange	O
Green	G
Yellow	Y
White	W
Beige	BG
Dark Brown	DB

① UL recognition in progress.