

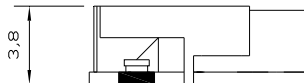
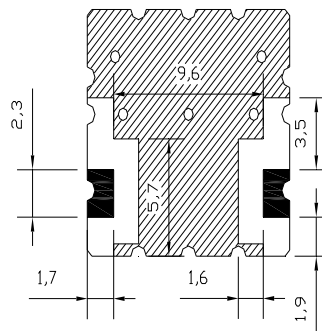


1802.5 MHz Ceramic Bandpass Filter

P/N: AM1802B1175

ITEM	In >>> Out
Center frequencies	1802.5 MHz
Band width	95 MHz
Insertion Loss	1.5 dB max.
Ripple	0.5 dB max.
Return Loss	10.0 dB min.
Attenuation	45 dB min @ 1450 MHz
	40 dB min @ 2150 MHz
Average Power	3W max
In/Out Impedance	50 ohm
Temperature range	-40 ~ +85°C
This product is RoHs Compliant	

DIMENSIONS



 IN/ OUT TOLERANCE UNLESS SPECIFIED: +/-0.2mm
 GROUND

