



P/N AM1880B225

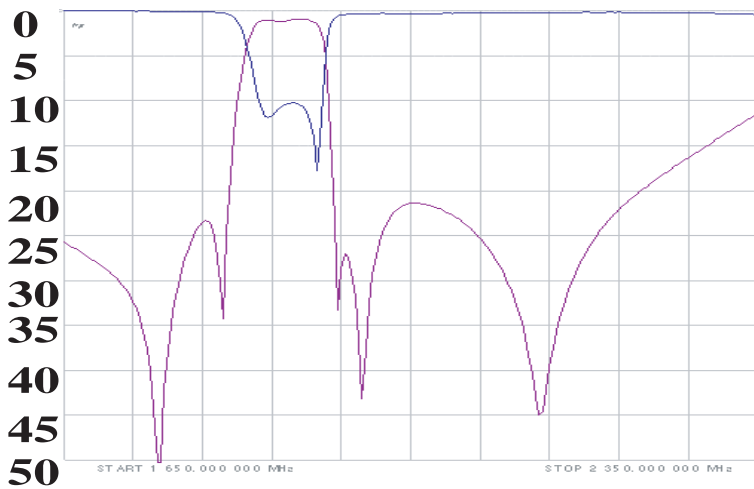


Meets RoHS requirements

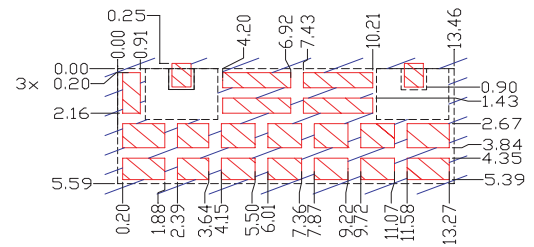
**Electrical Specifications**

Parameter	Frequency (MHz)	Typical @ 25°C	Spec. @ 25°C	Spec. Over -30°C to +85°C
Passband Insertion Loss	1850-1910	2.7 dB	3.0 dB max	3.4 dB max
Passband Ripple	1850-1910	1.6dB	1.9 dB max	2.1 dB max
Passband Return Loss @ TX	1850-1910	10.0 dB	8.5 dB min	8.0dB min
Passband Return Loss @ ANT	1850-1910	10.0 dB	8.5 dB min	8.0dB min
Attenuation:	1920	15.0 dB	13.0 dB min	12.5 dB min
	1930-1990	21.0 dB	17.0 dB min	17.0 dB min
Power			2 Watts	

**Electrical response**

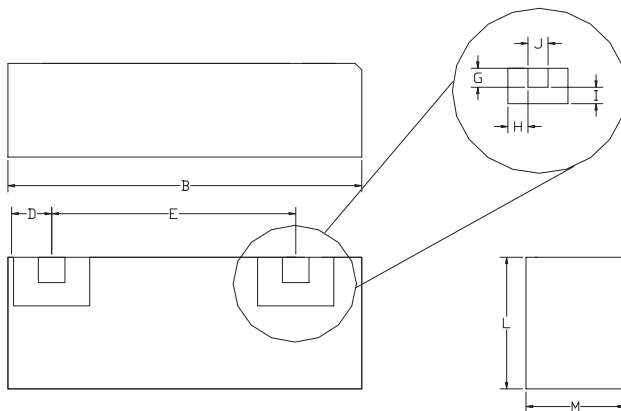


**PCB Layout**



- Filter Outline
- Exposed Conductor
- Solder Resist Over Conductor

**Mechanical Drawing**



Dim	Nominal (mm)	Tolerance (mm) +/- or max
A		
B	13.67	max
C		
D	1.66	0.13
E	9.25	0.13
F		
G	1.02	0.13
H	0.94	0.13
I	0.94	0.13
J	1.02	0.13
K		
L	5.64	max
M	6.12	max

