



P/N AM1880B263

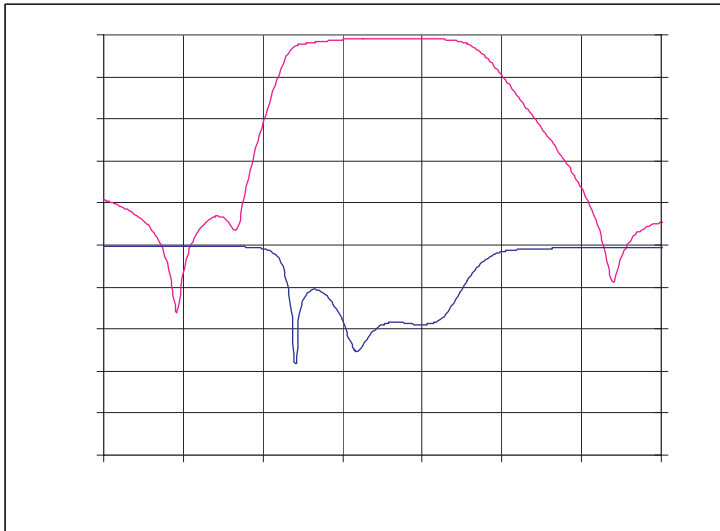


Meets RoHS requirements

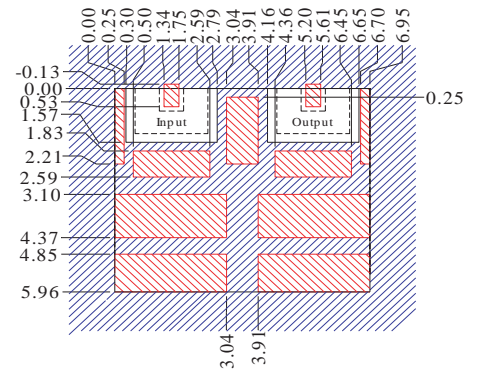
Electrical Specifications

Parameter	Frequency (MHz)	Typical @ 25°C	Spec. over -40°C to +85°C
Passband Insertion Loss	1850 - 1910	1.0 dB	1.9 dB max
Passband Return Loss @ input	1850 - 1910	17.0 dB	10 dB min
Passband Ripple	1850 - 1910	.20 dB	0.8 dB max
Attenuation:	1780	42.0 dB	15 dB min
	1980	24.0 dB	15 dB min
Power into any port		1 Watt max	

Electrical response



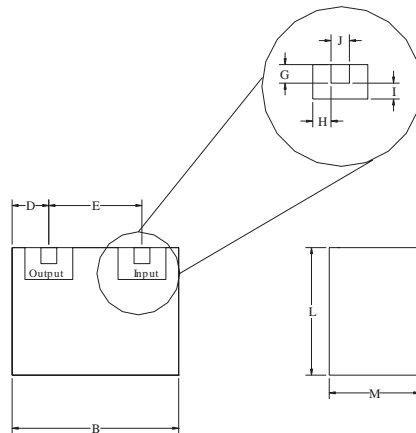
PCB Layout



Dimensions are in mm. Tolerance = +/- 0.13

- Filter Outline
- Exposed Conductor
- Solder Resist Over Conductor
- Solder Resist Over Dielectric

Mechanical Drawing



Dim	Nominal (mm)	Tolerance (mm) +/- or max
A		
B	7.05	max
C		
D	1.55	0.25
E	3.86	0.13
F		
G	0.66	0.13
H	0.66	0.13
I	0.66	0.13
J	0.66	0.13
K		
L	5.9	max
M	4.0	max

