

TOSHIBA CMOS Digital Integrated Circuit Silicon Monolithic

# TC7MPB9307FT/FK

## Low Voltage/Low Power 8-Bit Dual Supply Bus Switch

The TC7MPB9307 is a CMOS 8-bit dual-supply bus switch that can provide an interface between two nodes at different voltage levels.

The TC7MPB9307 can be connected to two independent power supplies.  $V_{CCA}$  supports 1.8-V, 2.5-V and 3.3-V power supplies, whereas  $V_{CCB}$  supports 2.5-V, 3.3-V and 5.0V power supplies.

Bidirectional level-shifting is possible by simply adding external pull-up resistors between the An/Bn data lines and the  $V_{CCA}/V_{CCB}$  supplies. There is no restriction on the relative magnitude of the An and Bn voltages; both the An and Bn data lines can be pulled up to arbitrary power supplies.

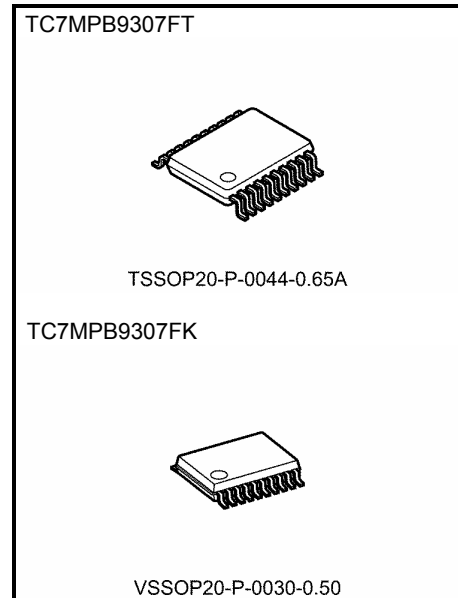
The Output Enable ( $\overline{OE}$ ) input controls the connection or isolation of two bus systems on the  $V_{CCA}$  and  $V_{CCB}$  sides.

The  $\overline{OE}$  input is common for all the eight bits of the data lines; thus the TC7MPB9307 is used as a single eight-bit bus switch. When  $\overline{OE}$  is Low, the switch is on, and An is connected to Bn. When  $\overline{OE}$  is High, the switch is open.

The TC7MPB9307 supports power-down protection at the  $\overline{OE}$  input, with  $\overline{OE}$  being 5.5-V tolerant.

The channels consist of n-type MOSFETs.

All the inputs provide protection against electrostatic discharge.

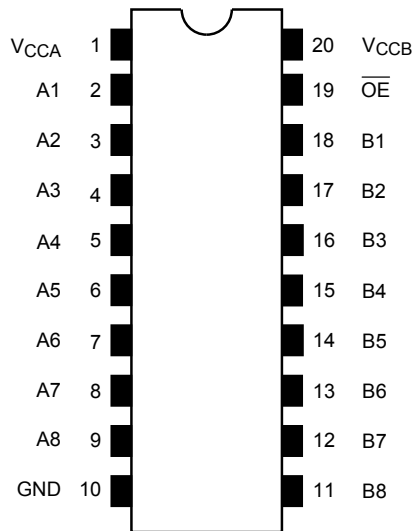


Weight	
TSSOP20-P-0044-0.65A	: 0.08 g (typ.)
VSSOP20-P-0030-0.50	: 0.03 g (typ.)

## Features

- Operating voltage: 1.8-V to 2.5-V, 1.8-V to 3.3-V, 1.8-V to 5.0-V, 2.5-V to 3.3-V, 2.3-V to 5.0-V or 3.3-V to 5.0-V bidirectional interface
- Operating voltage:  $V_{CCA} = 1.65$  to 5.0 V,  $V_{CCB} = 2.3$  to 5.5 V
- Low ON-resistance:  $R_{ON} = 5.0 \Omega$  (typ.)  
(ON-resistance test circuit:  $V_{IS} = 0$  V,  $I_{IS} = 30$  mA,  $V_{CCA} = 3.0$  V,  $V_{CCB} = 4.5$  V)
- ESD performance: Machine model  $\geq \pm 200$  V  
Human body model  $\geq \pm 2000$  V
- 5.5-V tolerance and power-down protection at the Output Enable input.
- Packages: TSSOP20, VSSOP(20)

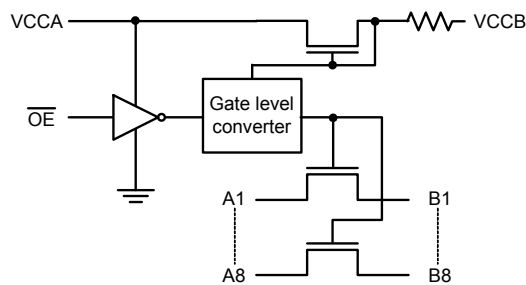
## Pin Assignment (top view)



## Truth Table

Inputs	Function
$\overline{OE}$	
L	A port = B port
H	Disconnect

## Circuit Schematic



## Absolute Maximum Ratings (Note)

Characteristics	Symbol	Rating	Unit
Power supply voltage	$V_{CCA}$	-0.5 to 7.0	V
	$V_{CCB}$	-0.5 to 7.0	
Control input voltage	$V_{IN}$	-0.5 to 7.0	V
Switch input/output voltage	$V_S$	-0.5 to 7.0	V
Clump diode current	$I_{IK}$	-50	mA
Switch input/output current	$I_S$	64	mA
DC $V_{CC}$ /ground current per supply pin	$I_{CCA}$	$\pm 25$	mA
	$I_{CCB}$	$\pm 25$	
Power dissipation	$P_D$	180	mW
Storage temperature	$T_{stg}$	-65~150	°C

Note: Exceeding any of the absolute maximum ratings, even briefly, lead to deterioration in IC performance or even destruction.

Using continuously under heavy loads (e.g. the application of high temperature/current/voltage and the significant change in temperature, etc.) may cause this product to decrease in the reliability significantly even if the operating conditions (i.e. operating temperature/current/voltage, etc.) are within the absolute maximum ratings and the operating ranges.

Please design the appropriate reliability upon reviewing the Toshiba Semiconductor Reliability Handbook ("Handling Precautions"/"Derating Concept and Methods") and individual reliability data (i.e. reliability test report and estimated failure rate, etc).

## Operating Ranges (Note 1)

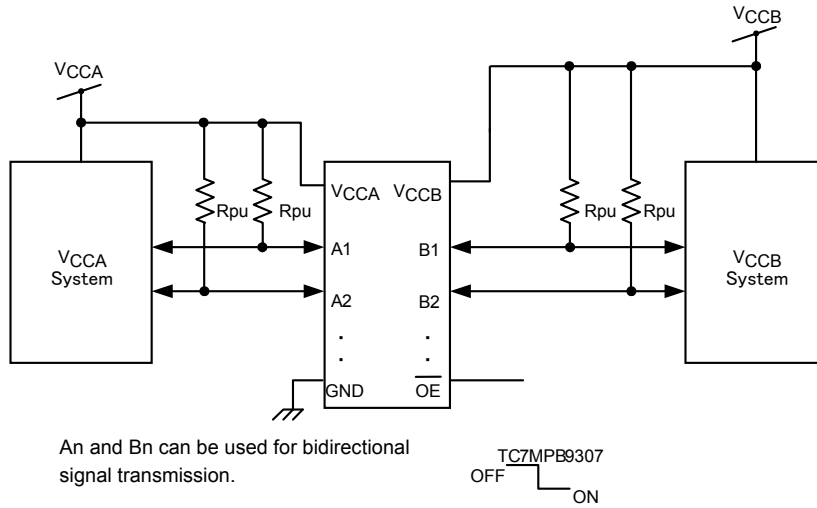
Characteristics	Symbol	Rating	Unit
Power supply voltage (Note 2)	$V_{CCA}$	1.65 to 5.0	V
	$V_{CCB}$	2.3 to 5.5	
Control input voltage	$V_{IN}$	0 to 5.5	V
Switch input/output voltage	$V_S$	0 to 5.5	V
Operating temperature	$T_{opr}$	-40 to 85	°C
Control input rise and fall times	$dt/dv$	0 to 10	ns/V

Note 1: The operating ranges must be maintained to ensure the normal operation of the device.

Unused inputs and bus inputs must be tied to either  $V_{CCA}$  or GND.

Note 2: The  $V_{CCA}$  voltage must be lower than the  $V_{CCB}$  voltage.

**Application Circuit**



**Figure 1 Application Circuit Diagram**

The  $V_{CCA}$  voltage must be lower than the  $V_{CCB}$  voltage.

Level-shifting functionality is enabled by adding pull-up resistors from An to  $V_{CCA}$  or  $V_{CCB}$  and from Bn to  $V_{CCB}$  or  $V_{CCA}$ , respectively.

**Electrical Characteristics**

**DC Characteristics (Ta = -40 to 85°C)**

Characteristics		Symbol	Test Condition	V <sub>CCA</sub> (V)	V <sub>CCB</sub> (V)	Ta = -40to85°C		Unit
						Min	Max	
Control input voltage	High-level	V <sub>IH</sub>	—	1.65 ≤ V <sub>CCA</sub> < 2.3	V <sub>CCA</sub> to 5.5	0.8 × V <sub>CCA</sub>	—	V
				2.3 ≤ V <sub>CCA</sub> < 5.0	V <sub>CCA</sub> to 5.5	0.7 × V <sub>CCA</sub>	—	
	Low-level	V <sub>IL</sub>	—	1.65 ≤ V <sub>CCA</sub> < 2.3	V <sub>CCA</sub> to 5.5	—	0.2 × V <sub>CCA</sub>	
				2.3 ≤ V <sub>CCA</sub> < 5.0	V <sub>CCA</sub> to 5.5	—	0.3 × V <sub>CCA</sub>	
ON-resistance (Note)	R <sub>ON</sub>	V <sub>IS</sub> = 0V, I <sub>IS</sub> = 30mA (Figure 2)	1.65	2.3	—	16.0	Ω	
			2.3	3.0	—	11.0		
			3.0	4.5	—	8.0		
Power off leakage current	I <sub>OFF</sub>	An,Bn=0 to 5.5V (per circuit)	0	0	—	±1.0	μA	
Switch-off leakage current	I <sub>SZ</sub>	An,Bn=0 to 5.5V $\overline{OE} = V_{CCA}, OE=GND$	1.65 to 5.0	V <sub>CCA</sub> to 5.5	—	±1.0	μA	
Control input current	I <sub>IN</sub>	$\overline{OE} = 0$ to 5.5V	1.65 to 5.0	V <sub>CCA</sub> to 5.5	—	±1.0	μA	
leakage current form V <sub>CCB</sub> to V <sub>CCA</sub>	I <sub>CCBA</sub>	$\overline{OE} = 0$ or V <sub>CCA</sub> V <sub>CCB</sub> → V <sub>CCA</sub>	3.3	5.0	—	50.0	μA	
Quiescent supply current	I <sub>CCA1</sub>	$\overline{OE} = V_{CCA}$ or GND, I <sub>S</sub> =0A	1.65 to 5.0	V <sub>CCA</sub>	—	10.0	μA	
	I <sub>CCB1</sub>	$\overline{OE} = V_{CCA}$ or GND, I <sub>S</sub> =0A	1.65 to 5.0	V <sub>CCA</sub>	—	10.0		
	I <sub>CCA2</sub>	V <sub>CCA</sub> ≤ $\overline{OE}$ ≤ 5.5 V, I <sub>S</sub> =0A	1.65 to 5.0	V <sub>CCA</sub>	—	±10.0		
	I <sub>CCB2</sub>	V <sub>CCA</sub> ≤ $\overline{OE}$ ≤ 5.5 V, I <sub>S</sub> =0A	1.65 to 5.0	V <sub>CCA</sub>	—	±10.0		

Note: ON-resistance is measured by measuring the voltage drop across the switch at the indicated current.

**Level Shift Characteristics (Ta = -40 to 85°C)**

Characteristics	Symbol	Test Condition	V <sub>CCA</sub> (V)	V <sub>CCB</sub> (V)	Ta = -40 to 85°C		Unit
					Min	Max	
Input/Output Characteristics (Up Translation) (Note 1)	V <sub>OHU</sub>	An = V <sub>IN</sub> SW = ON (Figure 7)	1.65	3.0 to 5.5	1.4	—	V
			2.3	4.5 to 5.5	2.05	—	
			3.0	4.5 to 5.5	2.7	—	
Input/Output Characteristics (Down Translation) (Note 2)	V <sub>OHd</sub>	An = V <sub>CCA</sub> SW = ON (Figure 9)	1.65	3.3 to 5.5	1.3	1.65	V
			2.3	4.5 to 5.5	1.95	2.3	
			3.0	4.5 to 5.5	2.6	3.0	

Note 1: The Input/Output Characateristics for up translation indicate the input voltages required to provide V<sub>CCA</sub> + 0.5 V on the outputs when measured using the test circuitry shown in Figure 7.

Note 2: The Input/Output Characateristics for down translation indicate the voltages that cause the output voltages to saturate when measured using the test circuitry shown in Figure 9.

## AC Characteristics (Ta = -40 to 85°C, Input: tr = tf = 2.0 ns, f=10kHz)

VCCA = 3.3 ± 0.3 V, VCCB = 5.0 ± 0.5 V

Characteristics	Symbol	Test Condition	Min	Max	Unit
Propagation delay time (Bus to Bus)	t <sub>pLH</sub>	Figures 3 and 5 (Note)	—	0.3	ns
Propagation delay time (Bus to Bus)	t <sub>pHL</sub>	Figures 3 and 5 (Note)	—	1.2	
Output enable time	t <sub>pZL</sub>	Figures 4 and 6	—	9.0	
Output disable time	t <sub>pLZ</sub>	Figures 4 and 6	—	11.0	

Note: This parameter is guaranteed by design but is not tested. The bus switch contributes no propagation delay other than the RC delay of the typical On resistance of the switch and the 30 pF load capacitance, when driven by an ideal voltage the source (zero output impedance).

VCCA = 2.5 ± 0.2 V, VCCB = 5.0 ± 0.5 V

Characteristics	記号	Test Condition	Min	Max	Unit
Propagation delay time (Bus to Bus)	t <sub>pLH</sub>	Figures 3 and 5 (Note)	—	0.35	ns
Propagation delay time (Bus to Bus)	t <sub>pHL</sub>	Figures 3 and 5 (Note)	—	1.8	
Output enable time	t <sub>pZL</sub>	Figures 4 and 6	—	13.0	
Output disable time	t <sub>pLZ</sub>	Figures 4 and 6	—	15.0	

Note: This parameter is guaranteed by design but is not tested. The bus switch contributes no propagation delay other than the RC delay of the typical On resistance of the switch and the 30 pF load capacitance, when driven by an ideal voltage the source (zero output impedance).

VCCA = 2.5 ± 0.2 V, VCCB = 3.3 ± 0.3 V

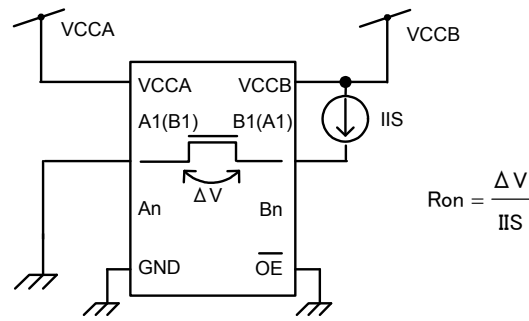
Characteristics	記号	Test Condition	Min	Max	Unit
Propagation delay time (Bus to Bus)	t <sub>pLH</sub>	Figures 3 and 5 (Note)	—	0.45	ns
Propagation delay time (Bus to Bus)	t <sub>pHL</sub>	Figures 3 and 5 (Note)	—	2.2	
Output enable time	t <sub>pZL</sub>	Figures 4 and 6	—	17.0	
Output disable time	t <sub>pLZ</sub>	Figures 4 and 6	—	19.0	

Note: This parameter is guaranteed by design but is not tested. The bus switch contributes no propagation delay other than the RC delay of the typical On resistance of the switch and the 30 pF load capacitance, when driven by an ideal voltage the source (zero output impedance).

## Capacitive Characteristics (Ta = 25°C)

Characteristics	Symbol	Test Condition			Typ.	Unit
			VCCA (V)	VCCB (V)		
Control input capacitance	C <sub>IN</sub>		3.3	3.3	3	pF
Switch input/output capacitance	C <sub>I/O</sub>	SW=ON	3.3	3.3	14	
		SW=OFF	3.3	3.3	7	

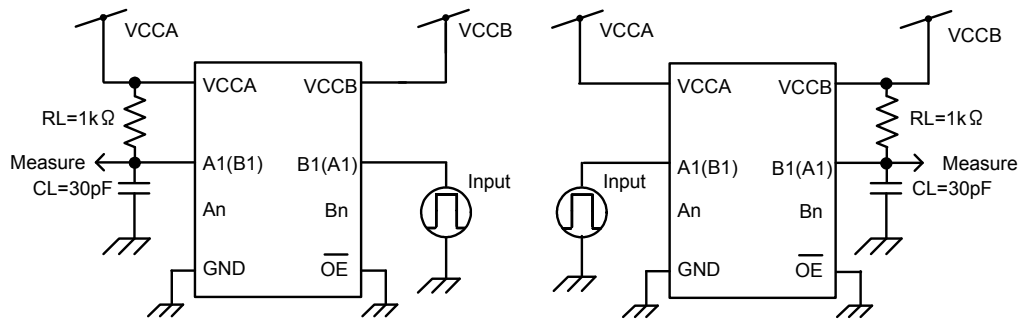
**DC Test Circuit**



**Figure 2 ON-resistance Test Circuits**

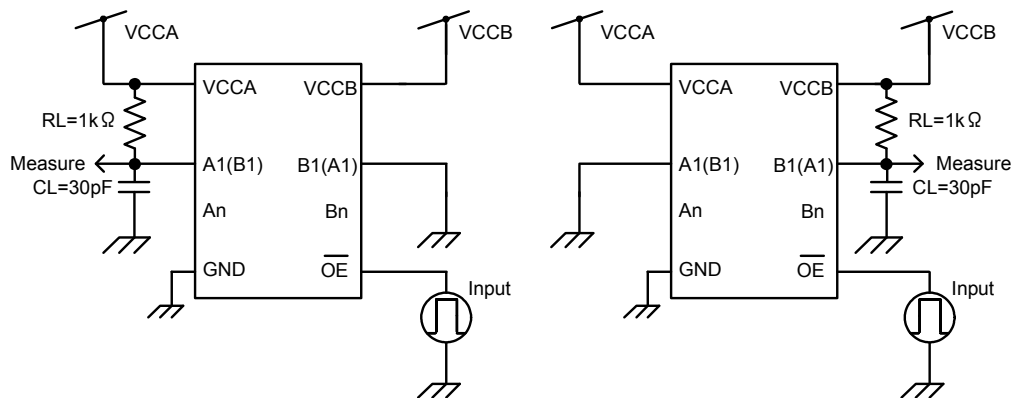
**AC Test Circuits**

• **tpLH,HL**



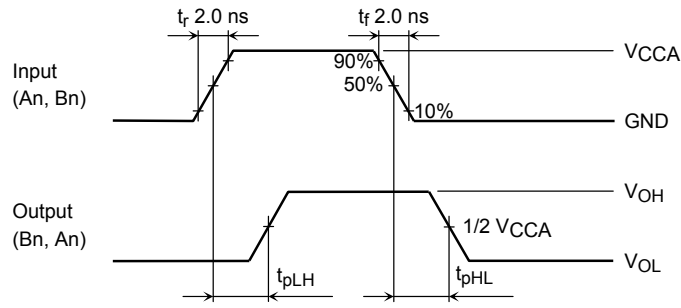
**Figure 3 tpLH, tpHL Test Circuits**

• **tpLZ,ZL**

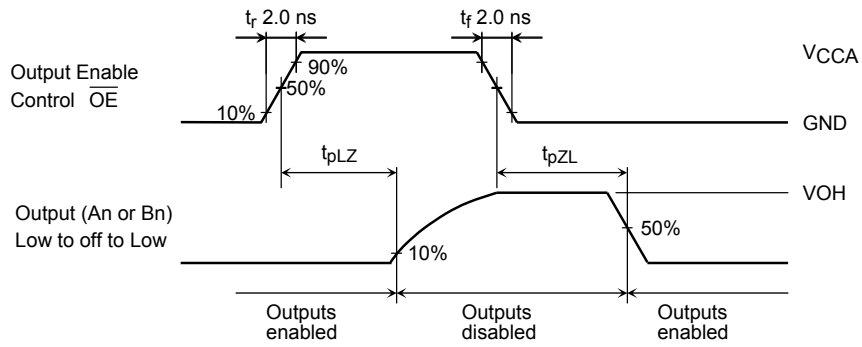


**Figure 4 tpLZ, tpZL Test Circuits**

**AC Waveform**



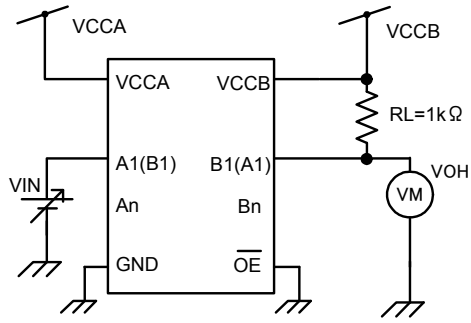
**Figure 5  $t_{pLH}$ ,  $t_{pHL}$**



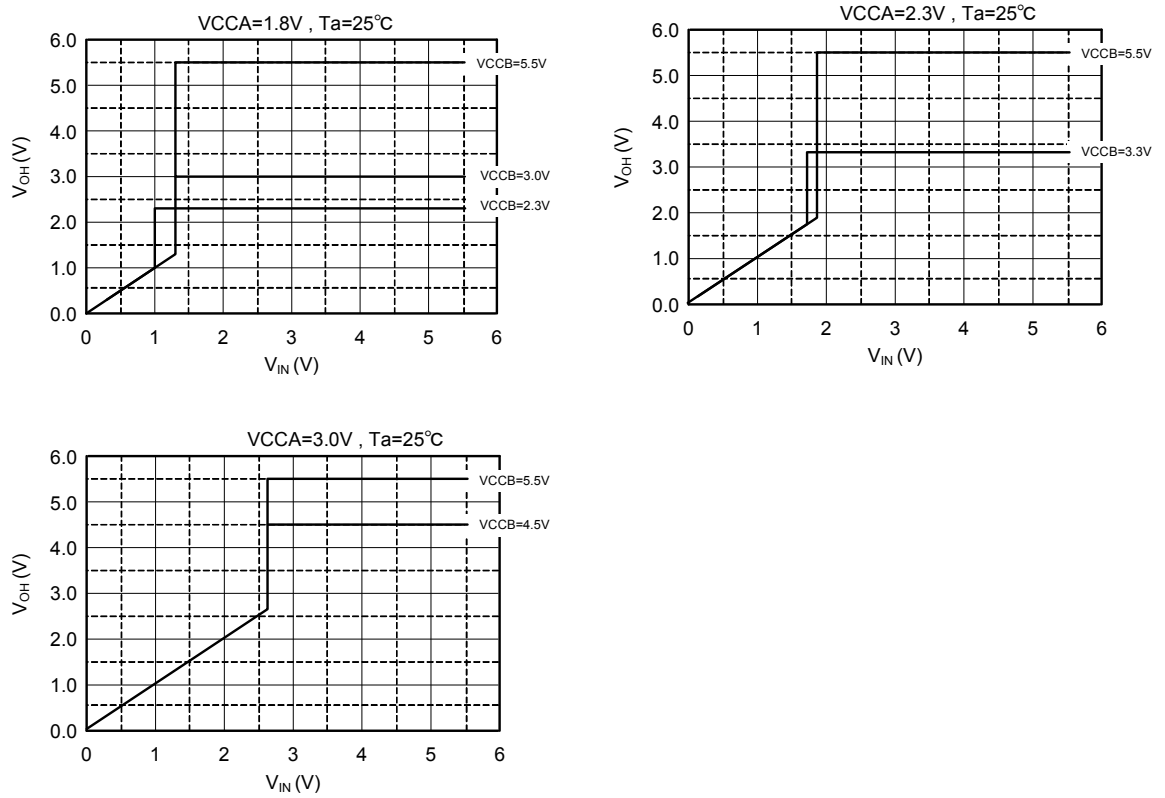
**Figure 6  $t_{pLZ}$ ,  $t_{pZL}$**



**Level Shift Function (Used Pull-up Resistance)**

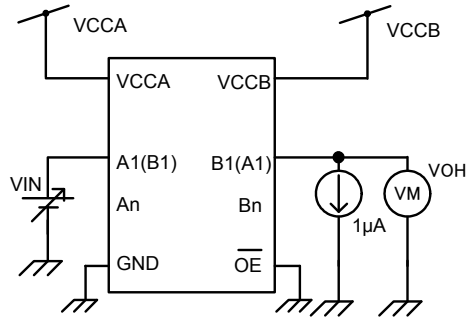


**Figure 7 Test Circuit**

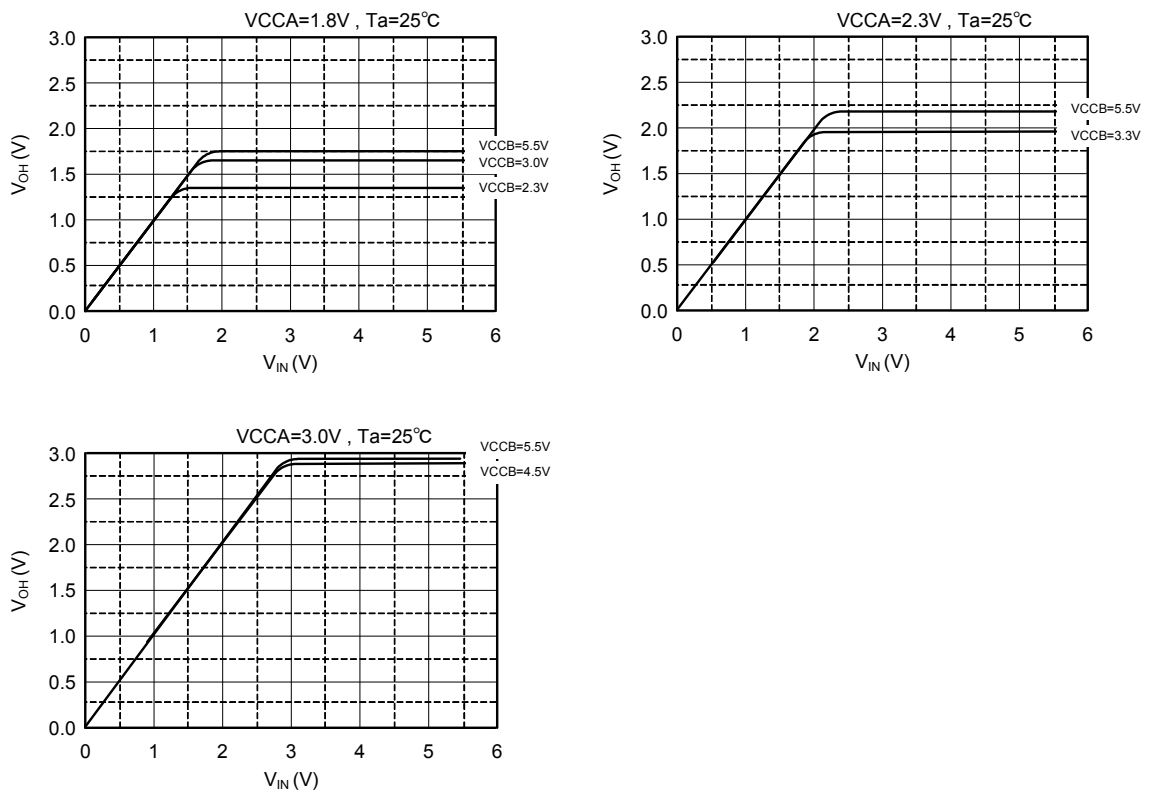


**Figure 8 Input/Output Characteristics (Typ.)**

**Level Shift Function (Unused Pull-up Resistance)**



**Figure 9 Test Circuit**

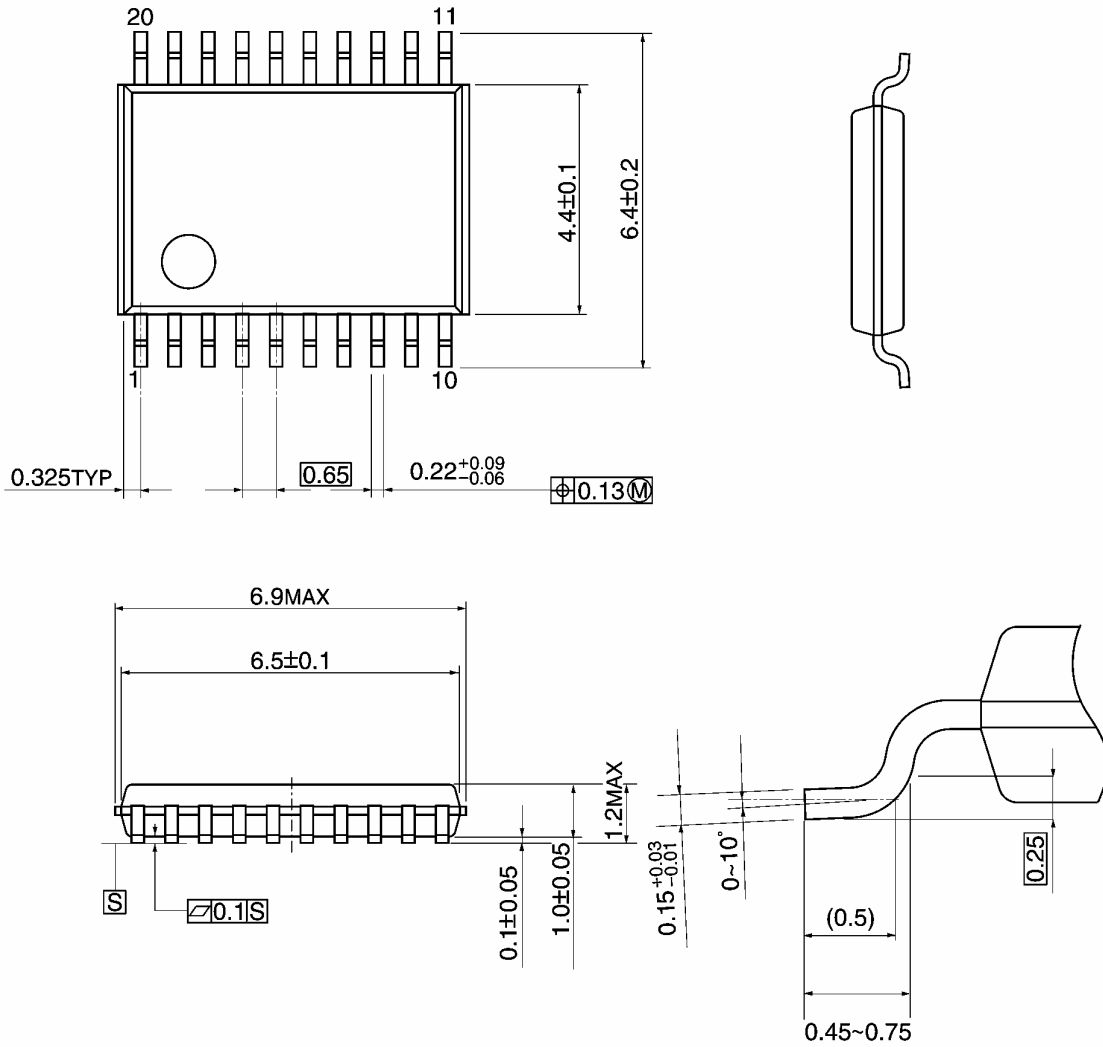


**Figure 10 Input/Output Characteristics (Typ.)**

## Package Dimensions

TSSOP20-P-0044-0.65A

Unit: mm

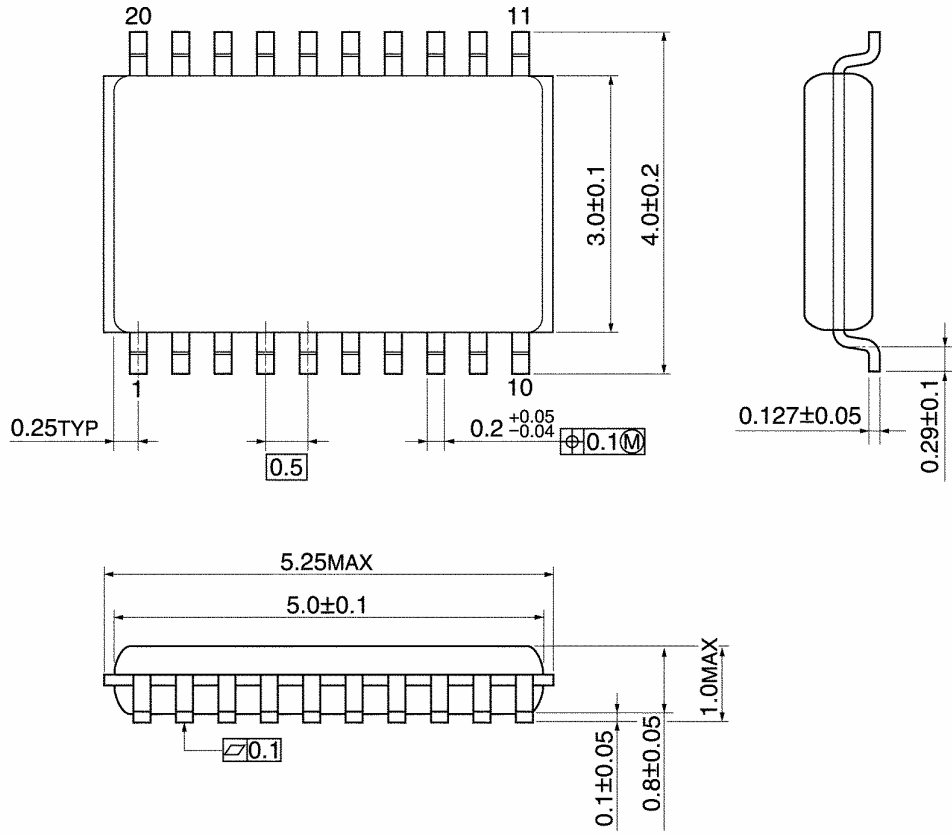


Weight: 0.08 g (typ.)

## Package Dimensions

VSSOP20-P-0030-0.50

Unit: mm



Weight: 0.03 g (Typ.)

**RESTRICTIONS ON PRODUCT USE**

20070701-EN GENERAL

- The information contained herein is subject to change without notice.
- TOSHIBA is continually working to improve the quality and reliability of its products. Nevertheless, semiconductor devices in general can malfunction or fail due to their inherent electrical sensitivity and vulnerability to physical stress. It is the responsibility of the buyer, when utilizing TOSHIBA products, to comply with the standards of safety in making a safe design for the entire system, and to avoid situations in which a malfunction or failure of such TOSHIBA products could cause loss of human life, bodily injury or damage to property.  
In developing your designs, please ensure that TOSHIBA products are used within specified operating ranges as set forth in the most recent TOSHIBA products specifications. Also, please keep in mind the precautions and conditions set forth in the "Handling Guide for Semiconductor Devices," or "TOSHIBA Semiconductor Reliability Handbook" etc.
- The TOSHIBA products listed in this document are intended for usage in general electronics applications (computer, personal equipment, office equipment, measuring equipment, industrial robotics, domestic appliances, etc.). These TOSHIBA products are neither intended nor warranted for usage in equipment that requires extraordinarily high quality and/or reliability or a malfunction or failure of which may cause loss of human life or bodily injury ("Unintended Usage"). Unintended Usage include atomic energy control instruments, airplane or spaceship instruments, transportation instruments, traffic signal instruments, combustion control instruments, medical instruments, all types of safety devices, etc.. Unintended Usage of TOSHIBA products listed in his document shall be made at the customer's own risk.
- The products described in this document shall not be used or embedded to any downstream products of which manufacture, use and/or sale are prohibited under any applicable laws and regulations.
- Please contact your sales representative for product-by-product details in this document regarding RoHS compatibility. Please use these products in this document in compliance with all applicable laws and regulations that regulate the inclusion or use of controlled substances. Toshiba assumes no liability for damage or losses occurring as a result of noncompliance with applicable laws and regulations.