

TOSHIBA Field-Effect Transistor Silicon N-Channel MOS MOS

# SSM6K403TU

- Power Management Switch Applications
- High-Speed Switching Applications

- 1.5V drive
- Low ON-resistance:  $R_{on} = 66m\Omega$  (max) (@ $V_{GS} = 1.5V$ )  
 $R_{on} = 43m\Omega$  (max) (@ $V_{GS} = 1.8V$ )  
 $R_{on} = 32m\Omega$  (max) (@ $V_{GS} = 2.5V$ )  
 $R_{on} = 28m\Omega$  (max) (@ $V_{GS} = 4.0V$ )

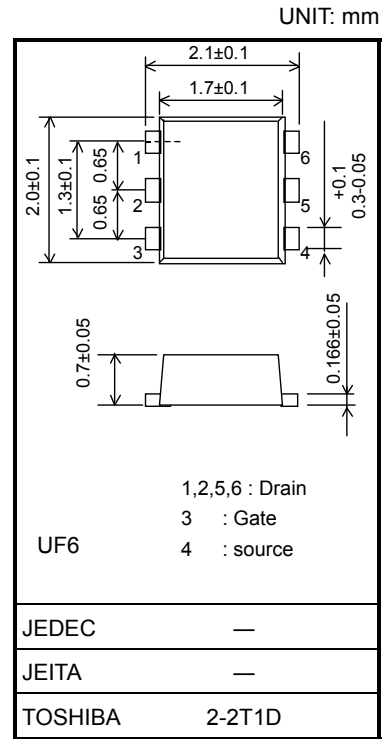
### Absolute Maximum Ratings (Ta = 25°C) (Note)

Characteristic	Symbol	Rating	Unit
Drain-source voltage	$V_{DSS}$	20	V
Gate-source voltage	$V_{GSS}$	$\pm 10$	V
Drain current	DC	$I_D$	4.2
	Pulse	$I_{DP}$	8.4
Drain power dissipation	$P_D$ (Note1)	500	mW
Channel temperature	$T_{ch}$	150	°C
Storage temperature	$T_{stg}$	-55~150	°C

Note: Using continuously under heavy loads (e.g. the application of high temperature/current/voltage and the significant change in temperature, etc.) may cause this product to decrease in the reliability significantly even if the operating conditions (i.e. operating temperature/current/voltage, etc.) are within the absolute maximum ratings.

Please design the appropriate reliability upon reviewing the Toshiba Semiconductor Reliability Handbook ("Handling Precautions"/"Derating Concept and Methods") and individual reliability data (i.e. reliability test report and estimated failure rate, etc).

Note 1: Mounted on an FR4 board  
 (25.4 mm × 25.4 mm × 1.6 t, Cu Pad: 645 mm<sup>2</sup>)



weight: 7.0mg (typ.)

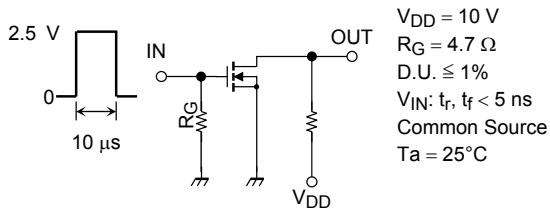
## Electrical Characteristics (Ta = 25°C)

Characteristic	Symbol	Test Condition	Min	Typ.	Max	Unit
Drain-source breakdown voltage	$V_{(BR) DSS}$	$I_D = 1 \text{ mA}, V_{GS} = 0 \text{ V}$	20	—	—	V
	$V_{(BR) DSX}$	$I_D = 1 \text{ mA}, V_{GS} = -10 \text{ V}$	12	—	—	
Drain cutoff current	$I_{DSS}$	$V_{DS} = 20 \text{ V}, V_{GS} = 0 \text{ V}$	—	—	1	$\mu\text{A}$
Gate leakage current	$I_{GSS}$	$V_{GS} = \pm 10 \text{ V}, V_{DS} = 0 \text{ V}$	—	—	$\pm 1$	$\mu\text{A}$
Gate threshold voltage	$V_{th}$	$V_{DS} = 3 \text{ V}, I_D = 1 \text{ mA}$	0.35	—	1.0	V
Forward transfer admittance	$ Y_{fs} $	$V_{DS} = 3 \text{ V}, I_D = 3.0 \text{ A}$ (Note2)	10	20	—	S
Drain-source ON-resistance	$R_{DS(ON)}$	$I_D = 3.0 \text{ A}, V_{GS} = 4.0 \text{ V}$ (Note2)	—	19	28	m $\Omega$
		$I_D = 3.0 \text{ A}, V_{GS} = 2.5 \text{ V}$ (Note2)	—	23	32	
		$I_D = 1.0 \text{ A}, V_{GS} = 1.8 \text{ V}$ (Note2)	—	28	43	
		$I_D = 0.5 \text{ A}, V_{GS} = 1.5 \text{ V}$ (Note2)	—	35	66	
Input capacitance	$C_{iss}$	$V_{DS} = 10 \text{ V}, V_{GS} = 0 \text{ V}, f = 1 \text{ MHz}$	—	1050	—	pF
Output capacitance	$C_{oss}$		—	175	—	
Reverse transfer capacitance	$C_{rss}$		—	160	—	
Total Gate Charge	$Q_g$	$V_{DD} = 10 \text{ V}, I_D = 4.2 \text{ A}$ $V_{GS} = 4 \text{ V}$	—	16.8	—	nC
Gate-Source Charge	$Q_{gs}$		—	12.1	—	
Gate-Drain Charge	$Q_{gd}$		—	4.7	—	
Switching time	Turn-on time	$t_{on}$	$V_{DD} = 10 \text{ V}, I_D = 1 \text{ A}$	—	18	ns
	Turn-off time	$t_{off}$	$V_{GS} = 0 \sim 2.5 \text{ V}, R_G = 4.7 \Omega$	—	32	
Drain-source forward voltage	$V_{DSF}$	$I_D = -4.2 \text{ A}, V_{GS} = 0 \text{ V}$ (Note2)	—	-0.8	-1.2	V

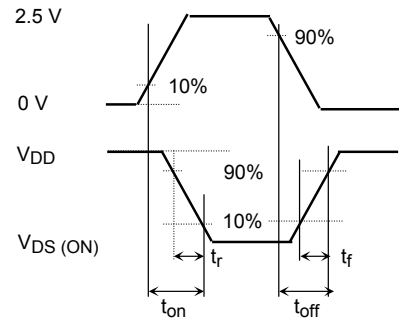
Note 2: Pulse test

## Switching Time Test Circuit

(a) Test Circuit

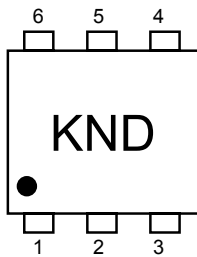


(b)  $V_{IN}$

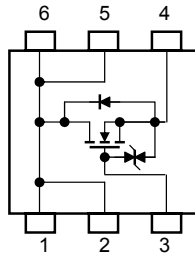


(c)  $V_{OUT}$

## Marking



## Equivalent Circuit (top view)



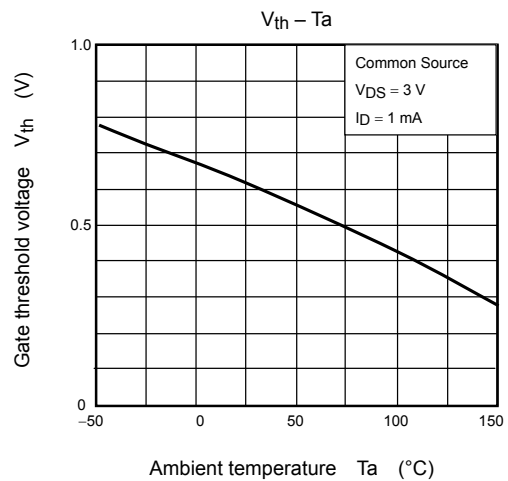
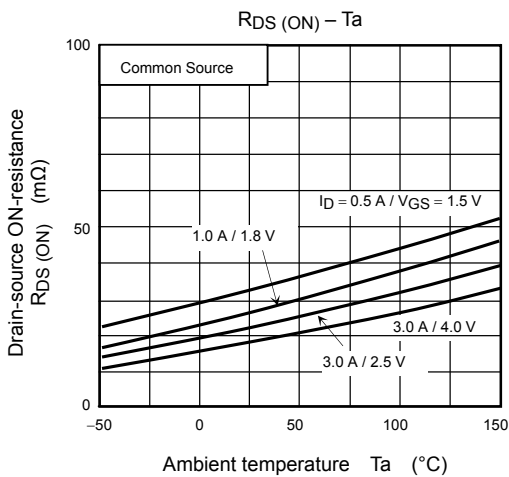
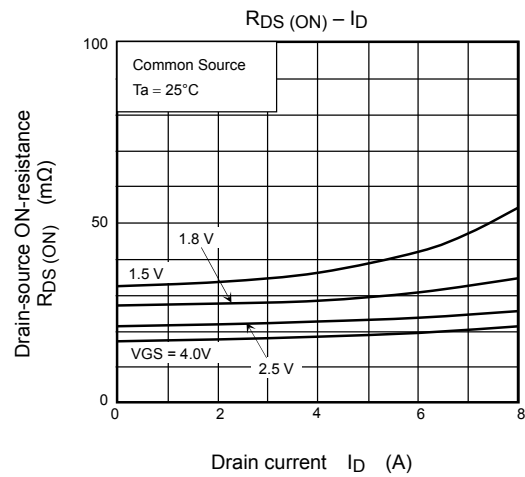
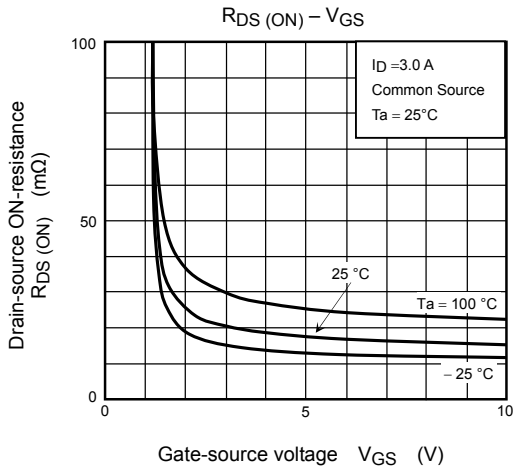
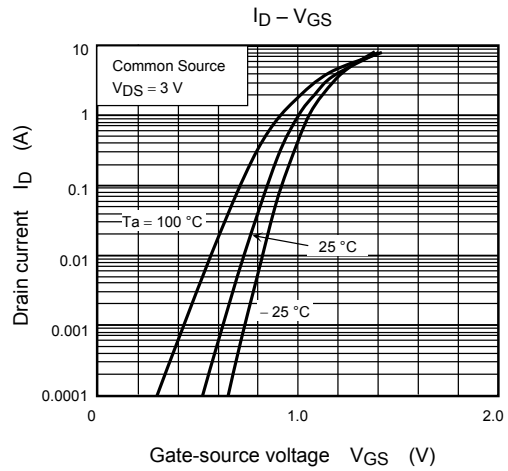
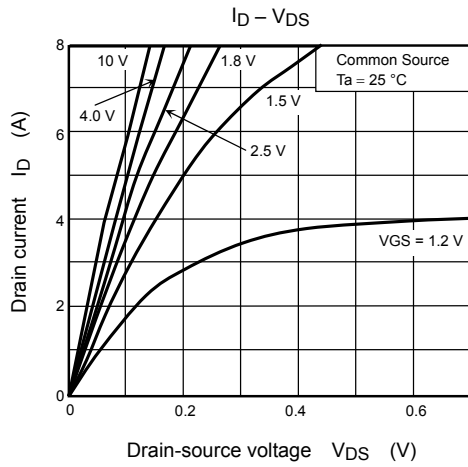
## Notice on Usage

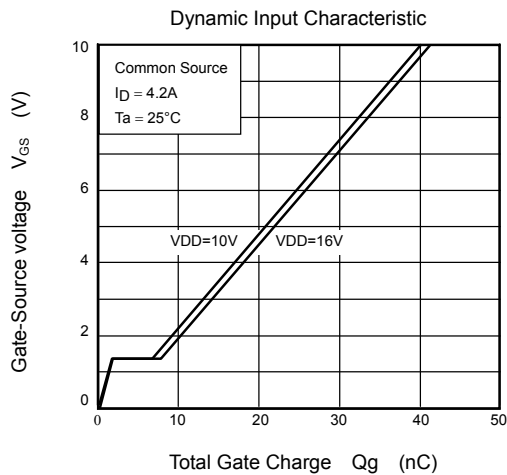
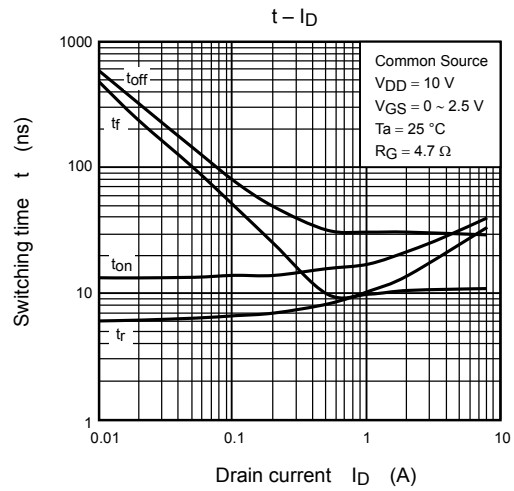
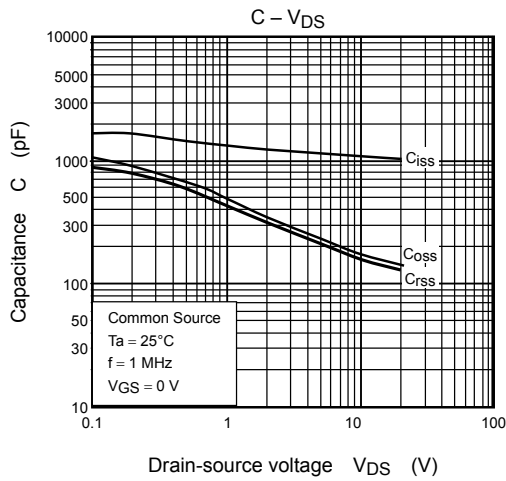
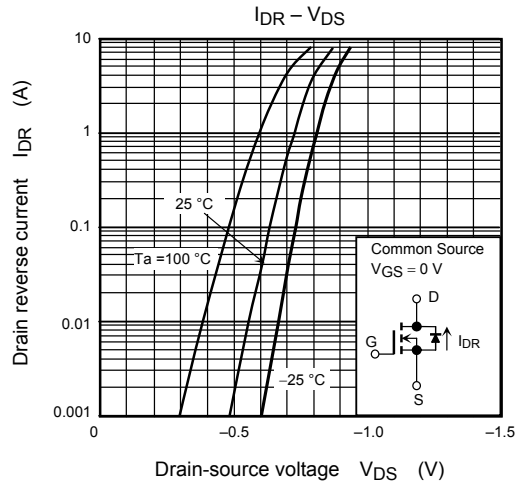
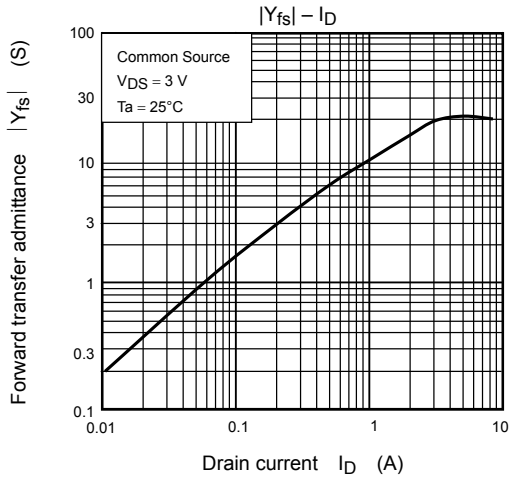
$V_{th}$  can be expressed as the voltage between gate and source when the low operating current value is  $I_D = 1$  mA for this product. For normal switching operation,  $V_{GS(ON)}$  requires a higher voltage than  $V_{th}$  and  $V_{GS(OFF)}$  requires a lower voltage than  $V_{th}$ . (The relationship can be established as follows:  $V_{GS(OFF)} < V_{th} < V_{GS(ON)}$ .)

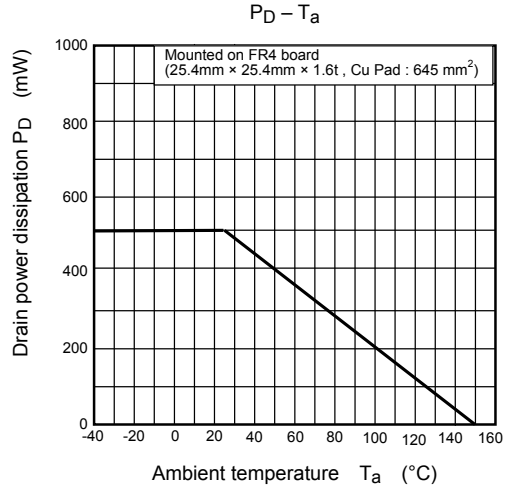
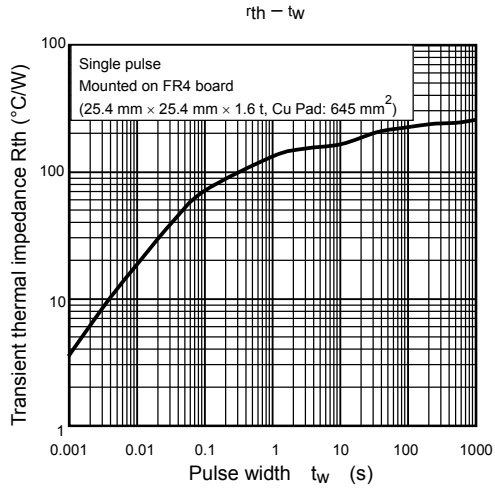
Take this into consideration when using the device.

## Handling Precaution

When handling individual devices that are not yet mounted on a circuit board, make sure that the environment is protected against electrostatic discharge. Operators should wear antistatic clothing, and containers and other objects that come into direct contact with devices should be made of antistatic materials.







**RESTRICTIONS ON PRODUCT USE**

20070701-EN

- The information contained herein is subject to change without notice.
- TOSHIBA is continually working to improve the quality and reliability of its products. Nevertheless, semiconductor devices in general can malfunction or fail due to their inherent electrical sensitivity and vulnerability to physical stress. It is the responsibility of the buyer, when utilizing TOSHIBA products, to comply with the standards of safety in making a safe design for the entire system, and to avoid situations in which a malfunction or failure of such TOSHIBA products could cause loss of human life, bodily injury or damage to property.  
In developing your designs, please ensure that TOSHIBA products are used within specified operating ranges as set forth in the most recent TOSHIBA products specifications. Also, please keep in mind the precautions and conditions set forth in the "Handling Guide for Semiconductor Devices," or "TOSHIBA Semiconductor Reliability Handbook" etc.
- The TOSHIBA products listed in this document are intended for usage in general electronics applications (computer, personal equipment, office equipment, measuring equipment, industrial robotics, domestic appliances, etc.). These TOSHIBA products are neither intended nor warranted for usage in equipment that requires extraordinarily high quality and/or reliability or a malfunction or failure of which may cause loss of human life or bodily injury ("Unintended Usage"). Unintended Usage include atomic energy control instruments, airplane or spaceship instruments, transportation instruments, traffic signal instruments, combustion control instruments, medical instruments, all types of safety devices, etc.. Unintended Usage of TOSHIBA products listed in his document shall be made at the customer's own risk.
- The products described in this document shall not be used or embedded to any downstream products of which manufacture, use and/or sale are prohibited under any applicable laws and regulations.
- Please contact your sales representative for product-by-product details in this document regarding RoHS compatibility. Please use these products in this document in compliance with all applicable laws and regulations that regulate the inclusion or use of controlled substances. Toshiba assumes no liability for damage or losses occurring as a result of noncompliance with applicable laws and regulations.