

# “K\_HV” & “KE\_HV” SERIES - PTFE Dielectric Trimmer Capacitors

FIG. 1

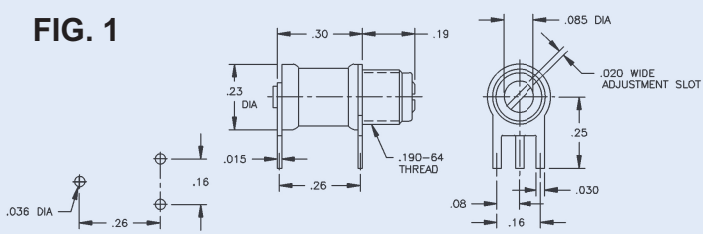


FIG. 1

Part Number		DC Working Voltage	DC Withstanding Voltage	Capacitance (pF)	
“K” Series	“KE” Series			From Below	To Above
KP1HV		1000	2000	0.2	1
KP1SD		250	500	0.2	1
KP4HV	KEP4HV	1000	2000	0.5	4
KP4SD	KEP4SD	250	500	0.5	4
KP10HV	KEP10HV	1000	2000	1.0	6
KP15HV		750	1500	1.0	15

FIG. 2

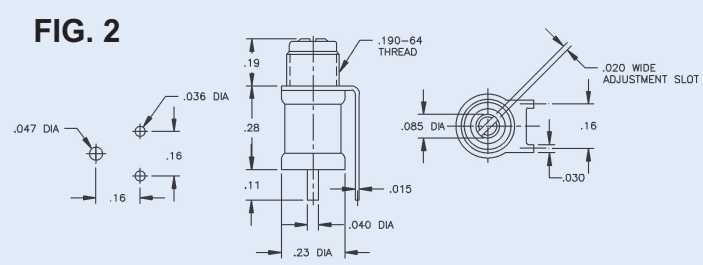


FIG. 2

KF4HV	KEF4HV	1000	2000	0.5	4
KF4SD	KEF4SD	250	500	0.5	4
KF10HV	KEF10HV	1000	2000	1.0	9
KF15HV		750	1500	1.0	15

FIG. 3

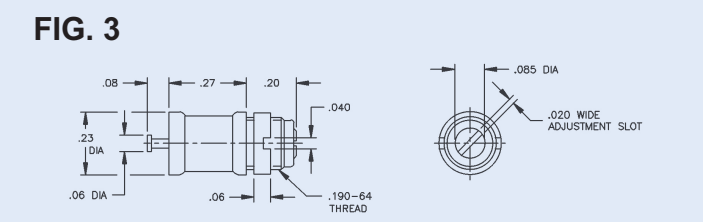


FIG. 3

KT1HV		1000	2000	0.2	1
KT1SD		250	500	0.2	1
KT4HV	KET4HV	1000	2000	0.5	4
KT4SD	KET4SD	250	500	0.5	4
KT10HV	KET10HV	1000	2000	1.0	9
KT15HV		750	1500	1.0	15

FIG. 4

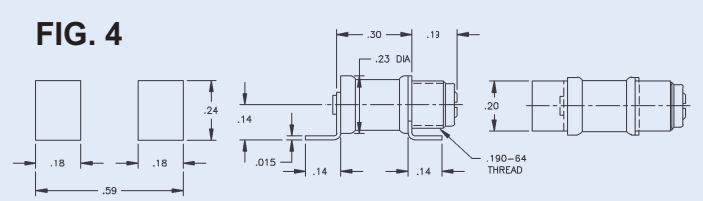


FIG. 4

KJ1HV		1000	2000	0.2	1
KJ1SD		250	500	0.2	1
KJ4HV	KEJ4HV	1000	2000	0.5	4
KJ4SD	KEJ4SD	250	500	0.5	4
KJ10HV	KEJ10HV	1000	2000	1.0	9
KJ15HV		750	1500	1.0	15

FIG. 5

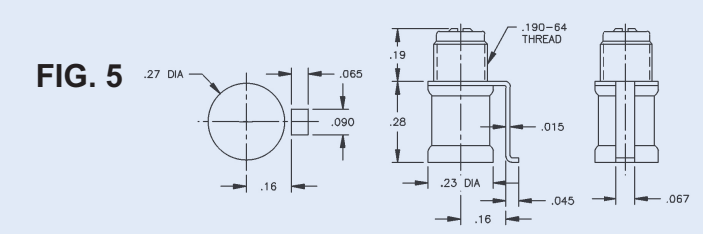
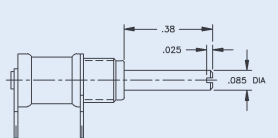


FIG. 5

KM4HV	KEM4HV	1000	2000	0.5	4
KM4SD	KEM4SD	250	500	0.5	4
KM10HV	KEM10HV	1000	2000	1.0	9
KM15HV		750	1500	1.0	15

NOTE: All brushing threads are .190”-64  
Recommended Tuning Tool: TT-100 or TT-500

**EXTENDED METAL SHAFT**



**EXTENDED SHAFT OPTION**  
Extended Metal Shaft: Add “E” to Part Number, i.e., KP10HVE

IN	0.015	0.025	0.030	0.036	0.040	0.045	0.060	0.067	0.080	0.085	0.093	0.110	0.140	0.150	0.160	0.190	0.200	0.230	0.250	0.264	0.270	0.280
MM	0.38	0.63	0.76	0.91	1.02	1.14	1.52	1.70	2.03	2.16	2.36	2.79	3.56	3.81	4.06	4.83	5.08	5.84	6.35	6.71	6.86	7.11
IN	0.290	0.300	0.380	0.470																		
MM	7.37	7.62	9.65	11.94																		