

TOSHIBA Bipolar Linear Integrated Circuit Silicon Monolithic

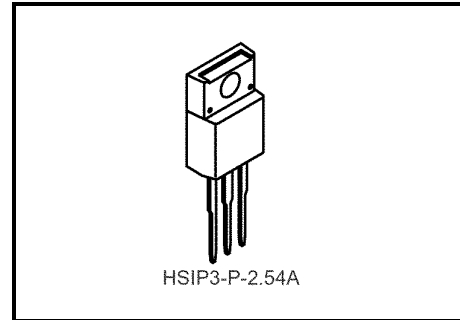
TA78033AS, TA7804AS, TA7805AS, TA7807AS, TA7808AS, TA7809AS

1 A Three-Terminal Positive Voltage Regulator

The TA78***AS series consists of fixed-positive-output voltage regulator ICs capable of sourcing current of up to 1A.

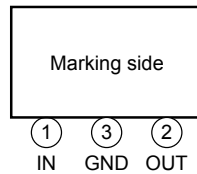
Features

- Maximum output current: 1 A
- Output voltage: 3.3 / 4.0 / 5.0 / 7.0 / 8.0 / 9.0 V
- Output voltage accuracy: $V_{OUT} \pm 4\%$ ($T_j = 25^\circ\text{C}$)
- Protection function: over current protection /thermal shutdown /safe operating area(SOA)
- Package type: TO-220NIS

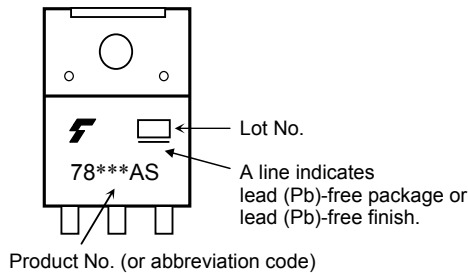


Weight : 1.7 g (typ.)

Pin Assignment



Marking



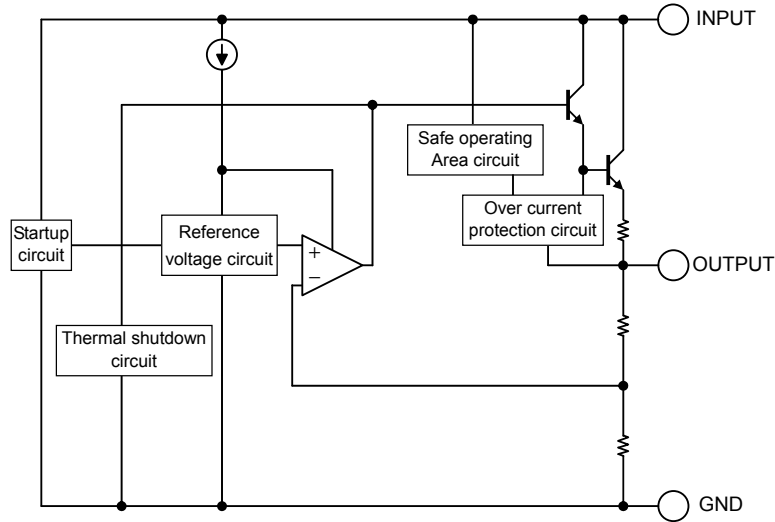
Note: The "***" in the each product number is replaces with the output voltage of each product.

How to Order(Note1)

	Product No.	Package	Packing Type and Unit for Orders
(1)	TA78***AS(Q)	TO-220NIS	Loose in bag: 50 (1 bag)

Note 1: The "***" in each pro-forma product number is replaced with the output voltage of each product.

Block Diagram



Absolute Maximum Ratings (Ta = 25°C) (Note2)

Characteristic	Symbol	Rating	Unit
Input voltage	V_{IN}	20	V
Output current	I_{OUT}	1	A
Operating Junction temperature	$T_{j(opr)}$	-40~135	°C
Junction temperature	T_j	150	°C
Storage temperature	T_{stg}	-55~150	°C
Power dissipation	$T_a = 25^\circ\text{C}$	P_D	W
	$T_c = 25^\circ\text{C}$		

Note 2: Do not apply current and voltage (including reverse polarity) to any pin that is not specified.

Note 3: Using continuously under heavy loads (e.g. the application of high temperature/current/voltage and the significant change in temperature, etc.) may cause this product to decrease in the reliability significantly even if the operating conditions (i.e. operating temperature/current/voltage, etc.) are within the absolute maximum ratings and the operating ranges.

Please design the appropriate reliability upon reviewing the Toshiba Semiconductor Reliability Handbook ("Handling Precautions"/Derating Concept and Methods) and individual reliability data (i.e. reliability test report and estimated failure rate, etc).

Thermal characteristics

Characteristic	Symbol	Max	Unit
Thermal resistance, junction to ambient	$R_{th(j-a)}$	62.5	°C / W
Thermal resistance, junction to case	$R_{th(j-c)}$	8.33	°C / W

Protection Function (reference) (Note3)

Characteristics	Symbol	Test Condition	Min	Typ.	Max	Unit
Thermal shutdown	T_{SD}	$V_{IN} = V_{OUT} + 5\text{ V}$	—	175	—	°C
Peak circuit current	I_{PEAK}	$V_{IN} = V_{OUT} + 5\text{ V}, T_j = 25^\circ\text{C}$	—	1.7	—	A
Short circuit current	I_{SC}	$V_{IN} = V_{OUT} + 5\text{ V}, T_j = 25^\circ\text{C}$	—	1.5	—	A

Note 3: Ensure that the devices operate within the limits of the maximum rating when in actual use.

TA78033AS

Electrical Characteristics

($C_{IN} = 0.33 \mu F$, $C_{OUT} = 0.1 \mu F$, $T_j = 25^\circ C$, unless otherwise specified)

Characteristics	Symbol	Test Conditions	Min	Typ.	Max	Unit
Output voltage	V_{OUT}	$V_{IN} = 8.3 V$, $I_{OUT} = 100 mA$	3.168	3.300	3.432	V
		$5.8V \leq V_{IN} \leq 16 V$, $5 mA \leq I_{OUT} \leq 1 A$	3.135	3.300	3.465	
Line regulation	Reg·line	$5.8 V \leq V_{IN} \leq 16 V$, $I_{OUT} = 500 mA$	—	5	50	mV
Load regulation	Reg·load	$V_{IN} = 8.3 V$, $5 mA \leq I_{OUT} \leq 1 A$	—	5	50	mV
Quiescent current	I_B	$V_{IN} = 8.3 V$, $I_{OUT} = 5 mA$,	—	3	8	mA
Quiescent current change	ΔI_B	$5.8 V \leq V_{IN} \leq 16 V$, $I_{OUT} = 5 mA$	—	—	1.3	mA
Output noise voltage	V_{NO}	$V_{IN} = 8.3 V$, $I_{OUT} = 50 mA$ $10 Hz \leq f \leq 100 kHz$	—	50	—	μV_{rms}
Ripple rejection	R.R.	$6.3 V \leq V_{IN} \leq 16 V$, $I_{OUT} = 50 mA$ $f = 120 Hz$	—	67	—	dB
Dropout voltage	V_D	$I_{OUT} = 1 A$	—	2	—	V
Average temperature coefficient of output voltage	T_{CVO}	$V_{IN} = 8.3 V$, $I_{OUT} = 5 mA$, $0^\circ C \leq T_j \leq 125^\circ C$	—	± 0.33	—	mV/ $^\circ C$

TA7804AS

Electrical Characteristics

($C_{IN} = 0.33 \mu F$, $C_{OUT} = 0.1 \mu F$, $T_j = 25^\circ C$, unless otherwise specified)

Characteristics	Symbol	Test Conditions	Min	Typ.	Max	Unit
Output voltage	V_{OUT}	$V_{IN} = 9 V$, $I_{OUT} = 100 mA$	3.84	4.00	4.16	V
		$6.5 V \leq V_{IN} \leq 16 V$, $5 mA \leq I_{OUT} \leq 1 A$,	3.8	4.0	4.2	
Line regulation	Reg·line	$6.5 V \leq V_{IN} \leq 16 V$, $I_{OUT} = 500 A$	—	10	50	mV
Load regulation	Reg·load	$V_{IN} = 9 V$, $5 mA \leq I_{OUT} \leq 1 A$	—	10	50	mV
Quiescent current	I_B	$V_{IN} = 9 V$, $I_{OUT} = 5 mA$,	—	3	8	mA
Quiescent current change	ΔI_B	$6.5 V \leq V_{IN} \leq 16 V$, $I_{OUT} = 5 mA$	—	—	1.3	mA
Output noise voltage	V_{NO}	$V_{IN} = 9 V$, $I_{OUT} = 50 mA$ $10 Hz \leq f \leq 100 kHz$	—	50	—	μV_{rms}
Ripple rejection	R.R.	$7 V \leq V_{IN} \leq 16 V$, $I_{OUT} = 50 mA$ $f = 120 Hz$	—	66	—	dB
Dropout voltage	V_D	$I_{OUT} = 1 A$	—	2	—	V
Average temperature coefficient of output voltage	T_{CVO}	$V_{IN} = 9 V$, $I_{OUT} = 5 mA$, $0^\circ C \leq T_j \leq 125^\circ C$	—	± 0.4	—	mV/ $^\circ C$

TA7805AS

Electrical Characteristics

($C_{IN} = 0.33 \mu\text{F}$, $C_{OUT} = 0.1 \mu\text{F}$, $T_j = 25^\circ\text{C}$, unless otherwise specified)

Characteristics	Symbol	Test Conditions	Min	Typ.	Max	Unit
Output voltage	V_{OUT}	$V_{IN} = 10 \text{ V}$, $I_{OUT} = 100 \text{ mA}$	4.8	5.0	5.2	V
		$7.5 \text{ V} \leq V_{IN} \leq 16 \text{ V}$, $5 \text{ mA} \leq I_{OUT} \leq 1 \text{ A}$,	4.75	5.00	5.25	
Line regulation	Reg·line	$7.5 \text{ V} \leq V_{IN} \leq 16 \text{ V}$, $I_{OUT} = 500 \text{ mA}$	—	10	50	mV
Load regulation	Reg·load	$V_{IN} = 10 \text{ V}$, $5 \text{ mA} \leq I_{OUT} \leq 1 \text{ A}$	—	10	50	mV
Quiescent current	I_B	$V_{IN} = 10 \text{ V}$, $I_{OUT} = 5 \text{ mA}$,	—	3	8	mA
Quiescent current change	ΔI_B	$7.5 \text{ V} \leq V_{IN} \leq 16 \text{ V}$, $I_{OUT} = 5 \text{ mA}$	—	—	1.3	mA
Output noise voltage	V_{NO}	$V_{IN} = 10 \text{ V}$, $I_{OUT} = 50 \text{ mA}$ $10 \text{ Hz} \leq f \leq 100 \text{ kHz}$	—	50	—	μVrms
Ripple rejection	R.R.	$8 \text{ V} \leq V_{IN} \leq 16 \text{ V}$, $I_{OUT} = 50 \text{ mA}$ $f = 120 \text{ Hz}$	—	64	—	dB
Dropout voltage	V_D	$I_{OUT} = 1 \text{ A}$	—	2	—	V
Average temperature coefficient of output voltage	T_{CVO}	$V_{IN} = 10 \text{ V}$, $I_{OUT} = 5 \text{ mA}$, $0^\circ\text{C} \leq T_j \leq 125^\circ\text{C}$	—	± 0.5	—	$\text{mV}/^\circ\text{C}$

TA7807AS

Electrical Characteristics

($C_{IN} = 0.33 \mu\text{F}$, $C_{OUT} = 0.1 \mu\text{F}$, $T_j = 25^\circ\text{C}$, unless otherwise specified)

Characteristics	Symbol	Test Conditions	Min	Typ.	Max	Unit
Output voltage	V_{OUT}	$V_{IN} = 12 \text{ V}$, $I_{OUT} = 100 \text{ mA}$	6.72	7.00	7.28	V
		$9.5 \text{ V} \leq V_{IN} \leq 16 \text{ V}$, $5 \text{ mA} \leq I_{OUT} \leq 1 \text{ A}$,	6.65	7.00	7.35	
Line regulation	Reg·line	$9.5 \text{ V} \leq V_{IN} \leq 16 \text{ V}$, $I_{OUT} = 500 \text{ mA}$	—	15	50	mV
Load regulation	Reg·load	$V_{IN} = 12 \text{ V}$, $5 \text{ mA} \leq I_{OUT} \leq 1 \text{ A}$	—	15	50	mV
Quiescent current	I_B	$V_{IN} = 12 \text{ V}$, $I_{OUT} = 5 \text{ mA}$,	—	3	8	mA
Quiescent current change	ΔI_B	$9.5 \text{ V} \leq V_{IN} \leq 16 \text{ V}$, $I_{OUT} = 5 \text{ mA}$	—	—	1.3	mA
Output noise voltage	V_{NO}	$V_{IN} = 12 \text{ V}$, $I_{OUT} = 50 \text{ mA}$ $10 \text{ Hz} \leq f \leq 100 \text{ kHz}$	—	60	—	μVrms
Ripple rejection	R.R.	$10 \text{ V} \leq V_{IN} \leq 16 \text{ V}$, $I_{OUT} = 50 \text{ mA}$ $f = 120 \text{ Hz}$	—	60	—	dB
Dropout voltage	V_D	$I_{OUT} = 1 \text{ A}$	—	2	—	V
Average temperature coefficient of output voltage	T_{CVO}	$V_{IN} = 12 \text{ V}$, $I_{OUT} = 5 \text{ mA}$, $0^\circ\text{C} \leq T_j \leq 125^\circ\text{C}$	—	± 0.7	—	$\text{mV}/^\circ\text{C}$

TA7808AS

Electrical Characteristics

($C_{IN} = 0.33 \mu\text{F}$, $C_{OUT} = 0.1 \mu\text{F}$, $T_j = 25^\circ\text{C}$, unless otherwise specified)

Characteristics	Symbol	Test Conditions	Min	Typ.	Max	Unit
Output voltage	V_{OUT}	$V_{IN} = 13 \text{ V}$, $I_{OUT} = 100 \text{ mA}$	7.68	8.00	8.32	V
		$10.5 \text{ V} \leq V_{IN} \leq 16 \text{ V}$, $5 \text{ mA} \leq I_{OUT} \leq 1 \text{ A}$,	7.6	8.0	8.4	
Line regulation	Reg·line	$10.5 \text{ V} \leq V_{IN} \leq 16 \text{ V}$, $I_{OUT} = 500 \text{ mA}$	—	15	50	mV
Load regulation	Reg·load	$V_{IN} = 13 \text{ V}$, $5 \text{ mA} \leq I_{OUT} \leq 1 \text{ A}$	—	15	50	mV
Quiescent current	I_B	$V_{IN} = 13 \text{ V}$, $I_{OUT} = 5 \text{ mA}$,	—	3	8	mA
Quiescent current change	ΔI_B	$10.5 \text{ V} \leq V_{IN} \leq 16 \text{ V}$, $I_{OUT} = 5 \text{ mA}$	—	—	1.3	mA
Output noise voltage	V_{NO}	$V_{IN} = 13 \text{ V}$, $I_{OUT} = 50 \text{ mA}$ $10 \text{ Hz} \leq f \leq 100 \text{ kHz}$	—	70	—	μVrms
Ripple rejection	R.R.	$11 \text{ V} \leq V_{IN} \leq 16 \text{ V}$, $I_{OUT} = 50 \text{ mA}$ $f = 120 \text{ Hz}$	—	60	—	dB
Dropout voltage	V_D	$I_{OUT} = 1 \text{ A}$	—	2	—	V
Average temperature coefficient of output voltage	T_{CVO}	$V_{IN} = 13 \text{ V}$, $I_{OUT} = 5 \text{ mA}$, $0^\circ\text{C} \leq T_j \leq 125^\circ\text{C}$	—	± 0.8	—	$\text{mV}/^\circ\text{C}$

TA7809AS

Electrical Characteristics

($C_{IN} = 0.33 \mu\text{F}$, $C_{OUT} = 0.1 \mu\text{F}$, $T_j = 25^\circ\text{C}$, unless otherwise specified)

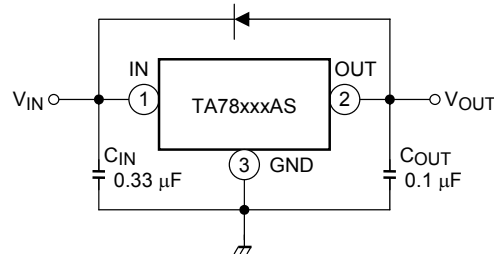
Characteristics	Symbol	Test Conditions	Min	Typ.	Max	Unit
Output voltage	V_{OUT}	$V_{IN} = 14 \text{ V}$, $I_{OUT} = 100 \text{ mA}$	8.64	9.00	9.36	V
		$11.5 \text{ V} \leq V_{IN} \leq 16 \text{ V}$, $5 \text{ mA} \leq I_{OUT} \leq 1 \text{ A}$,	8.55	9.00	9.45	
Line regulation	Reg·line	$11.5 \text{ V} \leq V_{IN} \leq 16 \text{ V}$, $I_{OUT} = 500 \text{ mA}$	—	15	50	mV
Load regulation	Reg·load	$V_{IN} = 14 \text{ V}$, $5 \text{ mA} \leq I_{OUT} \leq 1 \text{ A}$	—	15	50	mV
Quiescent current	I_B	$V_{IN} = 14 \text{ V}$, $I_{OUT} = 5 \text{ mA}$,	—	3	8	mA
Quiescent current change	ΔI_B	$11.5 \text{ V} \leq V_{IN} \leq 16 \text{ V}$, $I_{OUT} = 5 \text{ mA}$	—	—	1.3	mA
Output noise voltage	V_{NO}	$V_{IN} = 14 \text{ V}$, $I_{OUT} = 50 \text{ mA}$ $10 \text{ Hz} \leq f \leq 100 \text{ kHz}$	—	75	—	μVrms
Ripple rejection	R.R.	$12 \text{ V} \leq V_{IN} \leq 16 \text{ V}$, $I_{OUT} = 50 \text{ mA}$ $f = 120 \text{ Hz}$	—	60	—	dB
Dropout voltage	V_D	$I_{OUT} = 1 \text{ A}$	—	2	—	V
Average temperature coefficient of output voltage	T_{CVO}	$V_{IN} = 14 \text{ V}$, $I_{OUT} = 5 \text{ mA}$, $0^\circ\text{C} \leq T_j \leq 125^\circ\text{C}$	—	± 0.9	—	$\text{mV}/^\circ\text{C}$

Electrical Characteristics for All Products

Generally, the characteristics of power supply ICs vary with temperature.

The ratings at $T_j = 25^\circ\text{C}$ assume that a temperature increase has no effect on IC characteristics as ascertained by pulse tests.

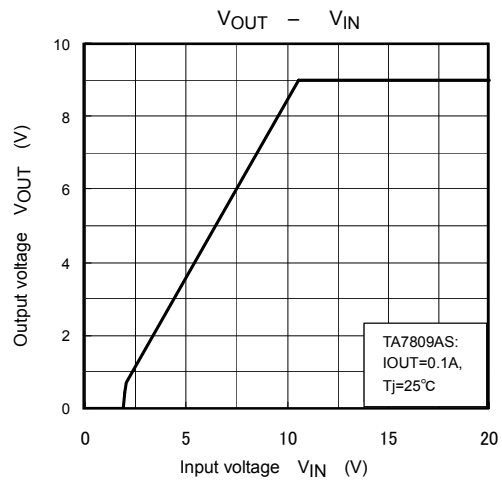
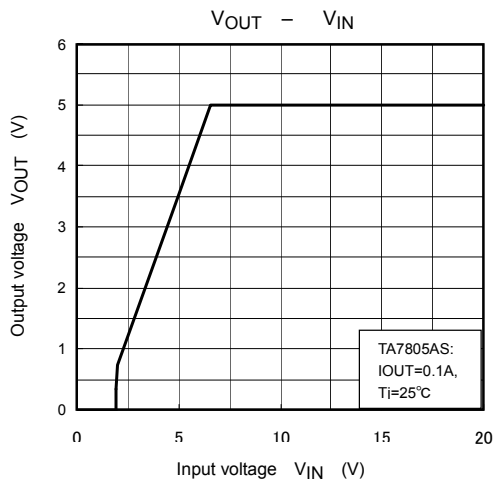
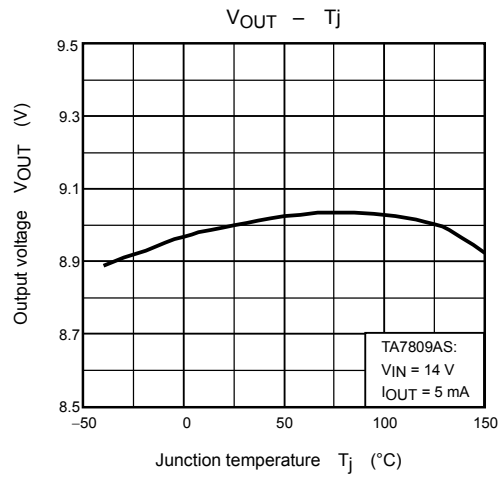
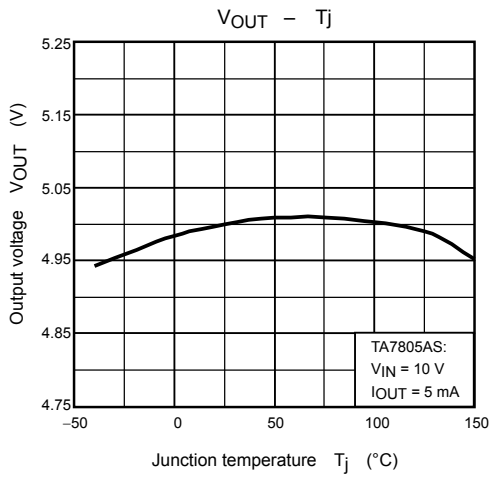
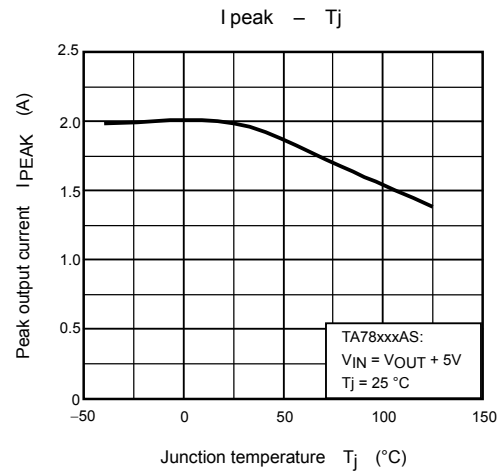
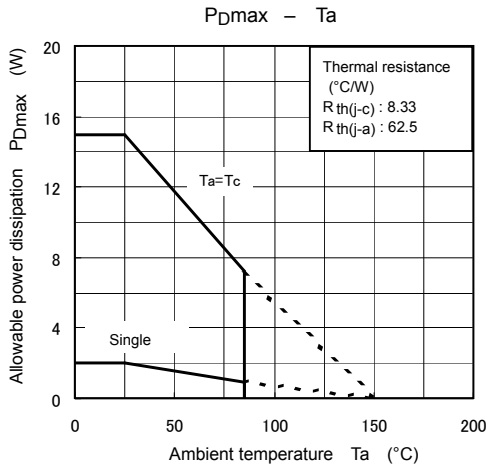
Standard Application Circuit

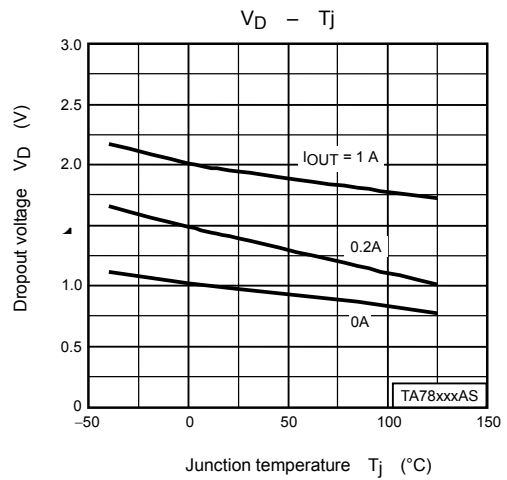
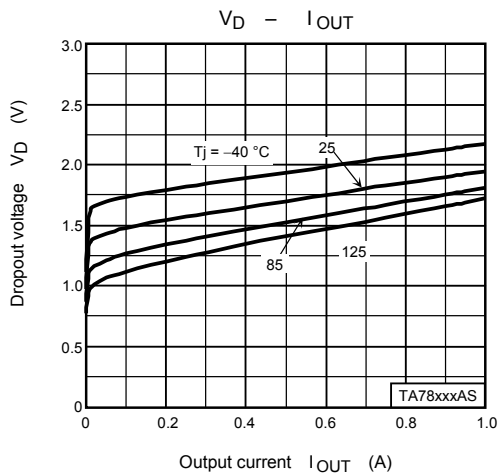
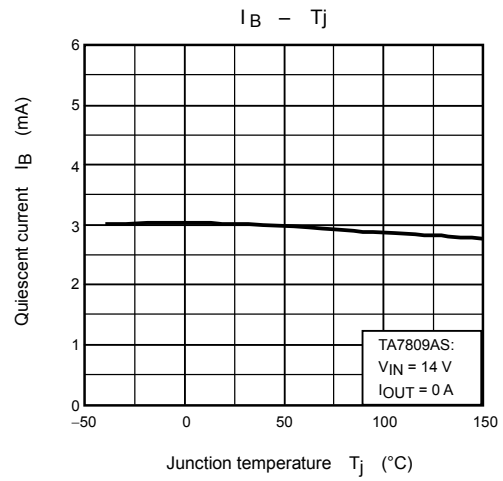
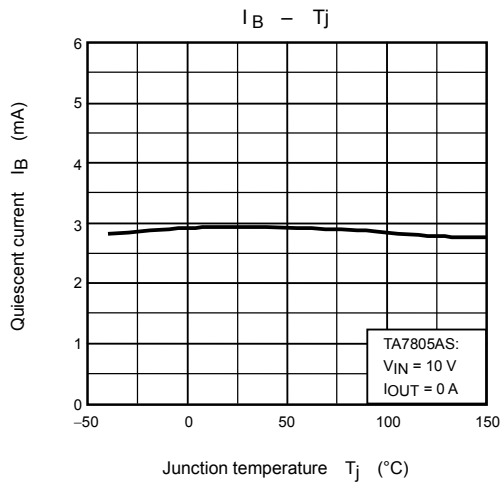
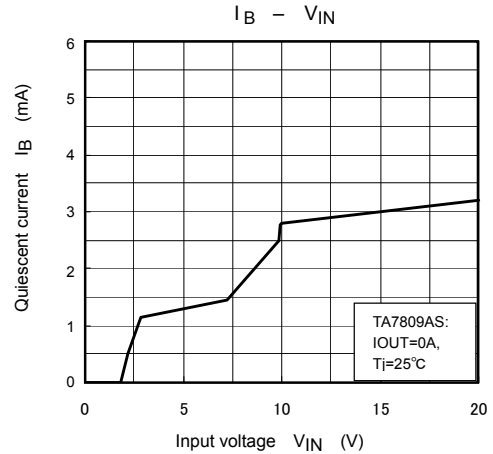
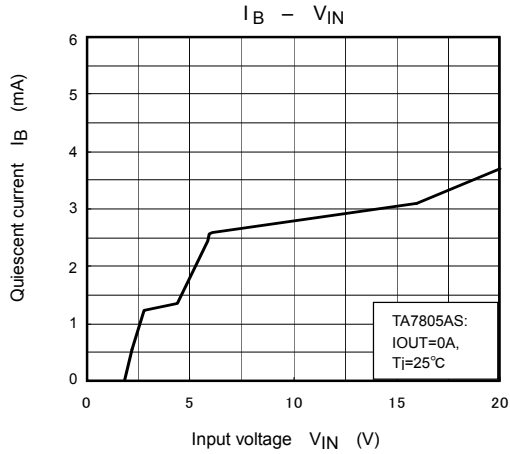


- Place C_{IN} as close as possible to the input terminal and GND. Place C_{OUT} as close as possible to the output terminal and GND. Although capacitor C_{OUT} acts to smooth the dc output voltage during suspension of output oscillation or load change, it might cause output oscillation in a cold environment due to increased capacitor ESR. It is therefore recommended to use a capacitor with small variations temperature sensitivity. The IC may oscillate due to external conditions (output current, temperature, or the type of the capacitor used). The type of capacitor required must be determined by the actual application circuit in which the IC is used.

The notice in case of application

- If the input terminal shorts to GND in a state of normal operation, the output terminal voltage becomes higher than the input voltage (GND potential), and the electric charge of a chemical capacitor connected to the output terminal flows into the input side, which may cause the destruction of circuit. In these cases, take such steps as a zener diode and a general silicon diode are connected to the circuit, as shown in the above figure.
- There is a possibility that internal parasitic devices may be generated when momentary transients cause a terminal's potential to fall below that of the GND terminal. In such case, that the device could be destroyed. The voltage of each terminal and any state must therefore never fall below the GND potential.

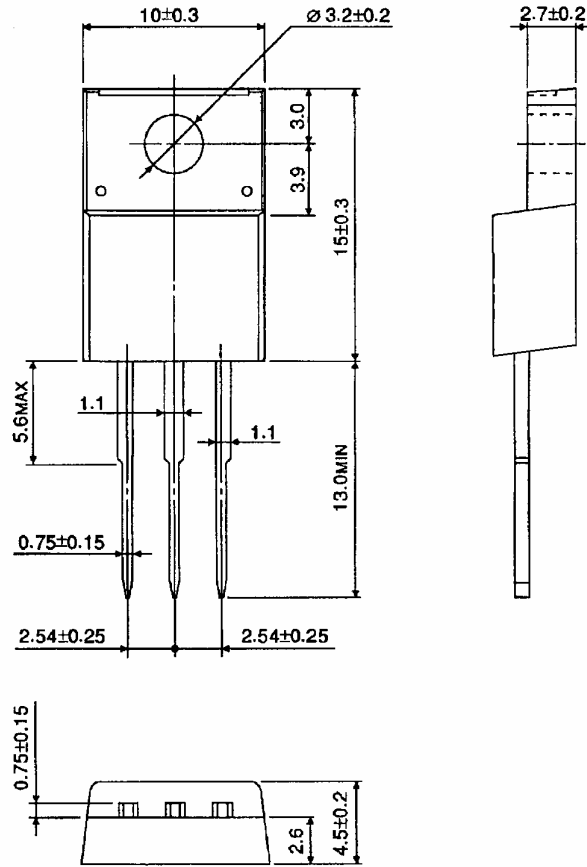




Package Dimensions

HSIP3-P-2.54A

Unit : mm



Weight: 1.7 g (typ.)

RESTRICTIONS ON PRODUCT USE

20070701-EN

- The information contained herein is subject to change without notice.
- TOSHIBA is continually working to improve the quality and reliability of its products. Nevertheless, semiconductor devices in general can malfunction or fail due to their inherent electrical sensitivity and vulnerability to physical stress. It is the responsibility of the buyer, when utilizing TOSHIBA products, to comply with the standards of safety in making a safe design for the entire system, and to avoid situations in which a malfunction or failure of such TOSHIBA products could cause loss of human life, bodily injury or damage to property.
In developing your designs, please ensure that TOSHIBA products are used within specified operating ranges as set forth in the most recent TOSHIBA products specifications. Also, please keep in mind the precautions and conditions set forth in the "Handling Guide for Semiconductor Devices," or "TOSHIBA Semiconductor Reliability Handbook" etc.
- The TOSHIBA products listed in this document are intended for usage in general electronics applications (computer, personal equipment, office equipment, measuring equipment, industrial robotics, domestic appliances, etc.). These TOSHIBA products are neither intended nor warranted for usage in equipment that requires extraordinarily high quality and/or reliability or a malfunction or failure of which may cause loss of human life or bodily injury ("Unintended Usage"). Unintended Usage include atomic energy control instruments, airplane or spaceship instruments, transportation instruments, traffic signal instruments, combustion control instruments, medical instruments, all types of safety devices, etc.. Unintended Usage of TOSHIBA products listed in this document shall be made at the customer's own risk.
- The products described in this document shall not be used or embedded to any downstream products of which manufacture, use and/or sale are prohibited under any applicable laws and regulations.
- The information contained herein is presented only as a guide for the applications of our products. No responsibility is assumed by TOSHIBA for any infringements of patents or other rights of the third parties which may result from its use. No license is granted by implication or otherwise under any patents or other rights of TOSHIBA or the third parties.
- Please contact your sales representative for product-by-product details in this document regarding RoHS compatibility. Please use these products in this document in compliance with all applicable laws and regulations that regulate the inclusion or use of controlled substances. Toshiba assumes no liability for damage or losses occurring as a result of noncompliance with applicable laws and regulations.