

Features

- HIGH PERFORMANCE TERMINATION NETWORK
- Miniaturized circuitry and packaging for space reduction
- Designed for gigabit communication networks
- Controlled impedance
- RoHS compliant*

CAT16-PC2F6 - Concave Chip Array

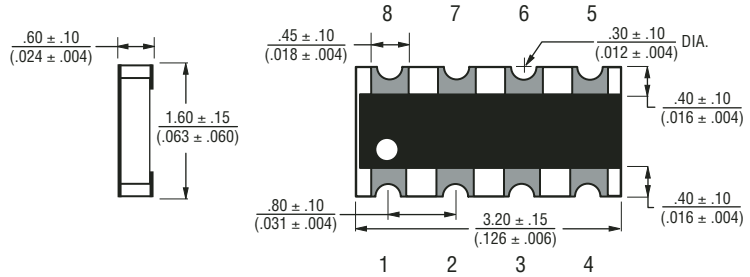
Electrical Characteristics

Resistance

| | |
|------------------------------|-------------------|
| R1 | 100 ohms |
| R2 | 187 ohms |
| Tolerance | ±1 % |
| TCR | ±200 ppm/°C |
| Temperature Range | -55 °C to +125 °C |
| Max. Operating Voltage | 5 VDC |
| Max. Power Resistance | .0625 W |
| Solderability | >95 % Coverage |

For Standard Values Used in Capacitors, Inductors, and Resistors, [click here](#).

Product Dimensions

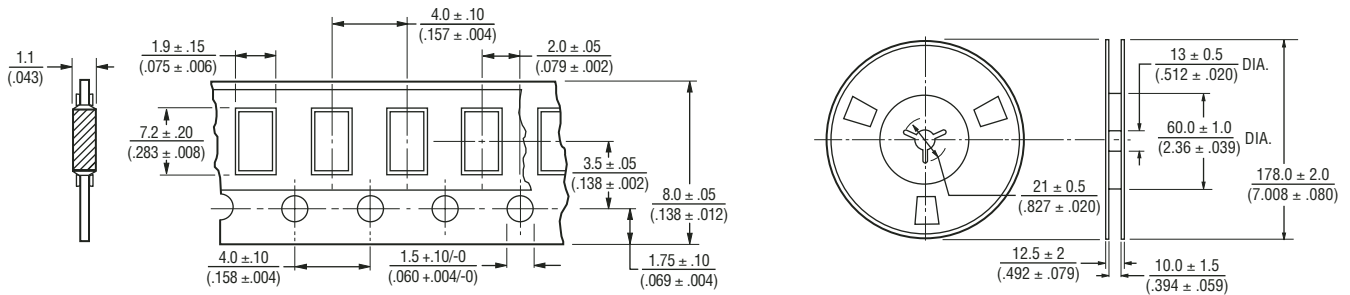


DIMENSIONS ARE: $\frac{\text{MM}}{\text{(INCHES)}}$

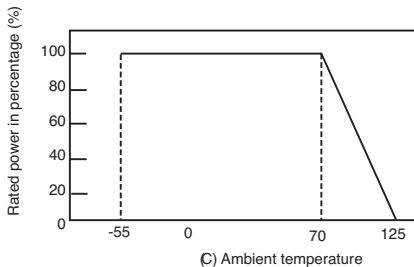


Packaging Specifications

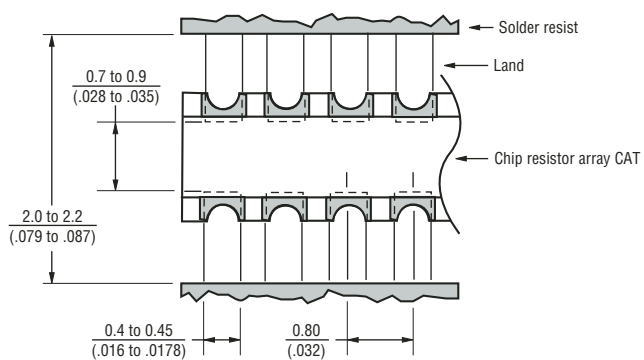
5000 pcs - per 7 " reel



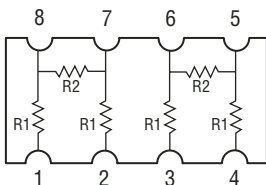
Derating Curve



Land Pattern



Schematic



REV. 05/06

*RoHS Directive 2002/95/EC Jan 27 2003 including Annex. Specifications are subject to change without notice. Customers should verify actual device performance in their specific applications.