



Micro Commercial Components

Micro Commercial Components
20736 Marilla Street Chatsworth
CA 91311
Phone: (818) 701-4933
Fax: (818) 701-4939

TL431BLP

Features

- Lead Free Finish/RoHS Compliant ("P" Suffix designates RoHS Compliant. See ordering information)
- The Reference Input Voltage tolerance is 0.5%
- Sink Current Capability of 0.1mA to 100 mA
- Temperature Compensated for operation over full rated operating temperature range
- Low output noise voltage and Fast turn on response
- Case Material: Molded Plastic. UL Flammability Classification Rating 94V-0 and MSL Rating 1
- Marking Code: TL431

Maximum Ratings

Parameter	Symbol	Value	Unit
Cathode Voltage	V_{KA}	37	V
Cathode Current Range	I_K	-100~150	mA
Reference Input Current Range	I_{REF}	0.05~10	mA
Power Dissipation at 25°C	P_D	0.77	W
Thermal Resistance junction to ambient	$R_{\theta JA}$	178	°C/W
Junction Temperature	T_J	0--150	°C
Operating Temperature	T_g	0---70	°C
Storage Temperature Range	T_{STG}	-65---+150	°C

Recommended Operating Conditions

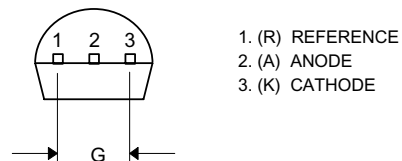
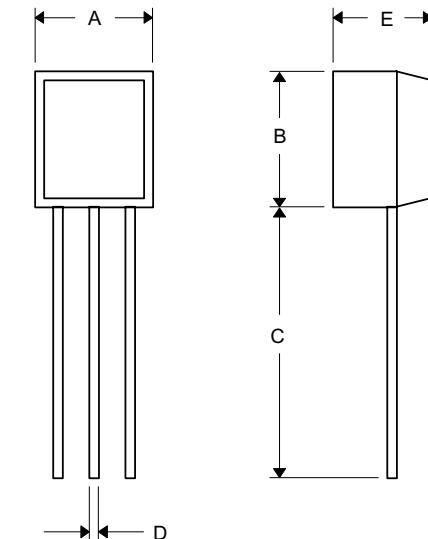
Parameter	Sym	Min	Max	Unit
Cathode Voltage	V_{KA}	V_{REF}	36	V
Cathode Current Range	I_K	1.0	100	mA

Electrical Characteristics @ 25°C Unless Otherwise Specified

Parameter	Sym	Min	Typ	Max	Test conditions
Reference Input Voltage	V_{ref}	2.4875V	2.500V	2.5125V	
Deviation of reference input voltage	$V_{ref(dev)}$		4.5mV	17mV	$T_{min} \leq T_a \leq T_{max}$
Ratio of Change in Reference Input Voltage to the Change in Cathode Voltage	$\frac{\Delta V_{ref}}{\Delta V_{KA}}$		-1.0	-2.7	$\Delta V_{KA}=10V \sim V_{ref}$
Reference Input Current	I_{ref}		1.5µA	4.0µA	$I_{KA}=10mA, R_1=10K\Omega, R_2=\infty$
Deviation of Reference Input Current Over Full Temperature Range	$\frac{\Delta I_{ref}}{\Delta T}$		0.4µA	1.2µA	$I_{KA}=10mA, R_1=10K\Omega, R_2=\infty, T_A=full\ Temperature$
Minimum Cathode Current for Regulation	$I_{KA(min)}$		0.45mA	1.0mA	
Off-State Cathode Current	$I_{KA(off)}$		0.05µA	1.0µA	$V_{KA}=36V, V_{REF}=0V$
Dynamic Impedance	Z_{KA}		0.15Ω	0.5Ω	$I_{KA}=10\ to\ 100mA, f \leq 1.0KHz$

Programmable Precision Regulator

TO-92



1. (R) REFERENCE
2. (A) ANODE
3. (K) CATHODE

DIM	DIMENSIONS				NOTE
	INCHES		MM		
A	.175	.185	4.45	4.70	
B	.175	.185	4.46	4.70	
C	.500	---	12.7	---	
D	.016	.020	0.41	0.63	
E	.135	.145	3.43	3.68	
G	.095	.105	2.42	2.67	

TL431BLP

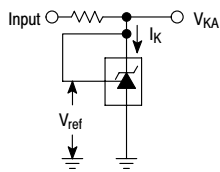


Figure 1. Test Circuit for $V_{KA} = V_{ref}$

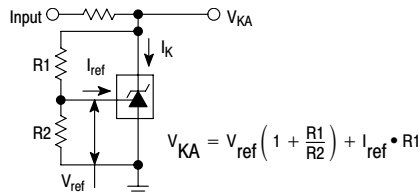


Figure 2. Test Circuit for $V_{KA} > V_{ref}$

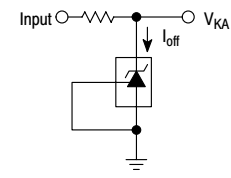


Figure 3. Test Circuit for I_{off}

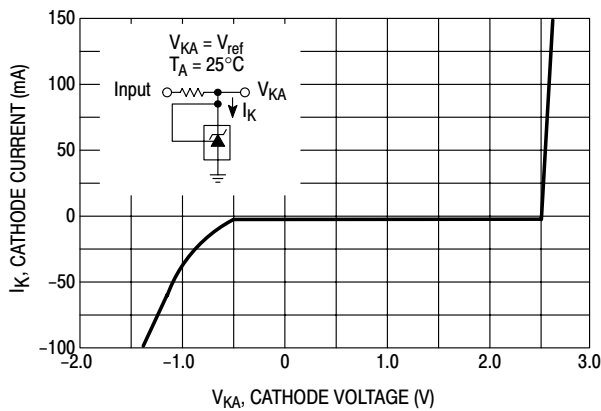


Figure 4. Cathode Current versus Cathode Voltage

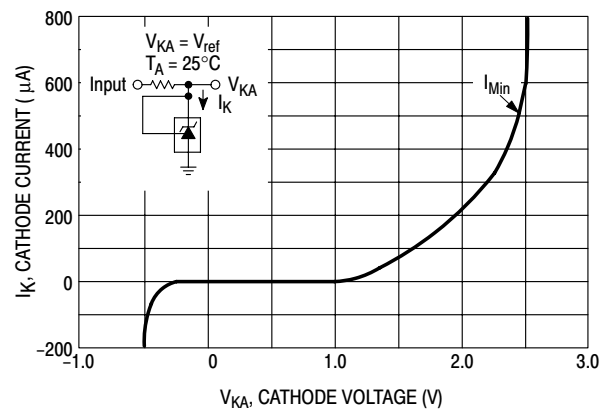


Figure 5. Cathode Current versus Cathode Voltage

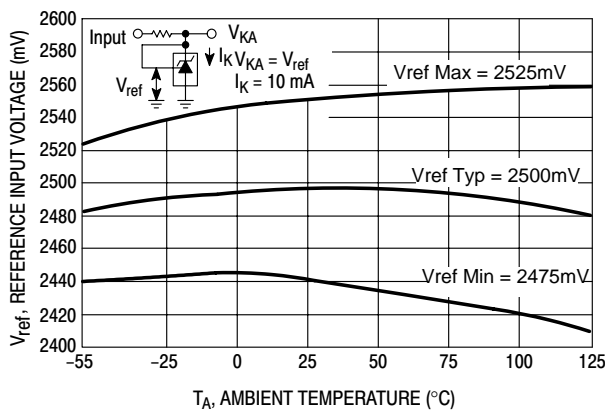


Figure 6. Reference Input Voltage versus Ambient Temperature

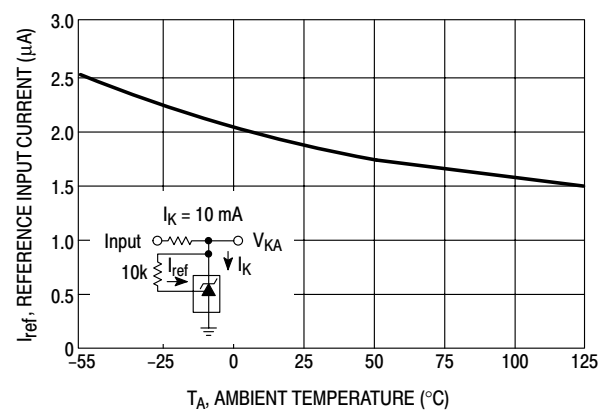


Figure 7. Reference Input Current versus Ambient Temperature

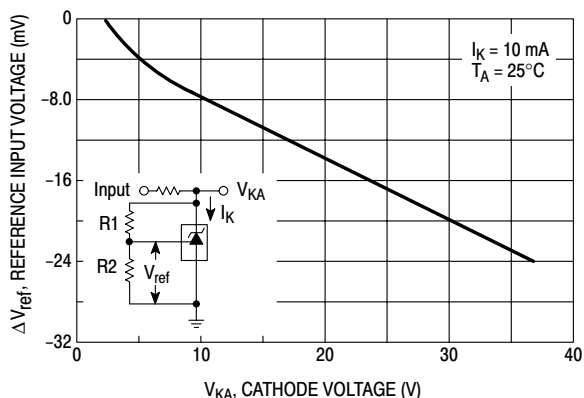


Figure 8. Change in Reference Input Voltage versus Cathode Voltage

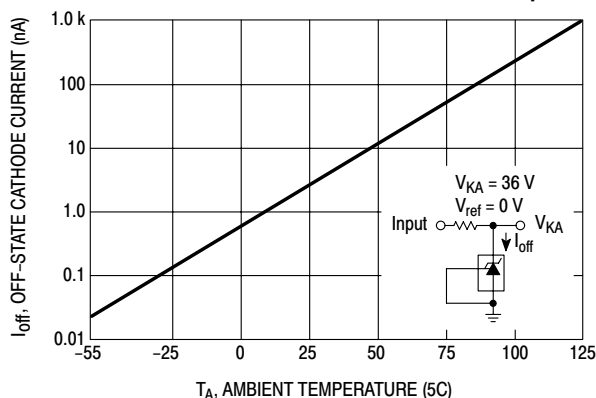


Figure 9. Off-State Cathode Current versus Ambient Temperature

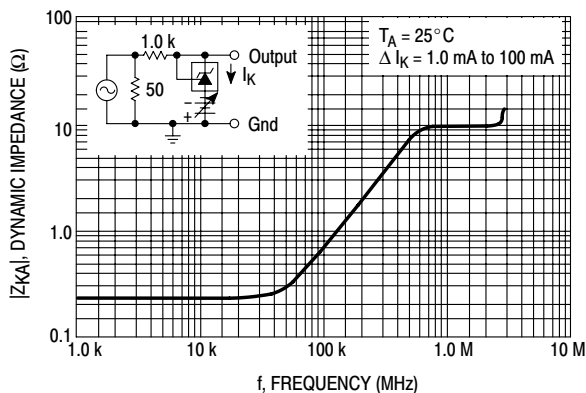


Figure 10. Dynamic Impedance versus Frequency

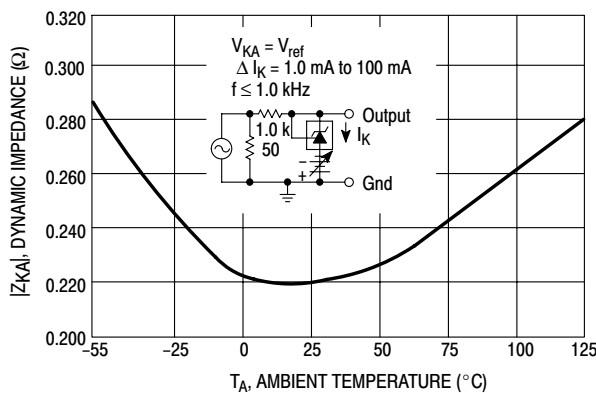


Figure 11. Dynamic Impedance versus Ambient Temperature

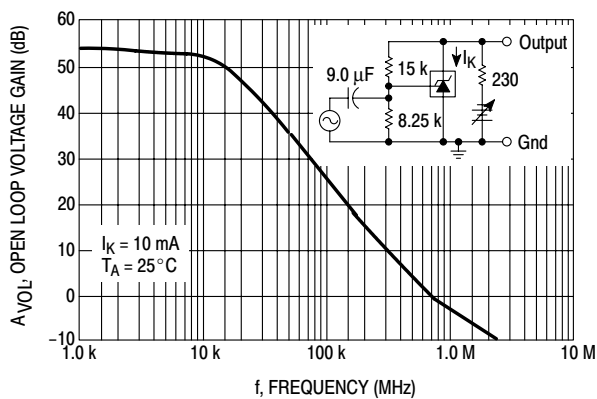


Figure 12. Open-Loop Voltage Gain versus Frequency

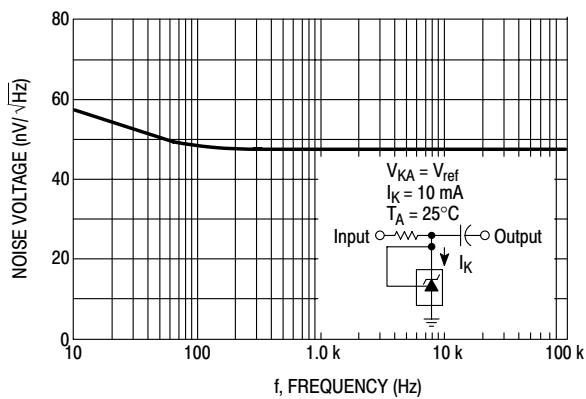


Figure 13. Spectral Noise Density



Micro Commercial Components

Ordering Information

Device	Packing
(Part Number)-AP	Tape&Reel;2Kpcs/Box
(Part Number)-BP	Bulk;1Kpcs/Bag

*****IMPORTANT NOTICE*****

Micro Commercial Components Corp. reserves the right to make changes without further notice to any product herein to make corrections, modifications, enhancements, improvements, or other changes. *Micro Commercial Components Corp.* does not assume any liability arising out of the application or use of any product described herein; neither does it convey any license under its patent rights, nor the rights of others. The user of products in such applications shall assume all risks of such use and will agree to hold *Micro Commercial Components Corp.* and all the companies whose products are represented on our website, harmless against all damages.

*****APPLICATIONS DISCLAIMER*****

Products offer by *Micro Commercial Components Corp.* are not intended for use in Medical, Aerospace or Military Applications.

www.mccsemi.com