

PA1153
Low Noise

1800 -2000 MHz.
Linear Power Amplifier



Features (typical values)

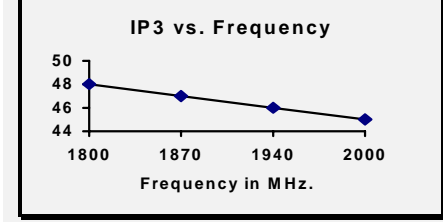
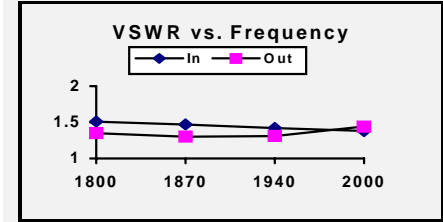
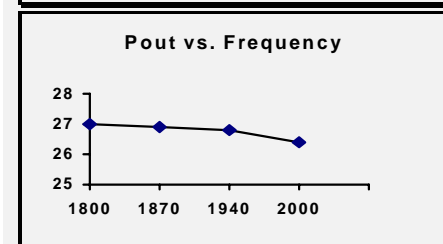
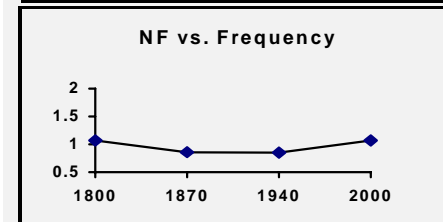
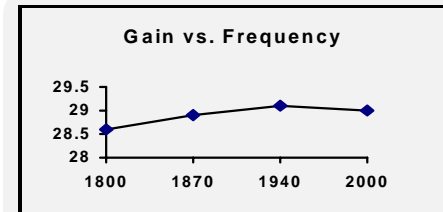
Low Noise **1.0 dB.**
 High IP3 **45 dBm.**
 High Gain **27 dB.**
 Low Cost

Electrical Specifications (Referenced to 50 ohms)

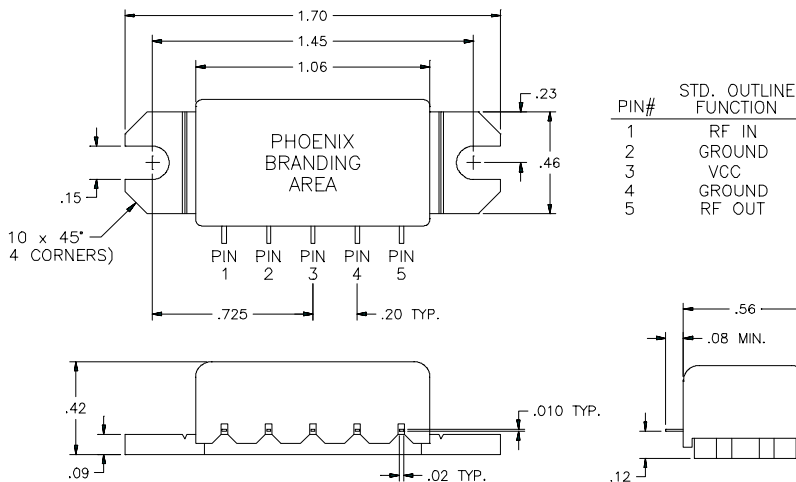
Parameter	Typical Value	Min. Value	Max. Value	Units
Frequency		1800	2000	MHz.
Gain	28.5	27.0		dB.
Gain Flatness	±0.3		±0.5	dB.
Reverse Isolation	40			dB.
Pout @ 1dB. comp.	26.4	25.0		dBm.
Noise Figure	1.0		1.3	dB.
IP3	+45.0	+42.0		dBm.
VSWR	1.5:1		2.0:1	
Supply Req'd	+15/250		+15/300	v./mA.

IP3 measured with 2 tones @+15dBm. per tone spaced 1 MHz. apart
 Min and max values from 0 to 85 degrees C

Typical Performance Curves



Outline Drawings



Maximum Ratings

Storage Temperature -40°C to +125°C
 DC Voltage +17 volts
 RF Input Power +15 dBm.
 Case Temperature +95°C