

INFRARED EMITTER

MTE108CL

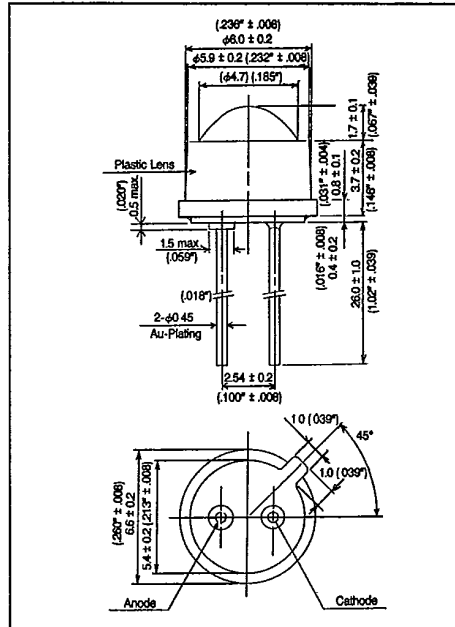
T-41-13

APPLICATIONS

- ROTARY ENCODER (see graph**)
- BAR CODE SCANNING

FEATURES

- TO-46 metal can.
- Plastic lens and cover (optimal for superior light uniformity and output).
- Parts shipped individually to avoid scratching/markings lens.
- Fast switching speeds, capable of pulse operation.
- High power output GaAlAs IR die.



MAXIMUM RATINGS (Ta = 25°C)

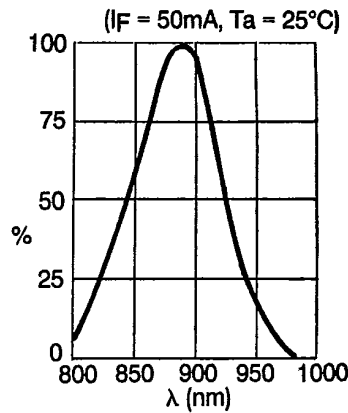
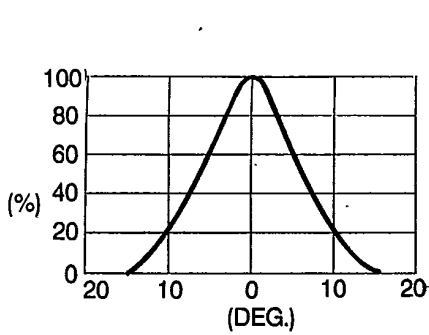
CHARACTERISTIC	SYMBOL	RATING	UNIT
Forward Current	I _F	100	mA
Reverse Voltage	V _R	6	V
Power Dissipation	P _D	180	mW
Peak Pulse Current	I _{FP}	2*	A
Operative Temperature Range	T _{opr}	-25 ~ 80	°C
Storage Temperature Range	T _{stg}	-30 ~ 80	°C

*Iw 10 μs, T = 1mS.

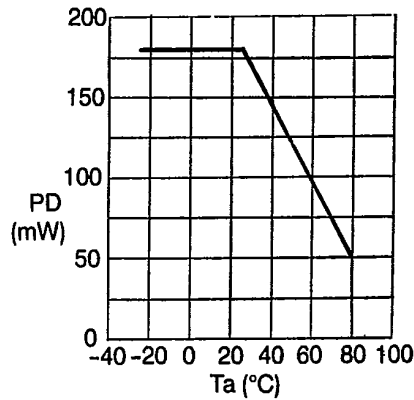
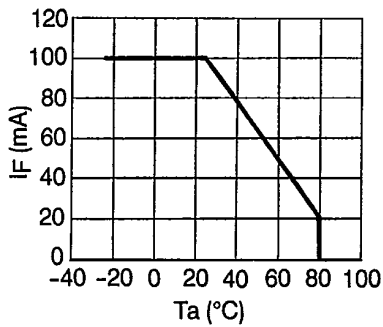
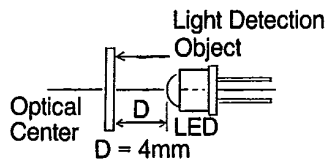
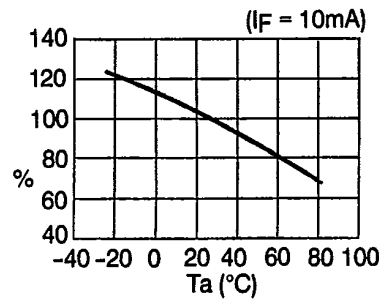
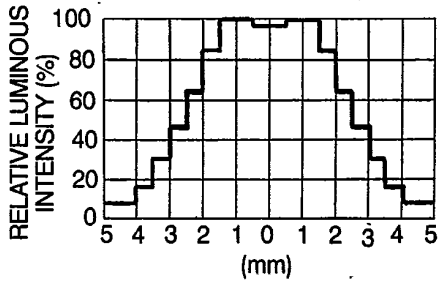
OPTO-ELECTRICAL CHARACTERISTICS (Ta=25°C)

CHARACTERISTIC	SYMBOL	TEST CONDITION	MIN	TYP.	MAX.	UNIT
Forward Voltage	V _F	I _F =50mA	—	1.35	1.6	V
Reverse Current	I _R	V _R =6V	—	—	10	μA
Peak Wave Length	λ _P	I _F =50mA	—	890	—	nm
Viewing Angle	θ		—	12	—	°
Spectral Line Half Width	Δλ	I _F =50mA	—	80	—	nm
Power Output	P _O	I _F =50mA	3.0	6.0	—	mW
Capacitance	C _J	V _F =0V, f=1MHz	—	40	—	pf
Switching Speed	T _r	I _{FP} = 100mA		500		ns
	T _f					

INFRARED EMITTER T-41-13



** BRIGHTNESS DISTRIBUTION (D = 4mm)



MARKTECH INTERNATIONAL