

# TA75W393FU

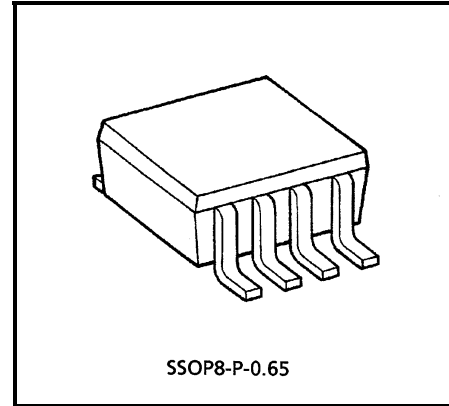
## Dual Voltage Comparator

This device consist of two independent voltage comparators that designed to operate from a single power supply over a wide range of voltage.

Normal operation from dual supplies is also to be guaranteed on voltage range from  $\pm 1V$  to  $\pm 18V$ .

VCC is necessary at least more 1.5V volts than the input common mode voltage.

The output can be connected to other open collector outputs to achieve Wired-OR relation ship.

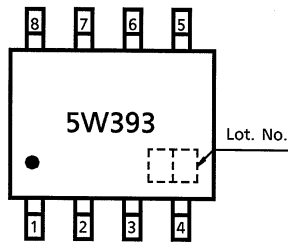


Weight: 0.021g (typ.)

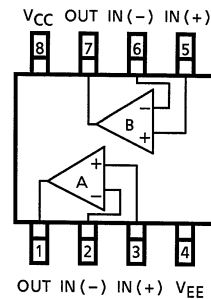
### Features

- Compatible to TA75393F.
- Single supply voltage range or dual supplies : 2VDC to 36VDC or  $\pm 1VDC$  to  $\pm 18VDC$
- Low supply current : 0.8mA (typ.)
- Low input offset voltage :  $\pm 2mV$  (typ.)
- Wide input common mode voltage range : 0VDC to  $VCC - 1.5VDC$
- Output compatible with TTL, DTL, MOS and CMOS logic system.
- The output can be connected to achieve Wired-OR relation..

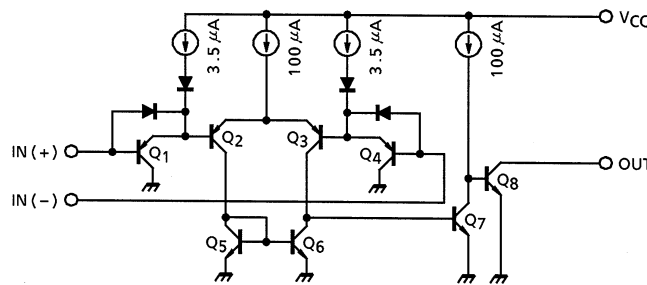
### Marking (Top View)



### Pin Connection (Top View)



## Equivalent Circuit



## Absolute Maximum Ratings (Ta = 25°C)

Characteristic	Symbol	Rating	Unit
Supply voltage	$V_{CC}, V_{EE}$	$\pm 18$ or 36	V
Differential input voltage	$DV_{IN}$	$\pm 36$	V
Input voltage	$V_{IN}$	$+0.3 \sim V_{CC}$	V
Power dissipation	$P_D$	250	mW
Operating temperature	$T_{opr}$	$-40 \sim 85$	°C
Storage temperature	$T_{stg}$	$-55 \sim 125$	°C

Note: Using continuously under heavy loads (e.g. the application of high temperature/current/voltage and the significant change in temperature, etc.) may cause this product to decrease in the reliability significantly even if the operating conditions (i.e. operating temperature/current/voltage, etc.) are within the absolute maximum ratings and the operating ranges.

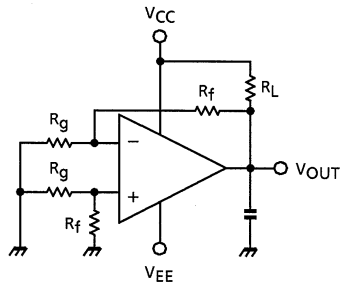
Please design the appropriate reliability upon reviewing the Toshiba Semiconductor Reliability Handbook ("Handling Precautions"/"Derating Concept and Methods") and individual reliability data (i.e. reliability test report and estimated failure rate, etc).

## Electrical Characteristics ( $V_{CC} = 5V, V_{EE} = GND, Ta = 25^\circ C$ )

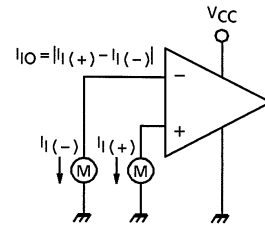
Characteristic	Symbol	Test Circuit	Test Condition	Min	Typ.	Max	Unit
Input offset voltage	$V_{IO}$	1	—	—	2	5	mV
Input bias current	$I_I$	2	—	—	25	250	nA
Input offset current	$I_{IO}$	2	—	—	5	50	nA
Common mode input voltage	$CMV_{IN}$	—	—	0	—	$V_{CC} - 1.5$	V
Supply current	$I_{CC}$	3	No load	—	0.8	2	mA
Voltage gain	$G_V$	—	$R_L = 15k\Omega$	—	200	—	V/mA
Sink current	$I_{sink}$	4	$IN (+) = 0V_{DC}, IN (-) = 1V_{DC}$ $V_{OL} = 1.5V$	6	16	—	nA
Output Voltage ("L" Level)	$V_{OL}$	5	$IN (+) = 0V_{DC}, IN (-) = 1V_{DC}$ $I_{sink} = 3mA$	—	0.2	0.4	V
Output Leak Current	$I_{LEAK}$	—	$IN (+) = 1V_{DC}, IN (-) = 0V_{DC}$ $V_O = 5V_{DC}$	—	0.1	—	nA
Response Time	$t_{rsp}$	6	$R_L = 5.1k\Omega, C_L = 15pF$	—	1.3	—	$\mu s$

**Test Circuit**

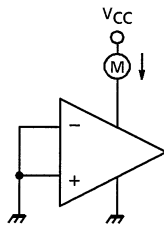
**(1)  $V_{IO}$**



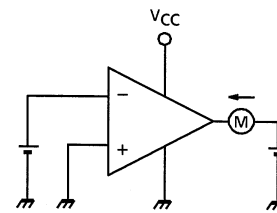
**(2)  $I_I, I_{IO}$**



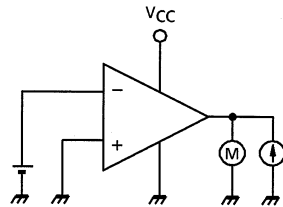
**(3)  $I_{CC}$**



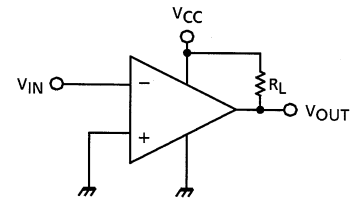
**(4)  $I_{sink}$**

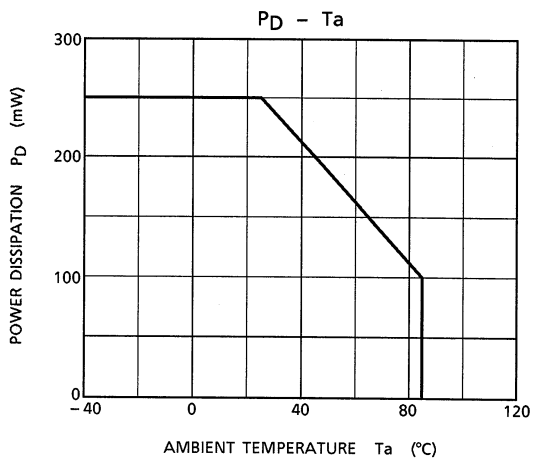
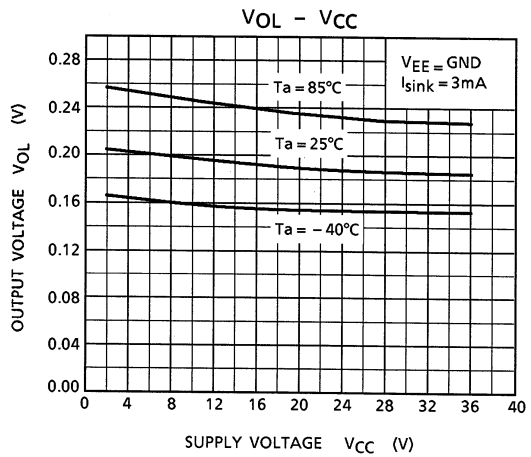
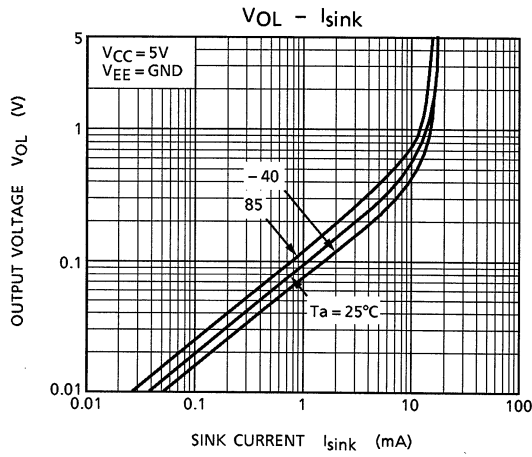
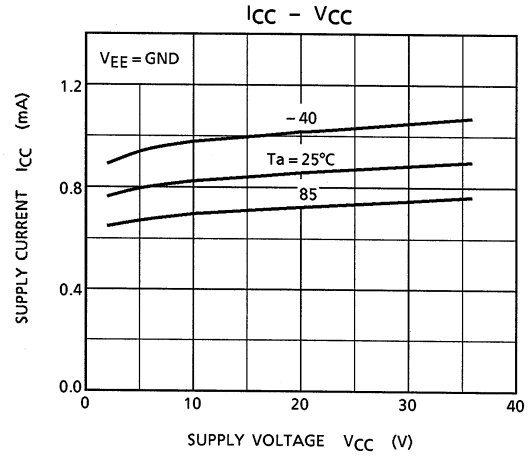
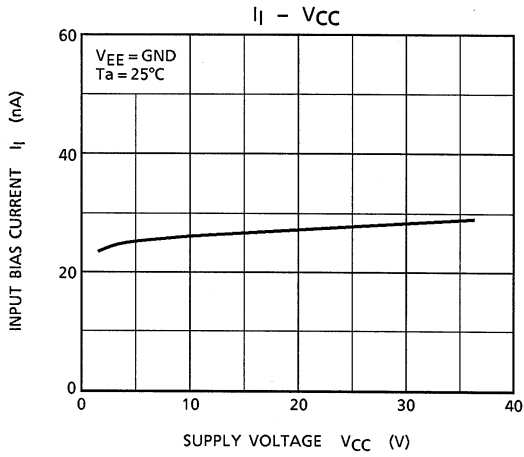


**(5)  $V_{OL}$**



**(6)  $t_{rsp}$**

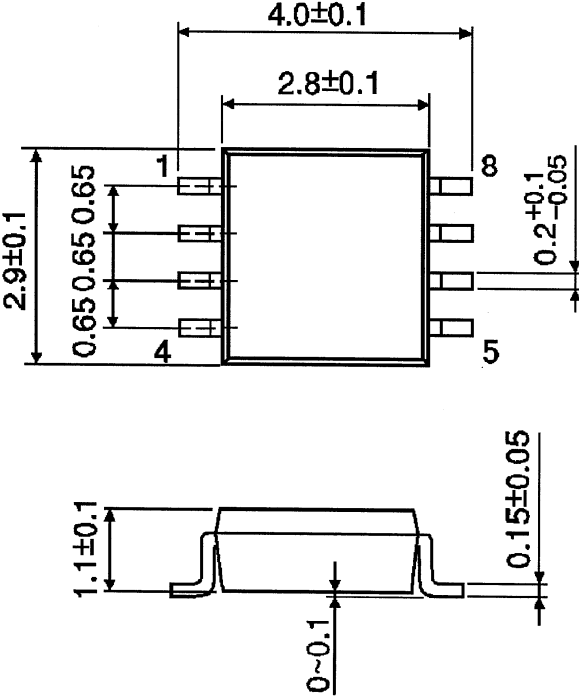




**Package Dimensions**

SSOP8-P-0.65

Unit: mm



Weight: 0.021g (typ.)

**RESTRICTIONS ON PRODUCT USE**

20070701-EN GENERAL

- The information contained herein is subject to change without notice.
- TOSHIBA is continually working to improve the quality and reliability of its products. Nevertheless, semiconductor devices in general can malfunction or fail due to their inherent electrical sensitivity and vulnerability to physical stress. It is the responsibility of the buyer, when utilizing TOSHIBA products, to comply with the standards of safety in making a safe design for the entire system, and to avoid situations in which a malfunction or failure of such TOSHIBA products could cause loss of human life, bodily injury or damage to property.  
In developing your designs, please ensure that TOSHIBA products are used within specified operating ranges as set forth in the most recent TOSHIBA products specifications. Also, please keep in mind the precautions and conditions set forth in the "Handling Guide for Semiconductor Devices," or "TOSHIBA Semiconductor Reliability Handbook" etc.
- The TOSHIBA products listed in this document are intended for usage in general electronics applications (computer, personal equipment, office equipment, measuring equipment, industrial robotics, domestic appliances, etc.). These TOSHIBA products are neither intended nor warranted for usage in equipment that requires extraordinarily high quality and/or reliability or a malfunction or failure of which may cause loss of human life or bodily injury ("Unintended Usage"). Unintended Usage include atomic energy control instruments, airplane or spaceship instruments, transportation instruments, traffic signal instruments, combustion control instruments, medical instruments, all types of safety devices, etc.. Unintended Usage of TOSHIBA products listed in this document shall be made at the customer's own risk.
- The products described in this document shall not be used or embedded to any downstream products of which manufacture, use and/or sale are prohibited under any applicable laws and regulations.
- The information contained herein is presented only as a guide for the applications of our products. No responsibility is assumed by TOSHIBA for any infringements of patents or other rights of the third parties which may result from its use. No license is granted by implication or otherwise under any patents or other rights of TOSHIBA or the third parties.
- Please contact your sales representative for product-by-product details in this document regarding RoHS compatibility. Please use these products in this document in compliance with all applicable laws and regulations that regulate the inclusion or use of controlled substances. Toshiba assumes no liability for damage or losses occurring as a result of noncompliance with applicable laws and regulations.