

# LM2990QML

## Negative Low Dropout Regulator

### General Description

The LM2990 is a three-terminal, low dropout, 1 ampere negative voltage regulator available with a fixed output voltage of -5V.

The LM2990 uses new circuit design techniques to provide low dropout and low quiescent current. The dropout voltage at 1A load current is typically 0.6V and a guaranteed worst-case maximum of 1V over the entire operating temperature range. The quiescent current is typically 1 mA with 1A load current and an input-output voltage differential greater than 3V. A unique circuit design of the internal bias supply limits the quiescent current to only 9 mA (typical) when the regulator is in the dropout mode ( $V_{OUT} - V_{IN} \leq 3V$ ). Output voltage accuracy is guaranteed to  $\pm 5\%$  over load, and temperature extremes.

The LM2990 is short-circuit proof, and thermal shutdown includes hysteresis to enhance the reliability of the device when overloaded for an extended period of time.

### Features

- 5% output accuracy over entire operating range
- Output current in excess of 1A
- Dropout voltage typically 0.6V at 1A load
- Low quiescent current
- Internal short circuit current limit
- Internal thermal shutdown with hysteresis
- Functional complement to the LM2940 series

### Applications

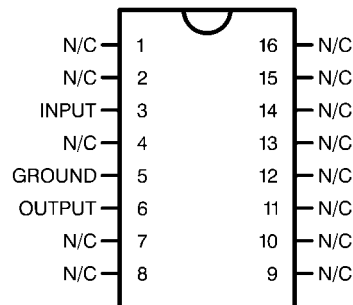
- Post switcher regulator
- Local, on-card, regulation
- Battery operated equipment

### Ordering Information

| NS Part Number | SMD Part Number | NS Package Number | Package Description |
|----------------|-----------------|-------------------|---------------------|
| LM2990-5.0 MD8 |                 | (Note 1)          | Bare Die            |
| LM2990-5.0 MW8 |                 | (Note 1)          | Bare Die            |

Note 1: FOR ADDITIONAL DIE INFORMATION, PLEASE VISIT THE HI REL WEB SITE AT: [www.national.com/analog/space/level\\_die](http://www.national.com/analog/space/level_die)

#### 16-Lead Ceramic Dual-in-Line Package



20158633

Top View  
See NS Package Number J16A



## Absolute Maximum Ratings *(Note 2)*

|  |  |
|--|--|
| Input Voltage                              | -26V to +0.3V  |
| Power Dissipation <i>(Note 3)</i>          | Internally Limited                                       |
| Junction Temperature ( $T_{Jmax}$ )        | 150°C  |
| Storage Temperature                        | $-65^{\circ}\text{C} \leq T_A \leq +150^{\circ}\text{C}$ |
| Thermal Resistance                         |  |
| $\theta_{JA}$                              |  |
| Ceramic Dip (Still Air @ 0.5°C/W)          | 75°C/W   |
| Ceramic Dip (500LF/Min Air flow @ 0.5°C/W) | 35°C/W   |
| $\theta_{JC}$                              |  |
| Ceramic Dip <i>(Note 4)</i>                | 5°C/W  |
| Package Weight                             |  |
| Ceramic Dip                                | TBD  |
| Lead Temperature (Soldering, 10 sec.)      | 260°C  |
| ESD Susceptibility <i>(Note 5)</i>         | 2KV  |

## Recommended Operating Conditions *(Note 2)*

|                                     |  |
|-------------------------------------|--|
| Temperature Range ( $T_J$ )         | $-55^{\circ}\text{C} \leq T_J \leq +125^{\circ}\text{C}$ |
| Maximum Input Voltage (Operational) | -26V   |

## Quality Conformance Inspection

Mil-Std-883, Method 5005 - Group A

| Subgroup | Description         | Temp (°C) |
|----------|---------------------|-----------|
| 1        | Static tests at     | +25       |
| 2        | Static tests at     | +125      |
| 3        | Static tests at     | -55       |
| 4        | Dynamic tests at    | +25       |
| 5        | Dynamic tests at    | +125      |
| 6        | Dynamic tests at    | -55       |
| 7        | Functional tests at | +25       |
| 8A       | Functional tests at | +125      |
| 8B       | Functional tests at | -55       |
| 9        | Switching tests at  | +25       |
| 10       | Switching tests at  | +125      |
| 11       | Switching tests at  | -55       |
| 12       | Settling time at    | +25       |
| 13       | Settling time at    | +125      |
| 14       | Settling time at    | -55       |

## LM2990-5.0 Electrical Characteristics

### DC Parameters

The following conditions apply, unless otherwise specified.  $V_{IN} = -5V + V_{O\text{Nom}}$ ,  $I_O = 1A$ ,  $C_O = 47\mu F$  (Note 6)

| Symbol      | Parameter              | Conditions   | Notes    | Min   | Max   | Unit    | Sub-groups |
|-------------|------------------------|--|----------|-------|-------|---------|------------|
| $V_O$       | Output Voltage         | $5mA \leq I_O \leq 1A$   |          | -5.10 | -4.90 | V       | 1          |
|             |                        |  |          | -5.25 | -4.75 | V       | 2, 3       |
| $V_{RLine}$ | Line Regulation        | $I_O = 5mA$ ,<br>$V_{O\text{Nom}} - 1V > V_{IN} > -26V$        |          |       | 40    | mV      | 1, 2, 3    |
| $V_{RLoad}$ | Load Regulation        | $50mA \leq I_O \leq 1A$  |          |       | 70    | mV      | 1          |
|             |                        |  |          |       | 100   | mV      | 2, 3       |
| $V_{DO}$    | Dropout Voltage        | $I_O = 0.1A$ , $\Delta V_O \leq 100mV$                         |          |       | 0.3   | V       | 1, 2, 3    |
|             |                        | $I_O = 1A$ , $\Delta V_O \leq 100mV$                           |          |       | 1.0   | V       | 1, 2, 3    |
| $I_Q$       | Quiescent Current      | $I_O \leq 1A$  |          |       | 5.0   | mA      | 1          |
|             |                        |  |          |       | 10    | mA      | 2, 3       |
|             |                        | $I_O = 1A$ , $V_{IN} = V_{O\text{Nom}}$                        |          |       | 50    | mA      | 1, 2, 3    |
| $I_{OS}$    | Short Circuit Current  | $R_L = 1\Omega$  |          | 1.5   |       | A       | 1          |
|             |                        |  | (Note 7) | 1.3   |       | A       | 2, 3       |
| $I_{Max}$   | Maximum Output Current |  | (Note 7) | 1.5   |       | A       | 1          |
| RR          | Ripple Rejection       | $V_{Ripple} = 1V_{RMS}$ , $F_{Ripple} = 1KHz$ ,<br>$I_O = 5mA$ |          | 50    |       | dB      | 1          |
| $V_{On}$    | Output Noise Voltage   | 10Hz-100Khz, $I_O = 5mA$                                       |          |       | 750   | $\mu V$ | 1, 2, 3    |

**Note 2:** Absolute Maximum Ratings indicate limits beyond which damage to the device may occur. Operating Ratings indicate conditions for which the device is functional, but do not guarantee specific performance limits. For guaranteed specifications and test conditions, see the Electrical Characteristics. The guaranteed specifications apply only for the test conditions listed. Some performance characteristics may degrade when the device is not operated under the listed test conditions.

**Note 3:** The maximum power dissipation must be derated at elevated temperatures and is dictated by  $T_{Jmax}$  (maximum junction temperature),  $\theta_{JA}$  (package junction to ambient thermal resistance), and  $T_A$  (ambient temperature). The maximum allowable power dissipation at any temperature is  $P_{Dmax} = (T_{Jmax} - T_A) / \theta_{JA}$  or the number given in the Absolute Maximum Ratings, whichever is lower.

**Note 4:** The package material for these devices allows much improved heat transfer over our standard ceramic packages. In order to take full advantage of this improved heat transfer, heat sinking must be provided between the package base (directly beneath the die), and either metal traces on, or thermal vias through, the printed circuit board. Without this additional heat sinking, device power dissipation must be calculated using  $\theta_{JA}$ , rather than  $\theta_{JC}$ , thermal resistance. It must not be assumed that the device leads will provide substantial heat transfer out of the package, since the thermal resistance of the leadframe material is very poor, relative to the material of the package base. The stated  $\theta_{JC}$  thermal resistance is for the package material only, and does not account for the additional thermal resistance between the package base and the printed circuit board. The user must determine the value of the additional thermal resistance and must combine this with the stated value for the package, to calculate the total allowed power dissipation for the device.

**Note 5:** Human body model, 1.5 k $\Omega$  in series with 100 pF.

**Note 6:**  $V_{O\text{Nom}}$  is the nominal (typical) regulator output voltage, -5V.

**Note 7:** The -5V version, tested with a lower input voltage, does not reach the foldback current limit and therefore conducts a higher short circuit current level. If the LM2990 output is pulled above ground, the maximum allowed current sunk back into the LM2990 is 1.5A.

## Definition of Terms

**Dropout Voltage:** The input-output voltage differential at which the circuit ceases to regulate against further reduction in input voltage. Measured when the output voltage has dropped 100 mV from the nominal value obtained at ( $V_O + 5V$ ) input, dropout voltage is dependent upon load current and junction temperature.

**Input Voltage:** The DC voltage applied to the input terminals with respect to ground.

**Input-Output Differential:** The voltage difference between the unregulated input voltage and the regulated output voltage for which the regulator will operate.

**Line Regulation:** The change in output voltage for a change in the input voltage. The measurement is made under conditions of low dissipation or by using pulse techniques such that the average chip temperature is not significantly affected.

**Load Regulation:** The change in output voltage for a change in load current at constant chip temperature.

**Long Term Stability:** Output voltage stability under accelerated life-test conditions after 1000 hours with maximum rated voltage and junction temperature.

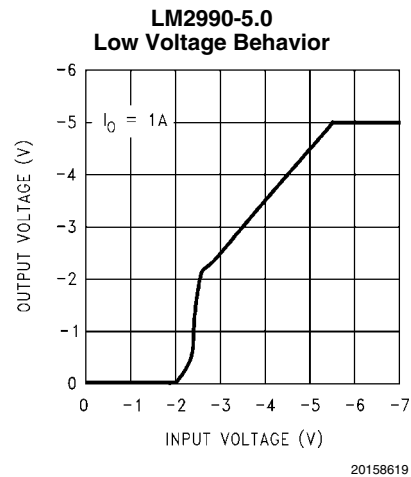
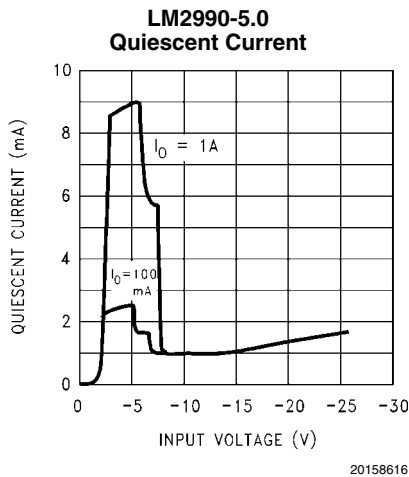
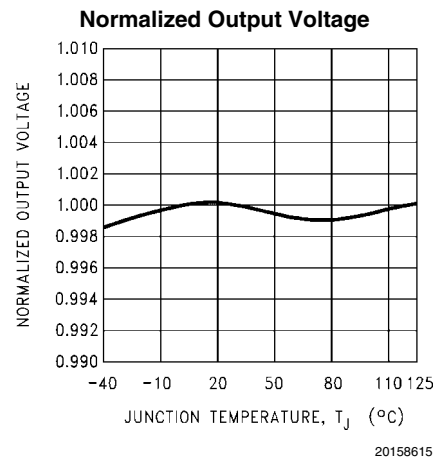
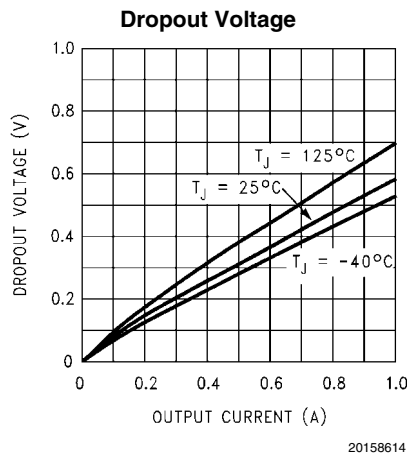
**Output Noise Voltage:** The RMS AC voltage at the output, with constant load and no input ripple, measured over a specified frequency range.

**Quiescent Current:** That part of the positive input current that does not contribute to the positive load current. The regulator ground lead current.

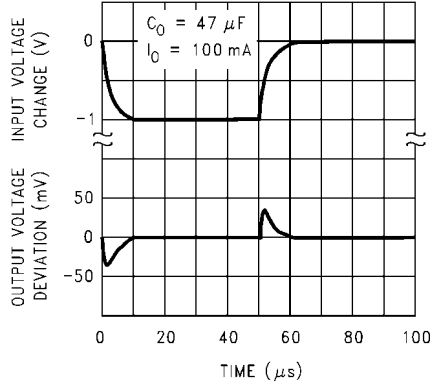
**Ripple Rejection:** The ratio of the peak-to-peak input ripple voltage to the peak-to-peak output ripple voltage.

**Temperature Stability of  $V_O$ :** The percentage change in output voltage for a thermal variation from room temperature to either temperature extreme.

## Typical Performance Characteristics

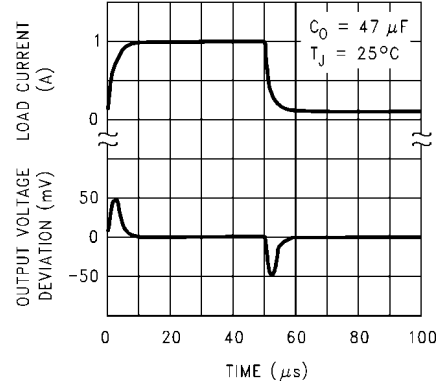


**LM2990-5.0**  
**Line Transient Response**



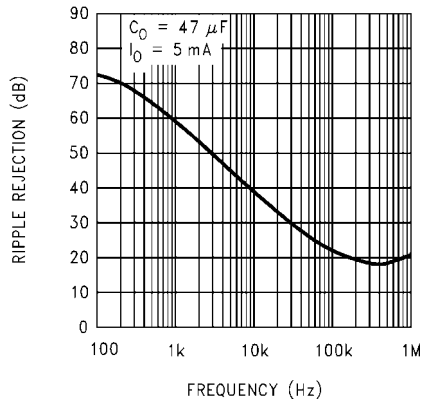
20158620

**LM2990-5.0**  
**Load Transient Response**



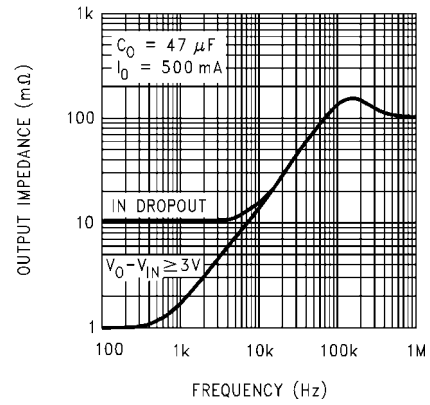
20158621

**LM2990-5.0**  
**Ripple Rejection**



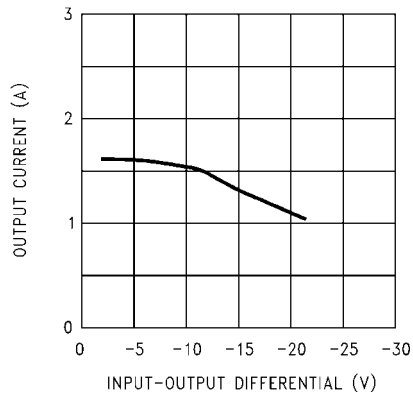
20158625

**LM2990-5.0**  
**Output Impedance**



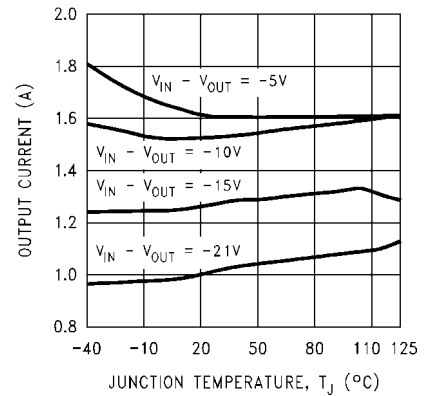
20158626

**Maximum Output Current**



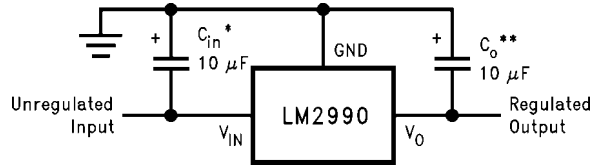
20158627

**Maximum Output Current**



20158630

# Typical Applications

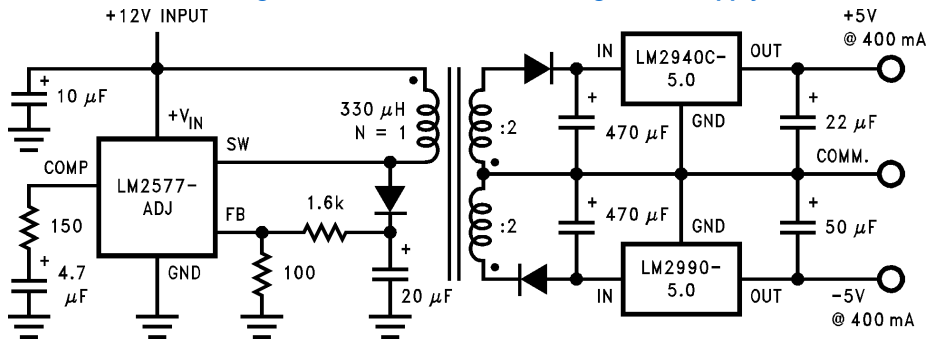


20158601

\*Required if the regulator is located further than 6 inches from the power supply filter capacitors. A 1 µF solid tantalum or a 10 µF aluminum electrolytic capacitor is recommended.

\*\*Required for stability. Must be at least a 10 µF aluminum electrolytic or a 1 µF solid tantalum to maintain stability. May be increased without bound to maintain regulation during transients. Locate the capacitor as close as possible to the regulator. The equivalent series resistance (ESR) is critical, and should be less than 10Ω over the same operating temperature range as the regulator.

## Post Regulator for an Isolated Switching Power Supply

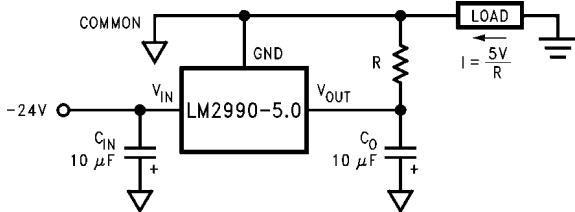


20158605

The LM2940 is a positive 1A low dropout regulator; refer to its datasheet for further information.

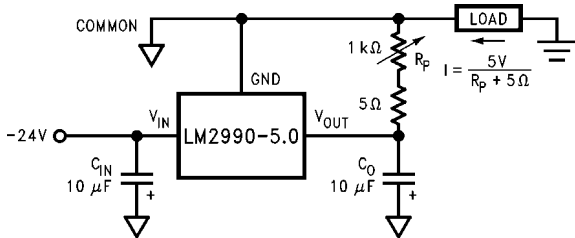
gin, creating oscillations (refer to the graph on the right). An input capacitor, of at least 1 µF solid tantalum or 10 µF aluminum electrolytic, is also needed if the regulator is situated more than 6 from the input power supply filter.

## Fixed Current Sink



20158607

## Adjustable Current Sink

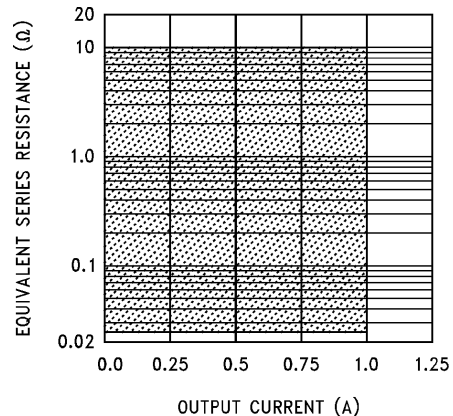


20158610

## FORCING THE OUTPUT POSITIVE

Due to an internal clamp circuit, the LM2990 can withstand positive voltages on its output. If the voltage source pulling the output positive is DC, the current must be limited to 1.5A. A current over 1.5A fed back into the LM2990 could damage the device. The LM2990 output can also withstand fast positive voltage transients up to 26V, without any current limiting of the source. However, if the transients have a duration of over 1 mS, the output should be clamped with a Schottky diode to ground.

## Output Capacitor ESR



20158609

# Application Hints

## EXTERNAL CAPACITORS

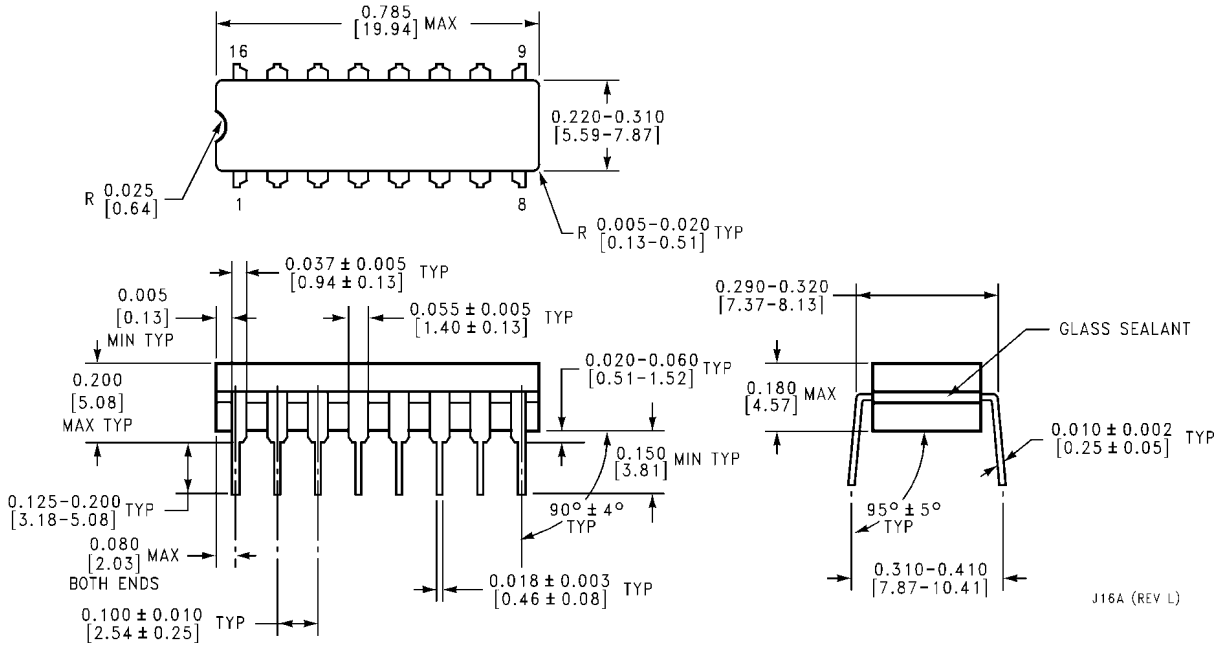
The LM2990 regulator requires an output capacitor to maintain stability. The capacitor must be at least 10 µF aluminum electrolytic or 1 µF solid tantalum. The output capacitor's ESR must be less than 10Ω, or the zero added to the regulator frequency response by the ESR could reduce the phase mar-

## Revision History

| Released   | Revision | Section                       | Changes  |
|------------|----------|-------------------------------|--|
| 12/08/2010 | A        | New Release, Corporate format | MDS data sheet converted into Corp. data sheet format. Data Sheet referencing Die NSID LM2990–5.0 MD8 and MW8 only. Package products are Code K no longer available. Archive the 3 MDS data sheets MNLM2990-5.0-X Rev 0B1, MNLM2990-12-X Rev 0B0, and MNLM2990-15-X Rev 0B0. |



**Physical Dimensions** inches (millimeters) unless otherwise noted



**16-Lead Ceramic Dual-in-Line Package  
NS Package Number J16A**

J16A (REV L)

## Notes

For more National Semiconductor product information and proven design tools, visit the following Web sites at:  
[www.national.com](http://www.national.com)

| Products                       |  | Design Support               |  |
|--------------------------------|--|------------------------------|--|
| Amplifiers                     | <a href="http://www.national.com/amplifiers">www.national.com/amplifiers</a> | WEBENCH® Tools               | <a href="http://www.national.com/webench">www.national.com/webench</a>             |
| Audio                          | <a href="http://www.national.com/audio">www.national.com/audio</a>           | App Notes                    | <a href="http://www.national.com/appnotes">www.national.com/appnotes</a>           |
| Clock and Timing               | <a href="http://www.national.com/timing">www.national.com/timing</a>         | Reference Designs            | <a href="http://www.national.com/refdesigns">www.national.com/refdesigns</a>       |
| Data Converters                | <a href="http://www.national.com/adc">www.national.com/adc</a>               | Samples                      | <a href="http://www.national.com/samples">www.national.com/samples</a>             |
| Interface                      | <a href="http://www.national.com/interface">www.national.com/interface</a>   | Eval Boards                  | <a href="http://www.national.com/evalboards">www.national.com/evalboards</a>       |
| LVDS                           | <a href="http://www.national.com/lvds">www.national.com/lvds</a>             | Packaging                    | <a href="http://www.national.com/packaging">www.national.com/packaging</a>         |
| Power Management               | <a href="http://www.national.com/power">www.national.com/power</a>           | Green Compliance             | <a href="http://www.national.com/quality/green">www.national.com/quality/green</a> |
| Switching Regulators           | <a href="http://www.national.com/switchers">www.national.com/switchers</a>   | Distributors                 | <a href="http://www.national.com/contacts">www.national.com/contacts</a>           |
| LDOs                           | <a href="http://www.national.com/lido">www.national.com/lido</a>             | Quality and Reliability      | <a href="http://www.national.com/quality">www.national.com/quality</a>             |
| LED Lighting                   | <a href="http://www.national.com/led">www.national.com/led</a>               | Feedback/Support             | <a href="http://www.national.com/feedback">www.national.com/feedback</a>           |
| Voltage References             | <a href="http://www.national.com/vref">www.national.com/vref</a>             | Design Made Easy             | <a href="http://www.national.com/easy">www.national.com/easy</a>                   |
| PowerWise® Solutions           | <a href="http://www.national.com/powerwise">www.national.com/powerwise</a>   | Applications & Markets       | <a href="http://www.national.com/solutions">www.national.com/solutions</a>         |
| Serial Digital Interface (SDI) | <a href="http://www.national.com/sdi">www.national.com/sdi</a>               | Mil/Aero                     | <a href="http://www.national.com/milaero">www.national.com/milaero</a>             |
| Temperature Sensors            | <a href="http://www.national.com/tempensors">www.national.com/tempensors</a> | SolarMagic™                  | <a href="http://www.national.com/solarmagic">www.national.com/solarmagic</a>       |
| PLL/VCO                        | <a href="http://www.national.com/wireless">www.national.com/wireless</a>     | PowerWise® Design University | <a href="http://www.national.com/training">www.national.com/training</a>           |

THE CONTENTS OF THIS DOCUMENT ARE PROVIDED IN CONNECTION WITH NATIONAL SEMICONDUCTOR CORPORATION ("NATIONAL") PRODUCTS. NATIONAL MAKES NO REPRESENTATIONS OR WARRANTIES WITH RESPECT TO THE ACCURACY OR COMPLETENESS OF THE CONTENTS OF THIS PUBLICATION AND RESERVES THE RIGHT TO MAKE CHANGES TO SPECIFICATIONS AND PRODUCT DESCRIPTIONS AT ANY TIME WITHOUT NOTICE. NO LICENSE, WHETHER EXPRESS, IMPLIED, ARISING BY ESTOPPEL OR OTHERWISE, TO ANY INTELLECTUAL PROPERTY RIGHTS IS GRANTED BY THIS DOCUMENT.

TESTING AND OTHER QUALITY CONTROLS ARE USED TO THE EXTENT NATIONAL DEEMS NECESSARY TO SUPPORT NATIONAL'S PRODUCT WARRANTY. EXCEPT WHERE MANDATED BY GOVERNMENT REQUIREMENTS, TESTING OF ALL PARAMETERS OF EACH PRODUCT IS NOT NECESSARILY PERFORMED. NATIONAL ASSUMES NO LIABILITY FOR APPLICATIONS ASSISTANCE OR BUYER PRODUCT DESIGN. BUYERS ARE RESPONSIBLE FOR THEIR PRODUCTS AND APPLICATIONS USING NATIONAL COMPONENTS. PRIOR TO USING OR DISTRIBUTING ANY PRODUCTS THAT INCLUDE NATIONAL COMPONENTS, BUYERS SHOULD PROVIDE ADEQUATE DESIGN, TESTING AND OPERATING SAFEGUARDS.

EXCEPT AS PROVIDED IN NATIONAL'S TERMS AND CONDITIONS OF SALE FOR SUCH PRODUCTS, NATIONAL ASSUMES NO LIABILITY WHATSOEVER, AND NATIONAL DISCLAIMS ANY EXPRESS OR IMPLIED WARRANTY RELATING TO THE SALE AND/OR USE OF NATIONAL PRODUCTS INCLUDING LIABILITY OR WARRANTIES RELATING TO FITNESS FOR A PARTICULAR PURPOSE, MERCHANTABILITY, OR INFRINGEMENT OF ANY PATENT, COPYRIGHT OR OTHER INTELLECTUAL PROPERTY RIGHT.

#### LIFE SUPPORT POLICY

**NATIONAL'S PRODUCTS ARE NOT AUTHORIZED FOR USE AS CRITICAL COMPONENTS IN LIFE SUPPORT DEVICES OR SYSTEMS WITHOUT THE EXPRESS PRIOR WRITTEN APPROVAL OF THE CHIEF EXECUTIVE OFFICER AND GENERAL COUNSEL OF NATIONAL SEMICONDUCTOR CORPORATION.** As used herein:

Life support devices or systems are devices which (a) are intended for surgical implant into the body, or (b) support or sustain life and whose failure to perform when properly used in accordance with instructions for use provided in the labeling can be reasonably expected to result in a significant injury to the user. A critical component is any component in a life support device or system whose failure to perform can be reasonably expected to cause the failure of the life support device or system or to affect its safety or effectiveness.

National Semiconductor and the National Semiconductor logo are registered trademarks of National Semiconductor Corporation. All other brand or product names may be trademarks or registered trademarks of their respective holders.

Copyright© 2010 National Semiconductor Corporation

For the most current product information visit us at [www.national.com](http://www.national.com)



**National Semiconductor Americas Technical Support Center**  
 Email: [support@nsc.com](mailto:support@nsc.com)  
 Tel: 1-800-272-9959

**National Semiconductor Europe Technical Support Center**  
 Email: [europe.support@nsc.com](mailto:europe.support@nsc.com)

**National Semiconductor Asia Pacific Technical Support Center**  
 Email: [ap.support@nsc.com](mailto:ap.support@nsc.com)

**National Semiconductor Japan Technical Support Center**  
 Email: [jpn.feedback@nsc.com](mailto:jpn.feedback@nsc.com)