

M62496FP

Electronic Volume Control with Built-in Speaten Filter

REJ03F0221-0201
Rev.2.01
Mar 31, 2008

Description

The M62496FP is a sound controller IC for mini stereo component and radio cassette units. It has stereo enhancing processor Speaten filter. (Best suited for compact size speakers systems) As a result, the reproduced sound is much clear to a live performance. You can get several class high quality.

Note: Licensing and application information may be obtained from Dedekind Lab.
The device available only to licensees of Dedekind Lab.
Use of this IC requires the license of Dedekind Lab. (Tokushima C. Japan)

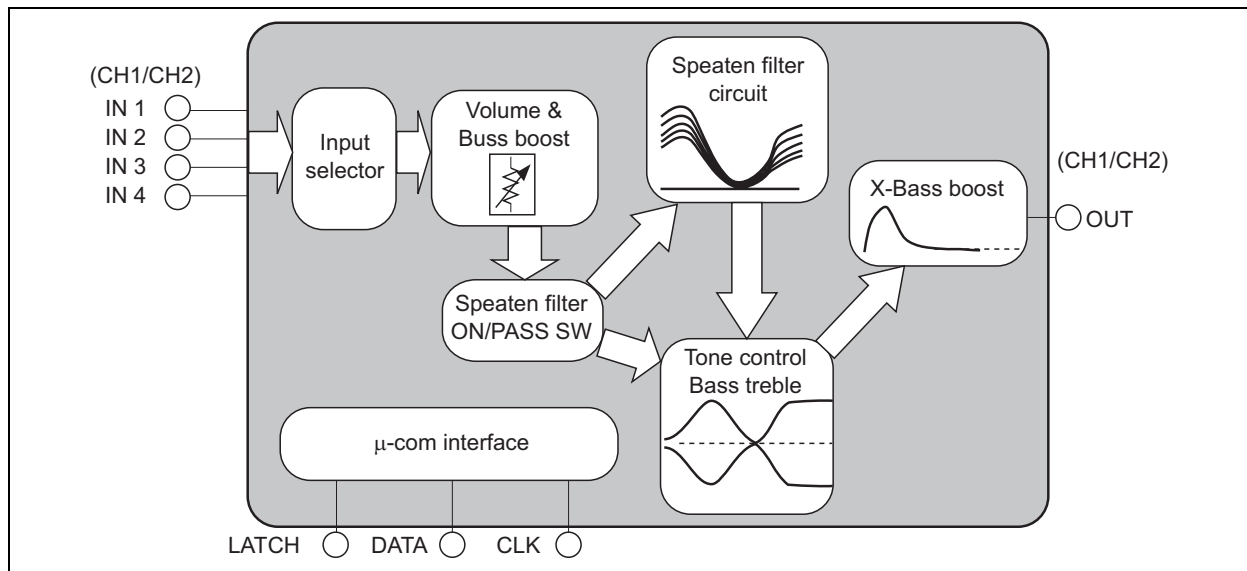
Features

- Built-in 4ch input selector
- Variable volume range 0 to -83 dB, $-\infty$ (1 dB/step)
- Built-in bass boost circuit (loudness type)
- Built-in speaten filter (5 mode)
- 2band tone control
(0, ± 2.0 , ± 4.0 , ± 6.0 , ± 8.0 , ± 10.0 , dB)
- Bass boost ON/OFF

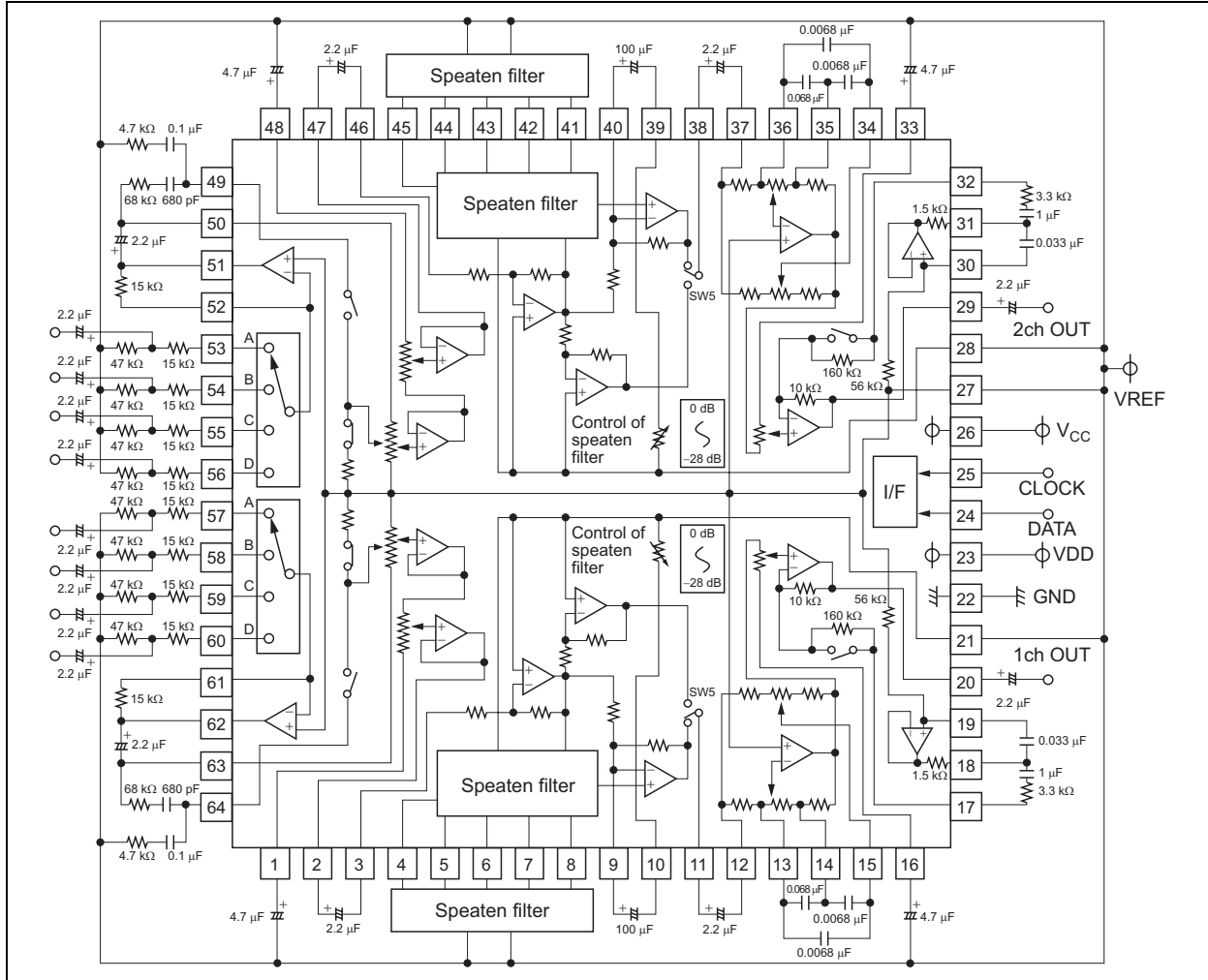
Recommended Operating Conditions

- Analog supply voltage range: 6.0 to 9.0 V
- Digital supply voltage range: 4.5 to 5.5 V

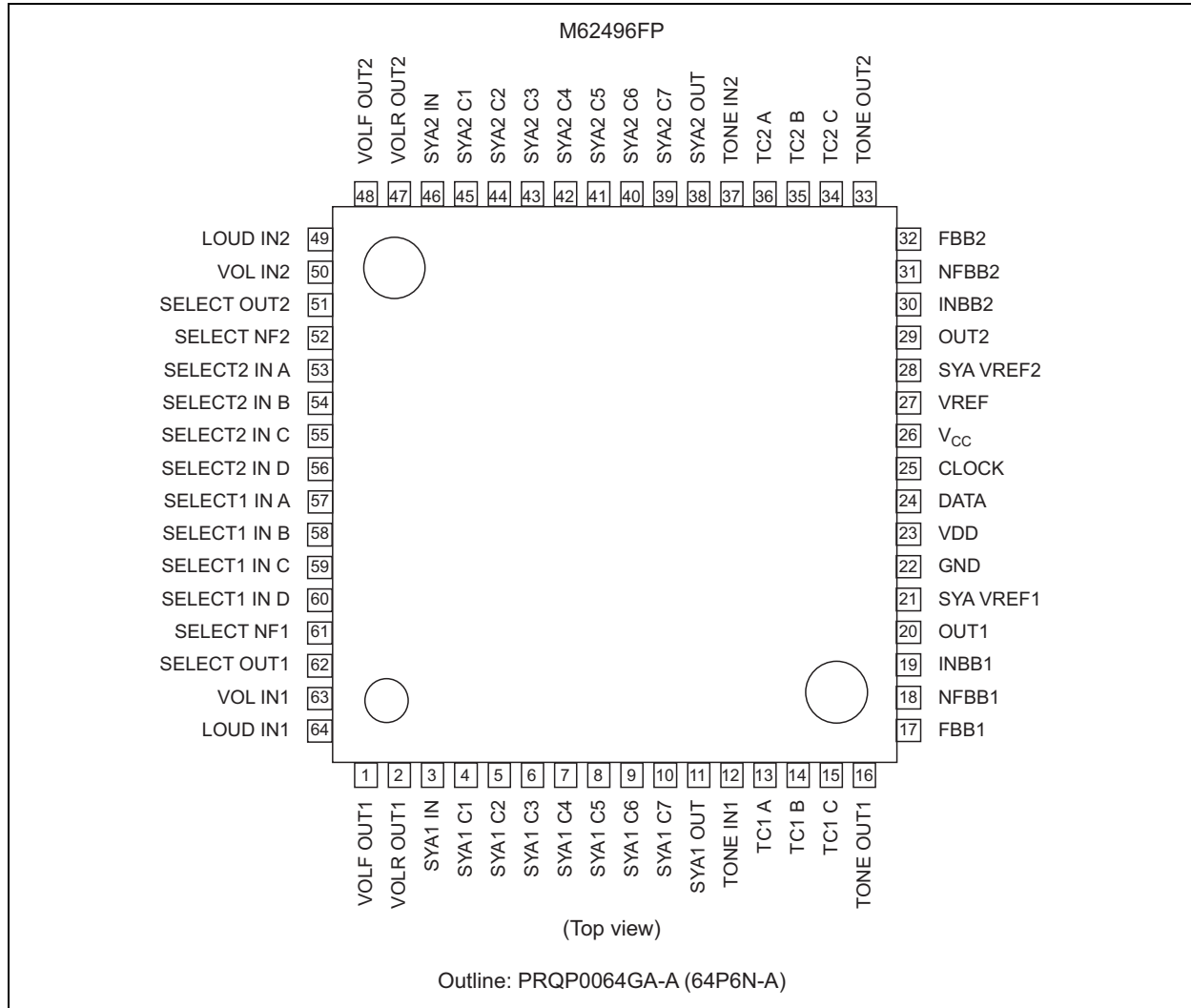
System Block Diagram



IC Internal Block Diagram



Pin Arrangement



Pin Description

Pin No.	Symbol	Function
57	SELECT1 IN A	Input pin for channel 1 of the input selector switch block.
58	SELECT1 IN B	
59	SELECT1 IN C	
60	SELECT1 IN D	
53	SELECT2 IN A	Input pin for channel 2 of the input selector switch block.
54	SELECT2 IN B	
55	SELECT2 IN C	
56	SELECT2 IN D	
61	SELECT NF1	Adjusts input gains by using the resistance between this pin and the SELECT OUT pin and by using resistance added to INA to IND.
52	SELECT NF2	
62	SELECT OUT1	Output pin of the input selector switch.
51	SELECT OUT2	
63	VOL IN1	Input pin of the volume block.
50	VOL IN2	
64	LOUD IN1	Pin for setting the frequency characteristics of the loudness block.
49	LOUD IN2	
1	VOLF OUT1	Output pin of the volume block (1st stage). Connect this pin to VREF pin with C connection to reduce switching noise.
48	VOLF OUT2	
2	VOLR OUT1	Output pin of the volume block (2nd stage).
47	VOLR OUT2	
3	SYA1 IN	Input pin of the speaten filter block.
46	SYA2 IN	
4	SYA1 C1	Pin for connecting filter of the speaten filter. (ch1)
5	SYA1 C2	
6	SYA1 C3	
7	SYA1 C4	
8	SYA1 C5	
45	SYA2 C1	Pin for connecting filter of the speaten filter. (ch2)
44	SYA2 C2	
43	SYA2 C3	
42	SYA2 C4	
41	SYA2 C5	
9	SYA1 C6	Reduce switching noise on speaten filter effect by using the capacitance between pin9 and pin10 (ch1)
10	SYA1 C7	
40	SYA2 C6	Reduce switching noise on speaten filter effect by using the capacitance between pin39 and pin40 (ch2)
39	SYA2 C7	
11	SYA1 OUT	Output pin of the speaten filter block.
38	SYA2 OUT	
12	TONE IN1	Input pin of the tone control block.
37	TONE IN2	
13	TC1 A	Pin for setting frequency characteristics of the tone control block for channel 1.
14	TC1 B	
15	TC1 C	
36	TC2 A	Pin for setting frequency characteristics of the tone control block for channel 2.
35	TC2 B	
34	TC2 C	
16	TONE OUT1	Output pin of the tone control block.
33	TONE OUT2	
17	FBB1	Resonant impedance (band-pass filter) connection pin for base section.
32	FBB2	

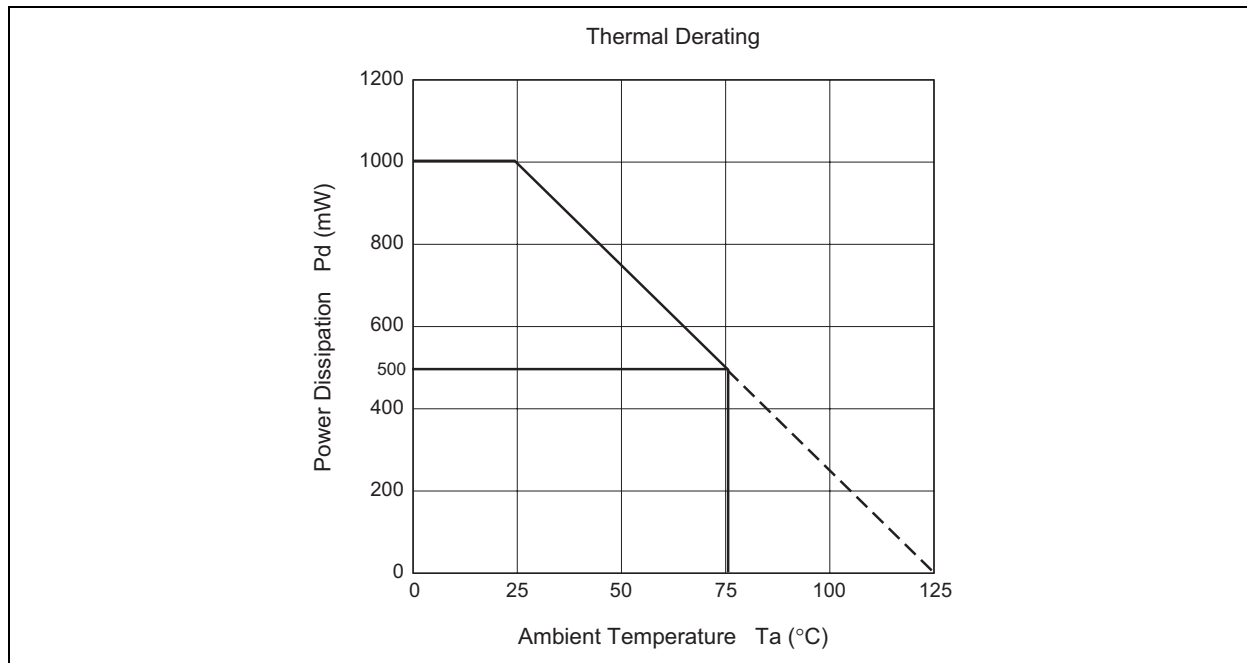
Pin Description(cont.)

Pin No.	Symbol	Function
18	NFBB1	Output pin of bass boosting resonant buffer amp.
31	NFBB2	
19	INBB1	Input pin of bass boosting resonant buffer amp.
30	INBB2	
20	OUT1	Final output pin of the ATT block.
29	OUT2	
21	SYA VREF1	Ground of the speaten filter speaten filter block. Apply $1/2V_{CC}$.
28	SYA VREF2	
22	GND	Ground pin
23	VDD	Digital power supply pin.
24	DATA	Input pin of the control data. This pin inputs data in synchronization with CLOCK.
25	CLOCK	Clock input pin for serial data transfer.
26	VCC	Analog power supply pin.
27	VREF	IC signal ground. Apply $1/2V_{CC}$.

Absolute Maximum Ratings

(Ta = 25°C, unless otherwise noted)

Item	Symbol	Ratings	Unit	Condition
Supply Voltage	V_{CC}, V_{DD}	10.7	V	
Power Dissipation	P_d	1000	mW	
Operating Temperature	T_{opr}	-20 to +75	°C	
Storage Temperature	T_{stg}	-40 to +125	°C	



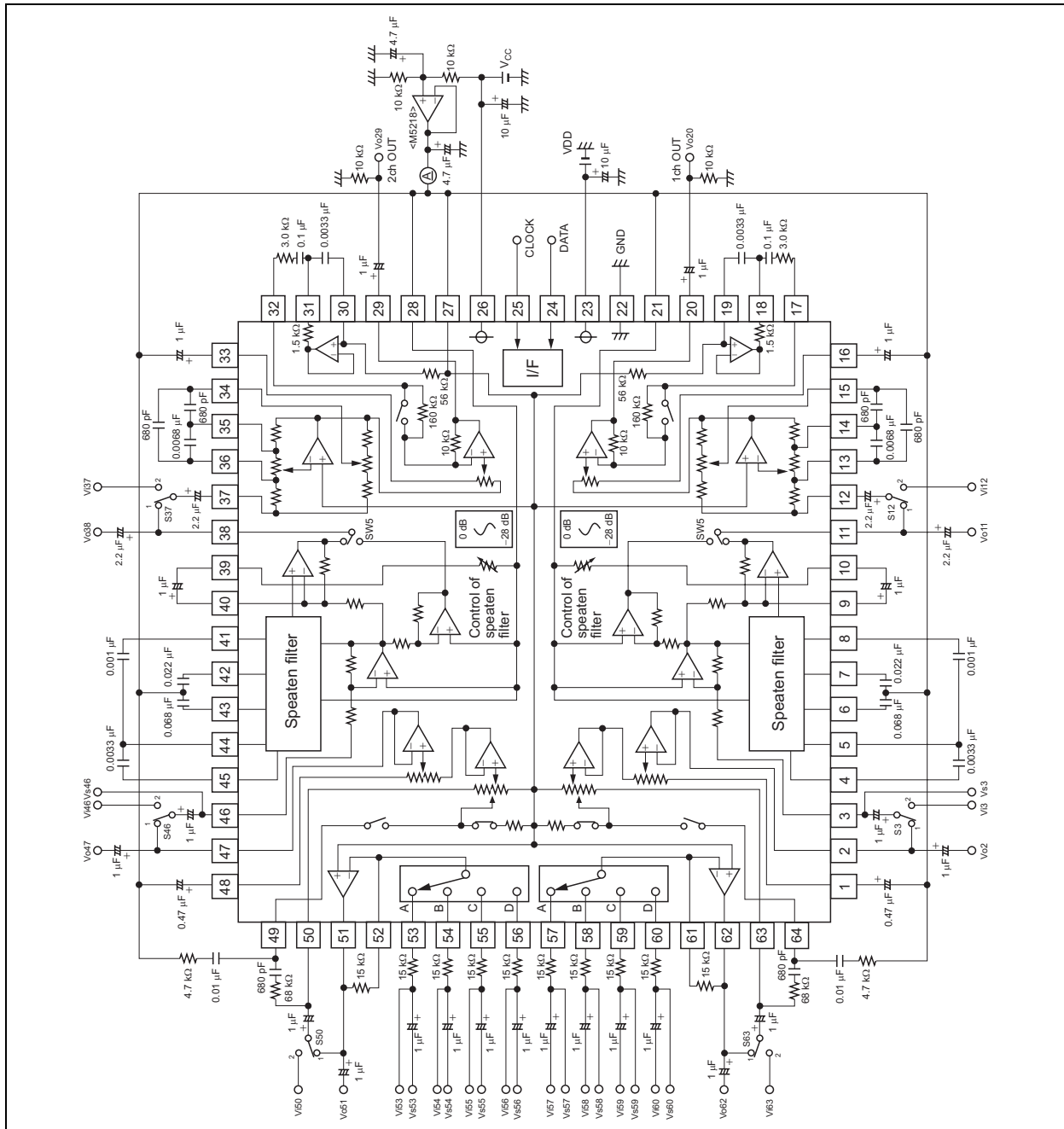
Electrical Characteristics

(Ta = 25°C, unless otherwise noted)

Item	Symbol	Limits			Unit	Conditions
		Min	Typ	Max		
Supply voltage						
Circuit current	ICC	—	50	65	mA	No signal
REF input current	IREF	—	3.2	6.0	mA	Speaten filter: MAX
I/O (Output of selector)						
Maximum output amplitude of selector amp	VOM(SEL)	1.8	2.2	—	Vrms	THD = 1%
Output noise level of selector amp.	V _{NO} (SEL)	—	5.5	11	μVrms	Rg = 0 DIN-Audio
Total harmonic distortion of selector amp.	THD(SEL)	—	0.003	0.05	%	f = 1 kHz Vo = 0.5 Vrms DIN-Audio
Cannel separation of selector amp	CS(SEL)	—	-90	-80	dB	f = 1 kHz DIN-Audio
Volume						
Maximum ATT of the main volume	ATT(VOL)	—	-90	-80	dB	ATT(VOL) = -∞
ΔATT of the main volume	ΔATT(VOL)	-2	0	2	dB	ATT(VOL) = 0 dB
I/O (total)						
Maximum input amplitude	VIM	2.0	2.8	—	Vrms	THD = 1%, Speaten filter: OFF VOL = -4 dB ATT = 0 dB
Maximum output amplitude	VOM	1.4	1.8	—	Vrms	THD = 1%, Speaten filter: ON
		1.8	2.2	—	Vrms	THD = 1%, Speaten filter: OFF
Output noise level	V _{NO}	—	100	200	μVrms	VOL = 0 dB ATT = 0 dB Speaten filter: MAX Rg = 0, DIN-Audio
		—	12	24	μVrms	VOL = 0 dB ATT = 0 dB Speaten filter: OFF Rg = 0, DIN-Audio
		—	6.5	13	μVrms	VOL = -∞ ATT = -28 dB Speaten filter: MAX Rg = 0, DIN-Audio
Total harmonic distortion	THD	—	0.01	0.2	%	f = 1 kHz, Loudness = OFF Vo = 0.5 Vrms DIN-Audio
Cannel separation	CS	—	-80	-70	dB	f = 1 kHz DIN-Audio
Tone control						
Value of bass boost	G(BASS)B	9	12	15	dB	f = 100 Hz
Value of bass cut	G(BASS)C	-15	-12	-9	dB	f = 100 Hz
Value of treble boost	G(TRE)B	9	12	15	dB	f = 10 kHz
Value of treble boost	G(TRE)C	-15	-12	-9	dB	f = 10 kHz
Bass boost						
Gain of bass boost	GBB	6.5	8.5	10.5	dB	f = 100 Hz

Test Circuit

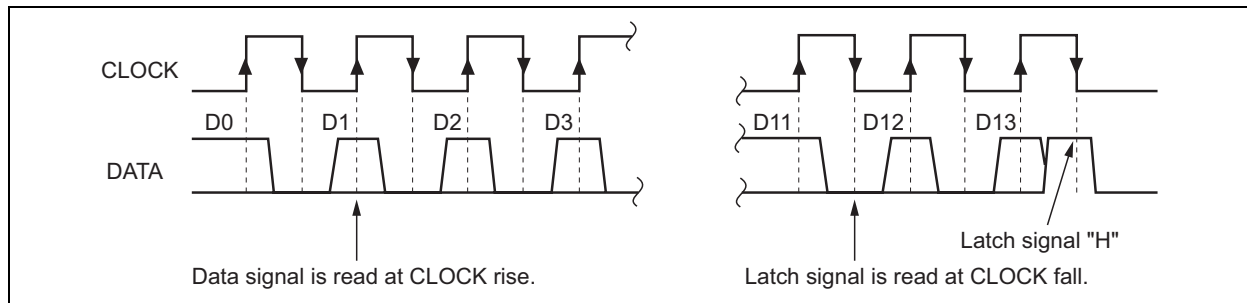
(ICC, ATT(VOL), Delta ATT(VOL), G(BASS)B, G(BASS)C, G(TRE)B, G(TRE)C, VOM, VNO, THD, CS)



Switch Condition

Item	Symbol	Switch condition					
		S3	S12	S37	S46	S50	S63
Circuit current	ICC	1	1	1	1	1	1
REF input current	IREF	1	1	1	1	1	1
Maximum output amplitude of selector amp.	VOM(SEL)	2	2	2	2	2	2
Output noise level of selector amp.	V _{No} (SEL)	↓	↓	↓	↓	↓	↓
Total harmonic distortion of selector amp.	THD(SEL)	↓	↓	↓	↓	↓	↓
Cannel separation of selector amp.	CS(SEL)	↓	↓	↓	↓	↓	↓
Maximum ATT of the main volume	ATT(VOL)	↓	↓	↓	↓	↓	↓
ΔATT of the main volume	ΔATT(VOL)	2	2	2	2	2	2
Maximum input amplitude	VIM	1	1	1	1	1	1
Maximum output amplitude	VOM	↓	↓	↓	↓	↓	↓
Output noise level	V _{No}	↓	↓	↓	↓	↓	↓
Total harmonic distortion	THD	↓	↓	↓	↓	↓	↓
Cannel separation	CS	1	1	1	1	1	1
Value of bass boost	G(BASS)B	2	2	2	2	2	2
Value of bass cut	G(BASS)C	↓	↓	↓	↓	↓	↓
Value of treble boost	G(TRE)B	↓	↓	↓	↓	↓	↓
Value of treble boost	G(TRE)C	↓	↓	↓	↓	↓	↓
Gain of bass boost	GBB	2	2	2	2	2	2

Relationships Between Data and Clock



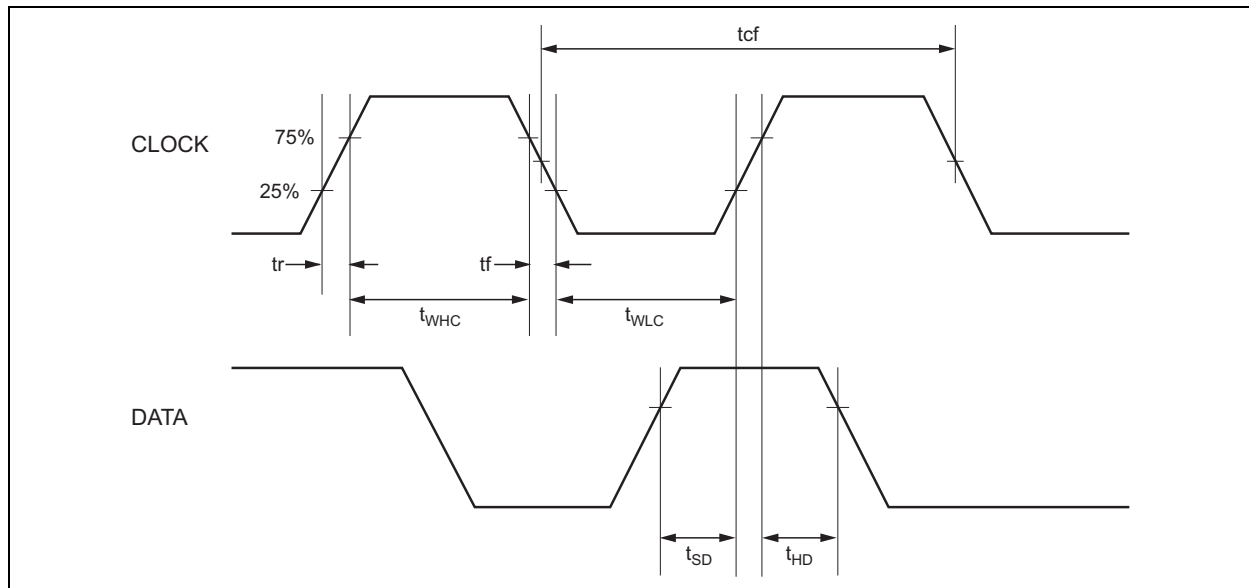
Digital Block Alternating Current

Item	Symbol	Limits			Unit	Conditions
		Min	Typ	Max		
Input voltage (L level)	V _{IL}	0	—	0.2 V _{DD}	V	DATA and CLOCK pins
Input voltage (H level)	V _{IH}	0.8 V _{DD}	—	V _{DD}		
Input current (L level)	I _{IL}	-10	—	10	μA	DATA and CLOCK pins
Input current (H level)	I _{IH}	—	—	10		

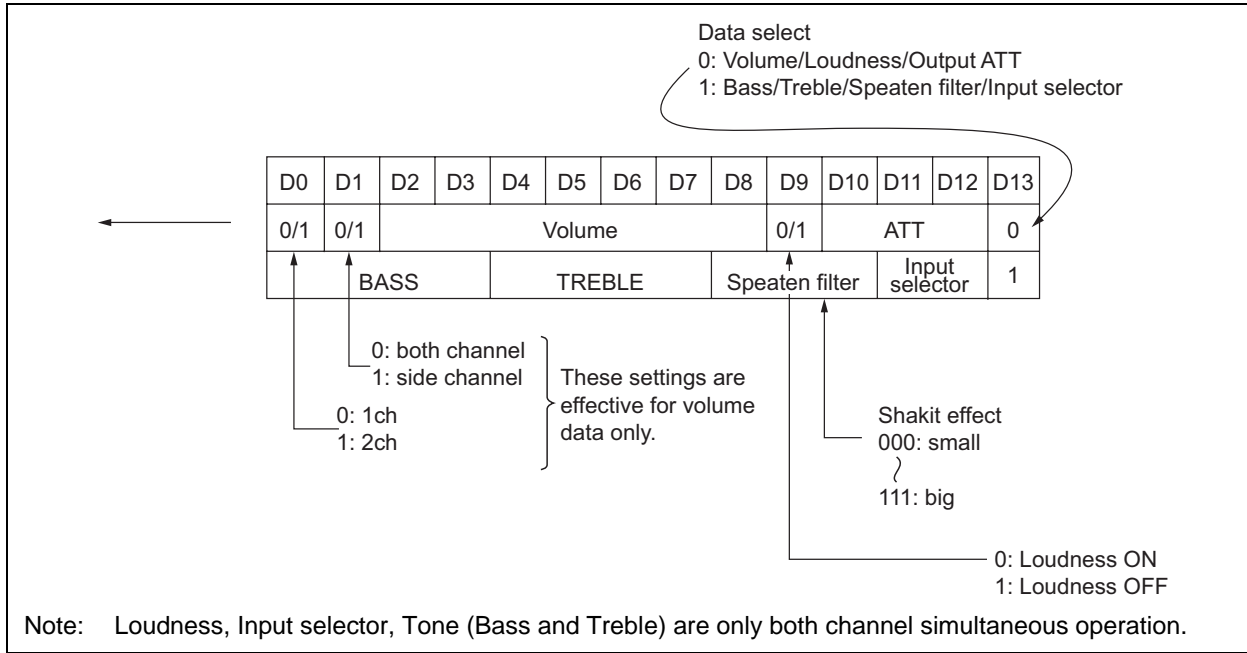
Digital Block Direct Current

Item	Symbol	Limits			Unit
		Min	Typ	Max	
CLOCK cycle time	t _{cf}	4	—	—	μs
CLOCK pulse width (H level)	t _{WHC}	1.6	—	—	
CLOCK pulse width (L level)	t _{WLC}	1.6	—	—	
CLOCK rise time	t _r	—	—	0.4	
CLOCK fall time	t _f	—	—	0.4	
DATA setup time	t _{SD}	0.8	—	—	
DATA hold time	t _{HD}	0.8	—	—	

Clock and Data Timing



Data Format



Data Select: 0

Volume Code

ATT1	D2	D3	D4	D5	D6
0 dB	H	L	H	L	H
-4 dB	L	L	H	L	H
-8 dB	H	H	L	L	H
-12 dB	L	H	L	L	H
-16 dB	H	L	L	L	H
-20 dB	L	L	L	L	H
-24 dB	H	H	H	H	L
-28 dB	L	H	H	H	L
-32 dB	H	L	H	H	L
-36 dB	L	L	H	H	L
-40 dB	H	H	L	H	L
-44 dB	L	H	L	H	L
-48 dB	H	L	L	H	L
-52 dB	L	L	L	H	L
-56 dB	H	H	H	L	L
-60 dB	L	H	H	L	L
-64 dB	H	L	H	L	L
-68 dB	L	L	H	L	L
-72 dB	H	H	L	L	L
-76 dB	L	H	L	L	L
-80 dB	H	L	L	L	L
-∞	L	L	L	L	L

ATT2	D7	D8
0dB	H	H
-1dB	L	H
-2dB	H	L
-3dB	L	L

Output ATT Code

Output ATT	D10	D11	D12
0 dB	H	H	H
-4 dB	H	H	L
-8 dB	H	L	H
-12 dB	H	L	L
-16 dB	L	H	H
-20 dB	L	H	L
-24 dB	L	L	H
-28 dB	L	L	L

Data Select: 1

Tone Code

Buss	D0	D1	D2	D3
Treble	D4	D5	D6	D7
12 dB	H	H	H	H
10 dB	L	H	H	H
8 dB	H	L	H	H
6 dB	L	L	H	H
4 dB	H	H	L	H
2 dB	L	H	L	H
0 dB	H	L	L	H
-2 dB	L	L	L	H
-4 dB	H	H	H	L
-6 dB	L	H	H	L
-8 dB	H	L	H	L
-10 dB	L	L	H	L
-12 dB	H	H	L	L

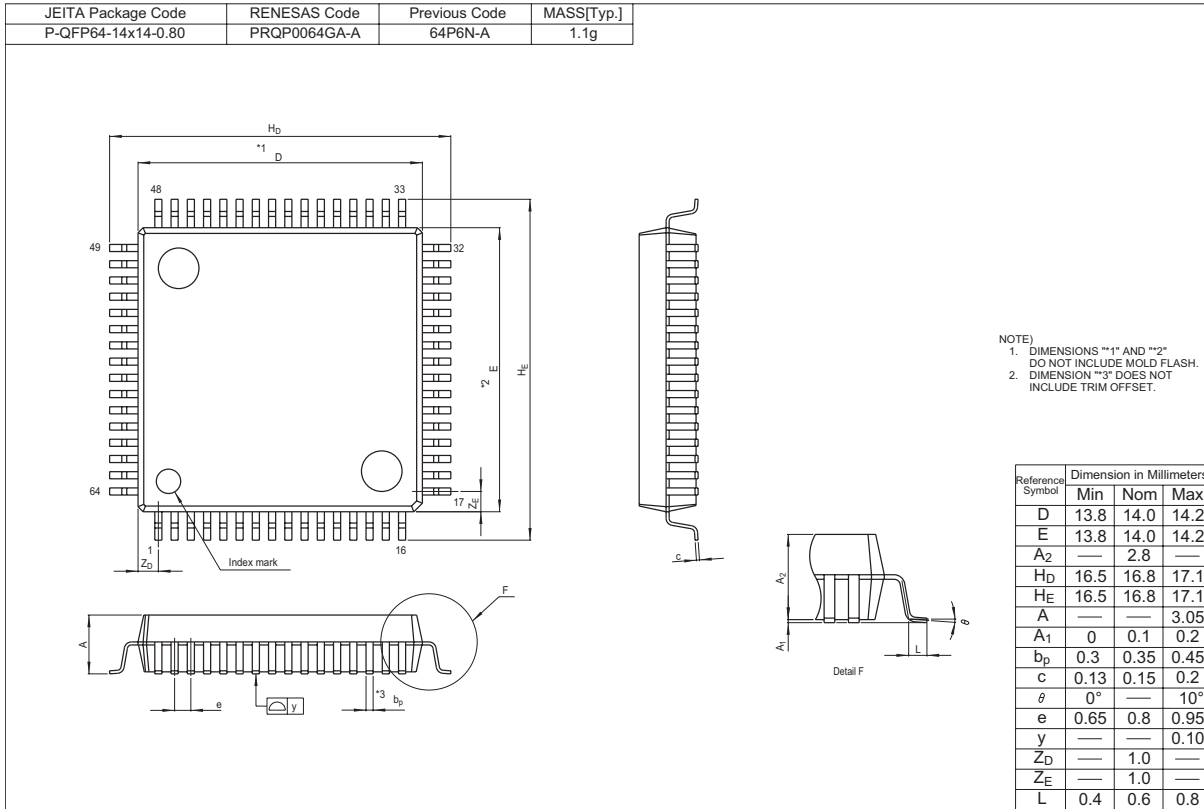
Speaten Filter Effect, X-BASS ON/OFF Code

Effect NF Reistor	X-BASS ON/OFF	SHAKIT ON/PASS	D8	D9	D10
189 Ω	OFF	ON	H	H	H
267 Ω	OFF	ON	L	H	H
378 Ω	OFF	ON	H	L	H
533 Ω	OFF	ON	L	L	H
754 Ω	OFF	ON	H	H	L
50 k Ω	OFF	ON	L	H	L
50 k Ω	OFF	PASS	H	L	L
50 k Ω	ON	PASS	L	L	L

Input Selector Code

Input Selector	D11	D12
A CH	H	H
B CH	L	H
C CH	H	L
D CH	L	L

Package Dimensions



Notes:

1. This document is provided for reference purposes only so that Renesas customers may select the appropriate Renesas products for their use. Renesas neither makes warranties or representations with respect to the accuracy or completeness of the information contained in this document nor grants any license to any intellectual property rights or any other rights of Renesas or any third party with respect to the information in this document.
2. Renesas shall have no liability for damages or infringement of any intellectual property or other rights arising out of the use of any information in this document, including, but not limited to, product data, diagrams, charts, programs, algorithms, and application circuit examples.
3. You should not use the products or the technology described in this document for the purpose of military applications such as the development of weapons of mass destruction or for the purpose of any other military use. When exporting the products or technology described herein, you should follow the applicable export control laws and regulations, and procedures required by such laws and regulations.
4. All information included in this document such as product data, diagrams, charts, programs, algorithms, and application circuit examples, is current as of the date this document is issued. Such information, however, is subject to change without any prior notice. Before purchasing or using any Renesas products listed in this document, please confirm the latest product information with a Renesas sales office. Also, please pay regular and careful attention to additional and different information to be disclosed by Renesas such as that disclosed through our website. (<http://www.renesas.com>)
5. Renesas has used reasonable care in compiling the information included in this document, but Renesas assumes no liability whatsoever for any damages incurred as a result of errors or omissions in the information included in this document.
6. When using or otherwise relying on the information in this document, you should evaluate the information in light of the total system before deciding about the applicability of such information to the intended application. Renesas makes no representations, warranties or guarantees regarding the suitability of its products for any particular application and specifically disclaims any liability arising out of the application and use of the information in this document or Renesas products.
7. With the exception of products specified by Renesas as suitable for automobile applications, Renesas products are not designed, manufactured or tested for applications or otherwise in systems the failure or malfunction of which may cause a direct threat to human life or create a risk of human injury or which require especially high quality and reliability such as safety systems, or equipment or systems for transportation and traffic, healthcare, combustion control, aerospace and aeronautics, nuclear power, or undersea communication transmission. If you are considering the use of our products for such purposes, please contact a Renesas sales office beforehand. Renesas shall have no liability for damages arising out of the uses set forth above.
8. Notwithstanding the preceding paragraph, you should not use Renesas products for the purposes listed below:
 - (1) artificial life support devices or systems
 - (2) surgical implantations
 - (3) healthcare intervention (e.g., excision, administration of medication, etc.)
 - (4) any other purposes that pose a direct threat to human lifeRenesas shall have no liability for damages arising out of the uses set forth in the above and purchasers who elect to use Renesas products in any of the foregoing applications shall indemnify and hold harmless Renesas Technology Corp., its affiliated companies and their officers, directors, and employees against any and all damages arising out of such applications.
9. You should use the products described herein within the range specified by Renesas, especially with respect to the maximum rating, operating supply voltage range, movement power voltage range, heat radiation characteristics, installation and other product characteristics. Renesas shall have no liability for malfunctions or damages arising out of the use of Renesas products beyond such specified ranges.
10. Although Renesas endeavors to improve the quality and reliability of its products, IC products have specific characteristics such as the occurrence of failure at a certain rate and malfunctions under certain use conditions. Please be sure to implement safety measures to guard against the possibility of physical injury, and injury or damage caused by fire in the event of the failure of a Renesas product, such as safety design for hardware and software including but not limited to redundancy, fire control and malfunction prevention, appropriate treatment for aging degradation or any other applicable measures. Among others, since the evaluation of microcomputer software alone is very difficult, please evaluate the safety of the final products or system manufactured by you.
11. In case Renesas products listed in this document are detached from the products to which the Renesas products are attached or affixed, the risk of accident such as swallowing by infants and small children is very high. You should implement safety measures so that Renesas products may not be easily detached from your products. Renesas shall have no liability for damages arising out of such detachment.
12. This document may not be reproduced or duplicated, in any form, in whole or in part, without prior written approval from Renesas.
13. Please contact a Renesas sales office if you have any questions regarding the information contained in this document, Renesas semiconductor products, or if you have any other inquiries.



RENESAS SALES OFFICES

<http://www.renesas.com>

Refer to "<http://www.renesas.com/en/network>" for the latest and detailed information.

Renesas Technology America, Inc.

450 Holger Way, San Jose, CA 95134-1368, U.S.A
Tel: <1> (408) 382-7500, Fax: <1> (408) 382-7501

Renesas Technology Europe Limited

Dukes Meadow, Millboard Road, Bourne End, Buckinghamshire, SL8 5FH, U.K.
Tel: <44> (1628) 585-100, Fax: <44> (1628) 585-900

Renesas Technology (Shanghai) Co., Ltd.

Unit 204, 205, AZIA Center, No.1233 Lujiazui Ring Rd, Pudong District, Shanghai, China 200120
Tel: <86> (21) 5877-1818, Fax: <86> (21) 6887-7858/7898

Renesas Technology Hong Kong Ltd.

7th Floor, North Tower, World Finance Centre, Harbour City, Canton Road, Tsimshatsui, Kowloon, Hong Kong
Tel: <852> 2265-6688, Fax: <852> 2377-3473

Renesas Technology Taiwan Co., Ltd.

10th Floor, No.99, Fushing North Road, Taipei, Taiwan
Tel: <886> (2) 2715-2888, Fax: <886> (2) 3518-3399

Renesas Technology Singapore Pte. Ltd.

1 Harbour Front Avenue, #06-10, Keppel Bay Tower, Singapore 098632
Tel: <65> 6213-0200, Fax: <65> 6278-8001

Renesas Technology Korea Co., Ltd.

Kukje Center Bldg, 18th Fl., 191, 2-ka, Hangang-ro, Yongsan-ku, Seoul 140-702, Korea
Tel: <82> (2) 796-3115, Fax: <82> (2) 796-2145

Renesas Technology Malaysia Sdn. Bhd

Unit 906, Block B, Menara Amcorp, Amcorp Trade Centre, No.18, Jln Persiaran Barat, 46050 Petaling Jaya, Selangor Darul Ehsan, Malaysia
Tel: <603> 7955-9390, Fax: <603> 7955-9510