

# AN7124

## Dual 3.1 W Audio Power Amplifier

### Overview

The AN7124 is a monolithic integrated circuit designed for dual audio power amplifier of portable radio cassette.

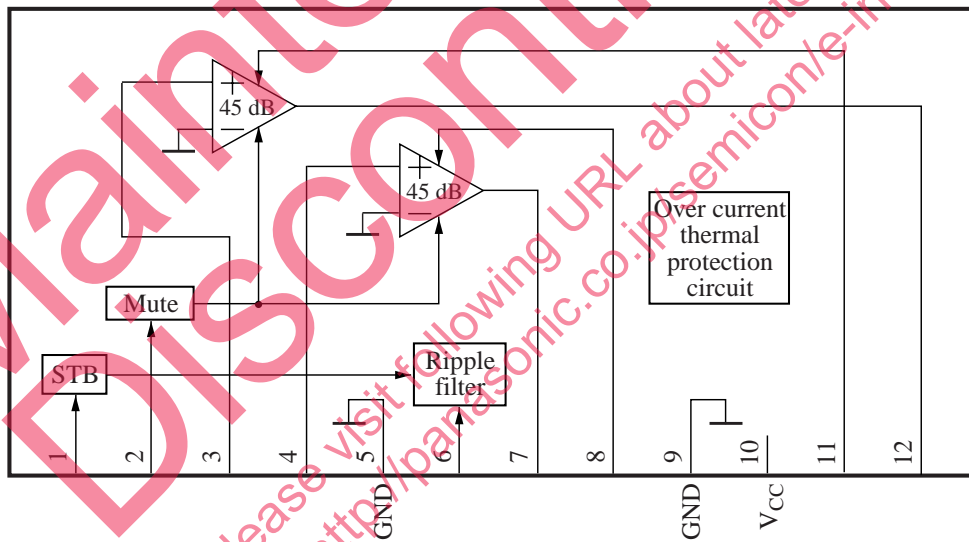
### Features

- Audio output : 3.1 W × 2 channel
- Built-in standby and muting circuit
- Built-in thermal shut down protection circuit
- Low pop noise during standby and mute ON/OFF
- No negative feedback pin

### Applications

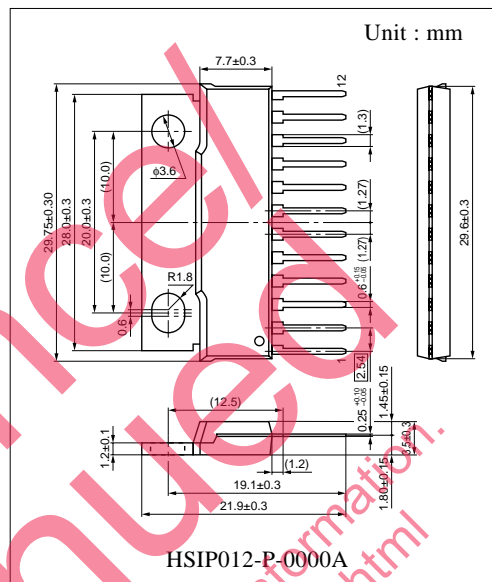
- Radio-cassette

### Block Diagram



### Pin Descriptions

Pin No.	Description	Pin No.	Description
1	Stand-by	7	ch.1 output
2	Muting	8	ch.1 bootstrap
3	ch.2 input	9	Output GND
4	ch.1 input	10	V <sub>CC</sub>
5	Input GND	11	ch.2 bootstrap
6	Ripple filter	12	ch.2 output



### ■ Absolute Maximum Ratings

Parameter	Symbol	Rating	Unit
Supply voltage	$V_{CC}$	24	V
Supply current	$I_{CC}$	4.0	A
Power dissipation	$P_D$	37.5	W
Operating ambient temperature	$T_{opr}$	-25 to +75	°C
Storage temperature	$T_{stg}$	-55 to +150	°C

### ■ Recommended Operating Range

Parameter	Symbol	Range	Unit
Supply voltage	$V_{CC}$	6.0 to 18.0	V

### ■ Electrical Characteristics at $V_{CC} = 12\text{ V}$ , $R_L = 3\ \Omega$ , $f = 1\text{ kHz}$ , $T_a = 25\text{ °C}$

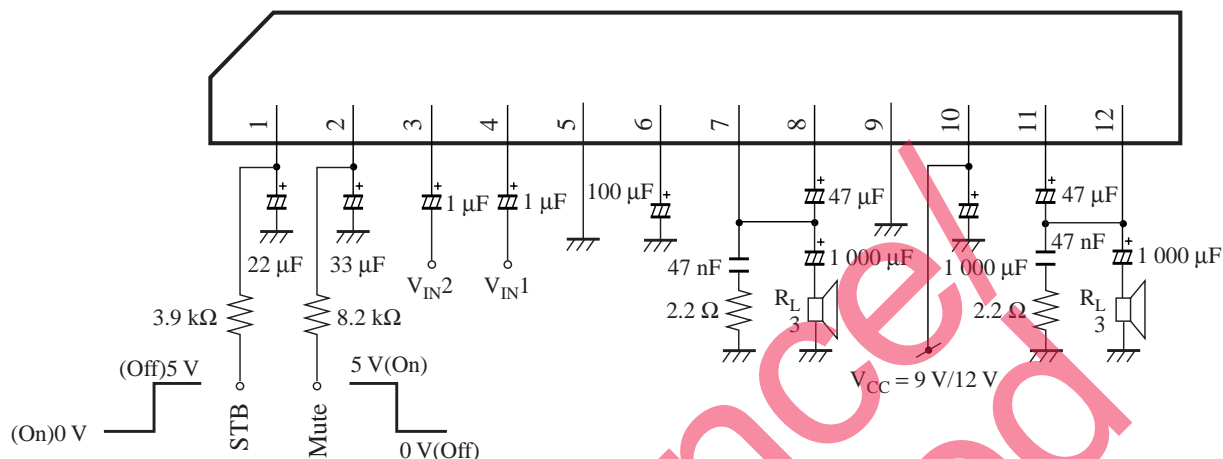
Parameter	Symbol	Conditions	Min	Typ	Max	Unit
Quiescent current	$I_{CQ}$	$V_{IN} = 0\text{ mV}$	12	19	26	mA
Output noise voltage *1	$V_{NO}$	$V_{IN} = 0\text{ mV}$ , $P_G = 10\text{ k}\Omega$	—	0.27	0.5	mVrms
Voltage gain	$G_V$	$V_{IN} = 3\text{ mV}$	43	45	47	dB
Total harmonic distortion *2	THD	$V_{IN} = 3\text{ mV}$	—	0.05	0.5	%
Maximum output 1	$P_{O1}$	THD = 10 %	4.3	5.0	—	W
Channel balance	CB	$V_{IN} = 3\text{ mV}$	-1	0	1	dB
Ripple rejection *1	RR	$R_G = 0\ \Omega$ , $V_R = 280\text{ mVrms}$ , $f_R = 120\text{ Hz}$	45	50	—	dB
Standby current	$I_{STB}$	$V_{IN} = 0\text{ mV}$	—	1	10	$\mu\text{A}$
Muting effects *1	Mut	$V_{IN} = 10\text{ mV}$	60	80	—	dB
Maximum output 2 *3	$P_{O2}$	THD = 10 %, $V_{CC} = 9\text{ V}$	2.5	3.0	—	W
Crosstalk *1,*3	CT	$R_G = 10\text{ k}\Omega$ , $V_{IN} = 10\text{ mV}$ , $f = 1\text{ kHz}$	50	64	—	dB

Note) \*1 : With a filter band from 20 Hz to 20 kHz (12 dB/OCT) used.

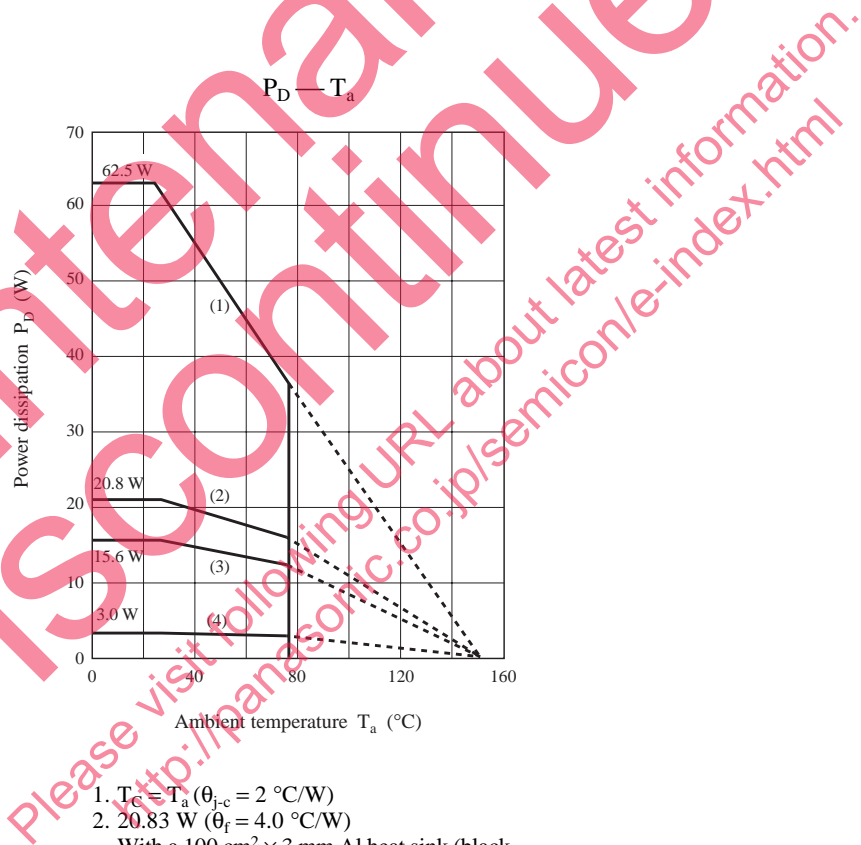
\*2 : With a filter band from 400 Hz to 30 kHz used.

\*3 : Reference data for design.

■ Application Circuit Example



■ Characteristics Curve

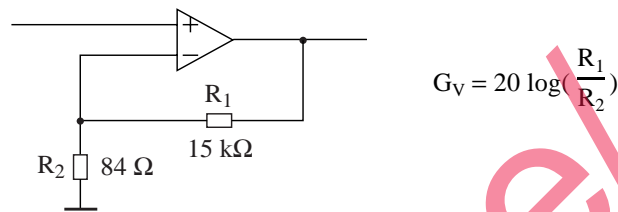


1.  $T_c = T_a$  ( $\theta_{j-c} = 2 \text{ }^\circ\text{C/W}$ )
2. 20.83 W ( $\theta_f = 4.0 \text{ }^\circ\text{C/W}$ )  
With a 100 cm<sup>2</sup> × 3 mm Al heat sink (black colour coated) or a 200 cm<sup>2</sup> × 2 mm Al heat sink (not lacquered)
3. 15.63 W ( $\theta_f = 6.0 \text{ }^\circ\text{C/W}$ )  
With a 100 cm<sup>2</sup> × 2 mm Al heat sink(not lacquered)
4. 3.0 W at  $T_a = 25 \text{ }^\circ\text{C}$  ( $\theta_{j-a} = 42 \text{ }^\circ\text{C/W}$ )  
Without heat sink

## ■ Application Note

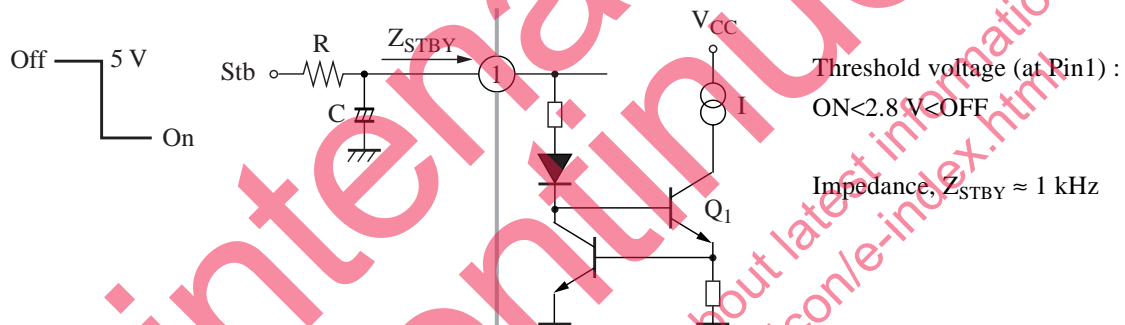
### 1. Voltage gain

The close loop gain of AN7124 is fixed at 45 dB(typ.)



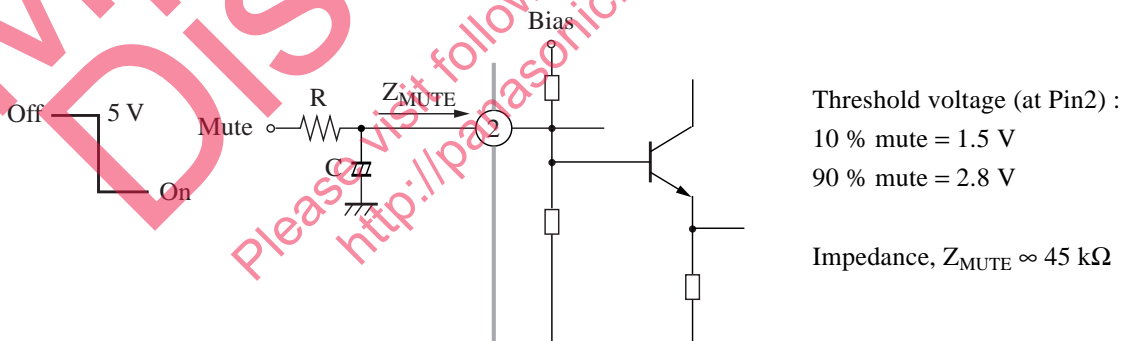
### 2. Standby function

Standby is ON when Pin1 is set to "L". By applying a 5 V to the standby pin, transistor Q1 will be turned ON to provide a constant current (I) for driving other parts of the circuit. The RC is to create a TIME CONSTANT for the standby pulse during charging and discharging.



### 3. Muting

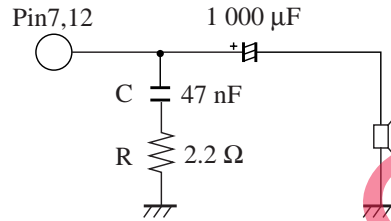
By controlling Pin2 from "H" to "L", the mute function is set from ON to OFF. When Pin2 is floating, DC  $\approx 0.02$  V. The threshold is set  $\approx 2.8$  V. The RC is to create a TIME CONSTANT for the mute pulse during charging and discharging.



■ Application Note (continued)

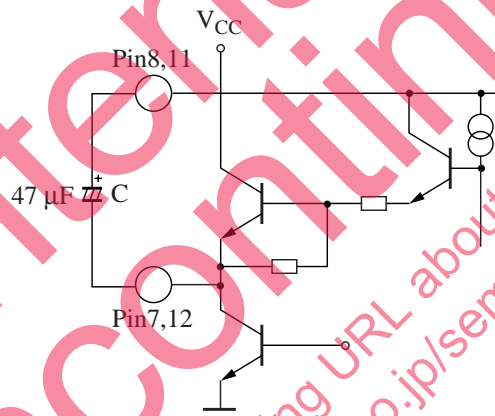
4.Oscillation

To prevent oscillation, it is advisable to use C (Zobel network capacitor). Using polyester film capacitor has small characteristic fluctuation with temperature and the frequency.The resistor R connected in series with C is effective for phase correction at high frequency, as a result, it improves the oscillation allowance.



5.Bootstrap

The capacitor C connected between the output and bootstrap pin helps to increase the output dynamic range and hence increases the output power of the IC.



Maintenance/Discontinued

Please visit following URL about latest information.  
<http://panasonic.co.jp/semicon/e-index.html>

## Request for your special attention and precautions in using the technical information and semiconductors described in this book

- (1) If any of the products or technical information described in this book is to be exported or provided to non-residents, the laws and regulations of the exporting country, especially, those with regard to security export control, must be observed.
- (2) The technical information described in this book is intended only to show the main characteristics and application circuit examples of the products, and no license is granted under any intellectual property right or other right owned by our company or any other company. Therefore, no responsibility is assumed by our company as to the infringement upon any such right owned by any other company which may arise as a result of the use of technical information described in this book.
- (3) The products described in this book are intended to be used for standard applications or general electronic equipment (such as office equipment, communications equipment, measuring instruments and household appliances).  
Consult our sales staff in advance for information on the following applications:
  - Special applications (such as for airplanes, aerospace, automobiles, traffic control equipment, combustion equipment, life support systems and safety devices) in which exceptional quality and reliability are required, or if the failure or malfunction of the products may directly jeopardize life or harm the human body.
  - Any applications other than the standard applications intended.
- (4) The products and product specifications described in this book are subject to change without notice for modification and/or improvement. At the final stage of your design, purchasing, or use of the products, therefore, ask for the most up-to-date Product Standards in advance to make sure that the latest specifications satisfy your requirements.
- (5) When designing your equipment, comply with the range of absolute maximum rating and the guaranteed operating conditions (operating power supply voltage and operating environment etc.). Especially, please be careful not to exceed the range of absolute maximum rating on the transient state, such as power-on, power-off and mode-switching. Otherwise, we will not be liable for any defect which may arise later in your equipment.
  - Even when the products are used within the guaranteed values, take into the consideration of incidence of break down and failure mode, possible to occur to semiconductor products. Measures on the systems such as redundant design, arresting the spread of fire or preventing glitch are recommended in order to prevent physical injury, fire, social damages, for example, by using the products.
- (6) Comply with the instructions for use in order to prevent breakdown and characteristics change due to external factors (ESD, EOS, thermal stress and mechanical stress) at the time of handling, mounting or at customer's process. When using products for which damp-proof packing is required, satisfy the conditions, such as shelf life and the elapsed time since first opening the packages.
- (7) This book may be not reprinted or reproduced whether wholly or partially, without the prior written permission of Matsushita Electric Industrial Co., Ltd.