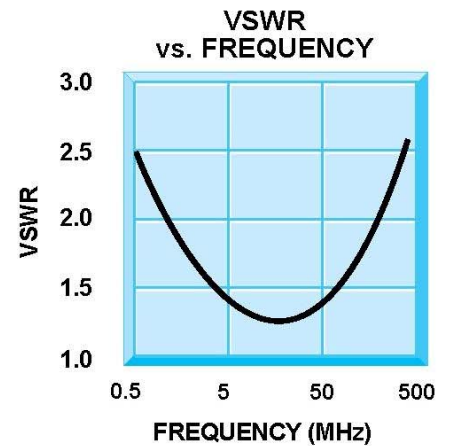
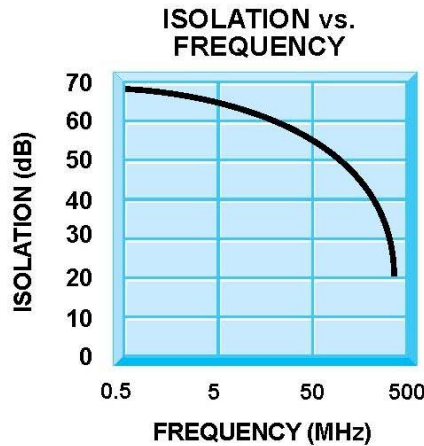
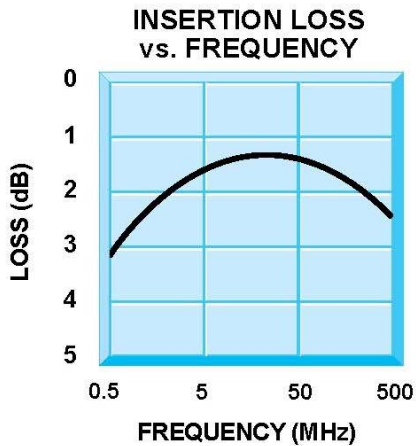




ISD-9110 SERIES (SPST) BALANCED PIN DIODE SWITCHES WITH INTEGRAL DRIVERS

ISD-9110 Series (SPST)

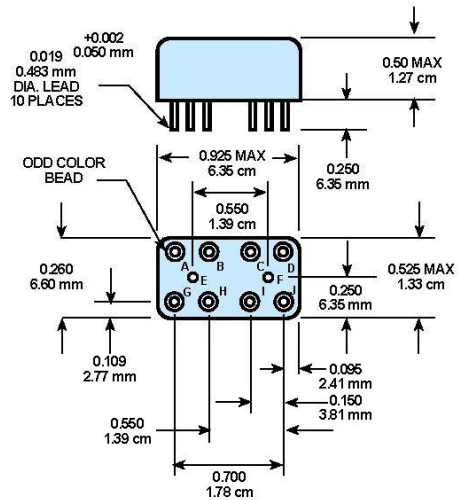
Balanced Pin Diode Switches with Integral Drivers



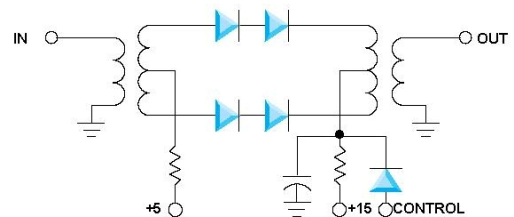
Guaranteed Specifications (-54° to +85°C)

Frequency Range	0.5 to 200 MHz 2 to 100 MHz 20 to 400 MHz
Isolation	45 dB Min.
Insertion Loss	2.0 dB Min.
VSWR	1.5:1 Max.
Switching Speed	200 nanoseconds
Impedance	50 Ohms
DC Power Requirement	+15 V at 15 mA +5 V at 50 mA
Control TTL Logic Level	on state selected by logic level high
Transient Feedthrough	<150 mV Peak
ISD-9110	0.05-200 MHz
ISD-9111	2-100 MHz
ISD-9112	20-400 MHz

Mechanical Outline



Functional Schematic



STC Microwave Systems – www.craneae.com
 28 Tozer Road • Beverly, MA 01915
 phone: 978-524-7200 • email: electronics@craneae.com

Revision ISD-9110 2005 08252005

