

## Features

- QTouch® Sensor Channels
  - Up to 8 keys
- Integrated Haptic Engine
  - Haptic events may be triggered by touch detection or controlled by a host microcontroller over SPI
- Data Acquisition
  - QTouch “Dual Pulse” key measurement/touch detection method
  - Configurable measurement timing and averaging
  - Spread spectrum charge transfer
  - Raw data from channel measurement can be read over the SPI interface
- GPIO Pins
  - 12 dedicated bi-directional GPIO pins, plus up to 4 additional pins (replacing keys)
  - Configurable as software PWM Drive, digital inputs or outputs
- Device setup
  - Device configuration may be stored in NVRAM
- Operation
  - Power-On reset and brown-out detection
  - Internal calibrated oscillator
- Key Outline Sizes
  - 6 mm x 6 mm or larger (panel thickness dependent); widely different sizes and shapes possible, including solid or ring shapes
- Key Spacing
  - 7 mm centre to centre or more (panel thickness dependent)
- Layers required
  - One
- Electrode Materials:
  - Etched copper, silver, carbon, ITO
- Electrode Substrates:
  - PCB materials; polyamide FPCB; PET films, glass
- Panel materials:
  - Plastic, glass, composites, painted surfaces (low particle density metallic paints possible)
- Panel Thickness:
  - Up to 10 mm glass, 5 mm plastic (electrode size dependent)
- Key Sensitivity:
  - Individually configured over SPI interface
- Signal Processing:
  - Self-calibration, auto drift compensation, noise filtering
  - Patented Adjacent Key Suppression® (AKS®) technology to ensure accurate key detection
- Interface:
  - Master/Slave SPI interface, up to 750 kHz
  - Object-based communications protocol
- Power:
  - 2.0V to 5.5V
- Packages:
  - 32-pin 5 x 5 mm MLF RoHS compliant
  - 32-pin 7 x 7mm TQFP RoHS compliant



## QTouch 8-key Touch Sensor IC

**AT42QT1085**

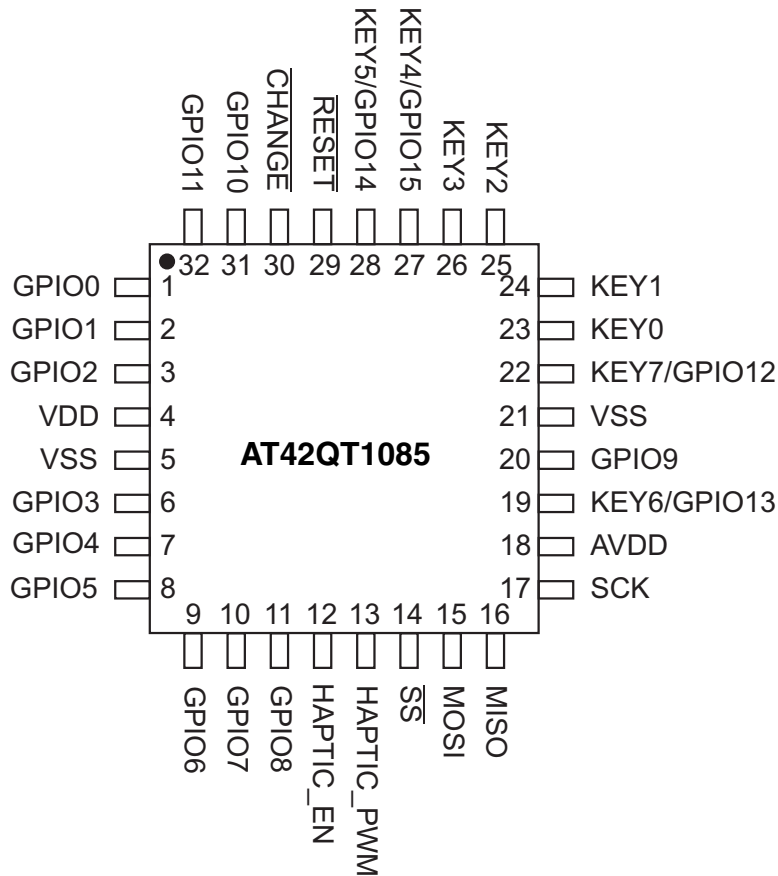
## Summary

9625BSX-AT42-05/11



# 1. Pinout and Schematic

## 1.1 Pinout Configuration



## 1.2 Pinout Descriptions

Table 1-1. Pin Listing

Pin	Name	Type	Comments	If Unused, Connect To...
1	GPIO0	I/O	General Purpose IO	Leave open
2	GPIO1	I/O	General Purpose IO	Leave open
3	GPIO2	I/O	General Purpose IO	Leave open
4	VDD	P	Power	–
5	VSS	P	Ground	–
6	GPIO3	I/O	General Purpose IO	Leave open
7	GPIO4	I/O	General Purpose IO	Leave open
8	GPIO5	I/O	General Purpose IO	Leave open
9	GPIO6	I/O	General Purpose IO	Leave open
10	GPIO7	I/O	General Purpose IO	Leave open
11	GPIO8	I/O	General Purpose IO	Leave open

**Table 1-1.** Pin Listing (Continued)

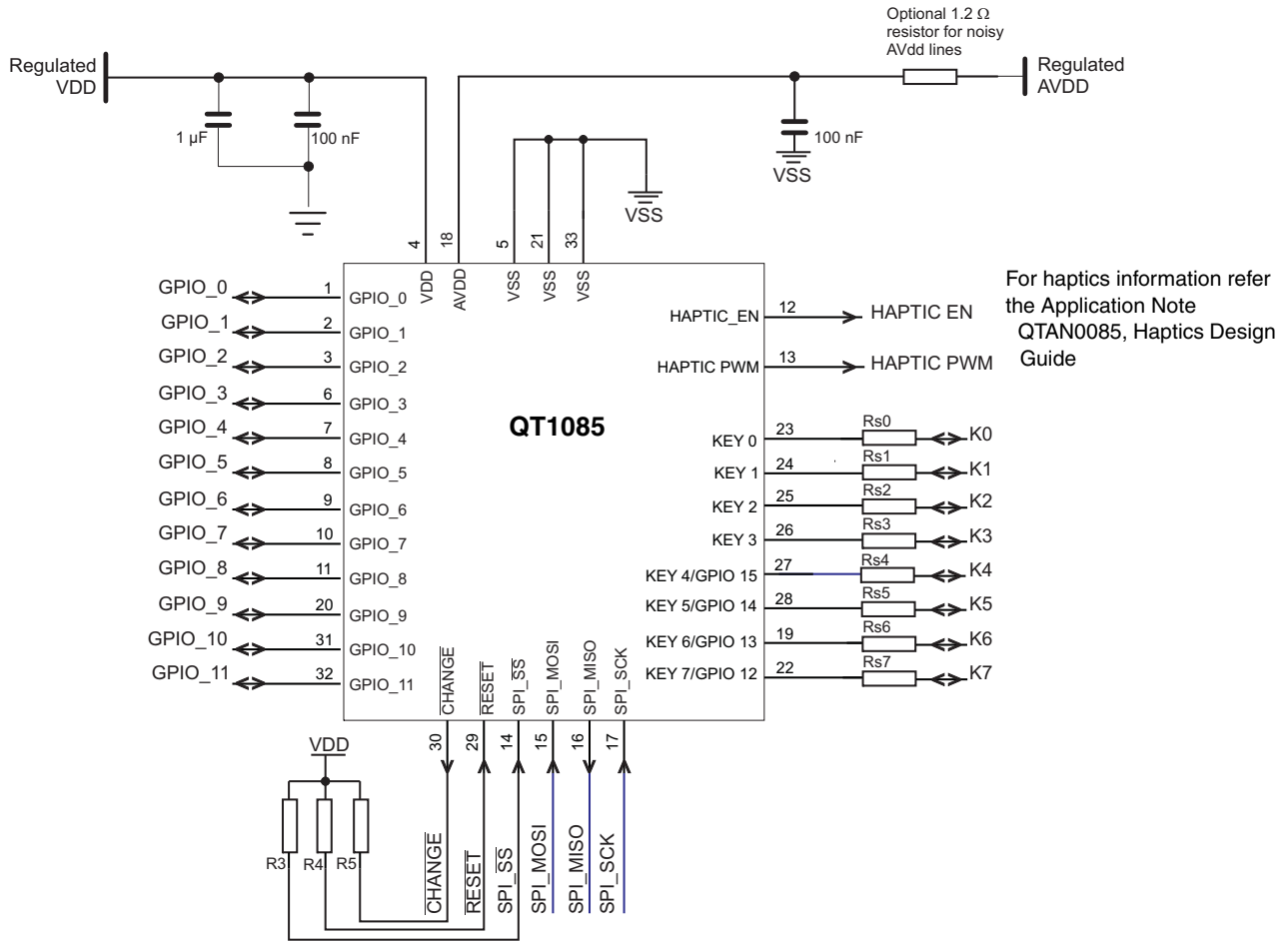
Pin	Name	Type	Comments	If Unused, Connect To...
12	HAPTIC_EN	O	Enable pin for haptic amplifier	Leave open
13	HAPTIC_PWM	O	Drive for haptic effects	Leave open
14	$\overline{SS}$	I	SPI Enable	Leave open
15	MOSI	I	SPI Data In	Leave open
16	MISO	O	SPI Data Out	Leave open
17	SCK	I	SPI Clock	Leave open
18	AVDD	P	Analog Power	–
19	KEY6/GPIO13	I/O	Sense pin/General Purpose IO	Leave open
20	GPIO 9	I/O	General purpose IO	Leave open
21	VSS	P	Ground	–
22	KEY7/GPIO12	I/O	Sense pin/General Purpose IO	Leave open
23	KEY0	I/O	Sense pin	Leave open
24	KEY1	I/O	Sense pin	Leave open
25	KEY2	I/O	Sense pin	Leave open
26	KEY3	I/O	Sense pin	Leave open
27	KEY4/GPIO15	I/O	Sense pin/General Purpose IO	Leave open
28	KEY5/GPIO14	I/O	Sense pin/General Purpose IO	Leave open
29	$\overline{RESET}$	I	Reset, internal pull-up	Leave open
30	$\overline{CHANGE}$	OD	Status change indicator	Leave open
31	GPIO10	I/O	General Purpose IO	Leave open
32	GPIO11	I/O	General Purpose IO	Leave open

I Input only                      O Output only, push-pull                      I/O Input/output  
 OD Open drain output                      P Ground or power

### 1.3 Schematic

Figure 1-1. Typical Circuit

Pin 33 is the pad on the underside of the device which should be connected to Vss.



## 2. Overview

### 2.1 Introduction

The AT42QT1085 (QT1085) is an easy to use dual-pulse mode sensor IC based on Atmel principles for robust operation and ease of design. It is intended for any touch-key application.

The QT1085 is capable of detecting near-proximity or touch on up to eight sensor channels, configured as keys, and 12 dedicated GPIO channels. Four additional GPIO channels can be configured by replacing four of the sensor channels (one per channel).

The keys can be constructed in different shapes and sizes. Refer to the *Touch Sensors Design Guide* and Application Note QTAN0002, *Secrets of a Successful QTouch® Design*, for more information on construction and design methods (both downloadable from the Atmel® website).

Each GPIO channel may be configured as a digital input or output. In output mode, a GPIO pin may be set to output a PWM signal at any of 16 duty cycles (4-bit PWM). The QT1085 allows electrodes to project sense fields through any dielectric such as glass or plastic.

This device has many advanced features which provide for reliable, trouble-free operation over the life of the product. In particular the QT1085 features advanced self-calibration, drift compensation, and fast thermal tracking. The QT1085 can tolerate some fluctuations in the power supply, and in many applications will not require a dedicated voltage regulator.

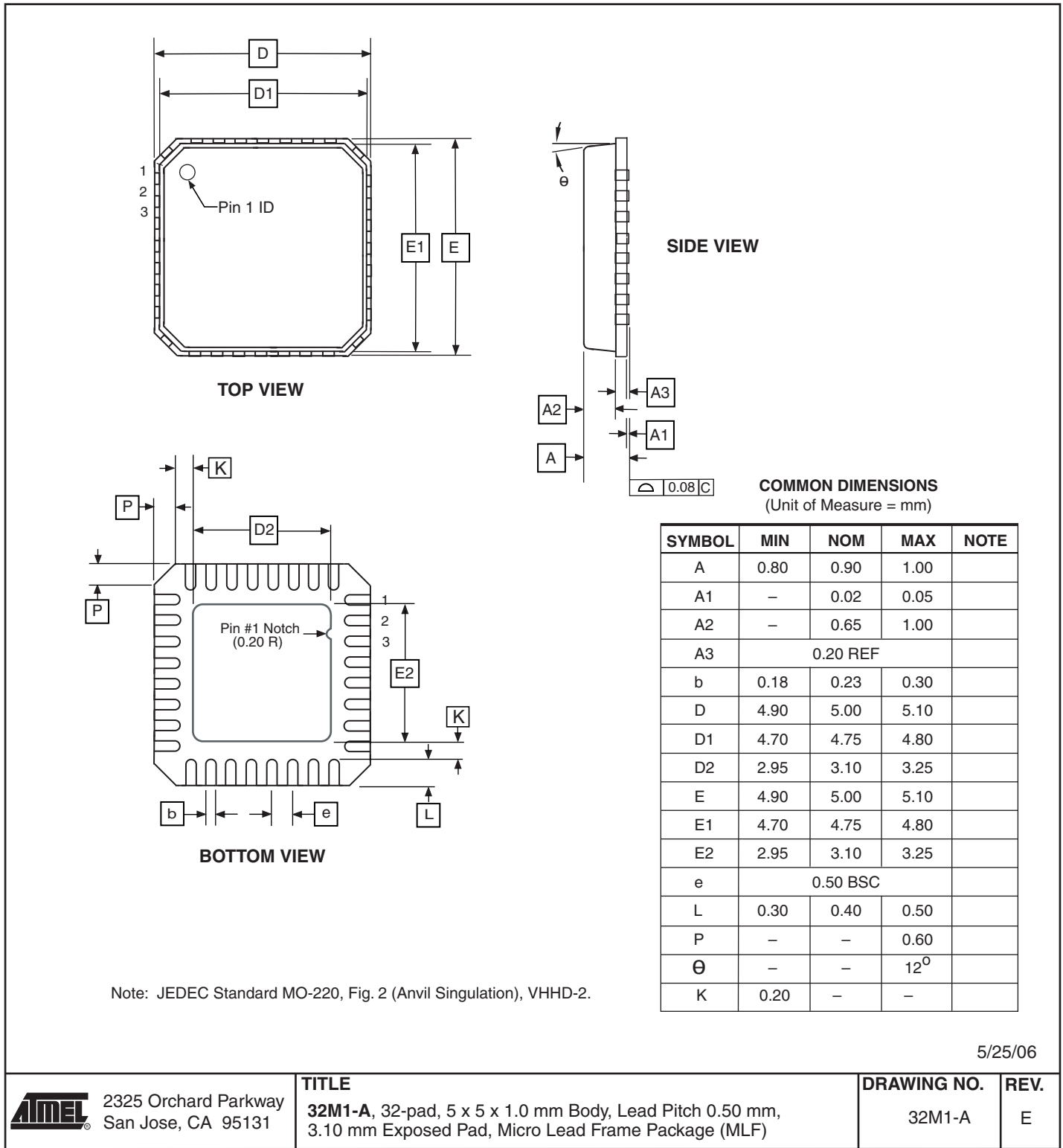
A full haptics engine is integrated into the device, allowing feedback effects to be triggered on key detection or directly activated by a host microcontroller.

The QT1085 includes all signal processing functions necessary to provide stable sensing under a wide variety of changing conditions. Only a few external parts are required for operation and no external Cs capacitors are required.

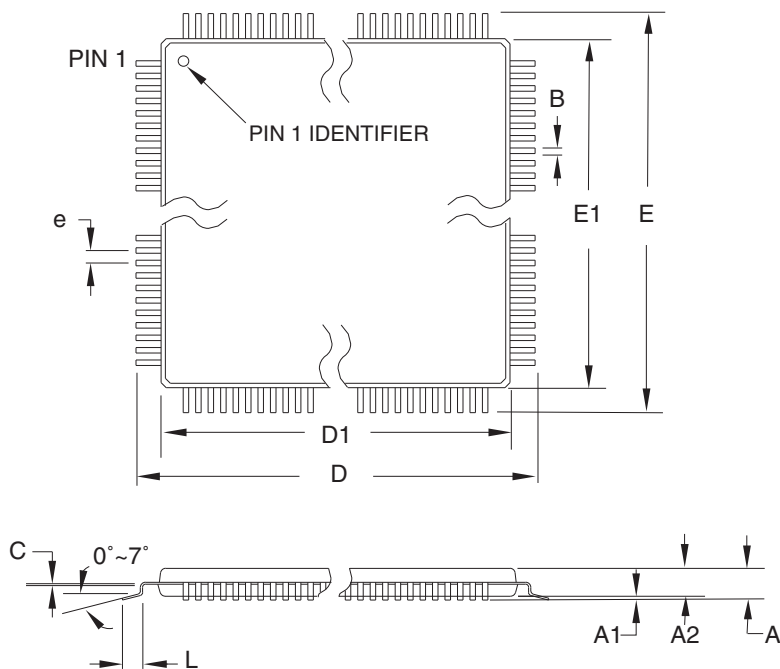
The QT1085 modulates its acquisition pulses in a spread-spectrum fashion in order to heavily suppress the effects of external noise, and to suppress RF emissions. The QT1085 uses a dual-pulse method of acquisition. This provides greater noise immunity and eliminates the need for external sampling capacitors, allowing touch sensing using a single pin.

## 2.2 Mechanical Dimensions

### 2.2.1 32-pin 5 x 5 mm MLF



## 2.2.2 32-pin 7 x 7mm TQFP



**COMMON DIMENSIONS**  
(Unit of Measure = mm)

SYMBOL	MIN	NOM	MAX	NOTE
A	-	-	1.20	
A1	0.05	-	0.15	
A2	0.95	1.00	1.05	
D	8.75	9.00	9.25	
D1	6.90	7.00	7.10	Note 2
E	8.75	9.00	9.25	
E1	6.90	7.00	7.10	Note 2
B	0.30	-	0.45	
C	0.09	-	0.20	
L	0.45	-	0.75	
e	0.80 TYP			

- Notes:
1. This package conforms to JEDEC reference MS-026, Variation ABA.
  2. Dimensions D1 and E1 do not include mold protrusion. Allowable protrusion is 0.25 mm per side. Dimensions D1 and E1 are maximum plastic body size dimensions including mold mismatch.
  3. Lead coplanarity is 0.10 mm maximum.

10/5/2001



2325 Orchard Parkway  
San Jose, CA 95131

**TITLE**

**32A**, 32-lead, 7 x 7 mm Body Size, 1.0 mm Body Thickness,  
0.8 mm Lead Pitch, Thin Profile Plastic Quad Flat Package (TQFP)

**DRAWING NO.**

32A

**REV.**

B



## 2.3 Part Numbers

Part Number	Description
AT42QT1085X-MU	32-pin 5 x 5 mm MLF RoHS compliant
AT42QT1085X-AU	32-pin 7 x 7mm TQFP RoHS compliant

**Note:** "X" in the part number before the hyphen (-) denotes a preliminary chip. This is removed on release, so the part number will be as given but with the "X" removed.



## Revision History

Revision Number	History
Revision ASX – April 2011	Initial release of summary document.
Revision BSX – May 2011	Change to TQFP part number.



## Headquarters

---

### **Atmel Corporation**

2325 Orchard Parkway  
San Jose, CA 95131  
USA  
Tel: (+1) (408) 441-0311  
Fax: (+1) (408) 487-2600

## International

---

### **Atmel Asia**

Unit 01-05 & 16, 19F  
BEA Tower, Millennium City 5  
418 Kwun Tong Road  
Kwun Tong  
Kowloon  
HONG KONG  
Tel: (+852) 2245-6100  
Fax: (+852) 2722-1369

### **Atmel Munich GmbH**

Business Campus  
Parking 4  
D- 85748 Garching b.  
MUNICH  
Tel: (+49) 89-31970-111  
Fax: (+49) 89-3194621

### **Atmel Japan**

9F, Tonetsu Shinkawa Bldg.  
1-24-8 Shinkawa  
Chuo-ku, Tokyo 104-0033  
JAPAN  
Tel: (+81) 3-3523-3551  
Fax: (+81) 3-3523-7581

### **Touch Technology Division**

1560 Parkway  
Solent Business Park  
Whiteley  
Fareham  
Hampshire  
PO15 7AG  
UNITED KINGDOM  
Tel: (+44) 844 894 1920  
Fax: (+44) 1489 557 066

## Product Contact

---

### **Web Site**

[www.atmel.com](http://www.atmel.com)

### **Technical Support**

[touch@atmel.com](mailto:touch@atmel.com)

### **Sales Contact**

[www.atmel.com/contacts](http://www.atmel.com/contacts)

### **Literature Requests**

[www.atmel.com/literature](http://www.atmel.com/literature)

---

**Disclaimer:** The information in this document is provided in connection with Atmel products. No license, express or implied, by estoppel or otherwise, to any intellectual property right is granted by this document or in connection with the sale of Atmel products. **EXCEPT AS SET FORTH IN ATMEL'S TERMS AND CONDITIONS OF SALE LOCATED ON ATMEL'S WEB SITE, ATMEL ASSUMES NO LIABILITY WHATSOEVER AND DISCLAIMS ANY EXPRESS, IMPLIED OR STATUTORY WARRANTY RELATING TO ITS PRODUCTS INCLUDING, BUT NOT LIMITED TO, THE IMPLIED WARRANTY OF MERCHANTABILITY, FITNESS FOR A PARTICULAR PURPOSE, OR NON-INFRINGEMENT. IN NO EVENT SHALL ATMEL BE LIABLE FOR ANY DIRECT, INDIRECT, CONSEQUENTIAL, PUNITIVE, SPECIAL OR INCIDENTAL DAMAGES (INCLUDING, WITHOUT LIMITATION, DAMAGES FOR LOSS OF PROFITS, BUSINESS INTERRUPTION, OR LOSS OF INFORMATION) ARISING OUT OF THE USE OR INABILITY TO USE THIS DOCUMENT, EVEN IF ATMEL HAS BEEN ADVISED OF THE POSSIBILITY OF SUCH DAMAGES.** Atmel makes no representations or warranties with respect to the accuracy or completeness of the contents of this document and reserves the right to make changes to specifications and product descriptions at any time without notice. Atmel does not make any commitment to update the information contained herein. Unless specifically provided otherwise, Atmel products are not suitable for, and shall not be used in, automotive applications. Atmel's products are not intended, authorized, or warranted for use as components in applications intended to support or sustain life.

© 2010 – 2011 Atmel Corporation. All rights reserved. Atmel®, Atmel logo and combinations thereof, Adjacent Key Suppression®, AKS®, QTouch® and others are registered trademarks of Atmel Corporation or its subsidiaries. Other terms and product names may be registered trademarks or trademarks of others.