

Subminiature, Waterproof Duplex Fiber Optic Connectors

MF10 Series



■ Features

1. Compact size

Using the widely accepted MU connector ferrule (1.25 mm dia.), assembled in a one-piece shell and internal housing, the waterproof connectors can be used in space-restricted applications.

2. Used in harsh outdoor environments

Tested for 500 hour in salt-fog the connectors are IP67 rated, fully mated or with protective caps.

3. High intensity fiber optic cable

Typical FO cable is the light weight and flexible 6.5 mm outside diameter military type.

Other types of cables can be also accommodated (consult Hirose).

4. Coupling wrench

Optional coupling wrench can be provided to assure that the mated connectors are securely tightened to a specified torque range of 1.5 to 3 N·m.

5. Field installation

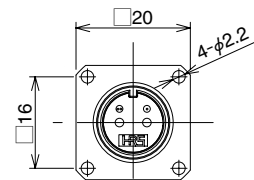
Portable tools and polishers are available; operating on 100 V AC or car cigarettes lighter's 12 V DC.

■ Applications

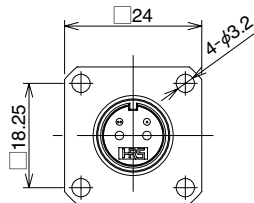
Variety of outdoor optical transmission systems including large LED controllers, surveillance cameras, base stations, railway monitoring, meteorological outdoor instrumentation and other harsh-environment outdoor applications requiring reliable FO connections.



● Flange variations



Normal flange



Wide flange

MU

SC

FC

Harsh
Environment

Attenuators

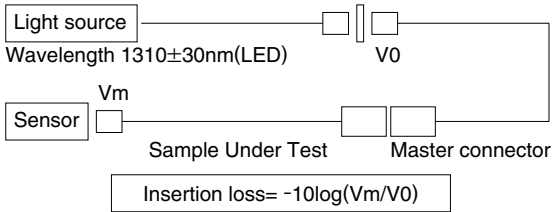
Terminators

Splitter

MP-10 Series Subminiature, Waterproof Duplex Fiber Optic Connectors

Product Specifications

Ratings	Operating temperature range	-40°C to +85°C	Storage temperature range	-25°C to +75°C
---------	-----------------------------	----------------	---------------------------	----------------

Item	Test method	Specifications
Optical characteristics	 <p>Light source Wavelength 1310±30nm(LED) V0 Sensor Vm Sample Under Test Master connector Insertion loss= -10log(Vm/V0)</p>	SM: 1.4dB max. (Average 0.3dB) MM: 0.7dB max. (Average 0.1dB) (Note)
Mechanical characteristics	Cable retention (Straight pull) Durability (mating/un-mating) Vibration Shock	200N tensile loads 200 times Frequency: 10 to 55Hz, single amplitude of 0.75mm, acceleration of 98.1 m/s ² , 2 hours in each of the 2 axis. Acceleration of 981 m/s ² , 6 ms duration, sine half-wave waveform, 3 cycles in each of the 2 axis.
Environmental characteristics	Humidity (Temperature/humidity-cycles) Temperature cycle Dry heat Cold Salt mist	-10°C to +65°C, humidity: 90% to 96% 10 cycles (240 hours) -40°C to +75°C, 42 cycles 240 hours at +85°C 240 hours at -40°C 500 hours (chrome plating), 240 hours (nickel plating) in a 5% concentration of salt mist

Note: Total insertion loss of connection (plug, receptacle and master cord). (Multi-Mode: Used 1.5dB mode scrambler)

Materials / Finish

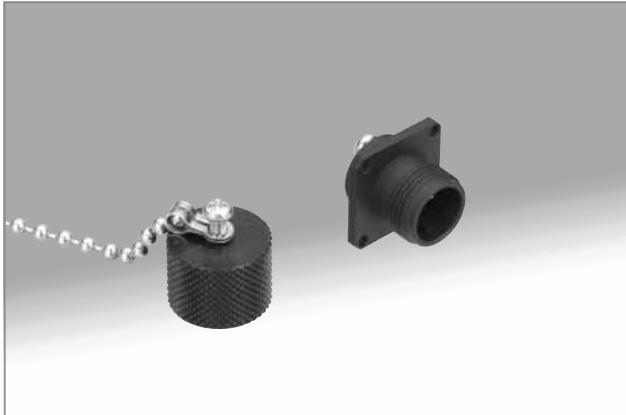
Part	Material	Finish/Color	Remarks
Plug and receptacle housing	Zinc alloy	Chrome plated (Black) or nickel plated	_____
	Brass	Chrome plated (Black) or nickel plated	_____
	Aluminum alloy	Alumite (Black)	_____
Retainer plate	Synthetic rubber	_____	UL94V-0
Hole cap	Aluminum alloy	Alumite (Black)	_____
Screws, ball chain	Stainless steel	_____	_____
Spring	Steel alloy	Zinc plated	_____
Split sleeve	Zirconia	_____	_____
Coupling wrench (Optional)	Plastic	Blue	_____

■ Plug housings



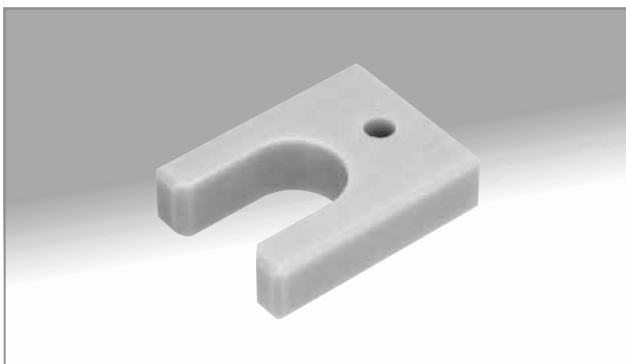
Part number	CL No.	Plating	RoHS
MF10S-WP7C01-0200(40)*	CL709-0203-2-40	Cr	YES
MF10S-WPN7C01-0200*	CL709-0544-3-00	Ni	

■ Receptacle housings

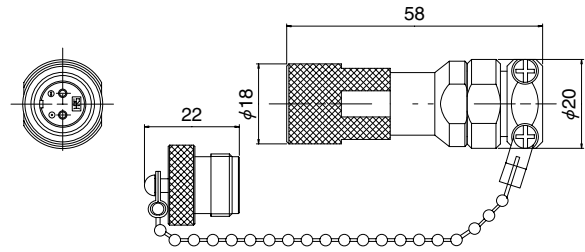


Part number	CL No.	Plating	Flange	RoHS
MF10S-WDRF01-0200(40)	CL709-0204-5-40	Cr	N	YES
MF10S-WDRFN01-0200	CL709-0548-4-00	Ni	N	
MF10S-WDRFNG01-0200	CL709-0549-7-00	Ni	W	
MF10S-WDRFG01-0200	CL709-0578-5-00	Cr	W	

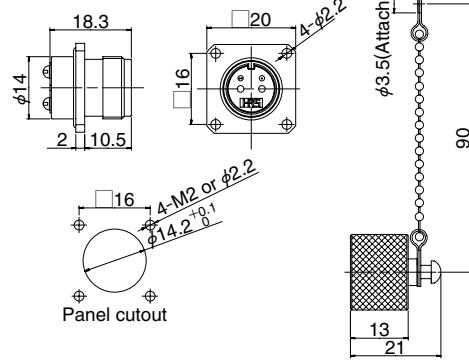
■ Coupling wrench (Optional)



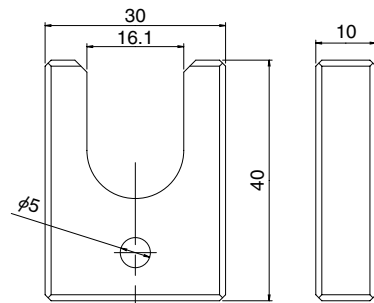
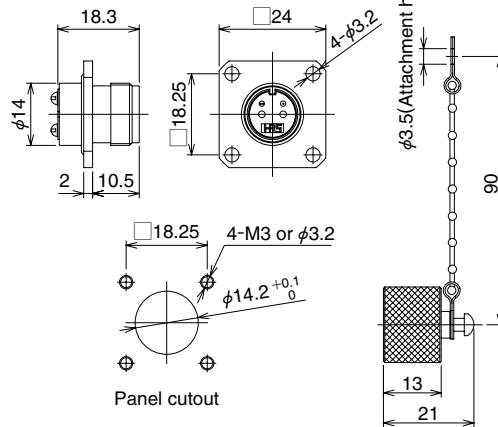
*
 Cr : Chrome plating (Black), Ni : Nickel plating
 N : Normal flange, W : Wide flange



Normal flange



Wide flange



Part number	CL No.
MF10-T1	CL709-0205-8-00

MU

SC

FC

Harsh Environment

Attenuators

Terminators

Splitter