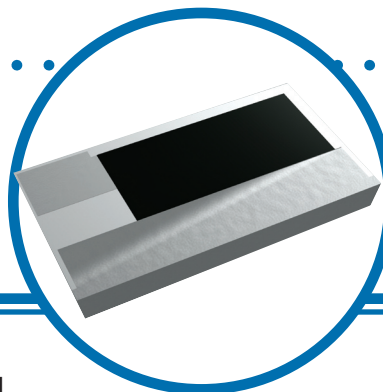


# Fixed Surface Mount Microwave Line Terminators



## PCS-S Series

- RoHS Compliant
- Up to 10GHz Operation
- VSWR <1.2 @ 3GHz (50Ω)
- 0603, 0805, 1206 and 1612 chip sizes



The PCS-S series fixed surface mount microwave terminators are designed with a terminal configuration that permits a reduced land pattern. This series exhibits excellent high frequency characteristics, and utilizes thin film technology to provide stable characteristics over temperature and time. Typical applications include RF test equipment and loads in base stations. The thin film construction with wrap-around terminations insure long term operational stability.

## Electrical Data

		PCS0816S	PCS1220S	PCS1632S	PCS3042S
<b>Frequency Range</b>		DC to 10GHz	DC to 10GHz	DC to 6GHz	DC to 3GHz
<b>VSWR</b>	<b>DC to 2GHz</b>	1.2	1.2	1.2	1.2
	<b>2.1 to 3GHz</b>	1.2	1.3	1.3	1.4
	<b>3.1 to 6GHz</b>	1.3	1.3	1.4	--
	<b>6.1 to 10GHz</b>	1.3	1.4	--	--
<b>Impedance</b>		50Ω			
<b>Power Rating (70°C)</b>		63mW	100mW	125mW	250mW
<b>Absolute TCR</b>		±50ppm/°C			
<b>Operating Temperature Range</b>		-40°C to +125°C			
<b>Termination</b>		Matte Tin Finish 100% Sn			

## Environmental Data

	Test Condition	Maximum
<b>Short Time Overload</b>	2.5 x Rated Voltage, 5 seconds	±0.2% +0.05Ω
<b>Load Life</b>	1000 Hours, 70°C	±0.2% +0.05Ω
<b>Moisture Resistance</b>	1000 Hours, 40°C, 95% RH	±0.2% +0.05Ω
<b>Temperature Cycle</b>	5 Cycles, +125°C high, -55°C Low	±0.2% +0.05Ω
<b>Resistance to Soldering Heat</b>	260°C, 10 sec.	±0.2% +0.05Ω
<b>Insulation Resistance</b>	500V, 1 minute	>1,000MΩ

### General Note

IRC reserves the right to make changes in product specification without notice or liability. All information is subject to IRC's own data and is considered accurate at time of going to print.

© IRC Advanced Film Division • 4222 South Staples Street • Corpus Christi Texas 78411 USA  
Telephone: 361 992 7900 • Facsimile: 361 992 3377 • Website: www.irctt.com

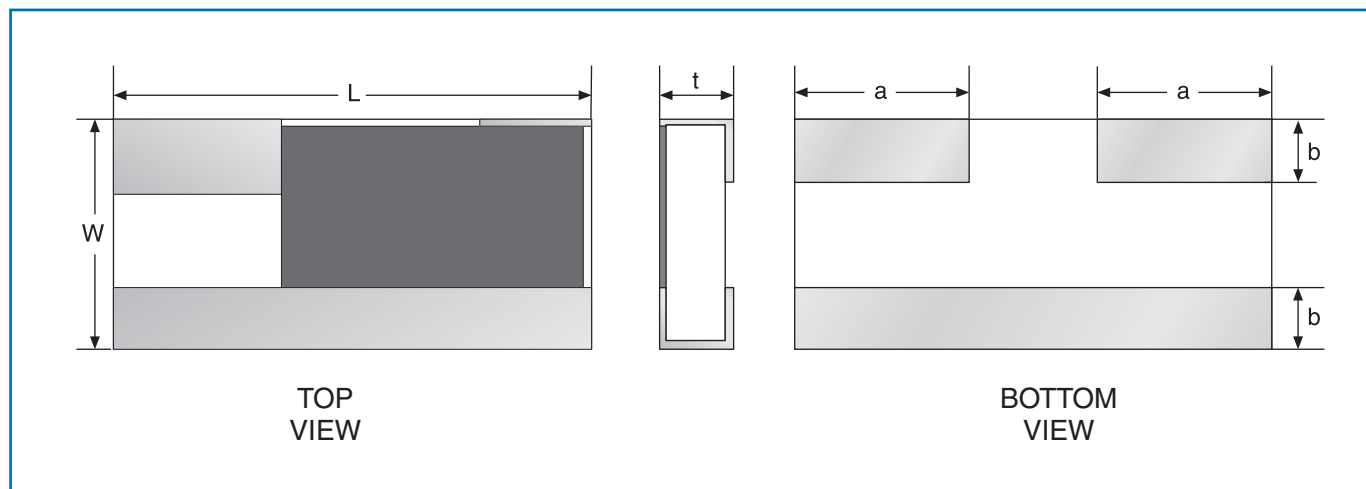


A subsidiary of  
TT electronics plc

PCS-S Series Issue January 2009 Sheet 1 of 2

# Fixed Surface Mount Microwave Line Terminators

## Physical Data



Dimensions (mm)

Model	L	W	a	b	t
PCS0816SLF	1.60 ± 0.15	0.80 ± 0.15	0.40 ± 0.15	0.20 ± 0.15	0.40 ± 0.15
PCS1220SLF	2.00 ± 0.15	1.25 ± 0.15	0.40 ± 0.15	0.30 ± 0.15	0.40 ± 0.15
PCS1632SLF	3.20 ± 0.20	1.60 ± 0.20	0.60 ± 0.20	0.30 ± 0.15	0.40 ± 0.15
PCS3042SLF	4.20 ± 0.20	3.00 ± 0.20	0.80 ± 0.20	0.40 ± 0.15	0.40 ± 0.15

## Ordering Data

Prefix ..... HFR - PCS3042SLF - 50R0

Model .....  
 PCS0816SLF = 0603 size chip with 100% Sn terminations  
 PCS1220SLF = 0805 size chip with 100% Sn terminations  
 PCS1632SLF = 1206 size chip with 100% Sn terminations  
 PCS3042SLF = 1216 size chip with 100% Sn terminations

Impedance .....  
 50R0 = 50Ω