

HPI - 6FH

The HPI - 6FH is a high - output, high - speed silicon photodiode mounted in a side - viewing plastic package . This photodiode is both compact and easy to mount.

FEATURES

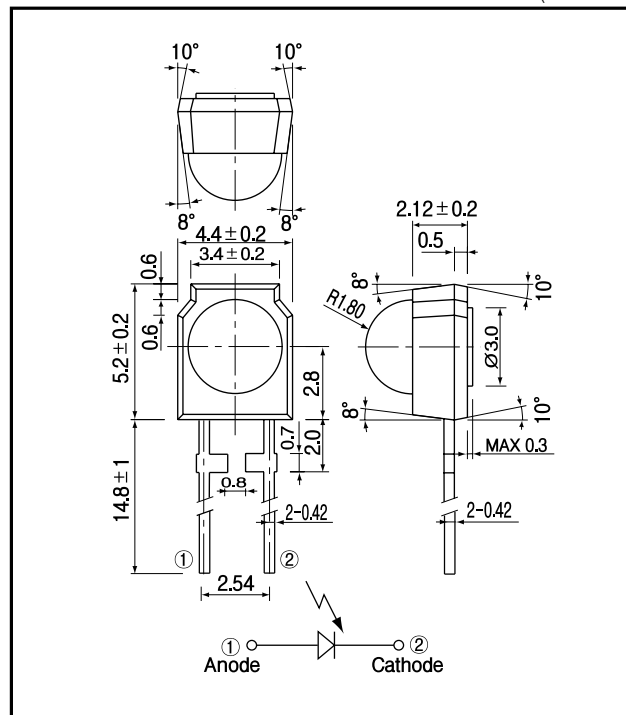
- Plastic mold package
- High speed response

APPLICATIONS

- Optical pick up

DIMENSIONS

(Unit : mm)



MAXIMUM RATINGS

(Ta=25)

Item	Symbol	Rating	Unit
Reverse voltage	V_R	30	V
Power dissipation	P_D	30	mW
Operating temp.	Topr.	- 25 + 85	
Storage temp.	Tstg.	- 40 + 100	
Soldering temp.*1	Tsol.	260	

*1.For MAX.5 seconds at the position of 2 mm from the package

ELECTRO-OPTICAL CHARACTERISTICS

(Ta=25)

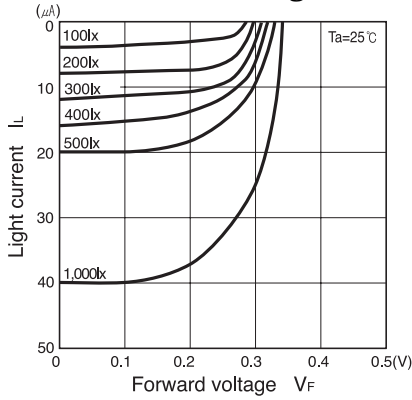
Item	Symbol	Conditions	Min.	Typ.	Max.	Unit.
Light current	I_L	$V_R = 10V, E_i = 1000lx^2$	25			μA
Sensitivity	S	$V_R = 10V, p = 780nm$	0.43	0.48		A/W
Dark current	I_d	$V_R = 10V$			5.0	nA
Capacitance	C_t	$V_R = 10V, f = 1MHz$		3.0		pF
Spectral sensitivity				450~1050		nm
Peak wavelength	λ_p			800		nm
Half angle				± 40		deg.
Rise time	t_r	$V_R = 10V, R = 1k, p = 780$		10		ns
Fall time	t_f	$800nm$		10		ns

*2.Color temp.=2856K standard Tungsten lamp

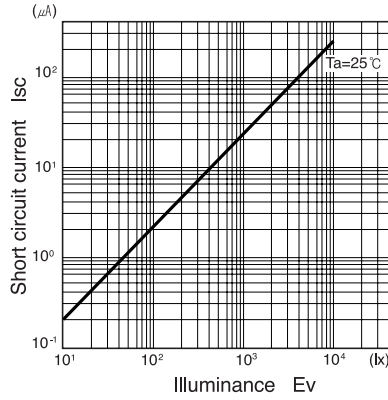
PIN Photodiode

HPI - 6FH

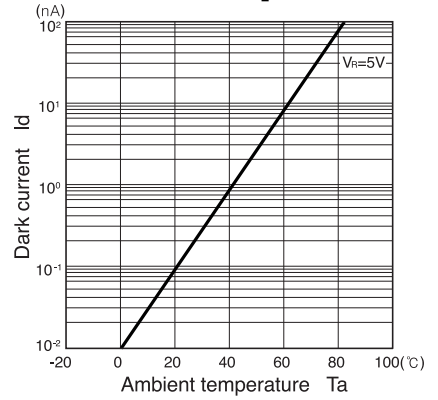
Light current Vs. Forward voltage



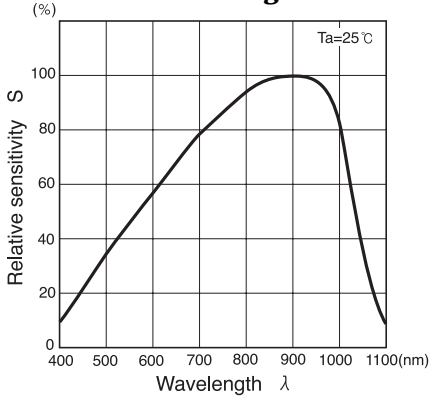
Short circuit current Vs. Illuminance



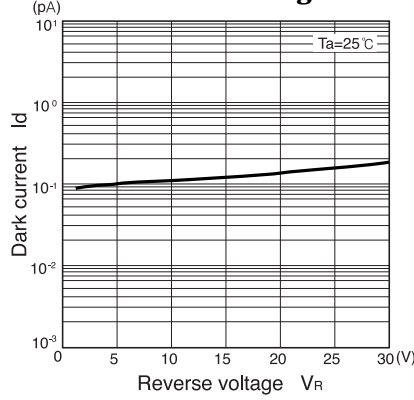
Dark current Vs. Ambient temperature



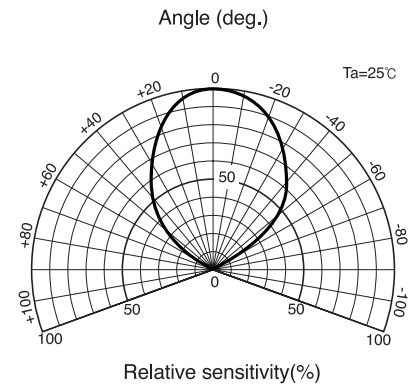
Relative sensitivity Vs. Wavelength



Dark current Vs. Reverse voltage



Radiant Pattern



Capacitance between terminals Vs. Reverse voltage

