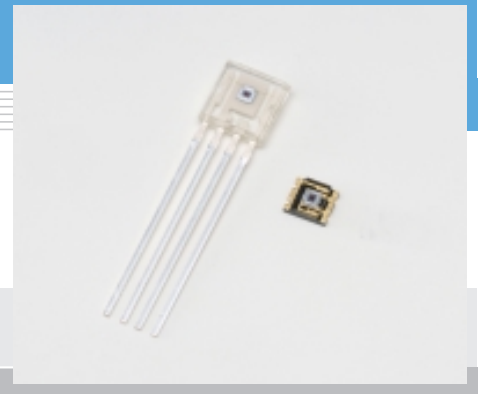


# Photo IC diode

## S9066-01, S9067-01

### Spectral response close to human eye sensitivity



S9066-01, S9067-01 photo ICs have spectral response close to human eye sensitivity. Two active areas are made on a single chip. One is for detecting light in the visible to near infrared range and the other is only sensitive to near infrared light and used for output signal correction. Almost only the visible range can be measured by finding the difference between the two output signals in the internal current amplifier circuit. Compared to previously available devices, these photo ICs offer lower output fluctuations for light sources producing the same illuminance at different color temperatures.

#### Features

- Spectral response close to human eye sensitivity is attained without using visual-compensated filter.
- Operation just as easy to use as a photodiode
- Large output current equivalent to phototransistors
- Lower output-current fluctuations
- Excellent linearity
- Low output fluctuations for light sources producing the same illuminance at different color temperatures

#### Applications

- Energy-saving sensor for TVs, etc.
- Light dimmers for liquid crystal panels
- Cellular phone backlight dimmers
- Various types of light level measurement

#### ■ Absolute maximum ratings (Ta=25 °C)

Parameter	Symbol	S9066-01	S9067-01	Unit
Reverse voltage	VR	-0.5 to 16		V
Photocurrent	IL	10		mA
Forward current	IF	10		mA
Power dissipation *1	P	250	150	mW
Operating temperature	Topr	-30 to +80		°C
Storage temperature	Tstg	-40 to +85		°C

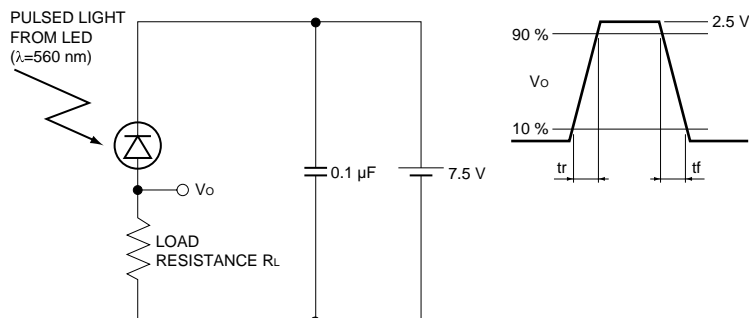
\*1: Derate power dissipation at a rate of the following rate above Ta=25 °C.

S9066-01: -3.3 mW/°C, S9067-01: -2.0 mW/°C

#### ■ Electrical and optical characteristics (Ta=25 °C)

Parameter	Symbol	Condition	S9066-01			S9067-01			Unit
			Min.	Typ.	Max.	Min.	Typ.	Max.	
Spectral response range	$\lambda$		320 to 820			320 to 820			nm
Peak sensitivity wavelength	$\lambda_p$		-	560	-	-	560	-	nm
Dark current	ID	VR=5 V	-	1.0	50	-	1.0	50	nA
Photocurrent	IL	VR=5 V, 2856 K, 100 lx	-	0.37	-	-	0.3	-	mA
Rise time *2	tr	10 to 90 %, VR=7.5 V	-	6.0	-	-	6.0	-	ms
Fall time *2	tf	RL=10 k $\Omega$ , $\lambda$ =560 nm	-	2.5	-	-	2.5	-	ms

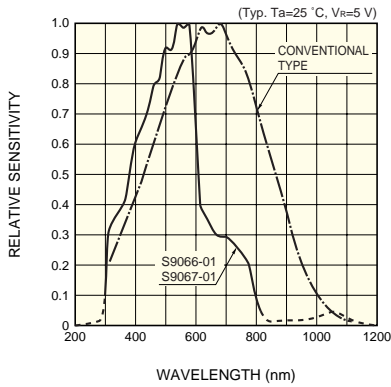
\*2: Rise/fall time measurement method



KPIC0041EA

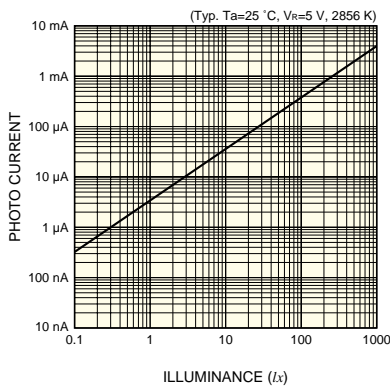
**SOLID STATE DIVISION**

### ■ Spectral response



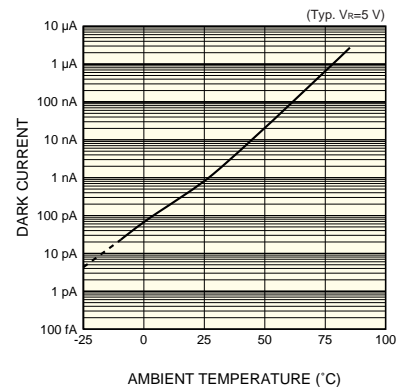
KPICB0078EB

### ■ Linearity (S9066-01)



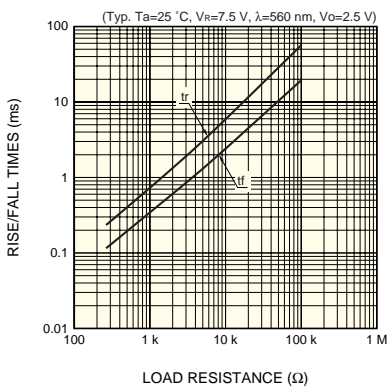
KPICB0083EA

### ■ Dark current vs. ambient temperature



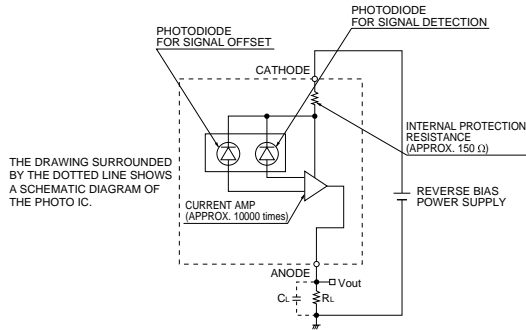
KPICB0078EA

### ■ Rise/fall times vs. load resistance



KPICB0077EA

### ■ Operating circuit example



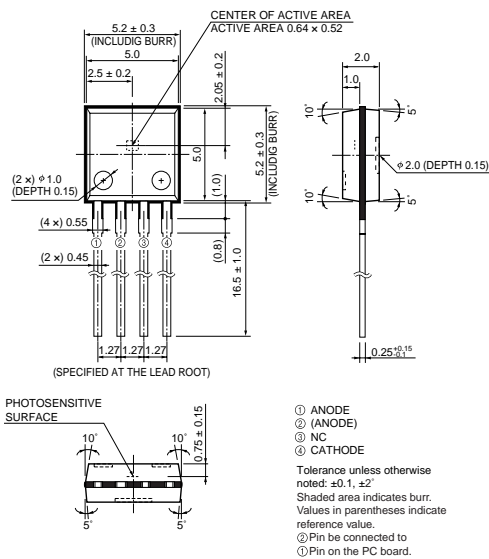
KPICC0091EA

The photo IC diode must be reverse-biased so that a positive potential is applied to the cathode. To eliminate high-frequency components, we recommend placing a load capacitance  $C_L$  in parallel with load resistance  $R_L$  as a low-pass filter.

$$\text{Cut-off frequency } f_c \approx \frac{1}{2\pi C_L R_L}$$

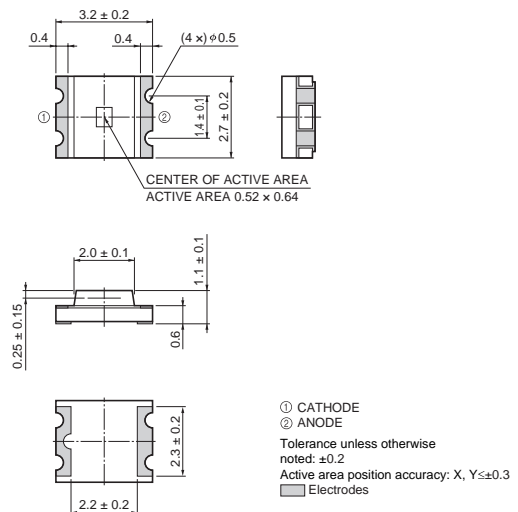
### ■ Dimensional outlines (unit: mm)

#### S9066-01



KPICA0050EC

#### S9067-01



KPICA0051EB

## HAMAMATSU

Information furnished by HAMAMATSU is believed to be reliable. However, no responsibility is assumed for possible inaccuracies or omissions. Specifications are subject to change without notice. No patent rights are granted to any of the circuits described herein. ©2005 Hamamatsu Photonics K.K.

HAMAMATSU PHOTONICS K.K., Solid State Division

1126-1 Ichino-cho, Hamamatsu City, 435-8558 Japan, Telephone: (81) 053-434-3311, Fax: (81) 053-434-5184, <http://www.hamamatsu.com>

U.S.A.: Hamamatsu Corporation: 360 Foothill Road, P.O.Box 6910, Bridgewater, N.J. 08807-0910, U.S.A., Telephone: (1) 908-231-0960, Fax: (1) 908-231-1218

Germany: Hamamatsu Photonics Deutschland GmbH: Arzbergerstr. 10, D-82211 Herrsching am Ammersee, Germany, Telephone: (49) 08152-3750, Fax: (49) 08152-2658

France: Hamamatsu Photonics France S.A.R.L.: 8, Rue du Saule Trapu, Parc du Moulin de Massy, 91882 Massy Cedex, France, Telephone: 33-(1) 69 53 71 00, Fax: 33-(1) 69 53 71 10

United Kingdom: Hamamatsu Photonics UK Limited: 2 Howard Court, 10 Tewin Road, Welwyn Garden City, Hertfordshire AL7 1BW, United Kingdom, Telephone: (44) 1707-294888, Fax: (44) 1707-325777

North Europe: Hamamatsu Photonics Norden AB: Smidsvågen 12, SE-171 41 Solna, Sweden, Telephone: (46) 8-509-031-00, Fax: (46) 8-509-031-01

Italy: Hamamatsu Photonics Italia S.R.L.: Strada della Moia, 1/E, 20020 Arese, (Milano), Italy, Telephone: (39) 02-935-81-733, Fax: (39) 02-935-81-741