

R@25C:6800 DHMS +/-10%  
 PTC: .7%/C  
 OPERATING RANGE:-55 TO 125 C  
 STORAGE RANGE:-65 TO 150 C  
 THERMAL TIME CONSTANT:60 SEC. MAX.  
 DISSIPATION CONSTANT:2.5 mw/C MIN.  
 POWER RATING: .5W@25C , DERATE TO 125  
 TESTED PER MIL-R-23648/9

FIG. 1 : PERFORMANCE CHARACTERISTICS

TEMP (C)	RESISTANCE MULTIPLIER	RESISTANCE TOLERANCE
-55	.481	18
-15	.712	25
0	.815	12
25	1.00	10
50	1.21	12
75	1.43	14
100	1.67	17
125	1.90	20

FIG. 2 : R-T CHARACTERISTICS

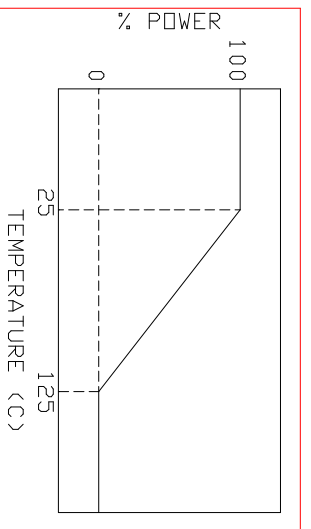


FIG. 3 : POWER DERATING CURVE

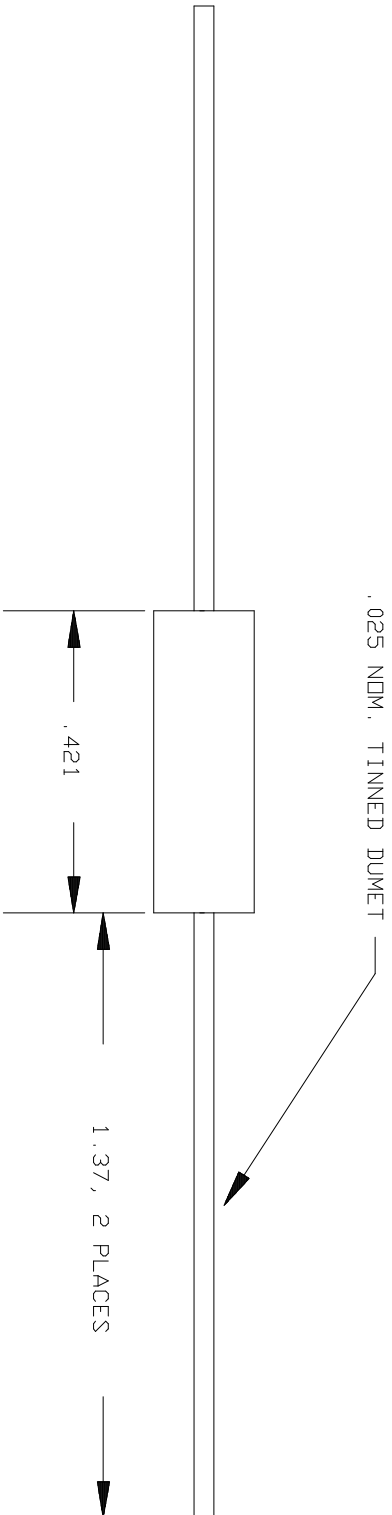
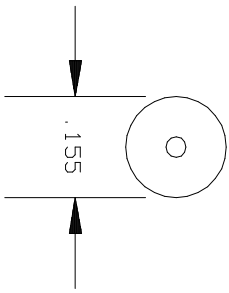
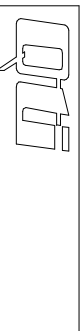


FIG. 4 : DIMENSIONS (INCHES)

NOTE: DRAWING FOR REFERENCE ONLY  
 IN THE EVENT OF CONFLICT BETWEEN THIS  
 DRAWING AND MIL-R-23648/9  
 MIL-R-23648/9 SHALL TAKE PRECEDENCE

NO.	DATE	REVISION	APPROVAL
	3.2.00	-	JH



QUALITY THERMISTOR INC.  
 2108 CENTURY WAY  
 BOISE, ID 83709  
 PH: 208-377-3373  
 FAX: 208-376-4754

DESCRIPTION:  
 6800 DHM, 10%, MIL-R-23648/9

DRAWING FILE NAME: 22ES682K	DATE:
ORIGINATOR:	DATE:
ENGINEER:	DATE:
SALES MGR.:	DATE:
QUALITY MGR.:	DATE:
PRDD. MGR.:	DATE:
QTI PART NUMBER: RTH22ES682K	DRAWING REV: -

TOLERANCES:	X = 0, 1"	JOB NUMBER:	PAGE
	XX = 0, 02"		1 / 1
	XXX = 0, 001"		