

R@25C: 8800 DHMS +/-10%
 PTC: .7%/C
 OPERATING RANGE: -55 TO 125 C
 STORAGE RANGE: -65 TO 150 C
 THERMAL TIME CONSTANT: 60 SEC. MAX.
 DISSIPATION CONSTANT: 2.5 mw/C MIN.
 POWER RATING: .5W@25C, DERATE TO 125
 TESTED PER MIL-R-23648/9

FIG. 1: PERFORMANCE CHARACTERISTICS

TEMP (C)	RESISTANCE MULTIPLIER	RESISTANCE TOLERANCE
-55	.481	18
-15	.712	25
0	.815	12
25	1.00	10
50	1.21	12
75	1.43	14
100	1.67	17
125	1.90	20

FIG. 2: R-T CHARACTERISTICS

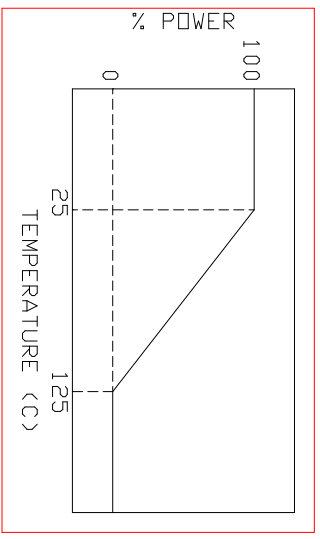


FIG. 3: POWER DERATING CURVE

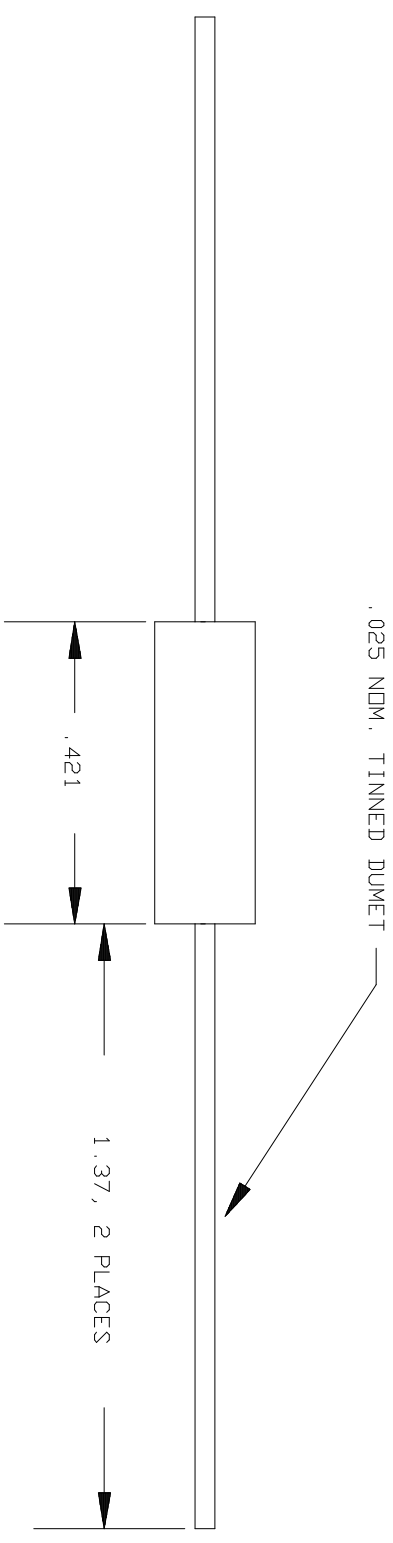
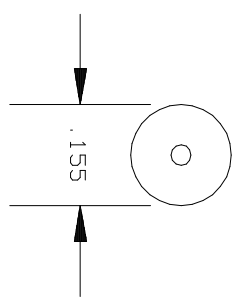


FIG. 4: DIMENSIONS (INCHES)

NOTE: DRAWING FOR REFERENCE ONLY
 IN THE EVENT OF CONFLICT BETWEEN THIS
 DRAWING AND MIL-R-23648/9
 MIL-R-23648/9 SHALL TAKE PRECEDENCE

		QUALITY THERMISTOR INC. 2108 CENTURY WAY BOISE, ID 83709 PH: 208-377-3373 FAX: 208-376-4754	
DRAWING FILE NAME: 22ES882K		DATE:	
ORIGINATOR:		DATE:	
ENGINEER:		DATE:	
SALES MGR.:		DATE:	
QUALITY MGR.:		DATE:	
PRDD. MGR.:		DATE:	
DESCRIPTION: 8800 DHM, 10%, MIL-R-23648/9		QTI PART NUMBER: RTH22ES882K	
TOLERANCES: X=0, 1" XX=0, 02" XXX=0, 001"		JOB NUMBER:	
ND. DATE REVISION APPROVAL		DRAWING REV	