

# RF IMPEDANCE TRANSFORMER

## SURFACE MOUNT MODEL: TM1-9

**WIDE BANDWIDTH**

**100 - 5000 MHz**

**FEATURES:**

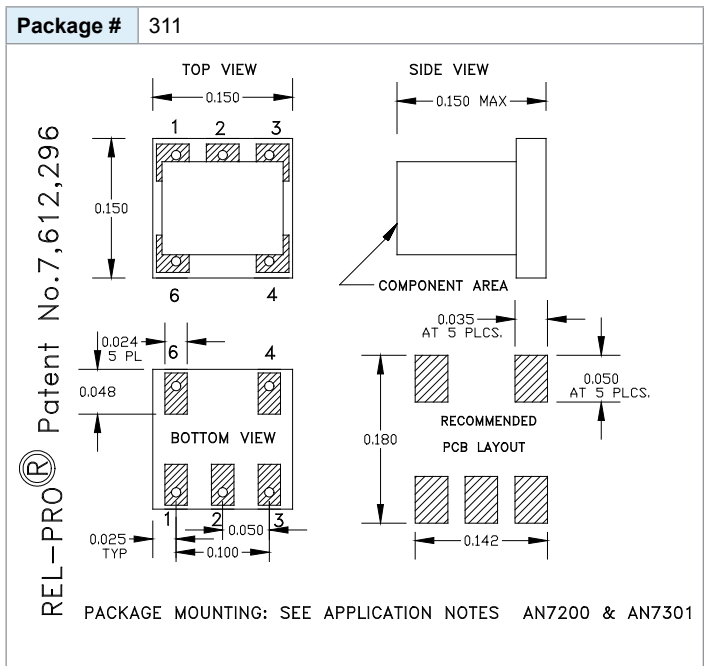
- ▶ Cost Effective
- ▶ Low Loss
- ▶ Small Size, Surface Mount
- ▶ Lead Free Patented REL-PRO® Technology



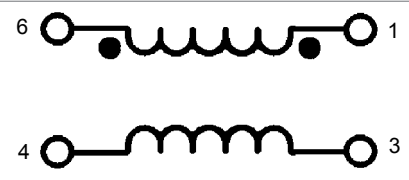
Part Identifier:  
2 Red Dots

**SPECIFICATIONS (Rev. D 2/14/11)**

Frequency	100 - 5000 MHz								
Impedance Ratio	1:1								
Insertion Loss (dB) *	<table border="1"> <tr> <th>Frequency (MHz)</th> <th>dB (Max.)</th> </tr> <tr> <td>100 - 1000</td> <td>2.25</td> </tr> <tr> <td>1001 - 3000</td> <td>2.75</td> </tr> <tr> <td>3001 - 5000</td> <td>3.00</td> </tr> </table>	Frequency (MHz)	dB (Max.)	100 - 1000	2.25	1001 - 3000	2.75	3001 - 5000	3.00
	Frequency (MHz)	dB (Max.)							
	100 - 1000	2.25							
1001 - 3000	2.75								
3001 - 5000	3.00								
Amplitude Unbalance	0.8 dB (Typ.)								
Phase Unbalance	8° (Typ.)								
Return Loss	10 dB (Typ.)								
Input Power	0.25 Watt (Max.)								
Input Impedance	50 Ohms (Nom.)								
DC Current **	25 mA (Max.)								
Operating Temperature Range	-40 to +85 °C								
<p>* Plot excludes 3 dB Split Loss                  ** With DC blocking capacitors installed</p>									



PORT CONGRUATION			
Pri. Dot	Pri.	Sec. Dot	Sec.
6	4	1	3



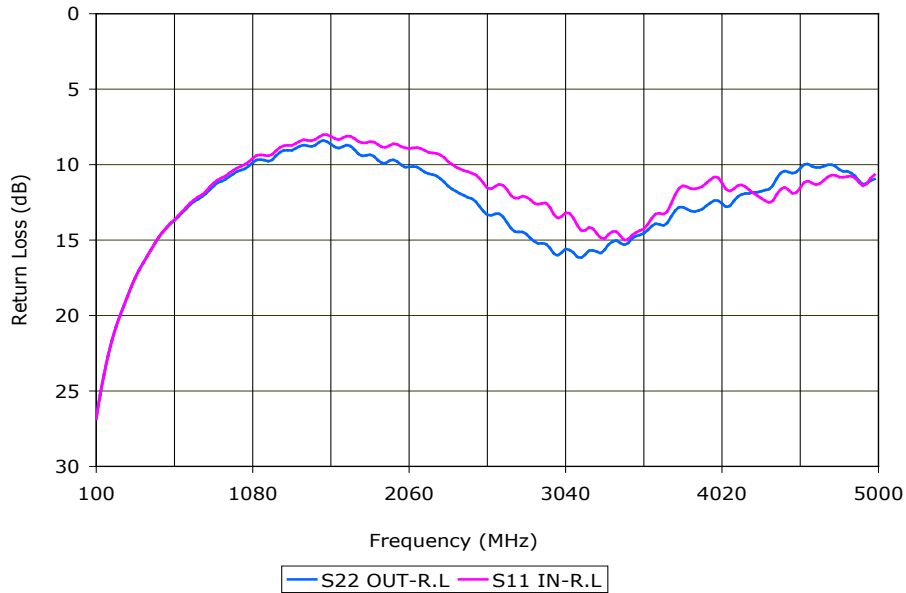
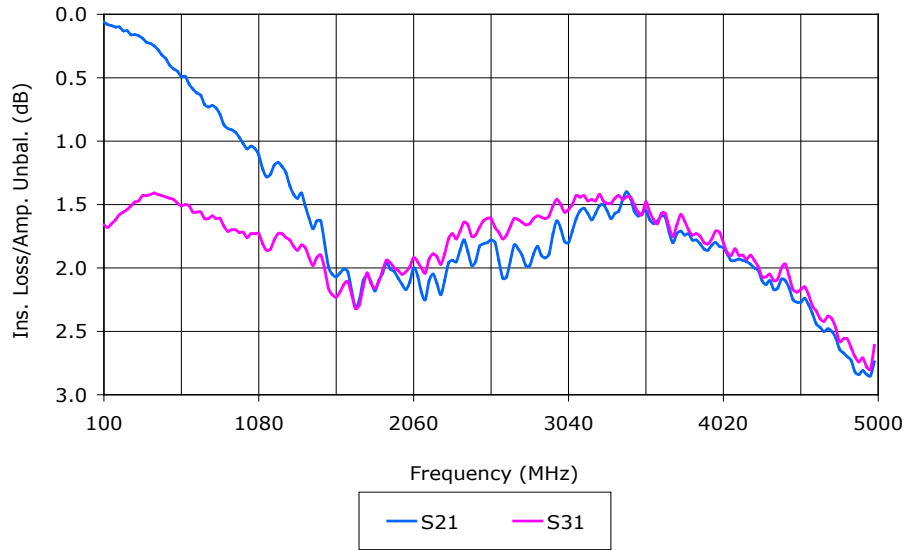
# RF IMPEDANCE TRANSFORMER

## SURFACE MOUNT MODEL: TM1-9

WIDE BANDWIDTH

100 - 5000 MHz

Data @ 25°C



PERFORMANCE PLOTS

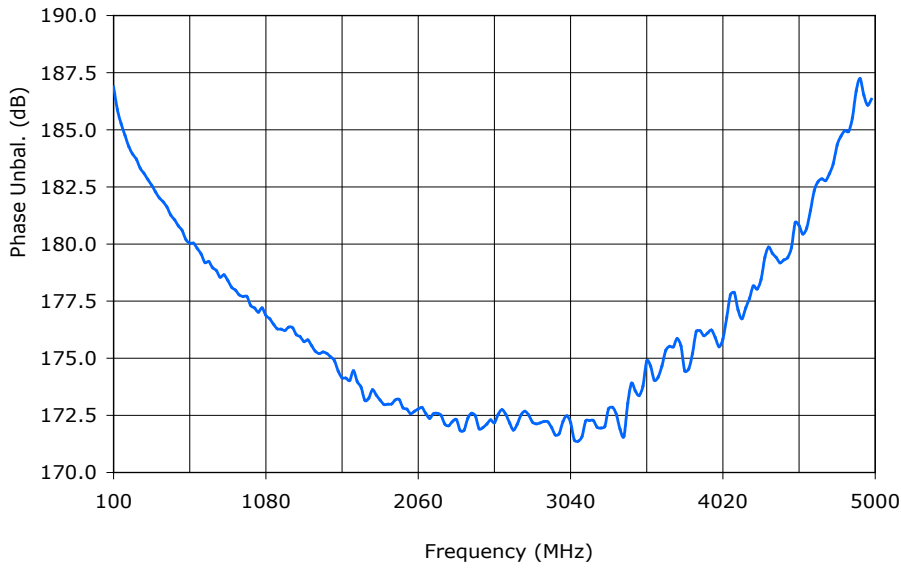
# RF IMPEDANCE TRANSFORMER

## SURFACE MOUNT MODEL: TM1-9

WIDE BANDWIDTH

100 - 5000 MHz

Data @ 25°C



PERFORMANCE PLOTS