

R@25C: 120 DHMS +/-2%
 PTC: .7%/C
 OPERATING RANGE: -55 TO 125 C
 STORAGE RANGE: -65 TO 150 C
 THERMAL TIME CONSTANT: 60 SEC. MAX.
 DISSIPATION CONSTANT: 2.5 mw/C MIN.
 POWER RATING: .5w@25C, DERATE TO 125
 TESTED PER MIL-R-23648/9

FIG. 1: PERFORMANCE CHARACTERISTICS

TEMP (C)	RESISTANCE MULTIPLIER	RESISTANCE TOLERANCE
-55	.582	17
-15	.770	10
0	.847	4
25	1.00	4
50	1.17	4
75	1.37	6
100	1.58	9
125	1.80	12

FIG. 2: R-T CHARACTERISTICS

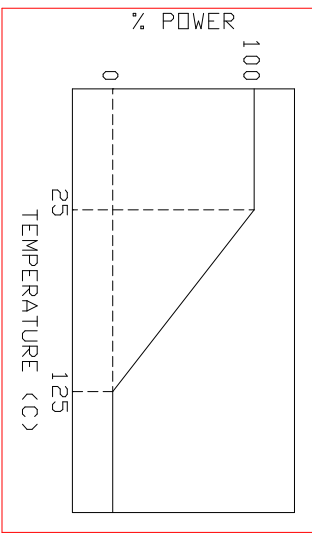


FIG. 3: POWER DERATING CURVE

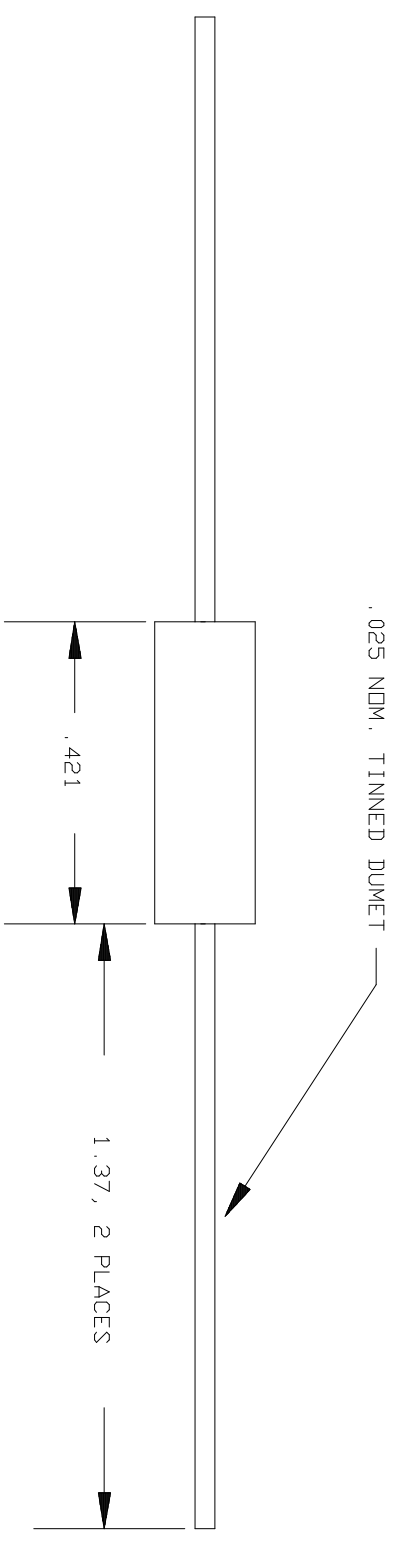
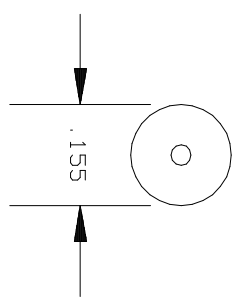



FIG. 4: DIMENSIONS (INCHES)

NOTE: DRAWING FOR REFERENCE ONLY
 IN THE EVENT OF CONFLICT BETWEEN THIS
 DRAWING AND MIL-R-23648/9
 MIL-R-23648/9 SHALL TAKE PRECEDENCE

		DRAWING FILE NAME: 22ES121G	
QUALITY THERMISTOR INC. 2108 CENTURY WAY BOISE, ID 83709 PH: 208-377-3373 FAX: 208-376-4754		ORIGINATOR: DATE: ENGINEER: DATE: SALES MGR.: DATE: QUALITY MGR.: DATE: PRDD. MGR.: DATE:	
DESCRIPTION: 120 DHM, 2%, MIL-R-23648/9		QTI PART NUMBER: RTH22ES121G DRAWING REV:	
TOLERANCES: X = 0, 1" XX = 0, 02" XXX = 0, 001"		JOB NUMBER: PAGE 1 / 1	