

R@25C: 1000 DHMS +/-10%  
 PTC: .7%/C  
 OPERATING RANGE: -55 TO 125 C  
 STORAGE RANGE: -65 TO 150 C  
 THERMAL TIME CONSTANT: 60 SEC. MAX.  
 DISSIPATION CONSTANT: 2.5 mw/C MIN.  
 POWER RATING: .5W@25C, DERATE TO 125  
 TESTED PER MIL-R-23648/9

FIG. 1: PERFORMANCE CHARACTERISTICS

TEMP (C)	RESISTANCE MULTIPLIER	RESISTANCE TOLERANCE
-55	.550	25
-15	.740	18
0	.835	12
25	1.00	12
50	1.120	12
75	1.42	14
100	1.66	17
125	1.92	20

FIG. 2: R-T CHARACTERISTICS

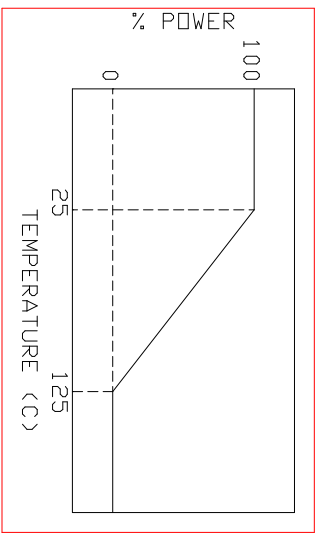


FIG. 3: POWER DERATING CURVE

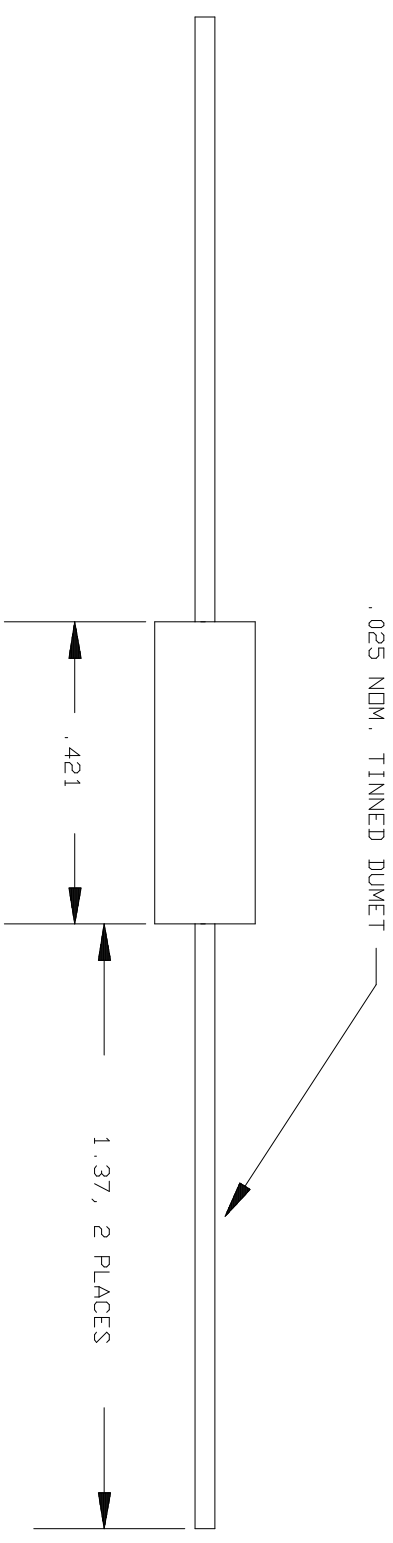
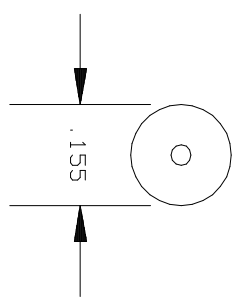


FIG. 4: DIMENSIONS (INCHES)

NOTE: DRAWING FOR REFERENCE ONLY  
 IN THE EVENT OF CONFLICT BETWEEN THIS  
 DRAWING AND MIL-R-23648/9  
 MIL-R-23648/9 SHALL TAKE PRECEDENCE

		QUALITY THERMISTOR INC. 2108 CENTURY WAY BOISE, ID 83709 PH: 208-377-3373 FAX: 208-376-4754	
DRAWING FILE NAME: 22ES102K		DATE:	
ORIGINATOR:		DATE:	
ENGINEER:		DATE:	
SALES MGR.:		DATE:	
QUALITY MGR.:		DATE:	
PRDD. MGR.:		DATE:	
DESCRIPTION: 1000 DHM, 10%, MIL-R-23648/9		QTI PART NUMBER: RTH22ES102K	
TOLERANCES: X=0, 1" XX=0, 02" XXX=0, 001"		JOB NUMBER:	
ND. DATE REVISION APPROVAL		DRAWING REV	
3.2.00 - JH		1 / 1	