

R@25C: 1000 DHMS +/-5%  
 PTC: .7%/C  
 OPERATING RANGE: -55 TO 125 C  
 STORAGE RANGE: -65 TO 150 C  
 THERMAL TIME CONSTANT: 60 SEC. MAX.  
 DISSIPATION CONSTANT: 2.5 mw/C MIN.  
 POWER RATING: .5W@25C, DERATE TO 125  
 TESTED PER MIL-R-23648/9

FIG. 1: PERFORMANCE CHARACTERISTICS

TEMP (C)	RESISTANCE MULTIPLIER	RESISTANCE TOLERANCE
-55	.550	20
-15	.740	13
0	.835	7
25	1.00	5
50	1.20	7
75	1.42	9
100	1.66	12
125	1.92	15

FIG. 2: R-T CHARACTERISTICS

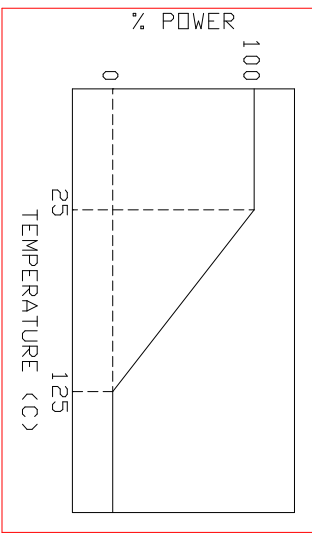


FIG. 3: POWER DERATING CURVE

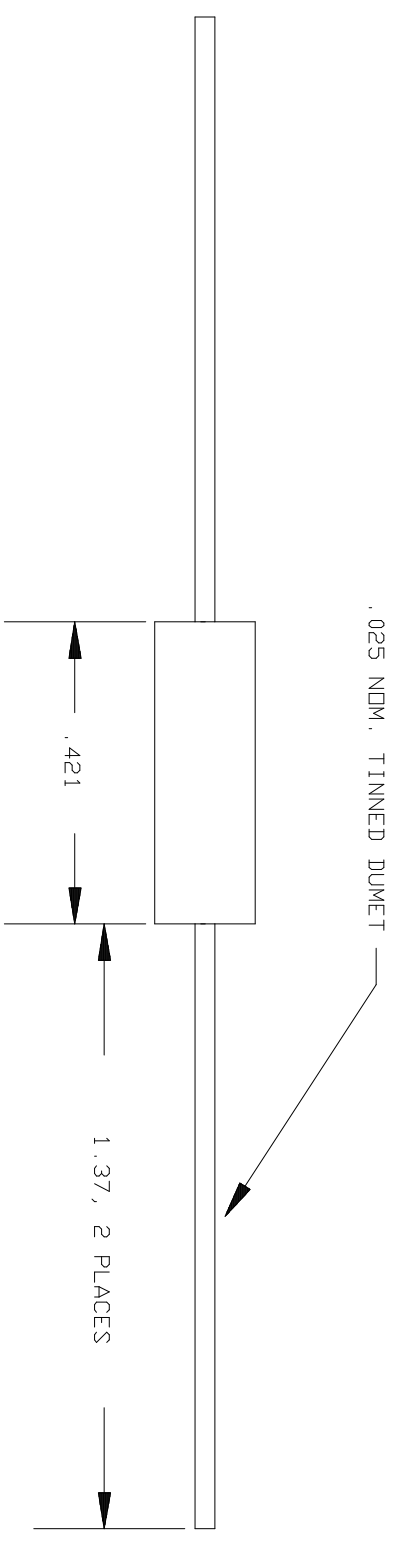
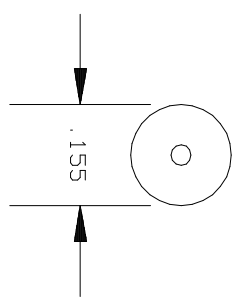


FIG. 4: DIMENSIONS (INCHES)

NOTE: DRAWING FOR REFERENCE ONLY  
 IN THE EVENT OF CONFLICT BETWEEN THIS  
 DRAWING AND MIL-R-23648/9  
 MIL-R-23648/9 SHALL TAKE PRECEDENCE

		QUALITY THERMISTOR INC. 2108 CENTURY WAY BOISE, ID 83709 PH: 208-377-3373 FAX: 208-376-4754	
DRAWING FILE NAME: 22ES102J		DATE:	
ORIGINATOR:		DATE:	
ENGINEER:		DATE:	
SALES MGR.:		DATE:	
QUALITY MGR.:		DATE:	
PRDD. MGR.:		DATE:	
DESCRIPTION: 1000 DHM, 5%, MIL-R-23648/9		QTI PART NUMBER: RTH22ES102J	
TOLERANCES: X = 0, 1" XX = 0, 02" XXX = 0, 001"		JOB NUMBER:	
ND.		DATE	
REVISION		APPROVAL	
3.2.00		JH	
-		-	
DRAWING		PAGE	
REV		1 / 1	