

R@25C: 10000 DHMS +/-5%
 PTC: .7%/C
 OPERATING RANGE: -55 TO 125 C
 STORAGE RANGE: -65 TO 150 C
 THERMAL TIME CONSTANT: 60 SEC. MAX.
 DISSIPATION CONSTANT: 2.5 mw/C MIN.
 POWER RATING: .5W@25C, DERATE TO 125
 TESTED PER MIL-R-23648/9

FIG. 1: PERFORMANCE CHARACTERISTICS

TEMP (C)	RESISTANCE MULTIPLIER	RESISTANCE TOLERANCE
-55	.481	20
-15	.712	13
0	.815	7
25	1.00	7
50	1.21	9
75	1.43	12
100	1.67	
125	1.90	

FIG. 2: R-T CHARACTERISTICS

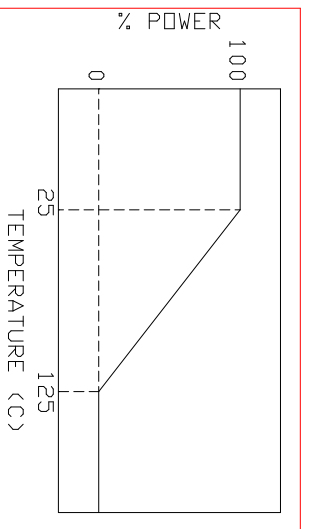


FIG. 3: POWER DERATING CURVE

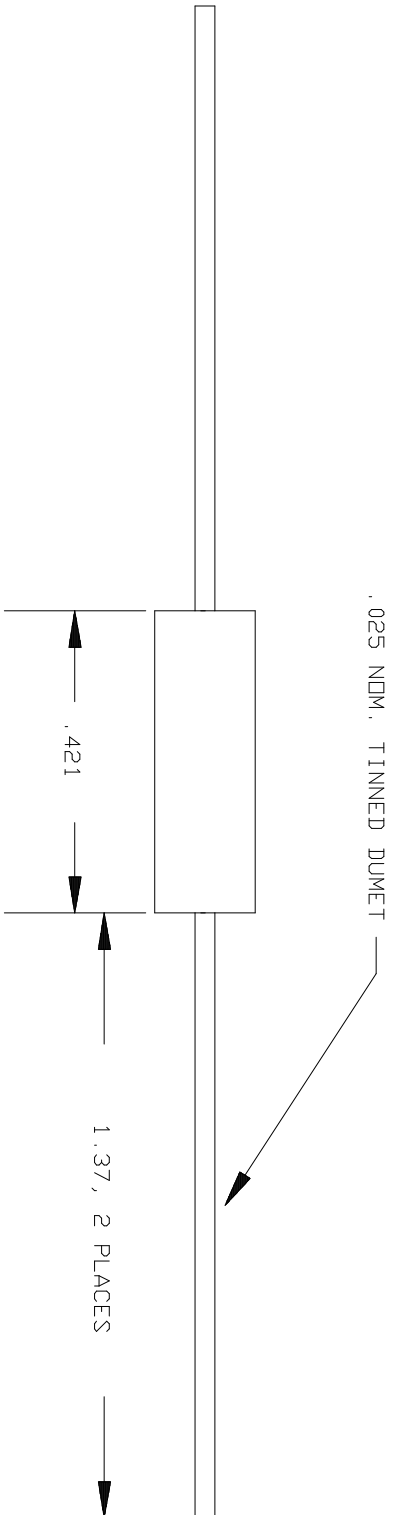
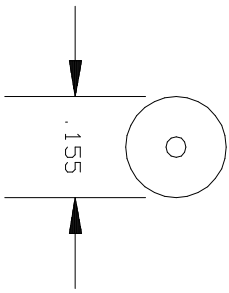


FIG. 4: DIMENSIONS (INCHES)

NOTE: DRAWING FOR REFERENCE ONLY
 IN THE EVENT OF CONFLICT BETWEEN THIS
 DRAWING AND MIL-R-23648/9
 MIL-R-23648/9 SHALL TAKE PRECEDENCE

NO.	DATE	REVISION	APPROVAL
	3.2.00	-	JH

QTI
 QUALITY THERMISTOR INC.
 2108 CENTURY WAY
 BOISE, ID 83709
 PH: 208-377-3373
 FAX: 208-376-4754

DRAWING FILE NAME: 22ES103J
 ORIGINATOR: DATE:
 ENGINEER: DATE:
 SALES MGR.: DATE:
 QUALITY MGR.: DATE:
 PRDD. MGR.: DATE:
 DESCRIPTION: 10000 DHM, 5%, MIL-R-23648/9
 QTI PART NUMBER: RTH22ES103J
 DRAWING REV: -

TOLERANCES: X = 0, 1"
 XX = 0, 02"
 XXX = 0, 001"
 JOB NUMBER:
 PAGE 1 / 1