

R@25C: 100 DHMS +/-5%
 PTC: .7%/C
 OPERATING RANGE: -55 TO 125 C
 STORAGE RANGE: -65 TO 150 C
 THERMAL TIME CONSTANT: 60 SEC. MAX.
 DISSIPATION CONSTANT: 2.5 mw/C MIN.
 POWER RATING: .5W@25C, DERATE TO 125
 TESTED PER MIL-R-23648/9

FIG. 1: PERFORMANCE CHARACTERISTICS

TEMP (C)	RESISTANCE MULTIPLIER	RESISTANCE TOLERANCE
-55	.582	20
-15	.770	13
0	.847	7
25	1.00	5
50	1.17	7
75	1.37	9
100	1.58	12
125	1.80	15

FIG. 2: R-T CHARACTERISTICS

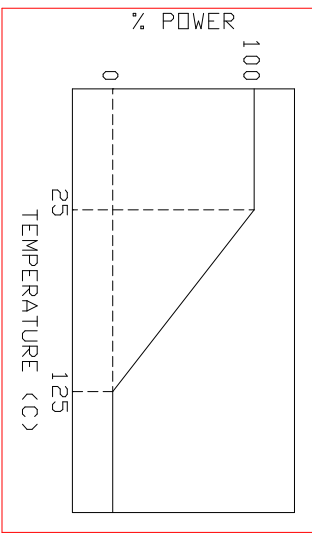


FIG. 3: POWER DERATING CURVE

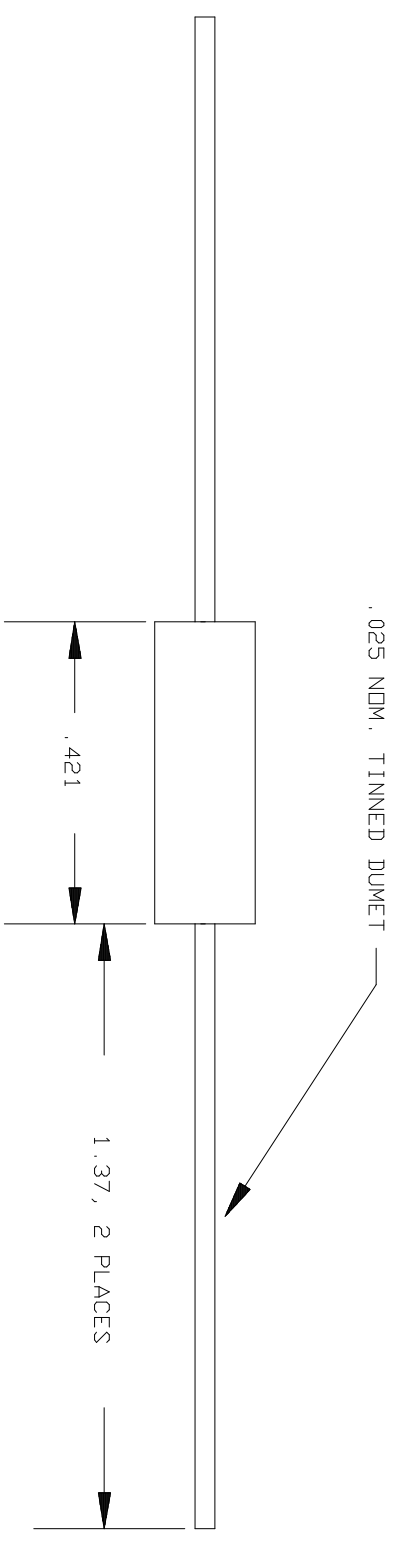
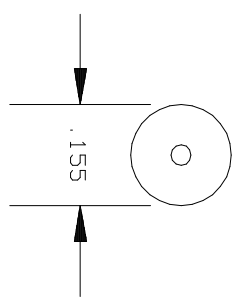


FIG. 4: DIMENSIONS (INCHES)

NOTE: DRAWING FOR REFERENCE ONLY
 IN THE EVENT OF CONFLICT BETWEEN THIS
 DRAWING AND MIL-R-23648/9
 MIL-R-23648/9 SHALL TAKE PRECEDENCE

		QUALITY THERMISTOR INC. 2108 CENTURY WAY BOISE, ID 83709 PH: 208-377-3373 FAX: 208-376-4754	
DRAWING FILE NAME: 22ES101J		DATE:	
ORIGINATOR:		DATE:	
ENGINEER:		DATE:	
SALES MGR.:		DATE:	
QUALITY MGR.:		DATE:	
PRD. MGR.:		DATE:	
DESCRIPTION: 100 DHM, 5%, MIL-R-23648/9		QTI PART NUMBER: RTH22ES101J	
TOLERANCES: X = 0, 1" XX = 0, 02" XXX = 0, 001"		JOB NUMBER:	
ND.		DATE	
REVISION		APPROVAL	
APPROVAL: JH		DRAWING REV:	
DATE: 3.2.00		PAGE: 1 / 1	