

R@25C: 10000 DHMS +/-10%  
 PTC: .7%/C  
 OPERATING RANGE: -55 TO 125 C  
 STORAGE RANGE: -65 TO 150 C  
 THERMAL TIME CONSTANT: 60 SEC. MAX.  
 DISSIPATION CONSTANT: 2.5 mw/C MIN.  
 POWER RATING: .5W@25C, DERATE TO 125  
 TESTED PER MIL-R-23648/9

FIG. 1: PERFORMANCE CHARACTERISTICS

TEMP (C)	RESISTANCE MULTIPLIER	RESISTANCE TOLERANCE
-55	.481	18
-15	.712	25
0	.815	12
25	1.00	10
50	1.21	12
75	1.43	14
100	1.67	17
125	1.90	20

FIG. 2: R-T CHARACTERISTICS

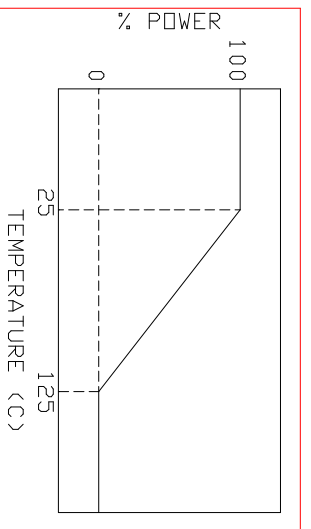


FIG. 3: POWER DERATING CURVE

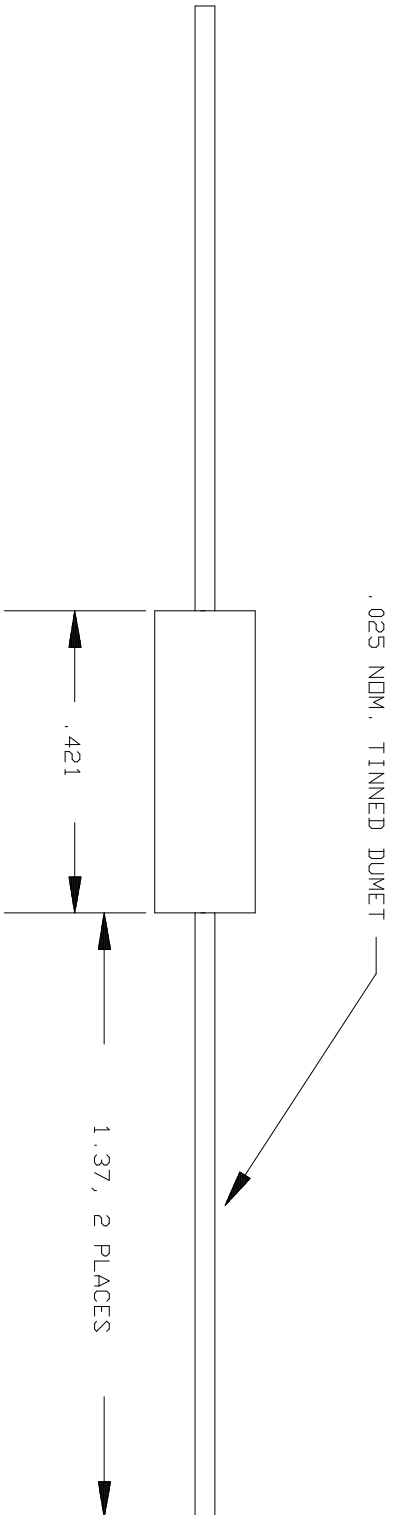
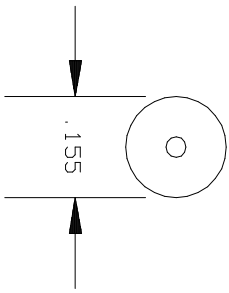


FIG. 4: DIMENSIONS (INCHES)

NOTE: DRAWING FOR REFERENCE ONLY  
 IN THE EVENT OF CONFLICT BETWEEN THIS  
 DRAWING AND MIL-R-23648/9  
 MIL-R-23648/9 SHALL TAKE PRECEDENCE

NO.	DATE	REVISION	APPROVAL
	3.2.00	-	JH

**QTI**  
 QUALITY THERMISTOR INC.  
 2108 CENTURY WAY  
 BOISE, ID 83709  
 PH: 208-377-3373  
 FAX: 208-376-4754

DRAWING FILE NAME: 22ES103K  
 ORIGINATOR: DATE:  
 ENGINEER: DATE:  
 SALES MGR.: DATE:  
 QUALITY MGR.: DATE:  
 PRDD. MGR.: DATE:  
 QTI PART NUMBER: RTH22ES103K  
 DESCRIPTION: 10000 DHM, 10%, MIL-R-23648/9  
 DRAWING REV: -

TOLERANCES: X = 0, 1"  
 XX = 0, 02"  
 XXX = 0, 001"  
 JOB NUMBER:  
 PAGE 1 / 1