

R@25C: 10000 DHMS +/-2%  
 PTC: .7%/C  
 OPERATING RANGE: -55 TO 125 C  
 STORAGE RANGE: -65 TO 150 C  
 THERMAL TIME CONSTANT: 60 SEC. MAX.  
 DISSIPATION CONSTANT: 2.5 mw/C MIN.  
 POWER RATING: .5W@25C, DERATE TO 125  
 TESTED PER MIL-R-23648/9

FIG. 1: PERFORMANCE CHARACTERISTICS

TEMP (C)	RESISTANCE MULTIPLIER	RESISTANCE TOLERANCE
-55	.481	17
-15	.712	10
0	.815	4
25	1.00	4
50	1.21	4
75	1.43	6
100	1.67	9
125	1.90	12

FIG. 2: R-T CHARACTERISTICS

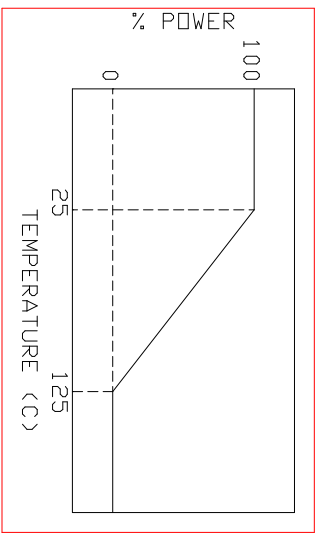


FIG. 3: POWER DERATING CURVE

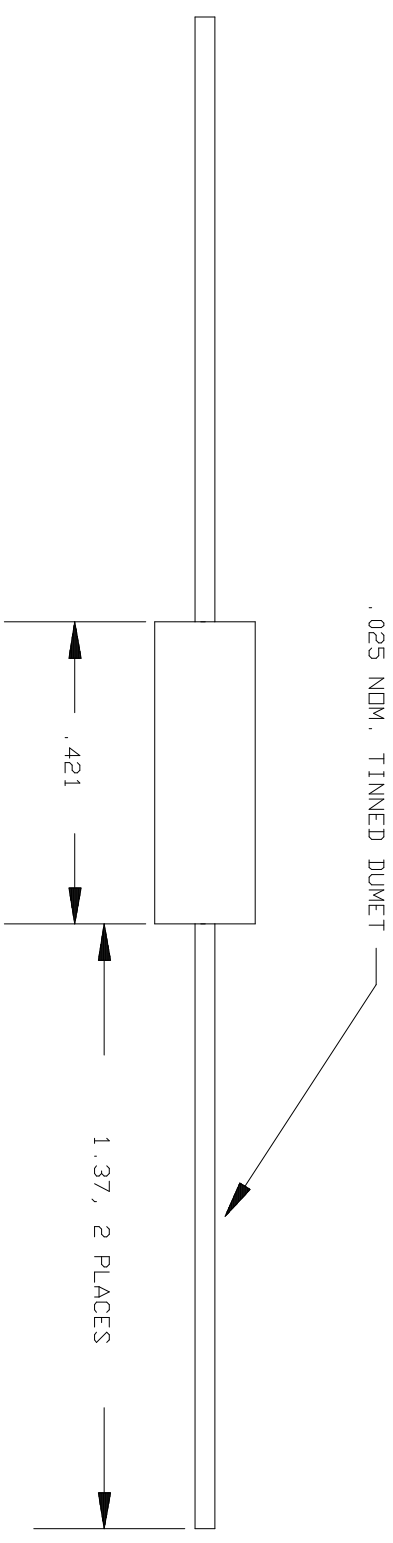
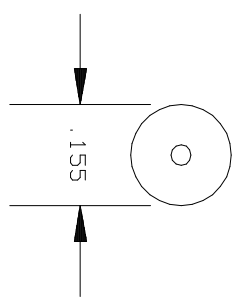


FIG. 4: DIMENSIONS (INCHES)

NOTE: DRAWING FOR REFERENCE ONLY  
 IN THE EVENT OF CONFLICT BETWEEN THIS  
 DRAWING AND MIL-R-23648/9  
 MIL-R-23648/9 SHALL TAKE PRECEDENCE

		QUALITY THERMISTOR INC. 2108 CENTURY WAY BOISE, ID 83709 PH: 208-377-3373 FAX: 208-376-4754	
DRAWING FILE NAME: 22ES103G		DATE:	
ORIGINATOR:		DATE:	
ENGINEER:		DATE:	
SALES MGR.:		DATE:	
QUALITY MGR.:		DATE:	
PRDD. MGR.:		DATE:	
DESCRIPTION: 10000 DHM, 2%, MIL-R-23648/9		QTI PART NUMBER: RTH22ES103G	
TOLERANCES: X = 0, 1" XX = 0, 02" XXX = 0, 001"		JOB NUMBER:	
ND.		DATE	
REVISION		APPROVAL	
3.2.00		JH	
-		-	
DRAWING		PAGE	
REV		1 / 1	