

R@25C: 100 DHMS +/-2%
 PTC: .7%/C
 OPERATING RANGE: -55 TO 125 C
 STORAGE RANGE: -65 TO 150 C
 THERMAL TIME CONSTANT: 60 SEC. MAX.
 DISSIPATION CONSTANT: 2.5 mw/C MIN.
 POWER RATING: .5W@25C, DERATE TO 125
 TESTED PER MIL-R-23648/9

FIG. 1: PERFORMANCE CHARACTERISTICS

| TEMP (C) | RESISTANCE MULTIPLIER | RESISTANCE TOLERANCE |
|----------|-----------------------|----------------------|
| -55 | .582 | 17 |
| -15 | .770 | 10 |
| 0 | .847 | 4 |
| 25 | 1.00 | 4 |
| 50 | 1.17 | 4 |
| 75 | 1.37 | 6 |
| 100 | 1.58 | 9 |
| 125 | 1.80 | 12 |

FIG. 2: R-T CHARACTERISTICS

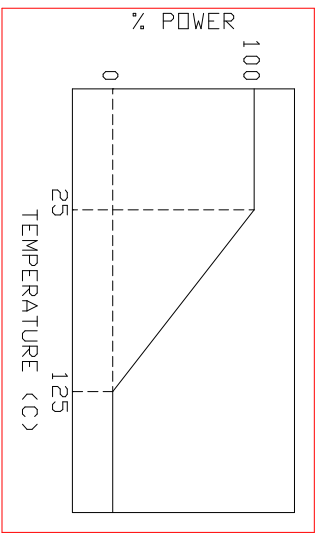


FIG. 3: POWER DERATING CURVE

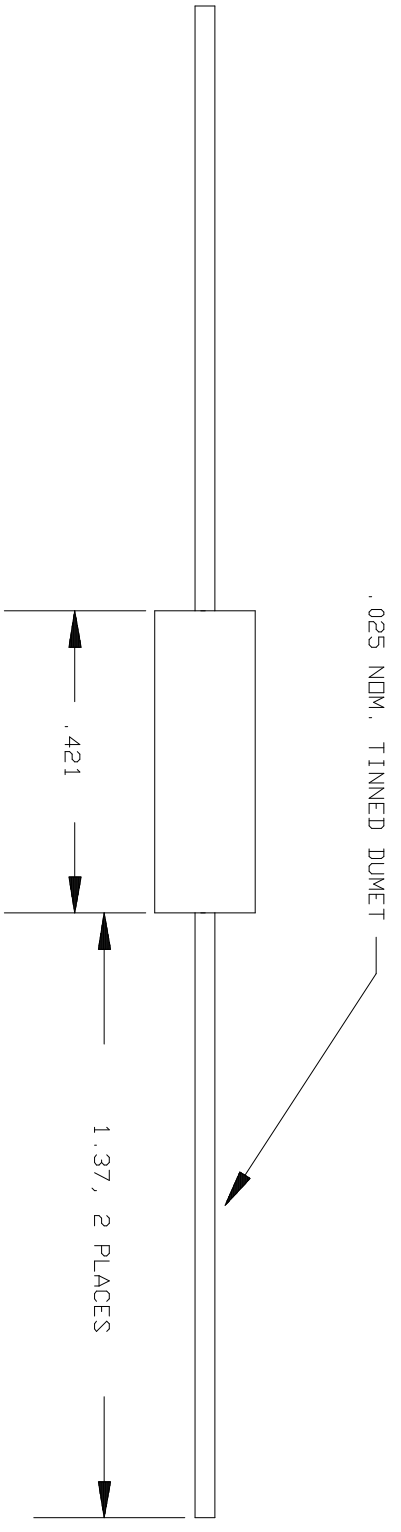
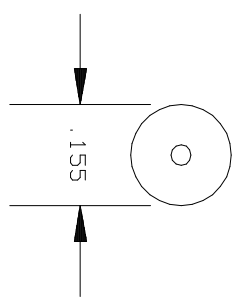


FIG. 4: DIMENSIONS (INCHES)

NOTE: DRAWING FOR REFERENCE ONLY
 IN THE EVENT OF CONFLICT BETWEEN THIS
 DRAWING AND MIL-R-23648/9
 MIL-R-23648/9 SHALL TAKE PRECEDENCE

| | | | |
|--|--|---|--|
| | | QUALITY THERMISTOR INC. 2108 CENTURY WAY BOISE, ID 83709 PH: 208-377-3373 FAX: 208-376-4754 | |
| DRAWING FILE NAME: 22ES101G | | DATE: | |
| ORIGINATOR: | | DATE: | |
| ENGINEER: | | DATE: | |
| SALES MGR.: | | DATE: | |
| QUALITY MGR.: | | DATE: | |
| PRDD. MGR.: | | DATE: | |
| DESCRIPTION: 100 DHM, 2%, MIL-R-23648/9 | | QTI PART NUMBER: RTH22ES101G | |
| TOLERANCES: X = 0, 1" XX = 0, 02" XXX = 0, 001" | | JOB NUMBER: | |
| ND. | | DATE | |
| REVISION | | APPROVAL | |
| 3.2.00 | | JH | |
| - | | - | |
| DRAWING | | PAGE | |
| REV | | 1 / 1 | |