



Model Number

REF-H33

Reflector with screw fixing

Features

- M3 metal threaded insert
- Same 25.4 mm hole spacing allows the use of ML100 mounting accessories

Threading M3

Threading M3

Accessories

OMH-10

Mounting aid

OMH-ML100-01

Mounting bracket

OMH-ML100-02

Mounting bracket

OMH-ML100-03

Mounting aid for round steel \varnothing 12 mm or sheet 1.5 mm ... 3 mm

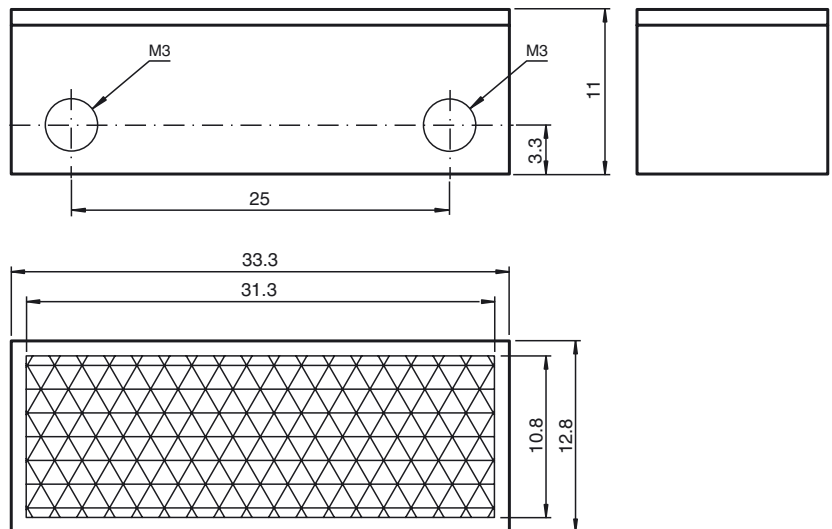
OMH-ML100-04

Mounting bracket

OMH-ML100-05

Mounting bracket

Dimensions



Technical data

General specifications

Construction type rectangular

Ambient conditions

Ambient temperature -25 ... 65 °C (-13 ... 149 °F)

Mechanical specifications

Material PMMA/ABS
 Dimensions 33.3 mm x 12.8 mm x 11 mm
 Mounting M3 metal threaded insert