

High Voltage PTFE Trimmer Capacitors

6KV TO 15KV

HIGH VOLTAGE APPLICATIONS

Voltronics new "NT" series of PTFE trimmers are designed for applications requiring greater capacitance and voltage ratings than the popular smaller trimmers but without the large size and expense of vacuum capacitors.

THE "NT" LINE OFFERS:

- High voltage
- Non-rotating piston, long life & no tuning noise
- Extremely stable under shock & vibration
- Screw head does not move in & out



NOTE: All parts shown here can be ordered non-magnetic.

GENERAL SPECIFICATIONS

PART NUMBER DESIGNATIONS		Capacitance		DC Working Voltage	DC Withstanding Voltage	Fig.	"A" Dim. ±.06	"B" Dim. ±.03	"C" Dim. ±.03
Configuration as shown on drawing	Same as drawing without extended shaft	From Below	To Above						
NT10-6E	NT10-6	1.0	10.0	3000	6000	1	1.15	0.38	-
NT10-12E	NT10-12	2.0	10.0	6000	12000	1	1.83	0.63	-
NT15E	NT15	1.0	15.0	2000	4000	1	1.69	0.31	-
NT25-6E	NT25-6	5.0	25.0	3000	6000	1	1.62	0.63	-
NT25-15E	NT25-15	7.0	25.0	6000	12000	1	1.77	1.13	-
NT30E	NT30	4.0	30.0	3000	6000	1	2.25	1.50	-
NT48-4-2RL	NT48-4	1.5	48.0	2500	3600	2	2.25	0.31	0.31
NT50E	NT50	5.0	50.0	4500	9000	1	2.25	1.50	-
NT70-6E	NT70-6	2.5	70.0	3000	6000	1	3.00	0.70	-
NT70-15E	NT70-15	6.5	70.0	7500	15000	1	3.25	1.63	-
NT85E	NT85	5.0	85.0	3000	6000	1	3.25	1.50	-
NT100-4-2RL	NT100-4	2.0	100.0	2500	3600	2	4.25	0.31	0.31

NOTE: Add "NL" to end of part number to order part without #20 AWG lead

Fig. 1

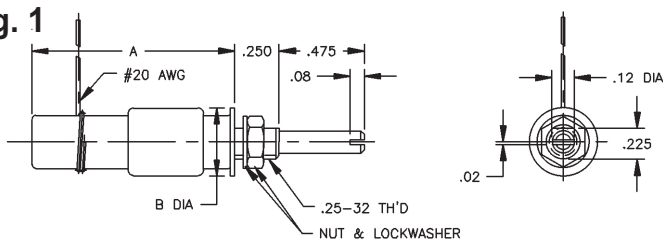
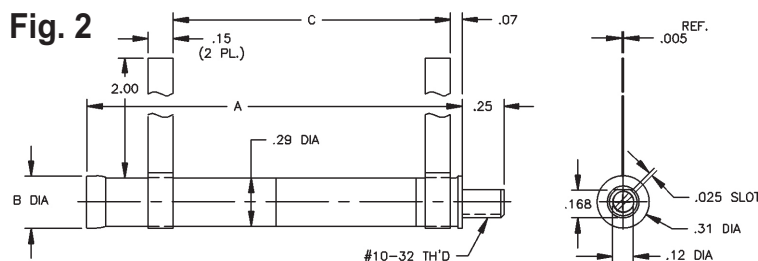


Fig. 2



IN	0.020	0.080	0.120	0.225	0.250	0.310	0.380	0.460	0.630	0.700	1.130	1.150	1.500	1.620	1.630	1.690	1.770	1.830	2.250	3.000	3.250
MM	0.51	2.03	3.05	5.72	6.35	7.87	9.65	11.68	16.00	16.00	17.78	29.21	38.10	41.15	41.40	42.93	44.96	46.48	57.15	76.20	82.55

Recommended Tuning Tool: TT-100 or TT-600

NOTE: Drawing tolerances where not specified XXX + .005 XX + .016