

RoHS Compliant Product  
A suffix of "-C" specifies halogen & lead-free

### FEATURES

- Extremely High Switching Speed
- Low Reverse Leakage Current
- High Reliability
- Small Outline Surface Mount SOD-923 Package

### APPLICATION

- High Speed Switching

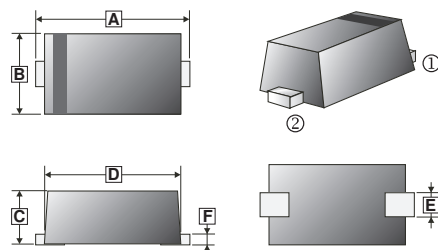
### MARKING:

3

### PACKAGE INFORMATION

Package	MPQ	Leader Size
SOD-923	8K	7 inch

### SOD-923



REF.	Millimeter		REF.	Millimeter	
	Min.	Max.		Min.	Max.
A	0.95	1.05	D	0.75	0.85
B	0.55	0.65	E	0.15	0.25
C	0.34	0.43	F	0.07	0.17



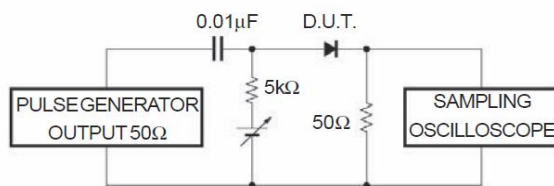
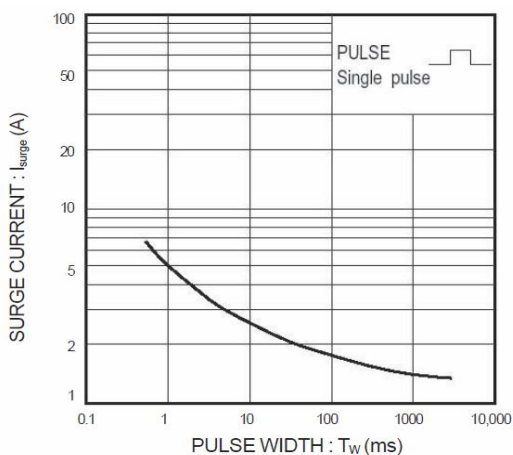
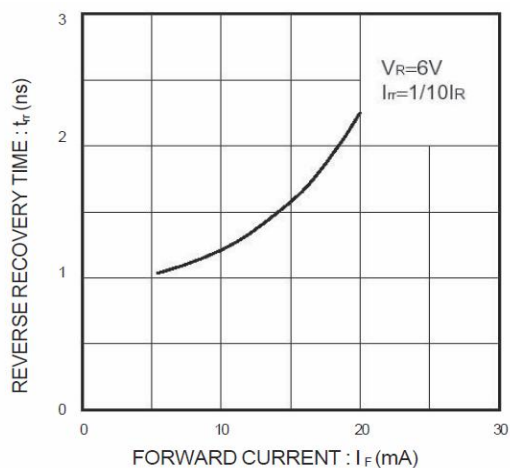
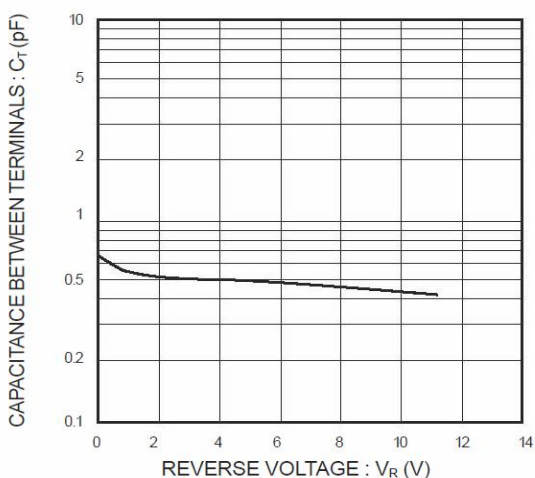
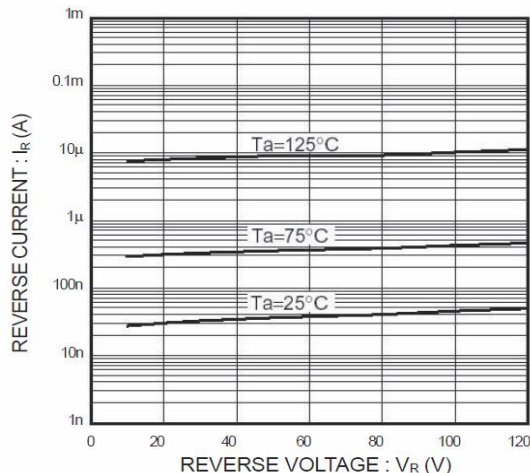
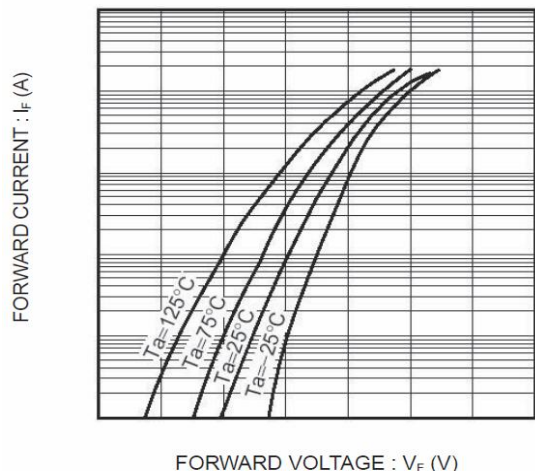
### ABSOLUTE MAXIMUM RATINGS (T<sub>A</sub>=25°C unless otherwise specified)

Parameter	Symbol	Value	Unit
Non-Repetitive Peak Reverse Voltage	V <sub>RM</sub>	90	V
DC Reverse Voltage	V <sub>R</sub>	80	V
Average Rectified Forward Current	I <sub>F(AV)</sub>	100	mA
Peak Forward Surge Current	I <sub>FSM</sub>	500	mA
	t=1.0 S		
Junction & Storage Temperature	T <sub>J</sub> , T <sub>STG</sub>	125, -55~125	°C

### ELECTRICAL CHARACTERISTICS (T<sub>A</sub>=25°C unless otherwise specified)

Parameter	Symbol	Min.	Max.	Unit	Test Conditions
Forward Voltage	V <sub>F</sub>	-	1.2	V	I <sub>F</sub> =100mA
Reverse Voltage Leakage Current	I <sub>R</sub>	-	0.1	µA	V <sub>R</sub> =80V
Capacitance Between Terminals	C <sub>T</sub>	-	3	pF	V <sub>R</sub> =0.5V, f=1MHz
Reverse Recovery Time	T <sub>RR</sub>	-	4	ns	V <sub>R</sub> =6V, I <sub>F</sub> =10mA, R <sub>L</sub> =100Ω

**CHARACTERISTIC CURVES**



**Fig.6 Reverse recovery time ( $t_{rr}$ ) measurement circuit**