

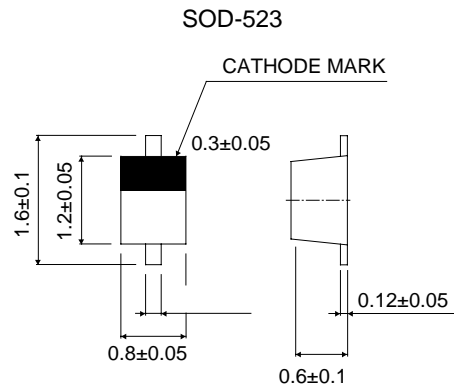
A suffix of "-C" specifies halogen & lead-free

FEATURES

- High speed switching
- High reliability
- RoHS Compliant Product

MECHANICAL DATA

- Extremely small surface mounting type. (EMD2)
- High speed. ($t_{rr}=1.2\text{ns}$ type.)
- Silicon epitaxial planer



Dimensions in millimeters

MAXIMUM RATINGS ($T_J = 25$ unless otherwise noted)

Rating	Symbol	Value	Unit
Peak reverse voltage	V_{RM}	90	Volts
DC reverse voltage	V_R	80	Volts
Mean rectifying current	I_o	100	mA
Peak forward current	I_{FM}	200	mA
Surge current (1s)	I_{surge}	500	mA
Junction Temperature	T_J	125	
Storage Temperature Range	T_{stg}	-55 to +125	

ELECTRICAL CHARACTERISTICS ($T_A = 25$)

Characteristic	Symbol	Min	Typ	Max	Unit
Forward voltage ($I_F = 100\text{mA}$)	V_F	-	-	1.2	Volts
Reverse current ($V_R = 80\text{V}$)	I_R	-	-	0.1	mA
Capacitance between terminals ($V_R = 0.5\text{V}$, $f = 1\text{MHz}$)	C_T	-	0.27	3.0	pF
Reverse recovery time ($V_R = 6\text{V}$, $I_F = 10\text{mA}$, $R_L = 100\Omega$)	t_{rr}	-	-	4	ns

● Electrical characteristic curves ($T_a=25^\circ\text{C}$)

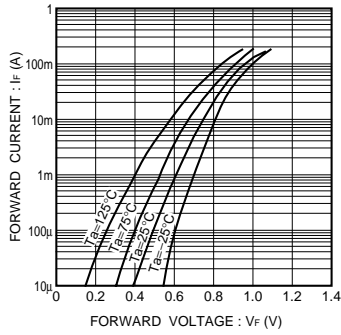


Fig.1 Forward characteristics

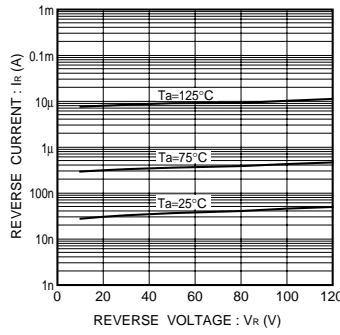


Fig.2 Reverse characteristics

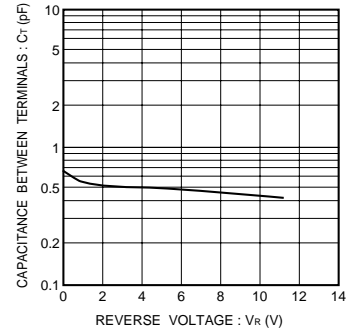


Fig.3 Capacitance between terminals

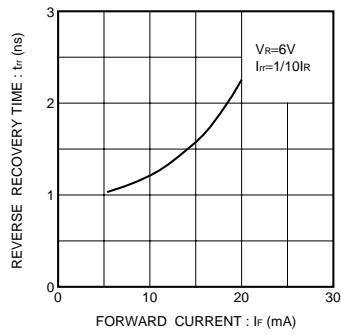


Fig.4 Reverse recovery time characteristics

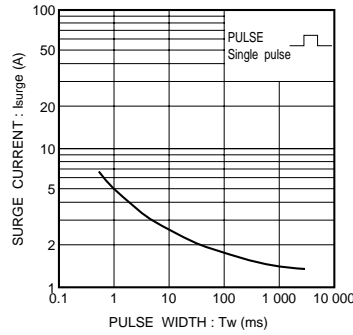


Fig.5 Surge current characteristics

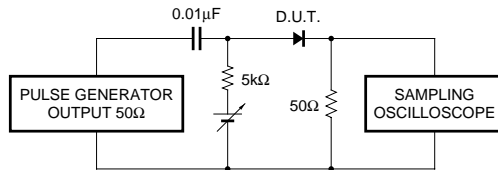


Fig.6 Reverse recovery time (t_{rr}) measurement circuit