

BSOZAA30M

Features

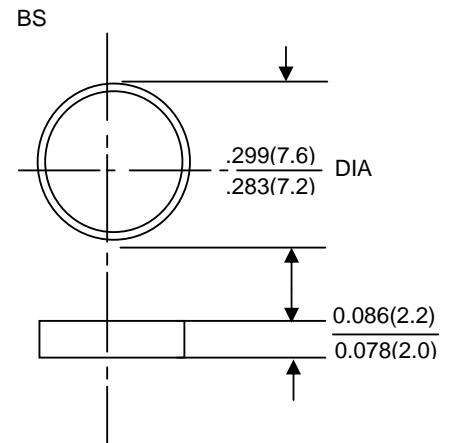
- High power capability
- Economical
- Avalanche voltage: 37 to 41 volts

BIG SOZA CELL

**AVALANCHE VOLTAGE
37 TO 41 VOLTS
CURRENT 30AMPS**

Mechanical Data

- Copper slug
- Technology: cell with vacuum soldered
- Polarity: colour dots denotes cathode end
- Mounting Position: Any
- Weight: 0.7 grams



Maximum Ratings and Electrical Characteristics

- Rating at 25°C ambient temperature unless otherwise specified
- Single phase, half wave, 60Hz, resistive or inductive load
- For capacitive load derate current by 20%

Dimensions in inches and millimeters

Parameters	Symbols	Min.	Nominal	Max.	Units
Peak repetitive reverse voltage	V_{RRM}	28			Volts
Working peak reverse voltage	V_{RWM}	28			
DC blocking voltage	V_{DC}	28			
Average rectified forward current at $T_c=125^\circ\text{C}$	I_o	30			Amps
Repetitive peak reverse surge current $T_c=10\text{msec}$ duty cycle <1%	I_{RSM}	30			Amps
Breakdown voltage (V_{BR} @ $I_R=100\text{mA}$, $T_c=25^\circ\text{C}$)	V_{BR1}	37	39	41	Volts
$I_R=90\text{Amps}$, $T_c=150^\circ\text{C}$, $PW=80\text{usec}$	V_{BR2}			54	
Forward voltage drop (V_{FWB}) @ $I_F=100\text{Amps}$ < 300sec	V_F	0.98	1.0	1.1	Volts
Peak forward surge current	I_{FSM}	400			Amps
Reverse leakage ($V_R=28\text{V}_{DC}$) $T_c=25^\circ\text{C}$	I_R	0.2	1.0	2.0	μA
Operating and storage junction temperature range	T_J, T_{STG}	-65 to +175			$^\circ\text{C}$

Notes: 1. Enough heatsink must be considered in application.

BSOZAA30M

