

Features

- True resistive analog output
- Compact, moisture resistant package
- Low LED current
- Digital to analog isolation

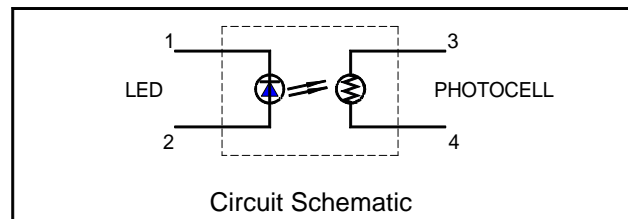
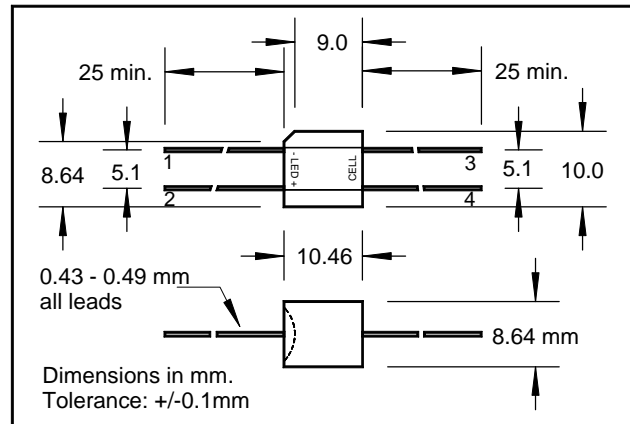
Description

This optocoupler consists of an LED input optically coupled to a photocell. The photocell resistance is high when the LED current is "off" and low resistance when the LED current is "on".

Absolute Maximum Ratings

Storage Temperature	-40 to +75°C
Operating Temperature	-40 to +75°C
Soldering Temperature (2)	260°C
Isolation Voltage (DC or peak AC)	2500V

Note: (1) Derate linearly to 0 at 75°C
 (2) >2 mm from case for <5 sec.



Electrical Characteristics (T_A=25°C unless otherwise noted)

Symbol	Parameter	Min	Typ	Max	Units	Test Conditions
LED						
I _F	Forward Current			40	mA	
V _F	Forward Voltage			2.5	V	I _F = 20 mA
V _R	Reverse Voltage			3.0	V	
Cell						
V _C	Maximum Cell Voltage			100	V	(DC or peak AC)
P _D	Power Dissipation			175	mW	25°C (1)
Coupled						
R _{ON}	On Resistance			630	Ω	I _F = 2 mA
R _{OFF}	Off Resistance	50			MΩ	10 sec after I _F = 0.

Specifications subject to change without notice

103254 REV 2