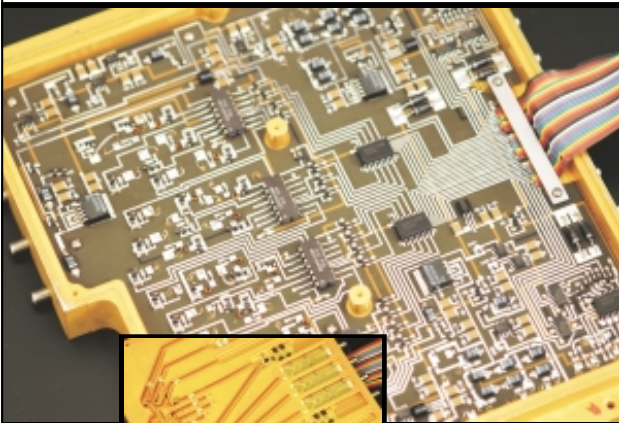




New Product

CSAX9122

Output Signal Distribution Unit



- **Multi-Function Assembly**
- **Operating Frequency: 10 MHz to 4000 MHz**
- **Phase Matched**
- **Four-Bit Attenuator with Driver**
- **Low-Noise Amplifier**
- **Equalizer**
- **Passive Elements (2 Way Power Divider / 6dB Coupler)**
- **SP8T RF Switch with Driver**
- **Assembly Techniques - Modular Design**

HI-REL Space Application