

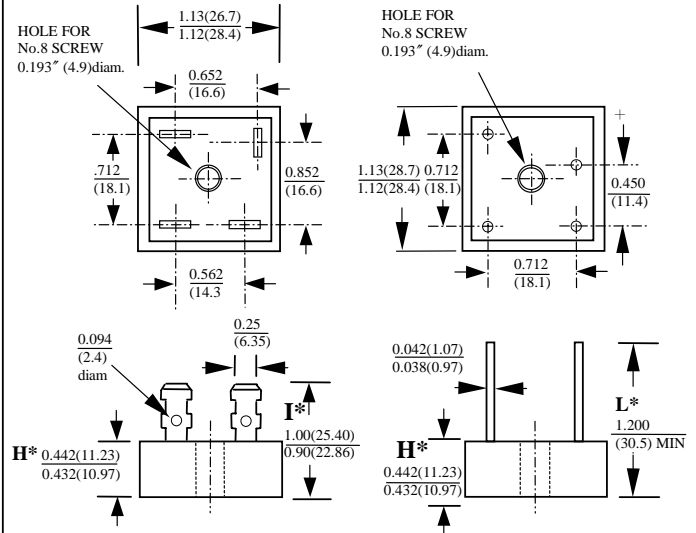
10A SILICON SINGLE-PHASE BRIDGE RECTIFIERS

FEATURES

- CURRENT RATING 10A
- REVERSE VOLTAGE RATING UP TO 1000V
- TYPICAL IR LESS THAN 1μA
- HIGH TEMPERATURE SOLDERING GUARANTEED :
260°C /10 SECOND

MECHANICAL DATA

- CASE : METAL HEAT SINK CASE,ELECTRICALLY INSULATED
- TERMINALS : UNIVERSAL .25" (6.3mm) FASTON
- MOUNTING METHOD : BOLT DOWN ON HEAT SINK WITH SILICON THERMAL COMPOUND BETWEEN BRIDGE AND MOUNTING SURFACE FOR MAXIMUM HEAT TRANSFER EFFICIENCY
- WEIGHT : 20 GRAMS



DIM	MIN	MAX	REMARK
H*	0.295(7.5)	0.311(7.9)	SUFFIX "S" THIN CASE
I*	0.74(18.80)	0.84(21.30)	SUFFIX "S" THIN CASE
L*	1.09(27.89)	-	SUFFIX "S" THIN CASE

DIMENSIONS IN INCHES AND (MILLIMETERS)

MAXIMUM RATINGS AND ELECTRICAL CHARACTERISTICS
RATINGS AT 25°C AMBIENT TEMPERATURE UNLESS OTHERWISE SPECIFIED
SINGLE PHASE, HALF WAVE, 60 HZ, RESISTIVE OR INDUCTIVE LOAD.
FOR CAPACITIVE LOAD, DERATE CURRENT BY 20%

RATINGS	SYMBOL	BP10-005	BP10-01	BP10-02	BP10-04	BP10-06	BP10-08	BP10-10	UNITS
MAXIMUM RECURRENT PEAK REVERSE VOLTAGE	V _{RRM}	50	100	200	400	600	800	1000	V
MAXIMUM RMS VOLTAGE	V _{RMS}	35	70	140	280	420	560	700	V
MAXIMUM DC BLOCKING VOLTAGE	V _{DC}	50	100	200	400	600	800	1000	V
MAXIMUM AVERAGE FORWARD RECTIFIED OUTPUT CURRENT AT TC=55°C	I _O	10.0							A
PEAK FORWARD SURGE CURRENT SINGLE SINE-WAVE SUPERIMPOSED ON RATED LOAD	I _{FSM}	200							A
STORAGE TEMPERATURE RANGE	T _{STG}	- 55 TO + 175							°C
OPERATING TEMPERATURE RANGE	T _{OP}	- 55 TO + 175							°C

ELECTRICAL CHARACTERISTICS (AT T_A =25°C UNLESS OTHERWISE NOTED)

CHARACTERISTICS	SYMBOL	BP10-005	BP10-01	BP10-02	BP10-04	BP10-06	BP10-08	BP10-10	UNITS
MAXIMUM INSTANTANEOUS FORWARD VOLTAGE PER BRIDGE ELEMENT AT SPECIFIED CURRENT	V _F	1.1							V
MAXIMUM REVERSE DC CURRENT AT RATED DC BLOCKING VOLTAGE PER ELEMENT	I _R	10							μA

NOTE : Suffix No. Versus Different Cases And Terminals

TERMINAL	CASE				
	SUFFIX No	NORMAL METAL CASE	THIN METAL CASE	NORMAL PLASTIC CASE ALUMINUM BASE	THIN PLASTIC CASE ALUMINUM BASE
FAST ON TERMINALS		NO SUFFIX	S	P	PS
WIRE LEAD TERMINALS		W	WS	PW	PWS
IN LINE PIN CONFIGURATION		-	-	L	LS

RATINGS AND CHARACTERISTIC CURVES BP10-005 THRU BP10-10

FIG. 1 - MAXIMUM OUTPUT RECTIFIED CURRENT

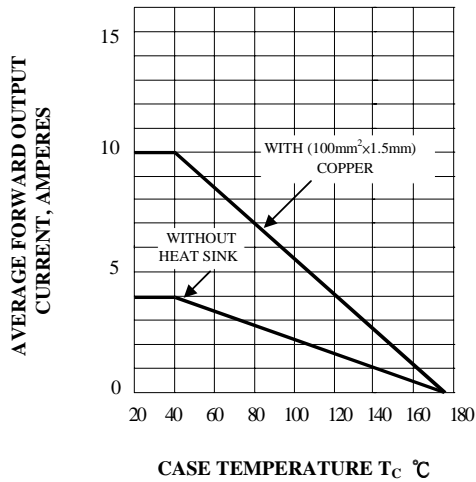


FIG. 4 - MAXIMUM NON-REPETITIVE PEAK FORWARD SURGE CURRENT

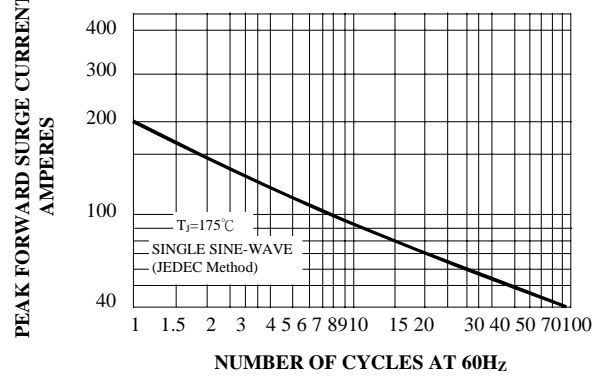


FIG. 2 - TYPICAL REVERS CHARACTERISTICS AT T_J=25°C

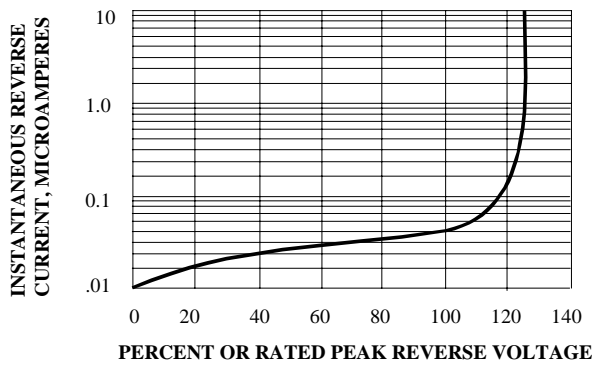


FIG. 5 - TYPICAL JUNCTION CAPACITANCE PER BRIDGE ELEMENT

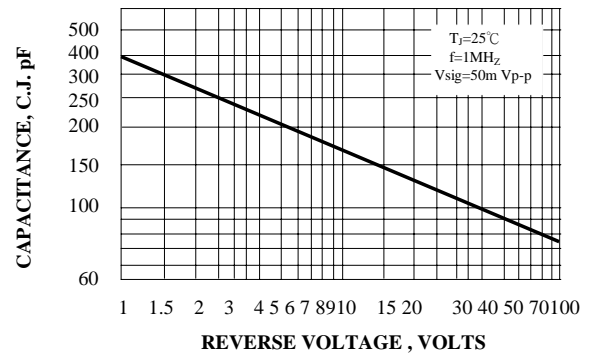
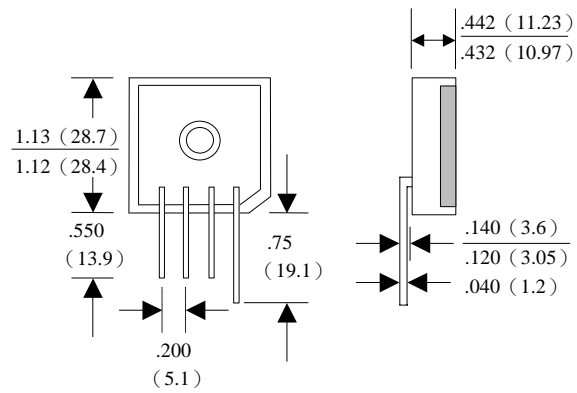
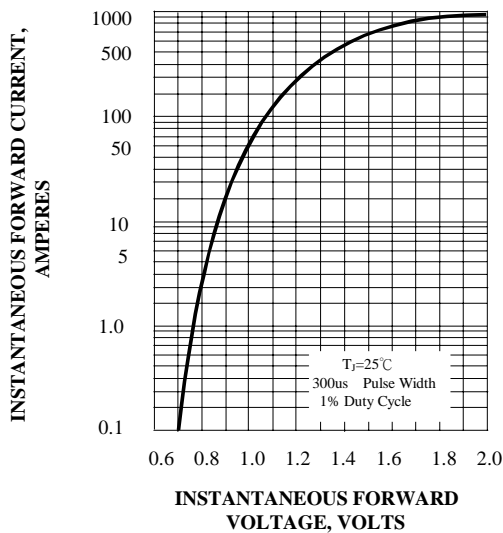


FIG. 3 - TYPICAL INSTANTANEOUS FORWARD CHARACTERISTICS



BP10-L IN LINE PIN CONFIGURATION (PLASTIC CASE)