



SPECIFICATIONS

Electrical Ratings	50mA @ 48VDC
Electrical Life	100,000 cycles typical
Contact Resistance	< 50 mΩ initial
Actuation Force	160 +/- 50gF
Actuator Travel	.25 +/- .1mm
Dielectric Strength	1000Vrms min
Insulation Resistance	> 100MΩ min
Operating Temperature	-40°C to 85°C
Storage Temperature	-40°C to 85°C

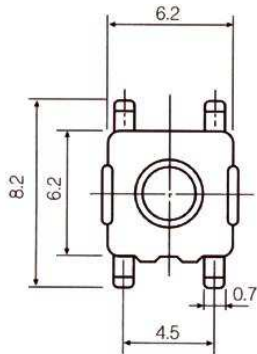
MATERIALS

Actuator	4/6 Nylon
Housing	4/6 Nylon
Cover	Steel
Contacts	Phosphor Bronze, Silver Plated
Terminals	Brass, Silver Plated

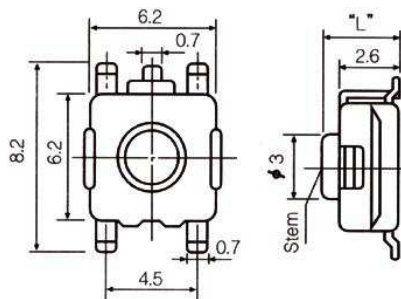
ORDERING INFORMATION

1. Series:	CS1109	2.9
CS1109		
CS1109A w/ grounding tab		
2. Actuator Length "L" (mm):		
2.6		
2.9		
3.1		

DIMENSIONS



CS1109



CS1109A

Part Number	"L" (mm)
CS11092.6	2.6
CS11092.9	2.9
CS11093.1	3.1

Part Number	"L" (mm)
CS1109A2.6	2.6
CS1109A2.9	2.9
CS1109A3.1	3.1

