

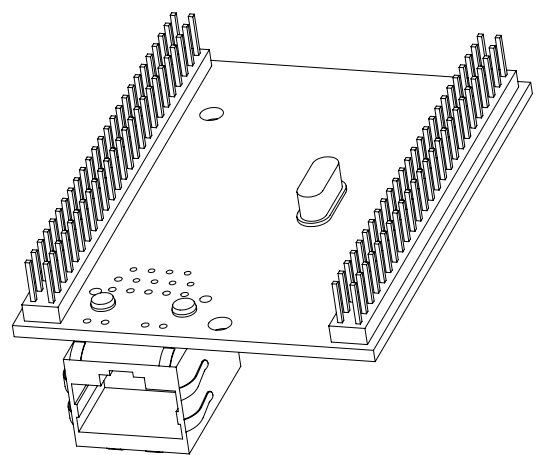
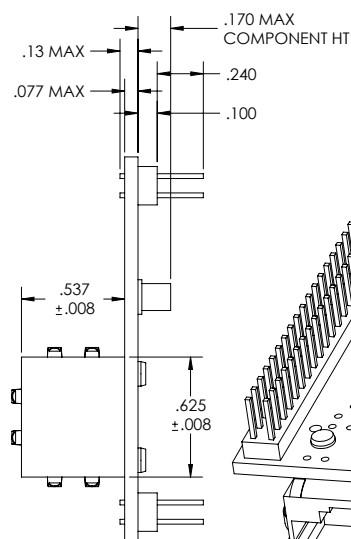
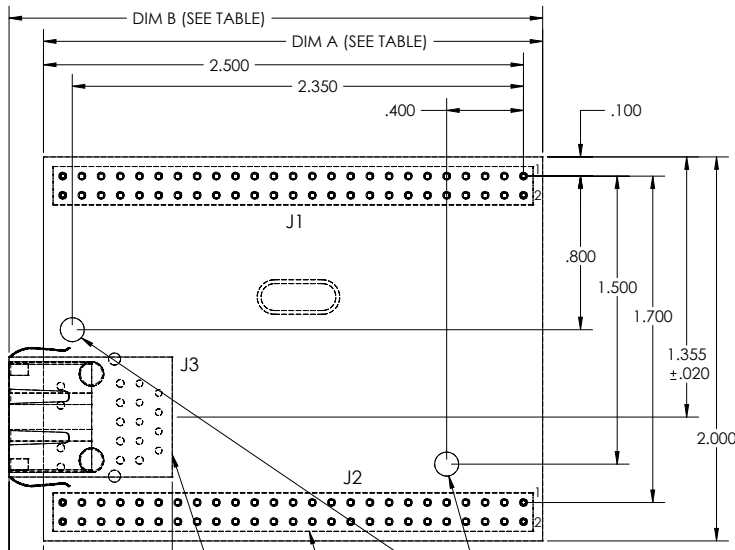
NOTES: UNLESS OTHERWISE SPECIFIED

1. STANDOFFS SHOULD BE OF A MINIMUM LENGTH TO ACCOMMODATE THE HEIGHT OF THE MOTHERBOARD COMPONENTS PLUS .17. APPLICATION EXAMPLES ON SHEETS 2 AND 3 ALLOW FOR MOTHERBOARD COMPONENT HEIGHTS OF .33 AND ZERO RESPECTIVELY.

2. MATING CONNECTORS OR SOCKETS SHOULD ACCOMMODATE THE APPROPRIATE RANGE OF PIN INSERTION DEPTH. THE RANGE IS DEPENDENT ON STANDOFF LENGTH AND CONNECTOR HEIGHT. ASSUMING THE TOTAL TOLERANCE FOR THESE DIMENSIONS IS $\pm .010$, THE MINIMUM PIN INSERTION DEPTH WOULD BE $\{ .31 + \text{CONNECTOR HEIGHT} - \text{STANDOFF LENGTH} \}$. THE MAXIMUM DEPTH WOULD BE .05 GREATER THAN THE MINIMUM.

PART NO.	DIM A	DIM B
MOD5234-100IR	2.96 MAX	3.13
MOD5270-100IR	2.61 MAX	2.78
MOD5272-100IR	2.61 MAX	2.78
MOD5282-100IR	2.61 MAX	2.78

REVISIONS				
ZONE	REV	DESCRIPTION	DATE	APPROV
B		REVISED AND REDRAWN	17JUL10	J. PETER



1. $\varnothing .125$ MTG HOLE
 OPTIONAL: USE .19 OD #4 INSULATING STANDOFF ON FAR SIDE, AND .22 MAX OD #4 INSULATING WASHER WITH #4 PAN HEAD SCREW ON NEAR SIDE.

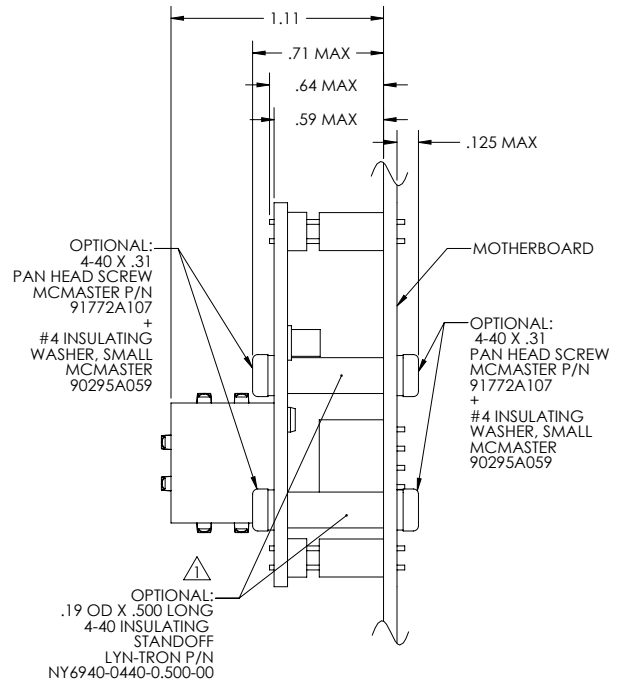
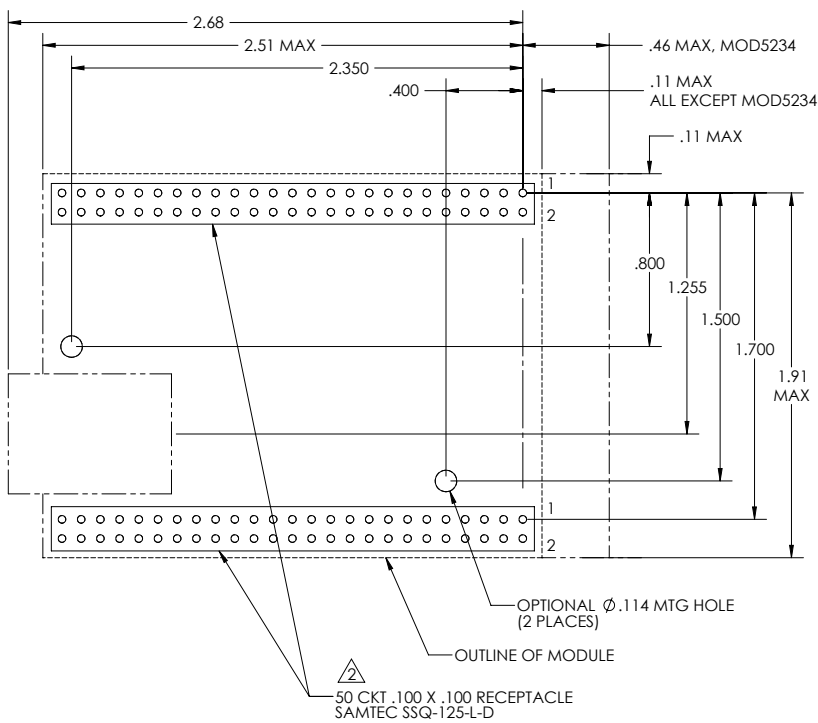
2. 50 POSITION .100 X .100 HEADER MOUNTED ON FAR SIDE (2 PLACES)

RJ-45 JACK (NEAR SIDE)

SOLDER SIDE OF MODULE SHOWN

<p>THIRD ANGLE PROJECTION</p>		<p>PROPRIETARY INFORMATION</p> <p>NOT TO BE COPIED, USED, OR DISCLOSED WITHOUT WRITTEN PERMISSION FROM NETBURNER</p>		<p>5405 MOREHOUSE DR., STE 200 SAN DIEGO, CA. 92121 (858) 558-0293</p>	
<p>CUSTOMER DRAWING MODEL 52XX-100</p>		<p>CAD/CAM DRAWING DO NOT MANUALLY REVISE OR UPDATE</p>		<p>850460</p>	
<p>J. PETER 17JUL10</p>		<p>D</p>		<p>1:1</p>	

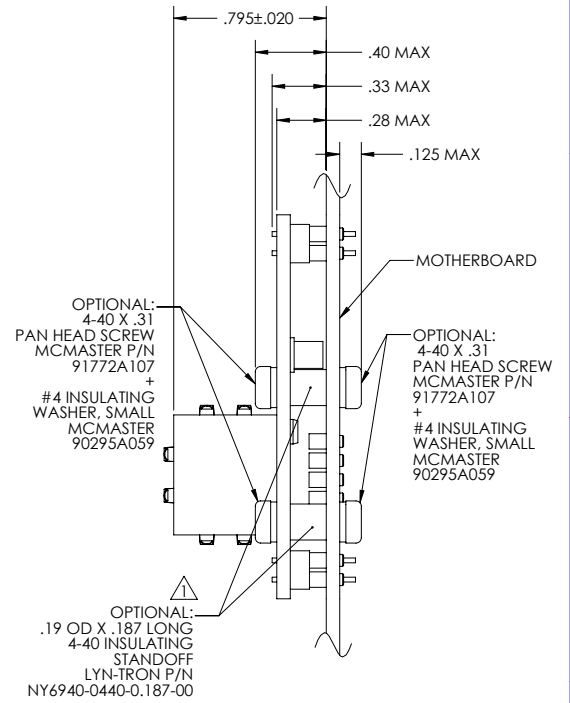
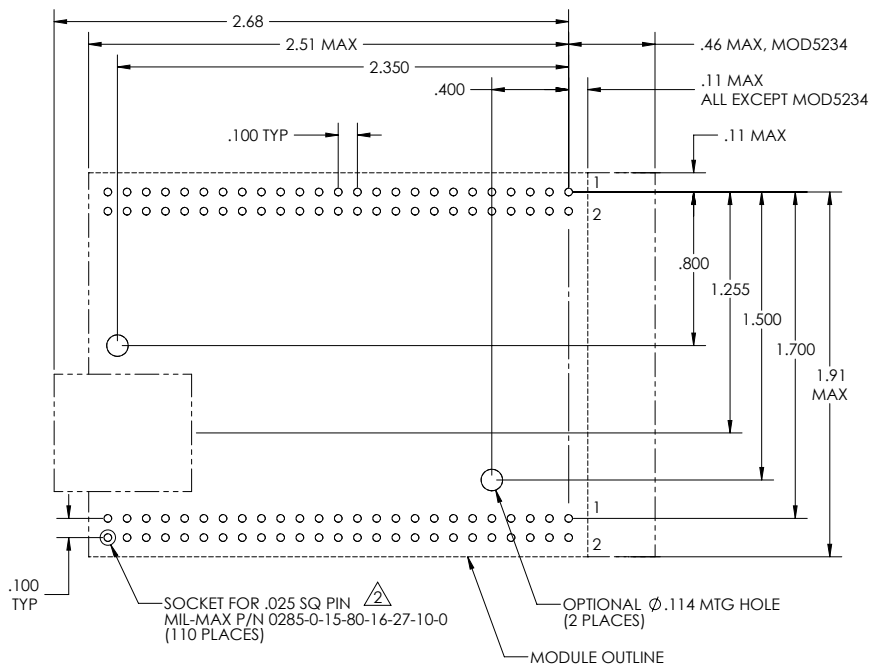
APPLICATION SAMPLE 1
.33 MAXIMUM MOTHERBOARD COMPONENT HEIGHT



COMPONENT SIDE OF MOTHERBOARD SHOWN

PROPRIETARY INFORMATION NOT TO BE COPIED, USED, OR DISCLOSED WITHOUT WRITTEN PERMISSION FROM NETBURNER	5405 MOREHOUSE DR., STE 200 SAN DIEGO, CA. 92121 (858) 558-0293	
	CUSTOMER DRAWING MODEL 52XX-100	
CAD/CAM DRAWING DO NOT MANUALLY REVISE OR UPDATE	REV: B	850460
DATE: 2/1	SHEET 2 OF 3	

**APPLICATION SAMPLE 2
MINIMUM STACK HEIGHT (ZERO MOTHERBOARD COMPONENT HEIGHT)**



COMPONENT SIDE OF MOTHERBOARD SHOWN

PROPRIETARY INFORMATION NOT TO BE COPIED, USED, OR DISCLOSED WITHOUT WRITTEN PERMISSION FROM NETBURNER	5405 MOREHOUSE DR., STE 200 SAN DIEGO, CA. 92121 (858) 558-0293	
	CUSTOMER DRAWING MODEL 52XX-100	
CAD/CAM DRAWING DO NOT MANUALLY REVISE OR UPDATE	REV: B	850460
SCALE: 1:1	SHEET 3 OF 3	