

# Spread Spectrum Clock Generator

## MB88162

### ■ DESCRIPTION

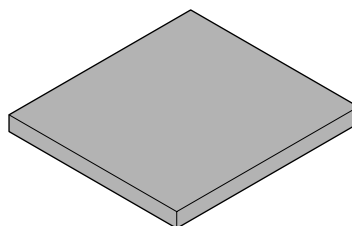
MB88162 is a clock generator for EMI (Electro Magnetic Interference) reduction. The peak of unnecessary radiation noise (EMI) can be attenuated by making the oscillation frequency slightly modulate periodically with the internal modulator.

### ■ FEATURES

- Input frequency : 12 MHz to 28 MHz (Multiplied by 1), 20 MHz to 42 MHz (Multiplied by 4)
- Multiplication rate : 1, 4
- Output frequency : 12 MHz to 28 MHz (Multiplied by 1), 80 MHz to 168 MHz (Multiplied by 4)
- Modulation rate : no modulation,  $\pm 0.5\%$ ,  $\pm 1.0\%$ ,  $\pm 2.0\%$ ,  $-1.0\%$ ,  $-2.0\%$ ,  $-4.0\%$  (The terminal can be selected.)
- Equipped with oscillation circuit : Range of oscillation 12 MHz to 42 MHz
- Built-in oscillation stabilization capacitance : 4 pF (Typ)
- Modulation clock output Duty : 40% to 60%
- Modulation clock Cycle-Cycle Jitter : Less than 100 ps
- Low power consumption by CMOS process : 7.0 mA (24 MHz : no load, Typ-sample, Typ-condition)
- Power supply voltage : 2.7 V to 3.6 V (Multiplied by 1), 3.0 V to 3.6 V (Multiplied by 4)
- Operating temperature :  $-40\text{ }^{\circ}\text{C}$  to  $+85\text{ }^{\circ}\text{C}$
- Package : BCC 18-pin

### ■ PACKAGE

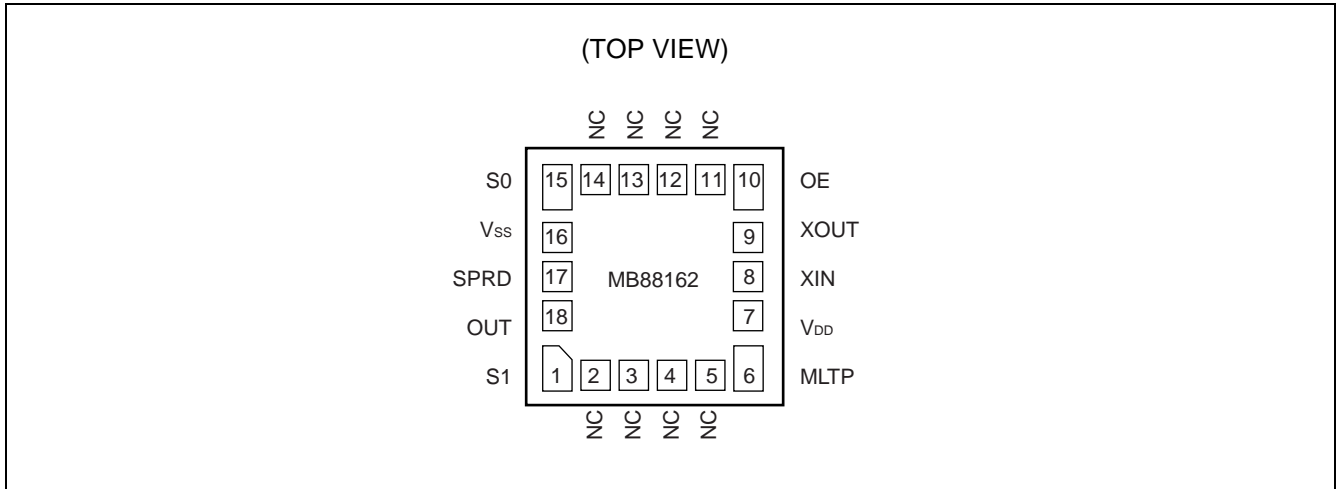
18-pin plastic BCC



(LCC-18P-M05)

# MB88162

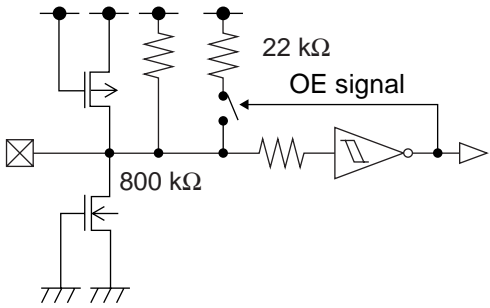
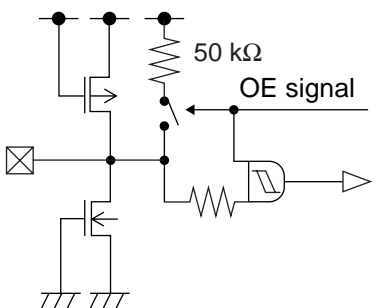
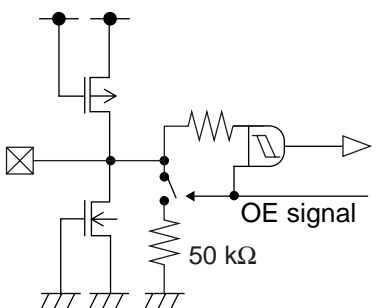
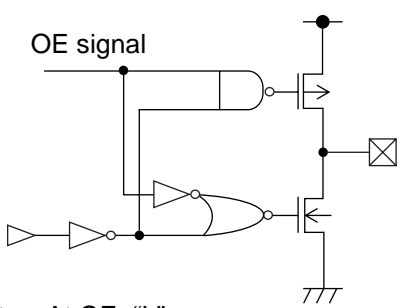
## ■ PIN ASSIGNMENT



## ■ PIN DESCRIPTION

Pin no.	Pin name	I/O	Description
1	S1	I	Modulation rate setting pin (with pull-up resistance)
2	NC	—	Non-connection pin (do not connect anything)
3	NC	—	Non-connection pin (do not connect anything)
4	NC	—	Non-connection pin (do not connect anything)
5	NC	—	Non-connection pin (do not connect anything)
6	MLTP	I	Multiplication rate setting pin (with pull-down resistance)
7	V <sub>DD</sub>	—	Power supply voltage pin
8	XIN	I	Resonator connection pin/clock input pin
9	XOUT	O	Resonator connection pin
10	OE	I	Clock output enable pin (with pull-up resistance)
11	NC	—	Non-connection pin (do not connect anything)
12	NC	—	Non-connection pin (do not connect anything)
13	NC	—	Non-connection pin (do not connect anything)
14	NC	—	Non-connection pin (do not connect anything)
15	S0	I	Modulation rate setting pin (with pull-up resistance)
16	V <sub>SS</sub>	—	GND pin
17	SPRD	I	Modulation type setting pin (with pull-up resistance)
18	OUT	O	Modulation clock output pin (OE= "L" Hi-Z output)

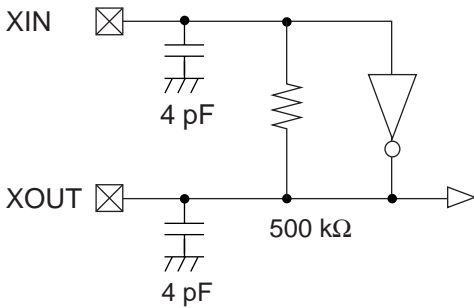
## ■ I/O CIRCUIT TYPE

Pin	Circuit type	Remarks
OE	 <p>Note : At OE="L" 22kΩ Pull Up cut</p>	<ul style="list-style-type: none"> <li>• With pull-up resistor</li> <li>• The value of pull-up resistor is switched by the input level of OE signal.</li> <li>• 800 kΩ at OE="L" (Typ)</li> <li>• 22 kΩ at OE="H" (Typ)</li> <li>• CMOS hysteresis input</li> </ul>
S0, S1, SPRD	 <p>Note : At OE="L" Pull Up cut</p>	<ul style="list-style-type: none"> <li>• With pull-up resistor 50 kΩ (Typ)</li> <li>• CMOS hysteresis input</li> <li>• Pull-up resistor is disconnected at OE="L", and internal signal is fixed to "L".</li> </ul>
MLTP	 <p>Note : At OE="L" Pull Down cut</p>	<ul style="list-style-type: none"> <li>• With pull-down resistor 50 kΩ (Typ)</li> <li>• CMOS hysteresis input</li> <li>• Pull-down resistor is disconnected at OE="L", and internal signal is fixed to "L".</li> </ul>
OUT	 <p>Note : At OE="L" Hi-Z output</p>	<ul style="list-style-type: none"> <li>• CMOS output</li> <li>• <math>I_{OL} = 8.0 \text{ mA}</math></li> <li>• Hi-Z output at OE = "L"</li> </ul>

(Continued)

# MB88162

(Continued)

Pin	Circuit type	Remarks
XIN, XOUT	 <p>The diagram shows an oscillation circuit. The XIN pin is connected to a 4 pF capacitor. The XOUT pin is connected to a 4 pF capacitor. A 500 kΩ resistor is connected between the XIN and XOUT nodes. The XOUT node is also connected to the input of an inverter, which has its output connected back to the XOUT node.</p>	<ul style="list-style-type: none"><li>• Oscillation circuit</li><li>• Built-in feedback resistance : 500 kΩ (Typ)</li><li>• Built-in oscillation stabilization capacitance : 4 pF (Typ)</li></ul>

## ■ HANDLING DEVICES

### Preventing Latch-up

A latch-up can occur if, on this device, (a) a voltage higher than power supply voltage or a voltage lower than GND is applied to an input or output pin or (b) a voltage higher than the rating is applied between power supply and GND. The latch-up, if it occurs, significantly increases the power supply current and may cause thermal destruction of an element. When you use this device, be very careful not to exceed the maximum rating.

### Handling unused pins

Do not leave an unused input pin open, since it may cause a malfunction. Handle by, using a pull-up or pull-down resistor.

### Power supply pins

Please design connecting the power supply pin of this device by as low impedance as possible from the current supply source.

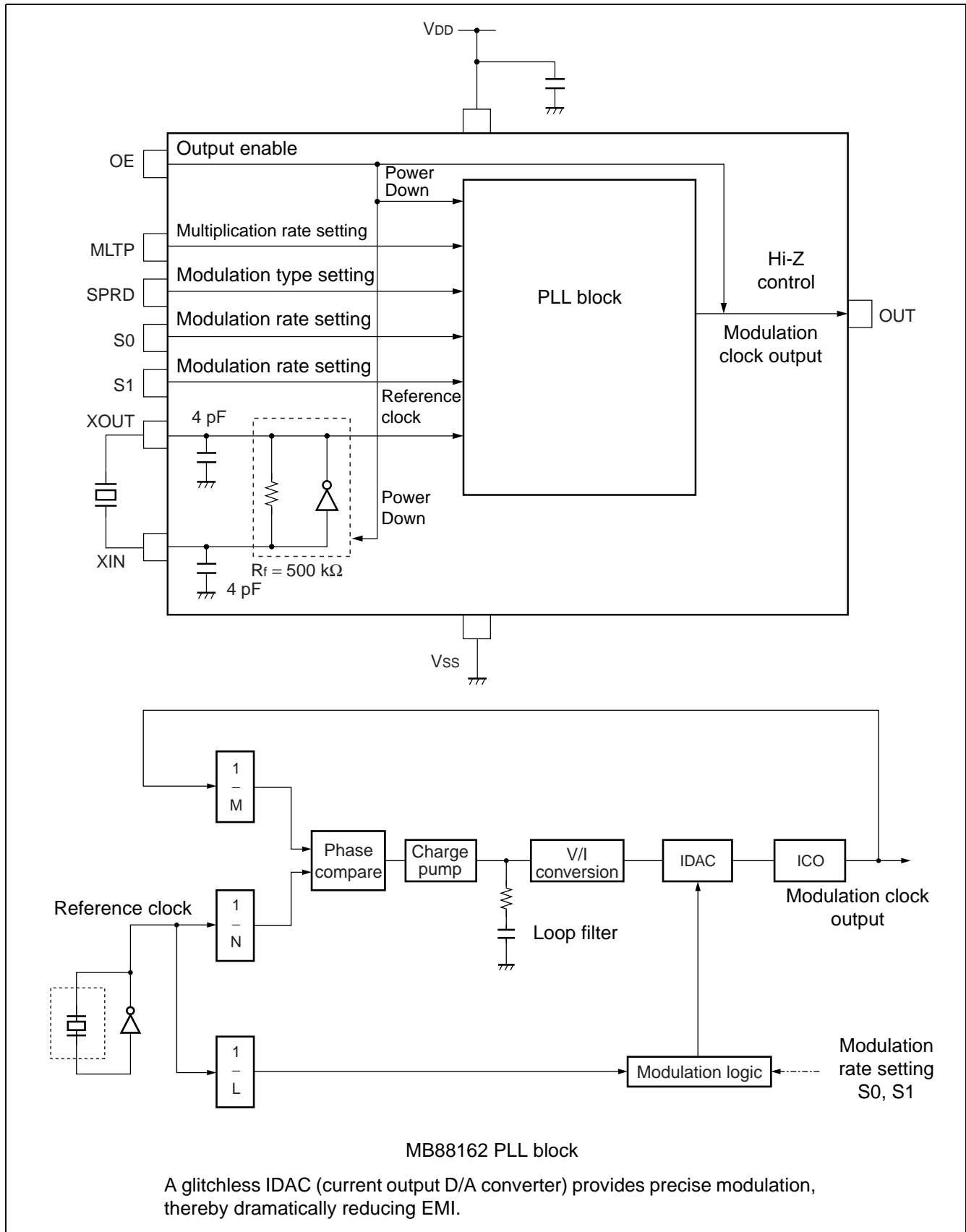
We recommend connecting electrolytic capacitor (about 10  $\mu$ F) and the ceramic capacitor (about 0.01  $\mu$ F) in parallel between power supply and GND near the device, as a bypass capacitor.

### Oscillation circuit

Noise near the XIN pin and XOUT pin may cause the device to malfunction. Design printed circuit boards so that electric wiring of XIN pin or XOUT pin and the resonator do not intersect other wiring.

Design the printed circuit board that surrounds the XIN pin and XOUT pin with ground.

## ■ BLOCK DIAGRAM



## ■ PIN SETTING

After the pin setting is changed, the stabilization wait time of the modulation clock is required. The stabilization wait time of the modulation clock takes the maximum value of Lock-Up time in “• AC Characteristics” in

### ■ ELECTRICAL CHARACTERISTICS.

Each setting pin contains the pull-up resistor or pull-down resistor. Therefore, these pins is set to default state for input opened.

### MLTP multiplication setting

MLTP	Multiplication rate	Input Frequency	Output Frequency	Remarks
L	Multiplied by 1	12 MHz to 28 MHz	12 MHz to 28 MHz	Default
H	Multiplied by 4	20 MHz to 42 MHz	80 MHz to 168 MHz	—

Note : Set MLTP pin to “L” for input opened because MLTP pin has the pull-down resistor.

### OE clock output enable

OE	Status	Remarks
L	Modulation clock output (OUT pin) Hi-Z/Power down status	—
H	Operation status	Default

Note : When OE pin is set to “L”, all oscillation circuits/PLL stop and enter power down mode, low-power consumption mode. Modulation clock output (OUT pin) becomes Hi-Z state during the power down. Set OE pin to “H” for input opened because OE pin has the pull-up resistor.

### SPRD modulation type setting

SPRD	Modulation type	Remarks
L	Center spread	—
H	Down spread	Default

Note : Set SPRD pin to “H” for input opened because SPRD pin has the pull-up resistor.

### S0/S1 modulation rate setting

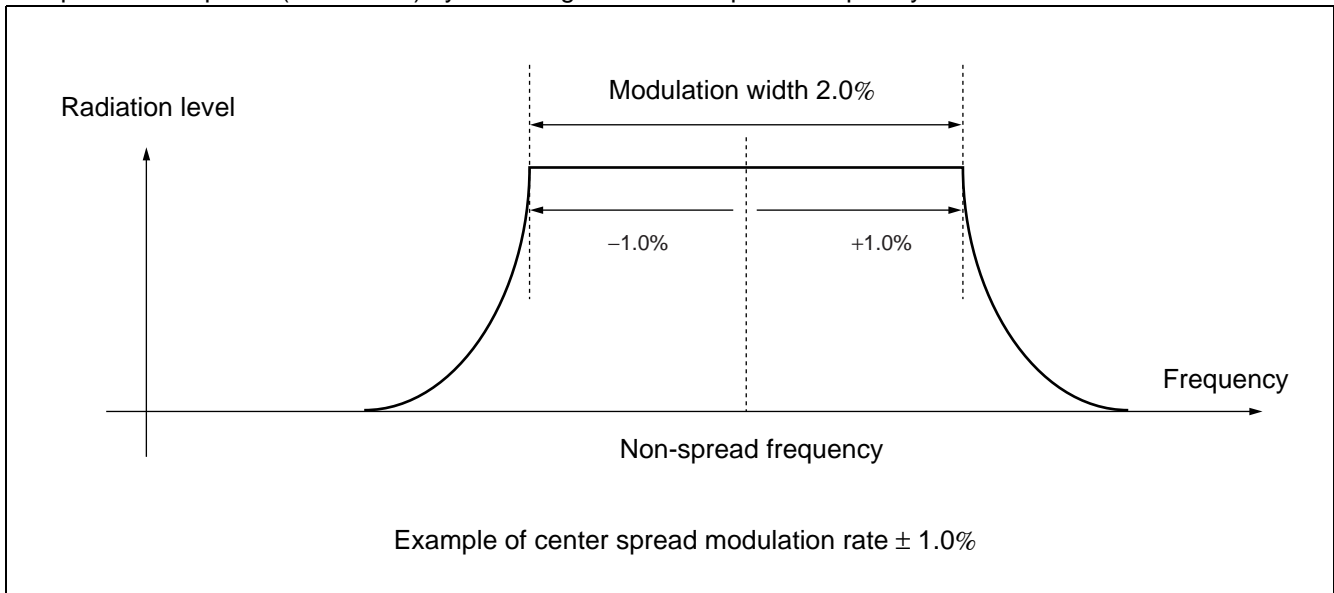
S1	S0	Modulation rate		Remarks
		At down spread	At center spread	
L	L	No modulation	No modulation	—
L	H	– 1.0%	± 0.5%	—
H	L	– 2.0%	± 1.0%	—
H	H	– 4.0%	± 2.0%	Default

Note : Set S1 and S0 pins to “H” for input opened because the pins have the pull-up resistor.

# MB88162

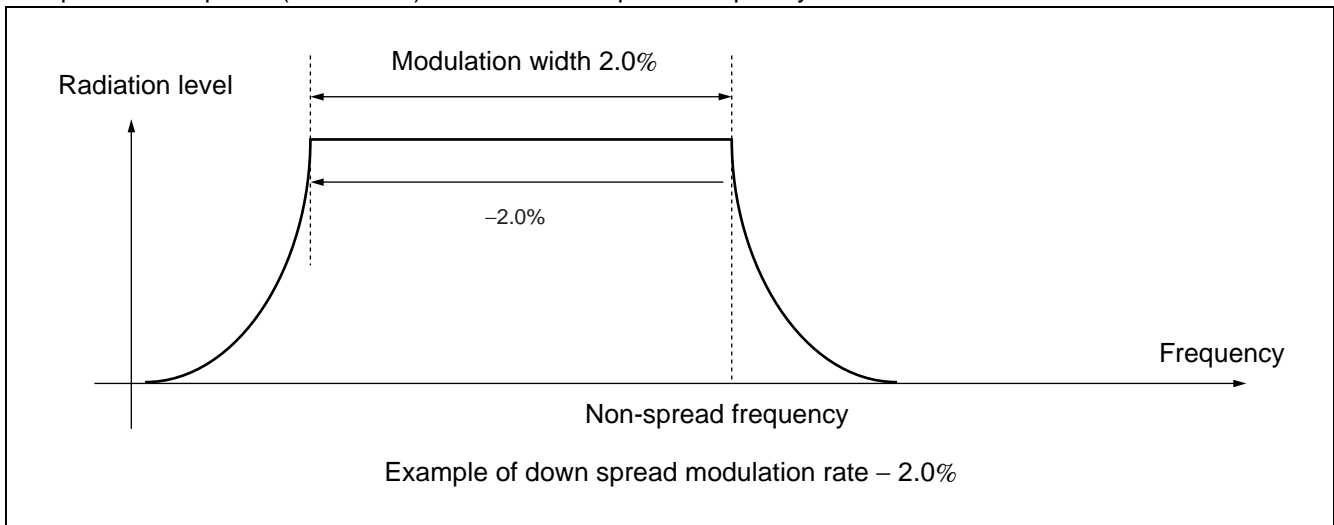
- Center spread

Spectrum is spread (modulated) by centering on the non-spread frequency.



- Down spread

Spectrum is spread (modulated) below the non-spread frequency.



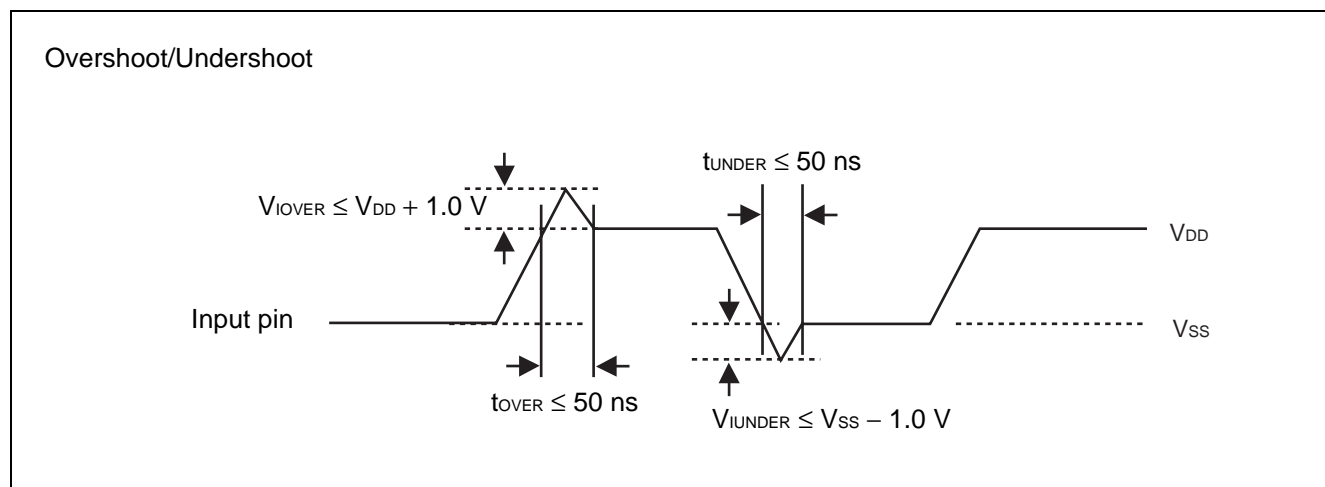


## ■ ABSOLUTE MAXIMUM RATINGS

Parameter	Symbol	Rating		Unit
		Min	Max	
Power supply voltage*	$V_{DD}$	- 0.5	+ 4.0	V
Input voltage*	$V_I$	$V_{SS} - 0.5$	$V_{DD} + 0.5$	V
Output voltage*	$V_O$	$V_{SS} - 0.5$	$V_{DD} + 0.5$	V
Storage temperature	$T_{ST}$	- 55	+ 125	°C
Operation junction temperature	$T_J$	- 40	+ 125	°C
Output current	$I_O$	- 14	+ 14	mA
Overshoot	$V_{IOVER}$	—	$V_{DD} + 1.0$ ( $t_{OVER} \leq 50$ ns)	V
Undershoot	$V_{IUNDER}$	$V_{SS} - 1.0$ ( $t_{UNDER} \leq 50$ ns)	—	V

\* : The parameter is based on  $V_{SS} = 0.0$  V.

**WARNING:** Semiconductor devices can be permanently damaged by application of stress (voltage, current, temperature, etc.) in excess of absolute maximum ratings. Do not exceed these ratings.



## RECOMMENDED OPERATING CONDITIONS

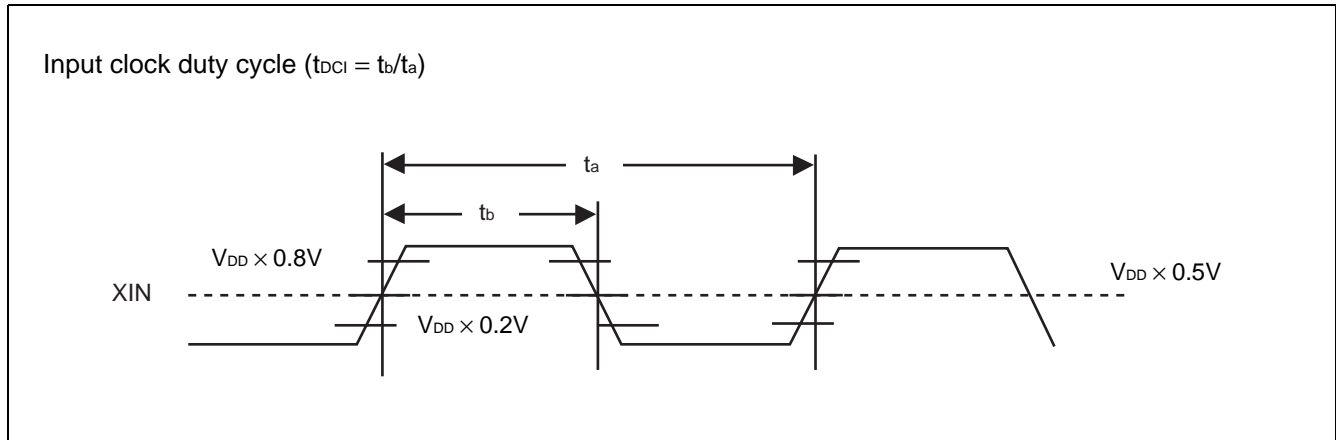
( $V_{SS} = 0.0\text{ V}$ )

Parameter	Symbol	Pin	Conditions	Value			Unit
				Min	Typ	Max	
Power supply voltage	$V_{DD}$	$V_{DD}$	At MLTP = "L"	2.7	3.3	3.6	V
			At MLTP = "H"	3.0	3.3	3.6	
"H" level input voltage	$V_{IH}$	XIN, MLTP, OE, SPRD, S1, S0	—	$V_{DD} \times 0.80$	—	$V_{DD} + 0.3$	V
"L" level input voltage	$V_{IL}$		—	$V_{SS}$	—	$V_{DD} \times 0.20$	V
Input clock duty cycle	$t_{DCI}$	XIN	Input frequency 12 MHz to 42 MHz	40	50	60	%
Operating temperature	$T_a$	—	—	- 40	—	+ 85	°C

**WARNING:** The recommended operating conditions are required in order to ensure the normal operation of the semiconductor device. All of the device's electrical characteristics are warranted when the device is operated within these ranges.

Always use semiconductor devices within their recommended operating condition ranges. Operation outside these ranges may adversely affect reliability and could result in device failure.

No warranty is made with respect to uses, operating conditions, or combinations not represented on the data sheet. Users considering application outside the listed conditions are advised to contact their FUJITSU representatives beforehand.



## ■ ELECTRICAL CHARACTERISTICS

- DC Characteristics

( $T_a = -40\text{ }^{\circ}\text{C}$  to  $+85\text{ }^{\circ}\text{C}$ ,  $V_{DD} = 2.7\text{ V}$  to  $3.6\text{ V}$ ,  $V_{SS} = 0.0\text{ V}$ )

Parameter	Symbol	Pin	Conditions	Value			Unit
				Min	Typ	Max	
Power supply current	$I_{CC}$	$V_{DD}$	24 MHz output no load capacitance	—	7.0	11.0	mA
Power down current	$I_{PD}$	$V_{DD}$	At power down (At OE="L")	—	5	20	$\mu\text{A}$
Output voltage	$V_{OH}$	OUT	"H" level output, $I_{OH} = -8\text{ mA}$	$0.8 \times V_{DD}$	—	$V_{DD}$	V
	$V_{OL}$		"L" level output, $I_{OL} = 8\text{ mA}$	$V_{SS}$	—	$0.2 \times V_{DD}$	V
Output impedance	$Z_{OC}$	OUT	MLTP = L, 12 MHz to 28 MHz output, $V_{DD} = 2.7\text{ V}$ to $3.6\text{ V}$	—	30	—	$\Omega$
			MLTP = H, 80 MHz to 168 MHz output, $V_{DD} = 3.0\text{ V}$ to $3.6\text{ V}$	—	20	—	$\Omega$
Load capacitance	$C_L$	OUT	MLTP = L, 12 MHz to 28 MHz output, $V_{DD} = 2.7\text{ V}$ to $3.6\text{ V}$	—	—	15	pF
			MLTP = H, 80 MHz to 168 MHz output, $V_{DD} = 3.0\text{ V}$ to $3.6\text{ V}$	—	—	15	pF
Built-in oscillation stabilization capacitance	$C_{OSC}$	XIN, XOUT	—	—	4	—	pF
Input pull-up resistance	$R_{PUOE_H}$	OE	$V_{IH} = 0.8 \times V_{DD}$	10	25	100	k $\Omega$
	$R_{PUOE_L}$	OE	$V_{IL} = 0.0\text{ V}$	500	800	1200	k $\Omega$
	$R_{PU}$	SPRD, S1, S0	$V_{IL} = 0.0\text{ V}$	25	50	200	k $\Omega$
Input pull-down resistance	$R_{PD}$	MLTP	$V_{IH} = V_{DD}$	25	50	200	k $\Omega$

Note : When OE pin is set to "L", the pull-up resistor connected to SPRD pin, S1 pin, and S0 pin and the pull-down resistor connected to MLTP pin are disconnected, and internal signal is fixed to "L".  
See "■ I/O CIRCUIT TYPE" for details.

# MB88162

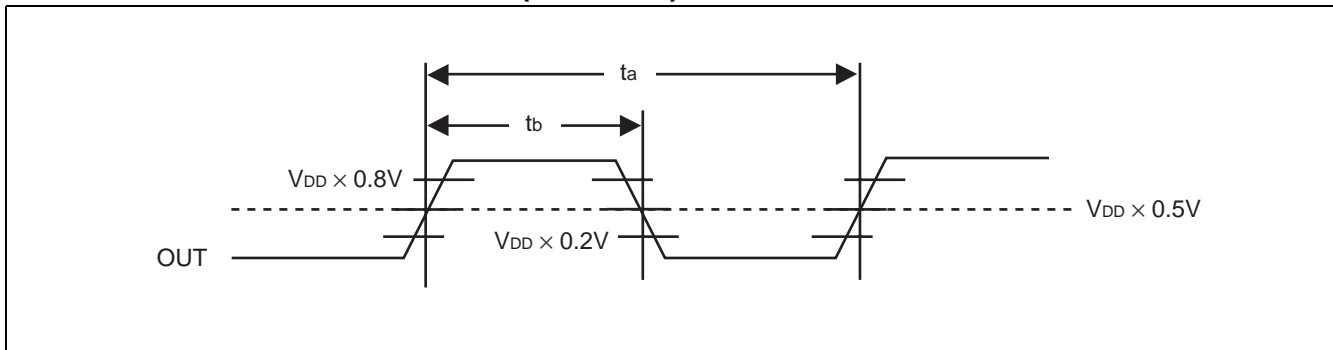
- AC Characteristics

(Ta = -40 °C to +85 °C, V<sub>DD</sub> = 2.7 V to 3.6 V, V<sub>SS</sub> = 0.0 V)

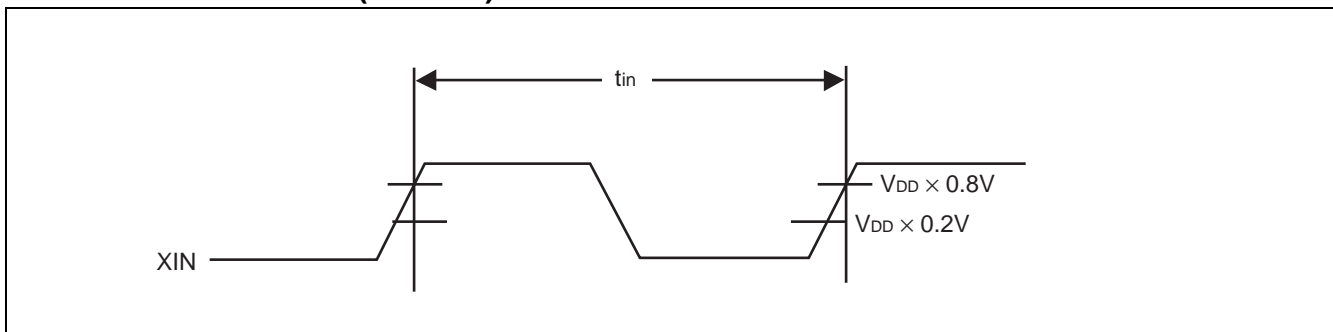
Parameter	Symbol	Pin	Conditions	Value			Unit
				Min	Typ	Max	
Input frequency	f <sub>in</sub>	XIN	MLTP= "L", V <sub>DD</sub> = 2.7 V to 3.6 V, Crystal oscillation input	12	—	28	MHz
			MLTP= "H", V <sub>DD</sub> = 3.0 V to 3.6 V, Crystal oscillation input	20	—	42	
Crystal oscillation frequency	f <sub>x</sub>	XIN, XOUT	Fundamental oscillation, MLTP= "L", V <sub>DD</sub> = 2.7 V to 3.6 V	12	—	28	MHz
			Fundamental oscillation, MLTP= "H", V <sub>DD</sub> = 3.0 V to 3.6 V	20	—	42	
Output frequency	f <sub>OUT</sub>	OUT	MLTP= "L", V <sub>DD</sub> = 2.7 V to 3.6 V	12	—	28	MHz
			MLTP= "H", V <sub>DD</sub> = 3.0 V to 3.6 V	80	—	168	
Output clock rise time	t <sub>r</sub>	OUT	0.2 × V <sub>DD</sub> to 0.8 × V <sub>DD</sub> Load capacitance 15 pF	0.4	—	4.0	ns
Output clock fall time	t <sub>f</sub>	OUT	0.2 × V <sub>DD</sub> to 0.8 × V <sub>DD</sub> Load capacitance 15 pF	0.4	—	4.0	ns
Output clock duty cycle	t <sub>DCC</sub>	OUT	0.5 × V <sub>DD</sub>	40	—	60	%
Modulation frequency	f <sub>MOD</sub>	OUT	Input frequency at 24MHz, MLTP = "L"	—	32.0	—	kHz
			Input frequency at 24MHz, MLTP = "H"	—	21.3	—	
Lock-Up time	t <sub>LK</sub>	OUT	—	—	4	10	ms
Cycle-Cycle jitter	t <sub>JC</sub>	OUT	Ta= +25°C, V <sub>DD</sub> =3.3V, No load capacitance, Standard deviation σ	—	—	100	ps
Output enable "L" width	t <sub>OELOW</sub>	OE	—	1	—	—	μs
Power supply rise time	t <sub>VDR</sub>	V <sub>DD</sub>	MLTP= L, 0.0 V to 2.7 V	100	—	—	μs
			MLTP= H, 0.0 V to 3.0 V	100	—	—	
Output Hi-Z start time after power down entry	t <sub>PEZ</sub>	OUT	Rise time or fall time of "OE" at 5 ns	—	—	10	ns
Output Hi-Z release time after power down exit	t <sub>PIZ</sub>	OUT	Rise time or fall time of "OE" at 5 ns	0	—	—	ns
Output start time after power down exit	t <sub>PIO</sub>	OUT	Rise time or fall time of "OE" at 5 ns Load capacitance 15 pF	—	—	10	ns

Note : The stabilization wait time of the modulation clock is required after the power is turned on or when the clock output enable setting (OE pin), multiplication setting (MLTP pin) or modulation rate setting (S1 pin and S0 pin) is changed. The stabilization wait time of the modulation clock takes the maximum value of Lock-Up time.

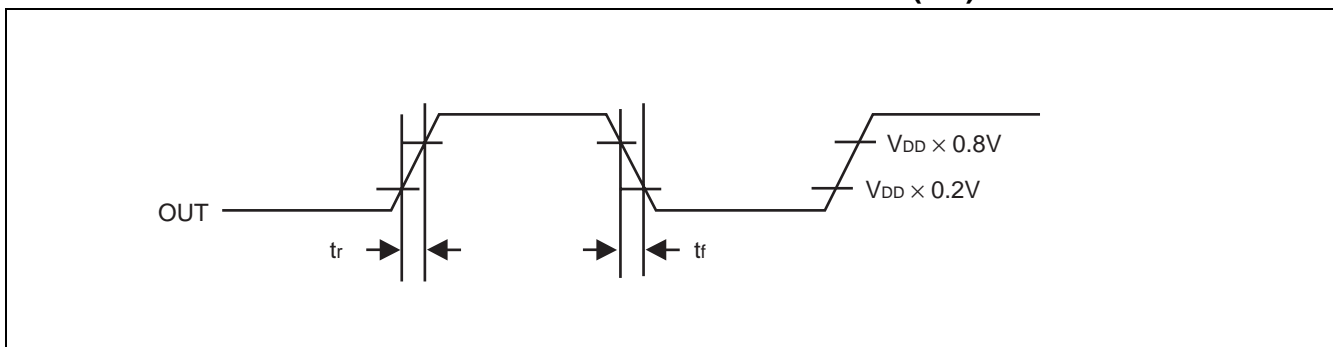
## ■ OUTPUT CLOCK DUTY CYCLE ( $t_{DCC} = t_b/t_a$ )



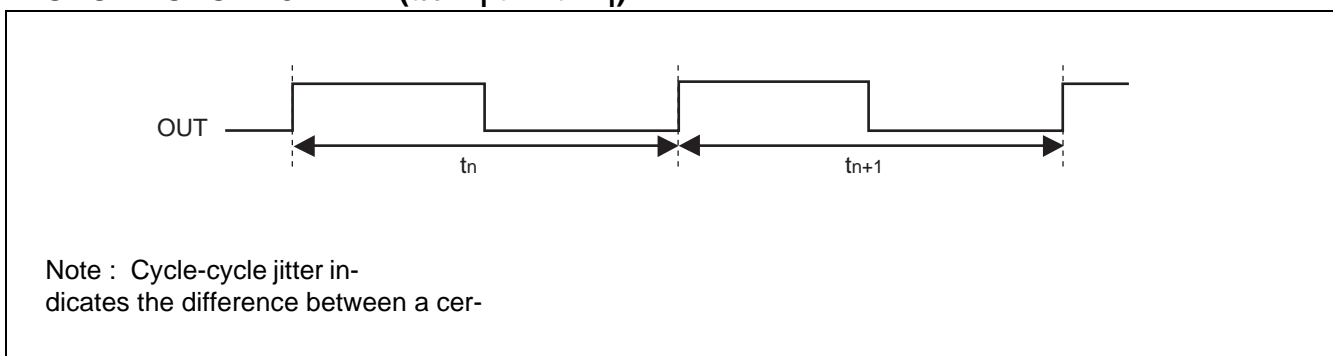
## ■ INPUT FREQUENCY ( $f_{in} = 1/t_{in}$ )



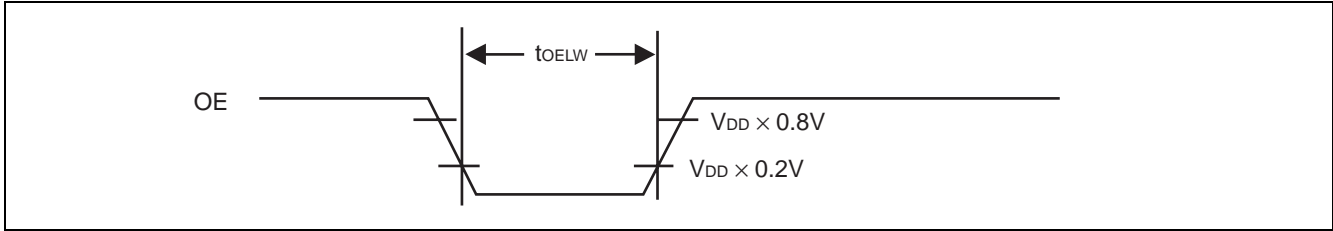
## ■ OUTPUT CLOCK RISE TIME/OUTPUT CLOCK FALL TIME ( $t_r/t_f$ )



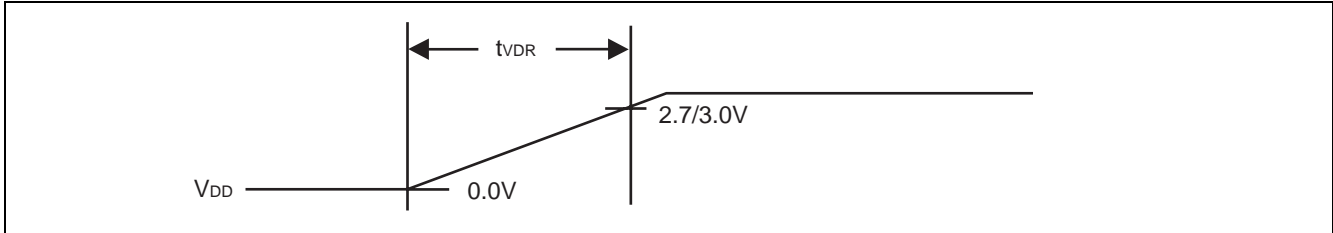
## ■ CYCLE-CYCLE JITTER ( $t_{JC} = |t_n - t_{n+1}|$ )



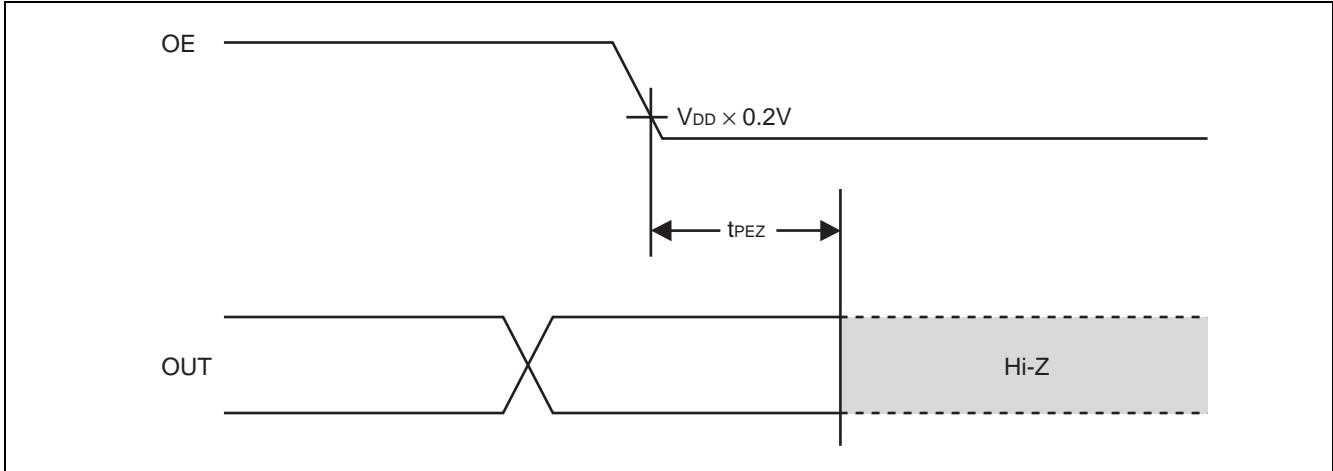
## ■ OUTPUT ENABLE "L" WIDTH ( $t_{OELW}$ )



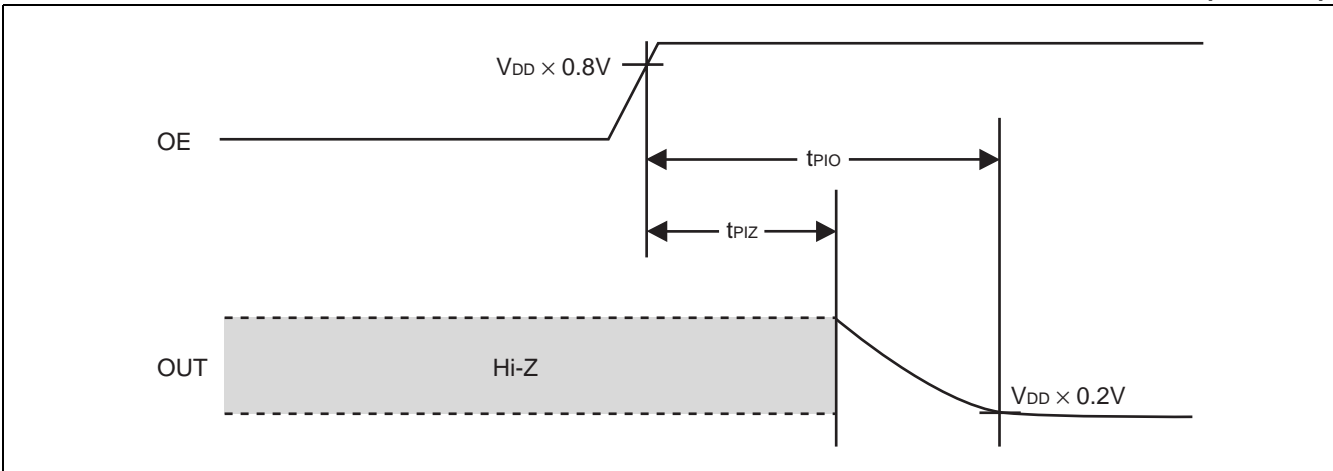
## ■ POWER SUPPLY RISE TIME ( $t_{VDR}$ )



## ■ OUTPUT Hi-Z START TIME AFTER POWER DOWN ENTRY ( $t_{PEZ}$ )

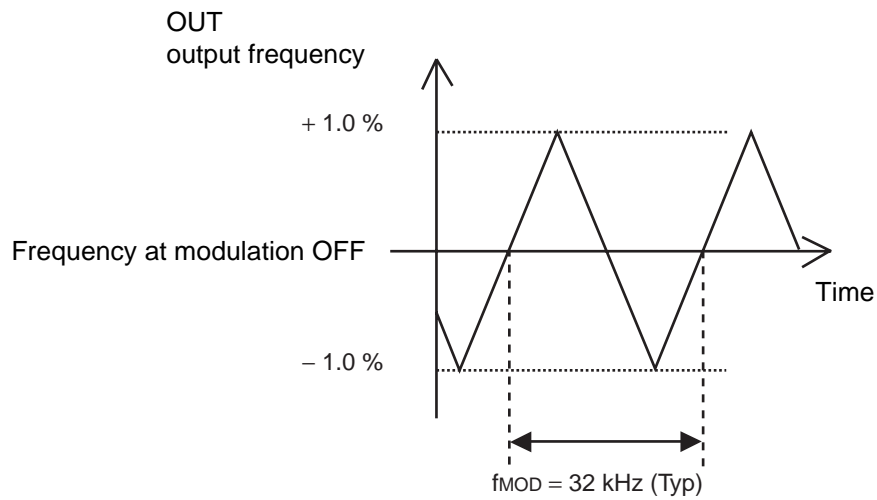


## ■ OUTPUT Hi-Z RELEASE TIME • OUTPUT START TIME AFTER POWER DOWN EXIT ( $t_{PIZ}$ • $t_{PIO}$ )

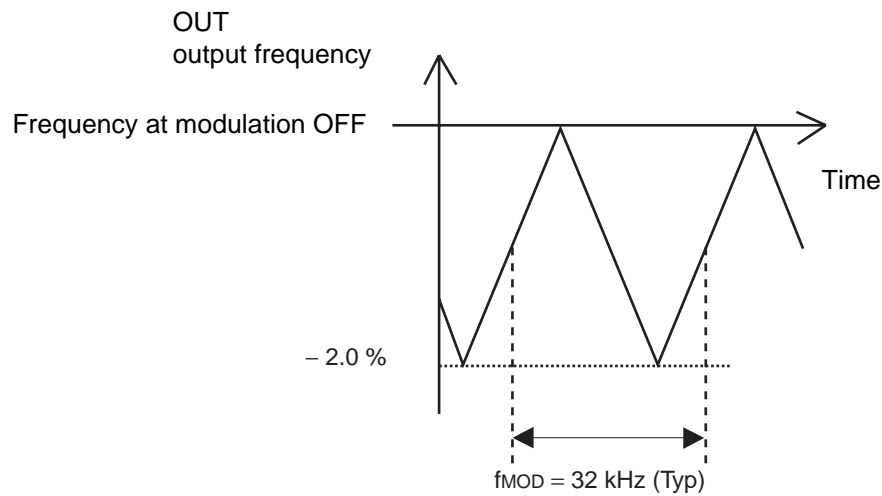


## ■ MODULATION WAVEFORM

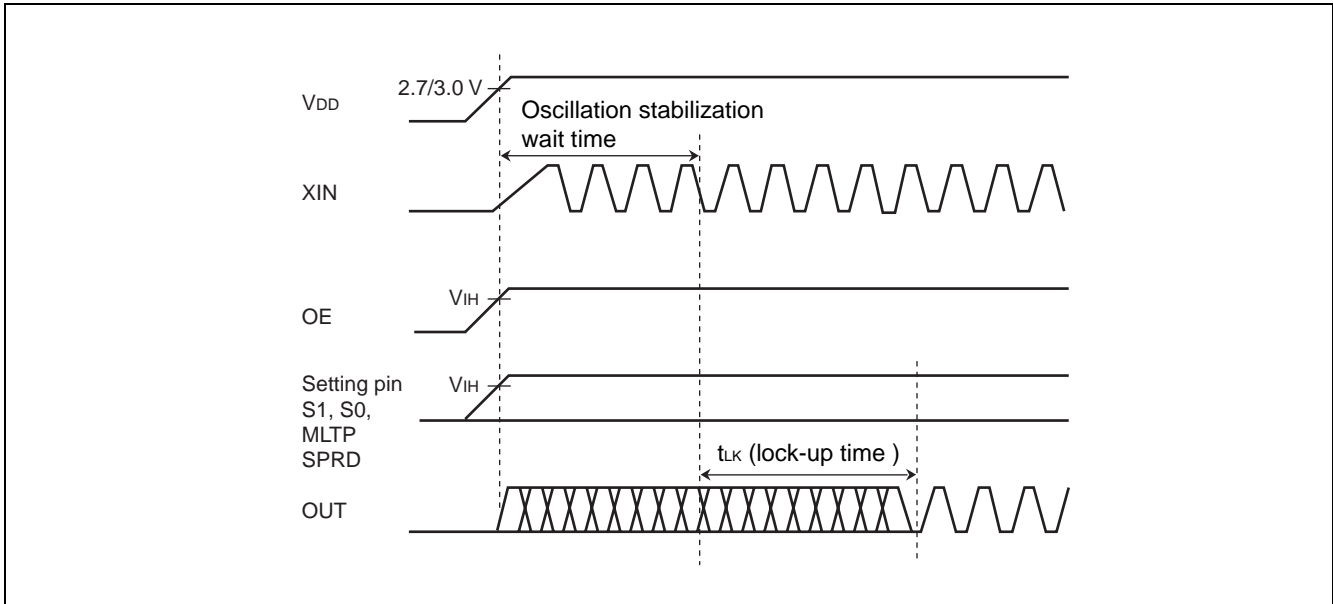
- Modulation rate  $\pm 1.0\%$ , example of center spread



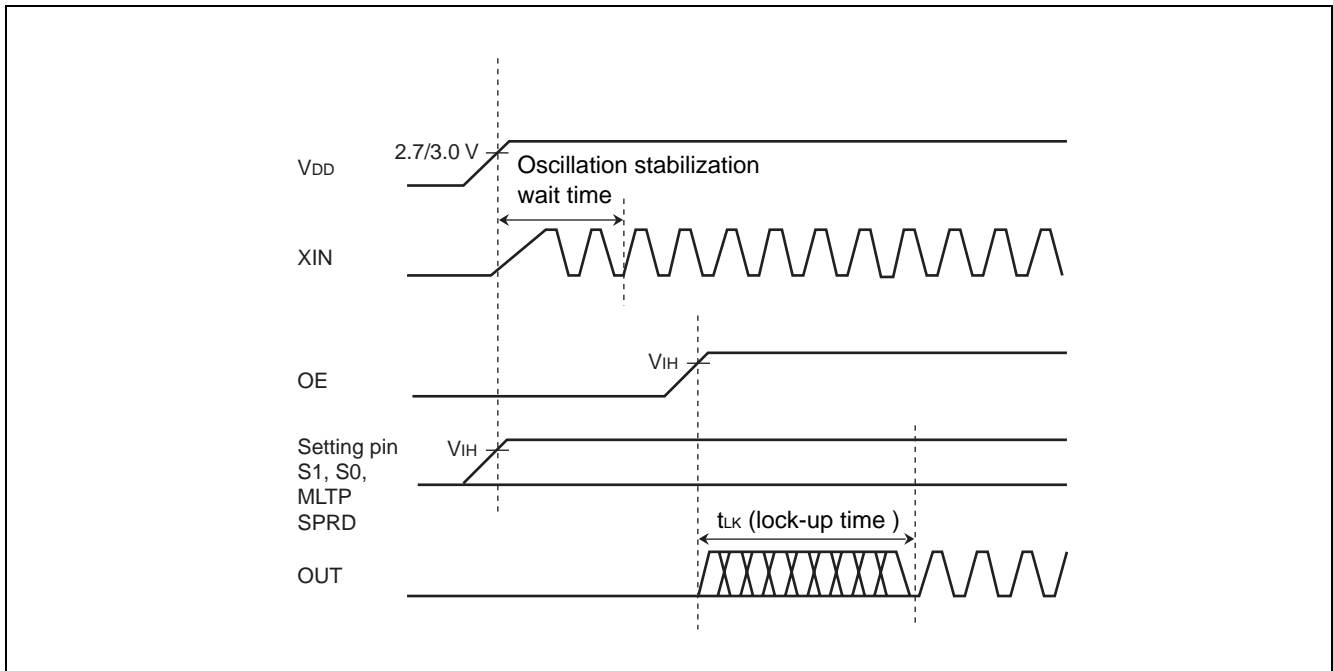
- Modulation rate  $-2.0\%$ , example of down spread



## LOCK-UP TIME

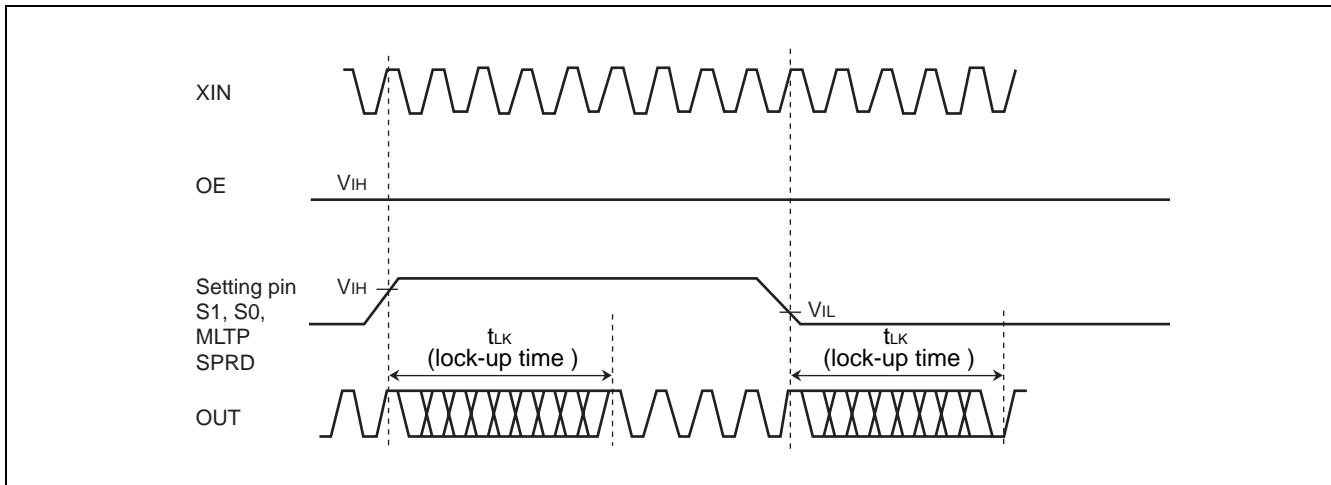


The clock oscillation stabilization wait time is required when the power is turned on. If the OE pin is fixed at "H" level, the maximum time after the power is turned on until the required clock is obtained is (the oscillation stabilization wait time of input clock to XIN pin) + (the lock-up time "t<sub>LK</sub>"). For the stabilization wait time of input clock to the XIN pin, check the characteristics of the resonator or oscillator used.



If the OE pin is used for power down control, the required clock is obtained at most the lock-up time "t<sub>LK</sub>" after the OE pin goes "H" level.



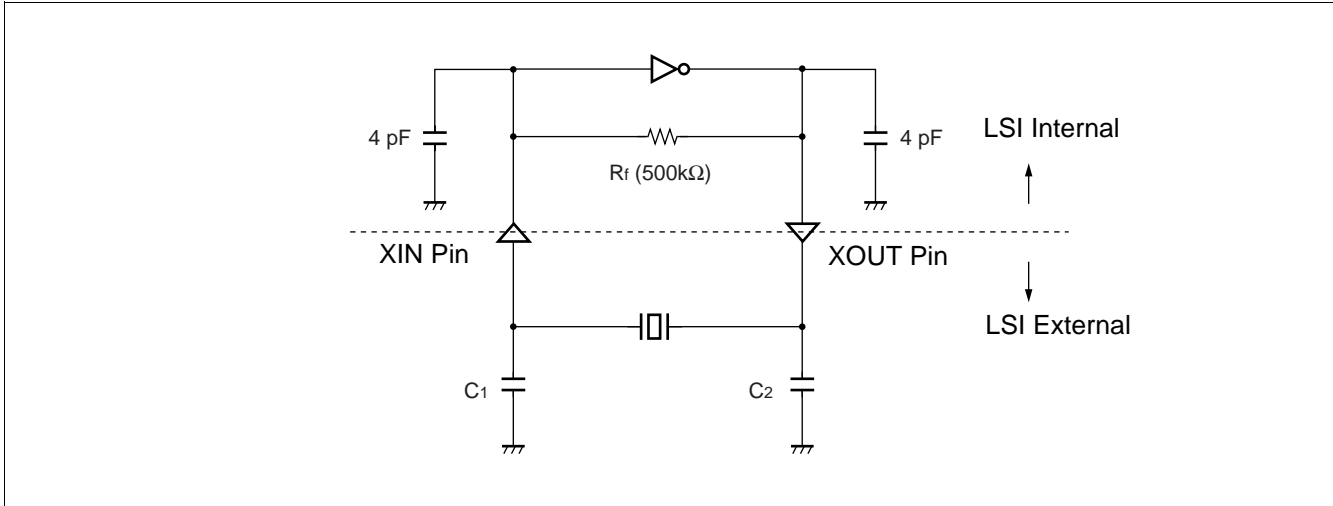


If the setting pin (S1, S0, MLTP, or SPRD) is used for control during normal operation, the required clock is obtained at most the lock-up time " $t_{LK}$ " after the level at the pin is determined.

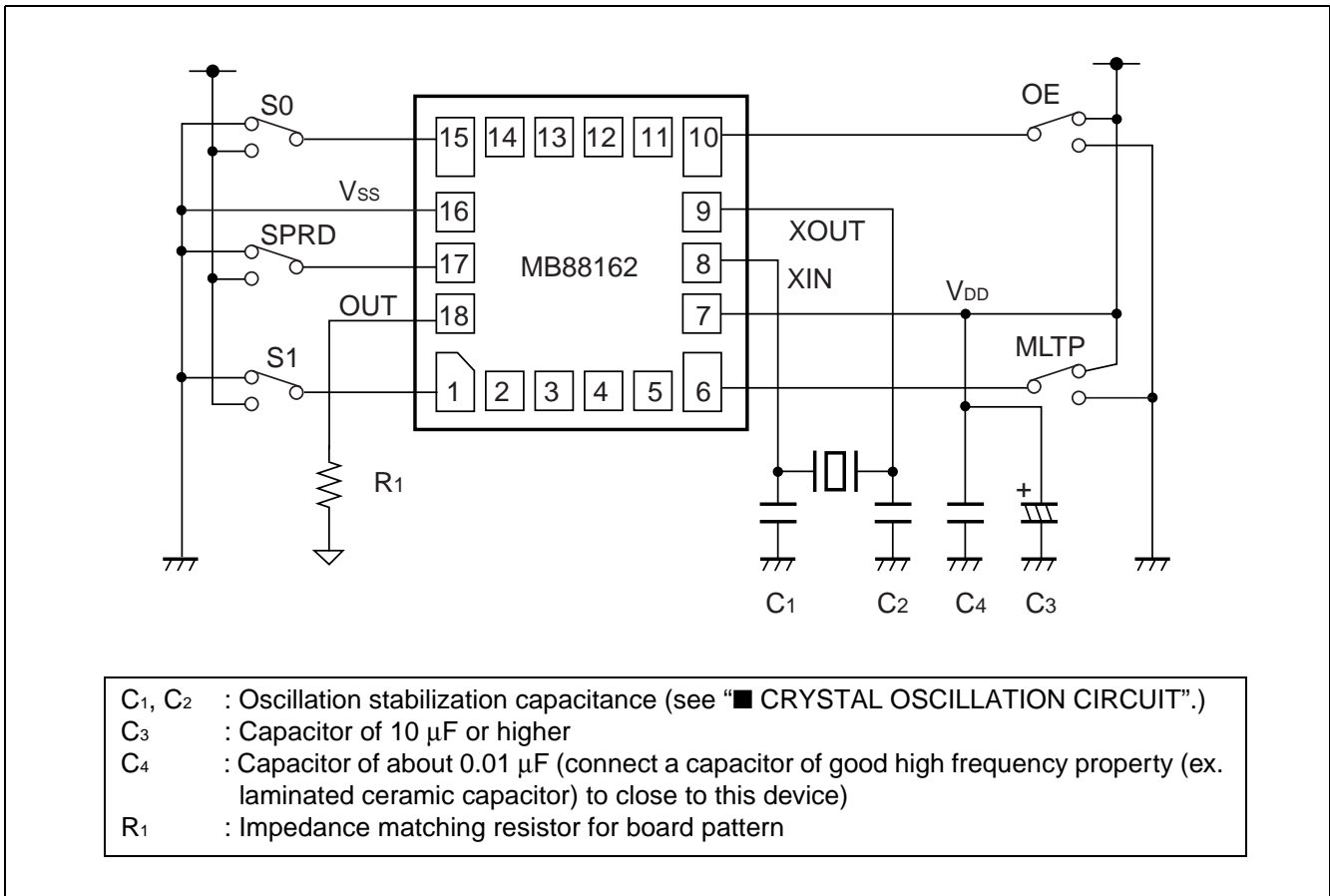
Note : The wait time for the clock signal output from the OUT pin to become stable is required after the IC is released from power-down mode by the OE pin or after another pin's setting is changed. During the period until the output clock signal becomes stable, the output frequency, output clock duty cycle, modulation period, and Cycle-Cycle jitter characteristic cannot be guaranteed. It is therefore advisable to perform processing such as cancelling a reset of the device at the succeeding stage after the lock-up time.

## ■ CRYSTAL OSCILLATION CIRCUIT

The figure below shows the connection example about general crystal resonator. The oscillation circuit has the built-in feedback resistor (500kΩ) and oscillation stabilization capacitance (4 pF). Because the value of oscillation stabilization capacitance must be adjusted to the most suitable value of the individual oscillator, add the capacitance (C1 and C2) to LSI external if necessary.



## ■ INTERCONNECTION CIRCUIT EXAMPLE



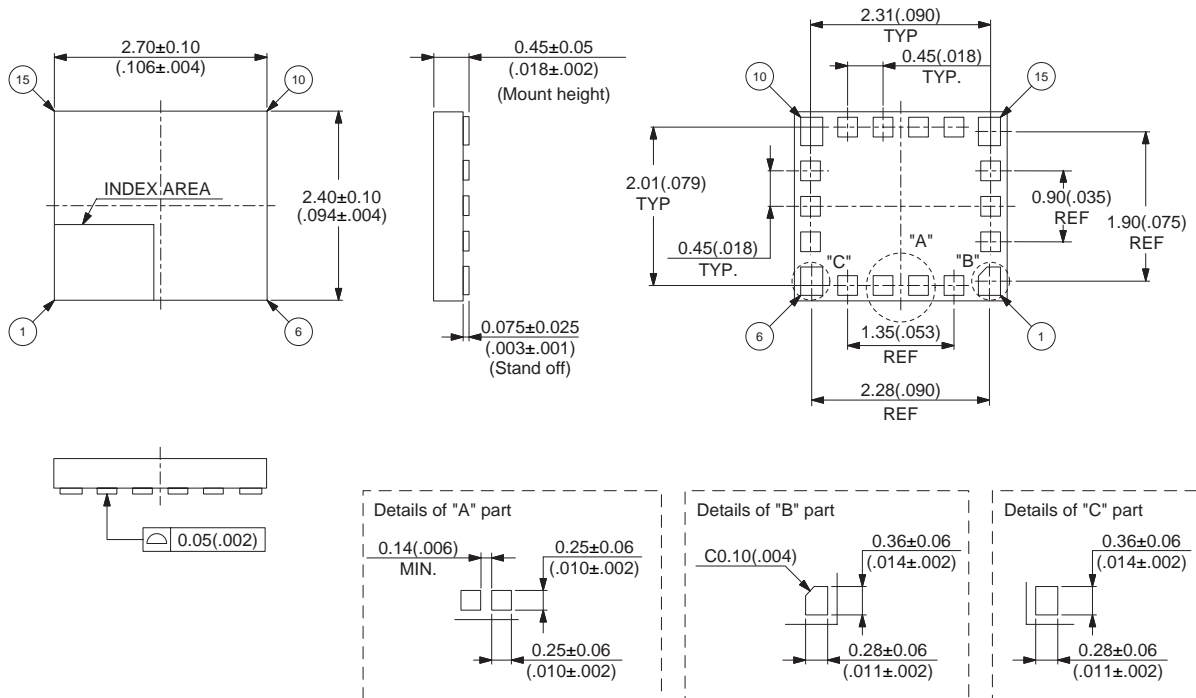
## ■ ORDERING INFORMATION

Part no.	Package	Emboss taping
MB88162PVB-G-EFE1	18-pin plastic BCC (LCC-18P-M05)	EF type
MB88162PVB-G-ERE1		ER type

# MB88162

## ■ PACKAGE DIMENSION

18-pin plastic BCC  
(LCC-18P-M05)



© 2003 FUJITSU LIMITED C18058S-c-1-1

Dimensions in mm (inches)

Note: The values in parentheses are reference values.

**MEMO**

A large rectangular area with rounded corners, intended for writing a memo. It is connected to the 'MEMO' label by a thin line.

**MEMO**

**MEMO**

# FUJITSU MICROELECTRONICS LIMITED

Shinjuku Dai-Ichi Seimei Bldg. 7-1, Nishishinjuku 2-chome, Shinjuku-ku,  
Tokyo 163-0722, Japan Tel: +81-3-5322-3347 Fax: +81-3-5322-3387  
<http://jp.fujitsu.com/fml/en/>

*For further information please contact:*

## **North and South America**

FUJITSU MICROELECTRONICS AMERICA, INC.  
1250 E. Arques Avenue, M/S 333  
Sunnyvale, CA 94085-5401, U.S.A.  
Tel: +1-408-737-5600 Fax: +1-408-737-5999  
<http://www.fma.fujitsu.com/>

## **Europe**

FUJITSU MICROELECTRONICS EUROPE GmbH  
Pittlerstrasse 47, 63225 Langen,  
Germany  
Tel: +49-6103-690-0 Fax: +49-6103-690-122  
<http://emea.fujitsu.com/microelectronics/>

## **Korea**

FUJITSU MICROELECTRONICS KOREA LTD.  
206 KOSMO TOWER, 1002 Daechi-Dong,  
Kangnam-Gu, Seoul 135-280  
Korea  
Tel: +82-2-3484-7100 Fax: +82-2-3484-7111  
<http://www.fmk.fujitsu.com/>

## **Asia Pacific**

FUJITSU MICROELECTRONICS ASIA PTE LTD.  
151 Lorong Chuan, #05-08 New Tech Park,  
Singapore 556741  
Tel: +65-6281-0770 Fax: +65-6281-0220  
<http://www.fujitsu.com/sg/services/micro/semiconductor/>

FUJITSU MICROELECTRONICS SHANGHAI CO., LTD.  
Rm.3102, Bund Center, No.222 Yan An Road(E),  
Shanghai 200002, China  
Tel: +86-21-6335-1560 Fax: +86-21-6335-1605  
<http://cn.fujitsu.com/fmc/>

FUJITSU MICROELECTRONICS PACIFIC ASIA LTD.  
10/F., World Commerce Centre, 11 Canton Road  
Tsimshatsui, Kowloon  
Hong Kong  
Tel: +852-2377-0226 Fax: +852-2376-3269  
<http://cn.fujitsu.com/fmc/tw>

All Rights Reserved.

The contents of this document are subject to change without notice.

Customers are advised to consult with sales representatives before ordering.

The information, such as descriptions of function and application circuit examples, in this document are presented solely for the purpose of reference to show examples of operations and uses of FUJITSU MICROELECTRONICS device; FUJITSU MICROELECTRONICS does not warrant proper operation of the device with respect to use based on such information. When you develop equipment incorporating the device based on such information, you must assume any responsibility arising out of such use of the information.

FUJITSU MICROELECTRONICS assumes no liability for any damages whatsoever arising out of the use of the information.

Any information in this document, including descriptions of function and schematic diagrams, shall not be construed as license of the use or exercise of any intellectual property right, such as patent right or copyright, or any other right of FUJITSU MICROELECTRONICS or any third party or does FUJITSU MICROELECTRONICS warrant non-infringement of any third-party's intellectual property right or other right by using such information. FUJITSU MICROELECTRONICS assumes no liability for any infringement of the intellectual property rights or other rights of third parties which would result from the use of information contained herein.

The products described in this document are designed, developed and manufactured as contemplated for general use, including without limitation, ordinary industrial use, general office use, personal use, and household use, but are not designed, developed and manufactured as contemplated (1) for use accompanying fatal risks or dangers that, unless extremely high safety is secured, could have a serious effect to the public, and could lead directly to death, personal injury, severe physical damage or other loss (i.e., nuclear reaction control in nuclear facility, aircraft flight control, air traffic control, mass transport control, medical life support system, missile launch control in weapon system), or (2) for use requiring extremely high reliability (i.e., submersible repeater and artificial satellite).

Please note that FUJITSU MICROELECTRONICS will not be liable against you and/or any third party for any claims or damages arising in connection with above-mentioned uses of the products.

Any semiconductor devices have an inherent chance of failure. You must protect against injury, damage or loss from such failures by incorporating safety design measures into your facility and equipment such as redundancy, fire protection, and prevention of over-current levels and other abnormal operating conditions.

Exportation/release of any products described in this document may require necessary procedures in accordance with the regulations of the Foreign Exchange and Foreign Trade Control Law of Japan and/or US export control laws.

The company names and brand names herein are the trademarks or registered trademarks of their respective owners.