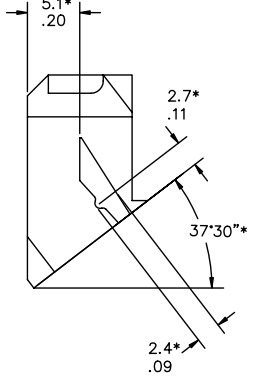
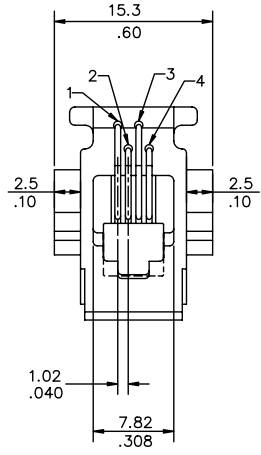
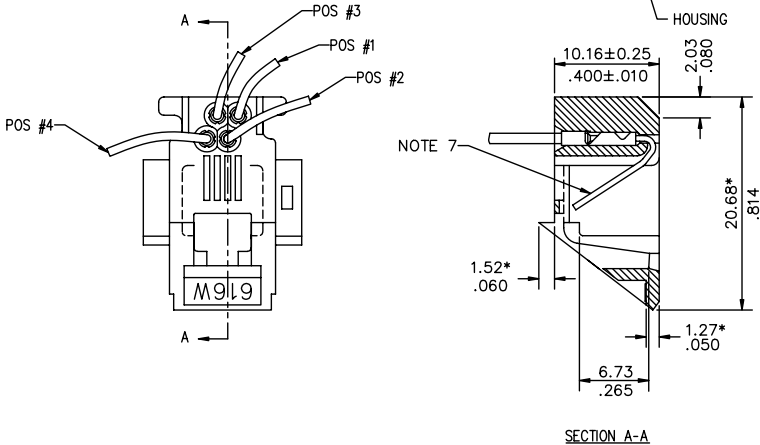
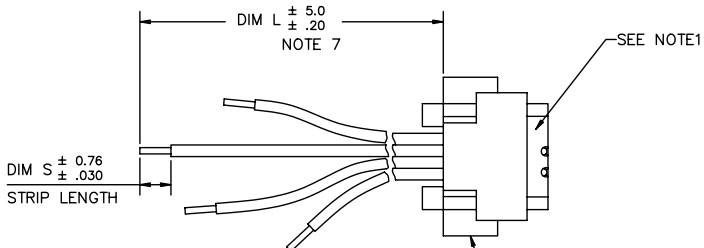


Tous droits strictement réservés. Reproduction ou communication sans l'avis écrit de la propriété de FCJ. Toute réimpression sans autorisation écrite de la propriété de FCJ.

All rights strictly reserved. Reproduction or issue to third parties in any form without the written authority from the proprietor. Property of FCJ. Copyright FCJ.



PRODUCT NO.
SEE TABLE OF SHEET 2



| mat'l code | | | | tolerance unless otherwise specified | | CUSTOMER COPY | | FCJ | | www.fcjconnect.com | |
|------------|----------|----------|----------|--------------------------------------|---------------------------|---------------|---|-----|--|--------------------|--|
| rev. | ecn no. | dr | date | linear | 0.0 ± 0.25/0.00 ± .01 | projection | | | | | |
| T | T60338 | CL | 09/10/96 | | 0.000 ± 0.15/0.000 ± .005 | 1 | | | | | |
| U | T70398 | TC | 09/22/97 | | 0.000 ± 0.05/0.000 ± .002 | 2 | title 616W MOD JACK ASSY WITH STRIPPED ENDS | | | | |
| V | T90289 | TC | 08/24/99 | angles | ± 0°30' | 3 | product family MOD JACK code | | | | |
| W | T90356 | TC | 10/14/99 | dr | | 4 | size dwg no. TWN | | | | |
| X | N05-0064 | YS | 03/04/00 | engr | T.CHIEH 09/07/93 | unit | mm/inch | | | | |
| Y | N08-0097 | SH | 09/28/08 | chr | J.TSAO 08/08/93 | scale | N/A A4 76361 sheet 1 OF 2 | | | | |
| appd | J.TSAO | 09/08/93 | | | | | | | | | |
| sheet | revision | Y | Y | | | | | | | | |
| index | sheet | 1 | 2 | | | | | | | | |

PDM: Rev:Y STATUS:Released Printed: Aug 01, 2010

Tous droits réservés. Toute réimpression ou communication de ces plans sans autorisation écrite de la propriété de FCJ est formellement interdite.



All rights strictly reserved. Reproduction or issue to third parties in any form without written authority from the proprietor. Property of FCJ. Copyright FCJ.

| PRODUCT NO. | POS. NO. | WIRE COLOR | DIM L | WIRE STYLE | HOUSING MATERIAL | STRIP LENGTH DIM S | SPLICE FINISH | GOLDED WIRE | REMARK |
|--------------------------|------------------|--------------------------------|--|------------|------------------------|--------------------|---------------|---------------|--|
| 76361-010 76361-010LF | 1 2 3 4 | RED WHITE GREEN BLACK | 78.00/3.071 190.00/7.480 190.00/7.480 78.00/3.071 | E | ABS UL94V-0 | 3.00/.118 | UNPLATED | 30 u" Au (10) | FOR 76361-010LF STRIPPED END MUST BE SOLDER DIPPED WITH PURE TIN |
| 76361-014 76361-014LF | 1 2 3 4 | RED WHITE GREEN BLACK | 45.00/1.771 180.00/7.087 180.00/7.087 45.00/1.771 | B | ABS UL94V-0 GRAY | 3.00/.118 | UNPLATED | 30 u" Au (10) | |
| 76361-015 76361-015LF | 1 2 3 4 | RED WHITE GREEN BLACK | 40.00/1.575 180.00/7.087 180.00/7.087 40.00/1.575 | B | ABS UL94V-0 GRAY | 3.00/.118 | UNPLATED | 30 u" Au (10) | |
| 76361-031 76361-031LF | 1 2 3 4 | RED WHITE GREEN BLACK | 64.00/2.520 218.00/8.590 218.00/8.590 64.00/2.520 | B | ABS UL94V-0 GRAY | 4.00/.157 | UNPLATED | 30 u" GXT | |

NOTES:

- MAT'L HOUSING: SEE TABLE.
- MAT'L GOLD WIRE: PHOSPHOR BRONZE ALLOY UNS C51000.
PLATING: 0.76um/30u" Au OVER 2.54um/100u" Ni OR SPECIFIED.
- INSULATED WIRE:
STYLE A: 27 AWG. 7 STRANDS OF TINNED COPPER WIRE, PVC INSULATION.
STYLE B: 27 AWG. 7 STRANDS OF TINNED COPPER WIRE, TOP COATED WITH TIN PVC INSULATION.
STYLE C: 26 AWG. 7 STRANDS OF TINNED COPPER WIRE, TOP COATED WITH TIN PVC INSULATION.
- STYLE D: 26 AWG. 7 STRANDS OF TINNED COPPER WIRE, PVC INSULATION.
- STYLE E: FLEXIBLE WIRE. 0.08mm DIA. X 19 CONDUCTOR BARE COPPER WIRE. UNPLATED IN SOLD STRAND. PVC INSULATION.
- FOR FUNCTIONAL MECHANICAL AND VISUAL REQUIREMENTS. SEE PRODUCT SPECIFICATION BUS-12-003
- TERMINAL MAT'L: BRASS ALLOY, PLAIN.
- ALL DIM MARKED WITH ASTERISKS ARE REF. FOR MOUNTING.
- WHEN A 4-POSITION PLUG IS INSERTED INTO THE HSG. THE CONTACT WIRE MAY NOT PROTRUDE OUT OF THE REAR WALL OF HSG.
- IF LF P/N THE PRODUCT MEETS EUROPEAN UNION DIRECTIVES AND OTHER COUNTRY REGULATIONS AS DESCRIBED IN GS-22-008.
- IF LF P/N THE PACKAGING MEETS GS-14-920 SPECIFICATION.
- (10) EQUIVALENT THICKNESS Au AND GXT PLATING HAVE SAME FUNCTION AND THEY ARE ALTERNATIVE BY THE CUSTOEMR .

| | | | | | | | |
|------------|----------|--------------------------------------|-----------------|----------|---|---------------------------|---------------------------------------|
| mat'l code | | tolerance unless otherwise specified | | CUSTOMER | | FCJ www.fcjconnect.com | |
| rev. | ecn no. | dr | date | linear | 0.0 ±0.25/00 ±.01 0.00 ±0.13/000 ±.005 0.000 ±0.05/0000 ±.002 | projection | title |
| Y | | | | angles | ± 0°30" | ⊕ | 616W MOD JACK ASSY WITH STRIPPED ENDS |
| | | dr | T.CHEN 09/07/93 | unit | mm/inch | product family | MOD JACK |
| | | enqr | T.CHEN 09/07/93 | size | A4 | dwg no. | code |
| | | chr | J.TSAO 09/08/93 | scale | | 76361 | TWN |
| | | pppd | J.TSAO 09/08/93 | | | | sheet |
| sheet | revision | | | | | | 2 of 2 |
| index | sheet | | | | | | |